



NEW AquaPruf Motorized Pulley

General Specifications:

- Motorized Pulley Widths: 12" to 46" in 2" increments
- All external components are stainless steel
- Pulley located in conveyor frame with welded supports
- Pulley supports have quick locating and removal slot
- All frame components are a #4 finish
- Completely sealed components ideal for sanitary applications
- 50,000 hours of operation between oil changes
- 96% mechanically efficient
- Saves up to 30% power consumption over conventional motors
- Available on all 7400, 7600, & Ultimate Series
- 230 or 460 Volt 3 Phase
- VFD variable speed capable
- Speeds to 270 feet per minute

Features & Benefits

- 304 stainless steel for durability in tough applications
- Sealed drum motor is ideal for heavy duty washdown applications
- Pulley locating supports allow for fast removal and relocating for sanitation
- No fasteners are used to locate sprockets on motorized pulley
- Innovative sprocket locating key way allows for fast and effective sanitation

Progressive Key Sprocket Retention System*

- Locates low profile sprockets in place without the use of set-screws or fasteners
- Eliminates the possibility of fasteners loosening up and falling into the food zone
- The primary key is easily removed by shifting the main retaining ring then each progressive sprocket and key can be removed for fast effective sanitation
- When re-installed the sprockets are automatically located for proper mating with the conveyor chain
- Retention System works for both plastic chain and positive driven urethane belting

*Patent Pending



www.dorner.com
info@dorner.com

DORNER MFG. CORP.
PO Box 20 • 975 Cottonwood Ave.
Hartland, WI 53029 USA

INSIDE THE USA
TEL: 800.397.8664
FAX: 800.369.2440

OUTSIDE THE USA
TEL: 262.367.7600
FAX: 262.367.5827

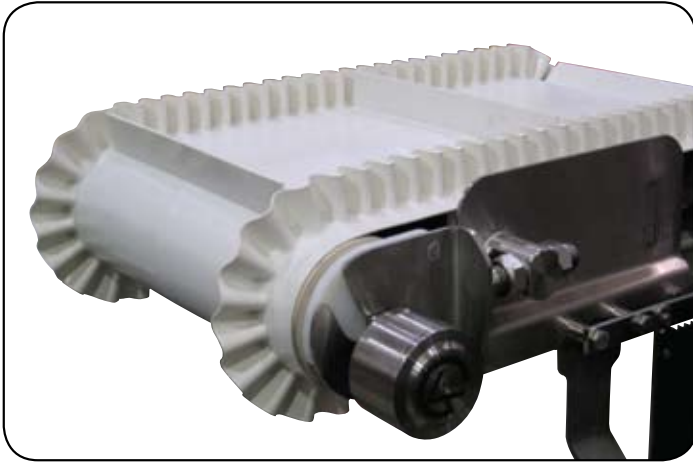
NEW

AquaPruf Motorized Pulley

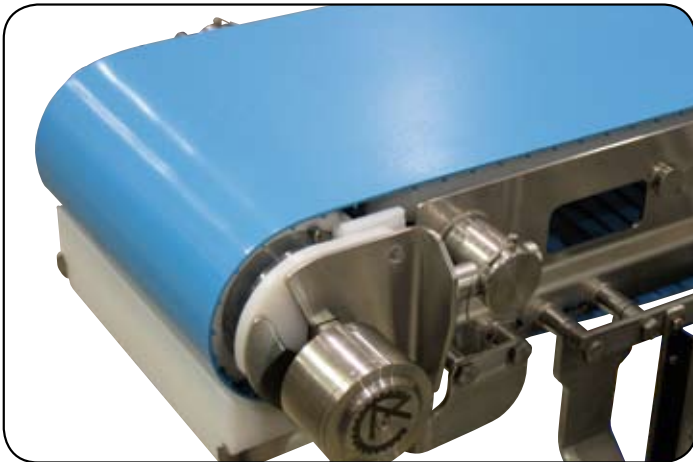
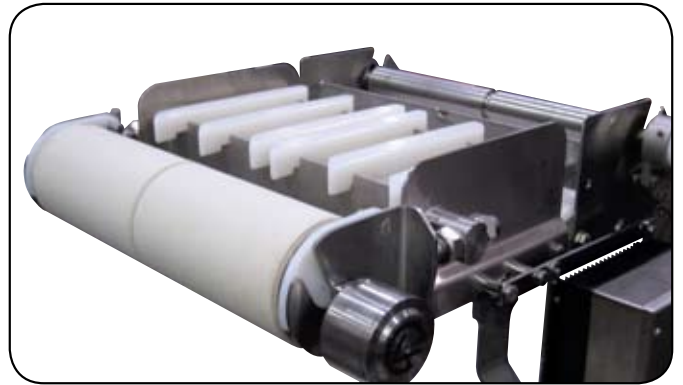
AquaPruf[®]



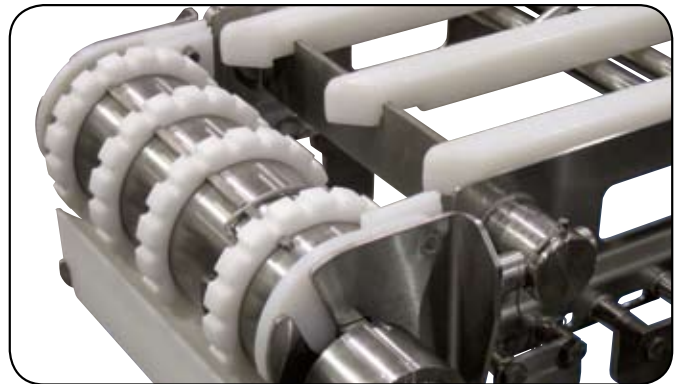
7400/7400 ULTIMATE* - Stainless Steel Sprocket



7600 - Molded Urethane Lagging



7600 ULTIMATE* - Plastic Sprocket



*Progressive Key Sprocket Retention System

DORNER[®]

www.dorner.com
info@dorner.com

DORNER MFG. CORP.
PO Box 20 • 975 Cottonwood Ave.
Hartland, WI 53029 USA

INSIDE THE USA
TEL: 800.397.8664
FAX: 800.369.2440

OUTSIDE THE USA
TEL: 262.367.7600
FAX: 262.367.5827