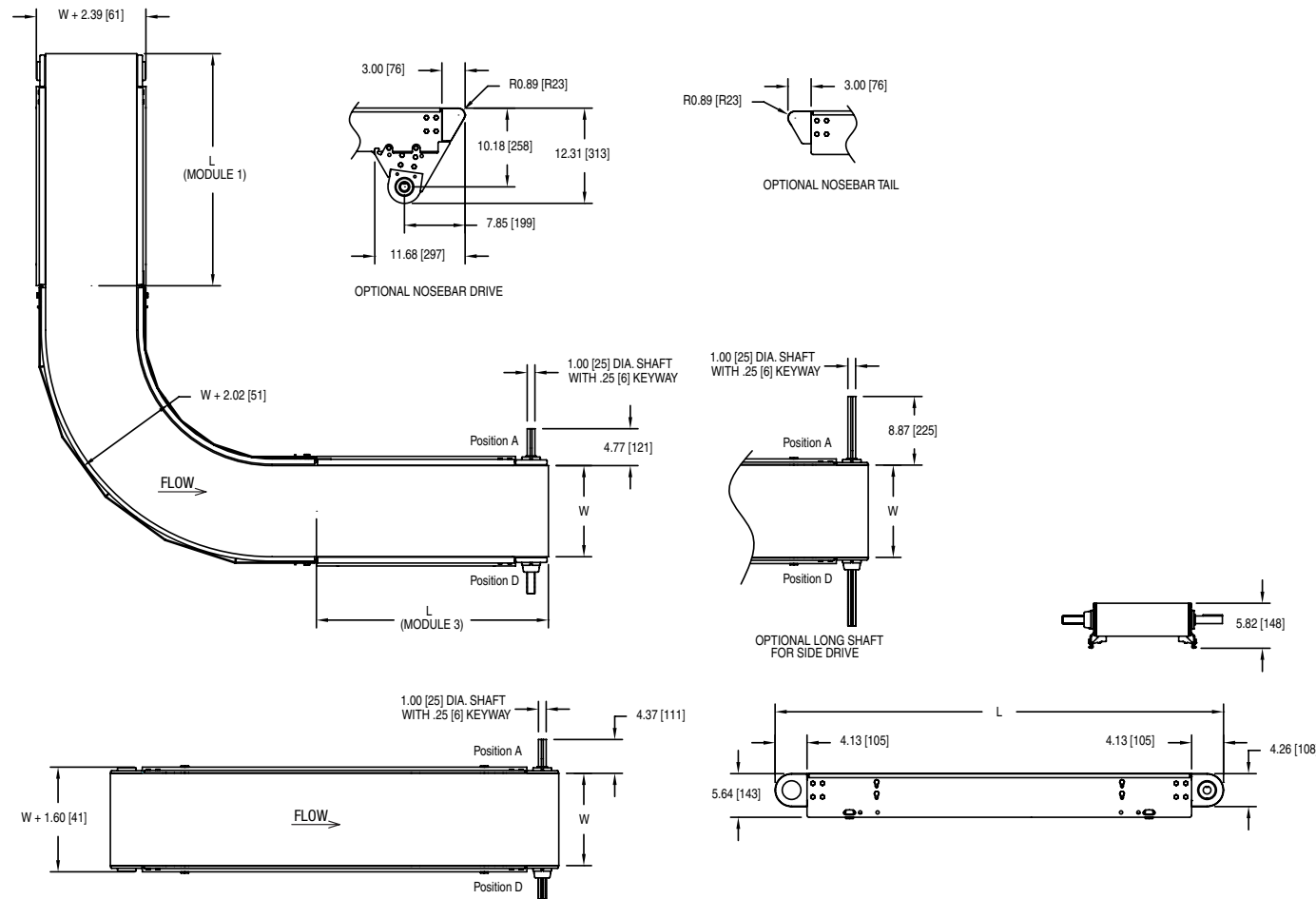
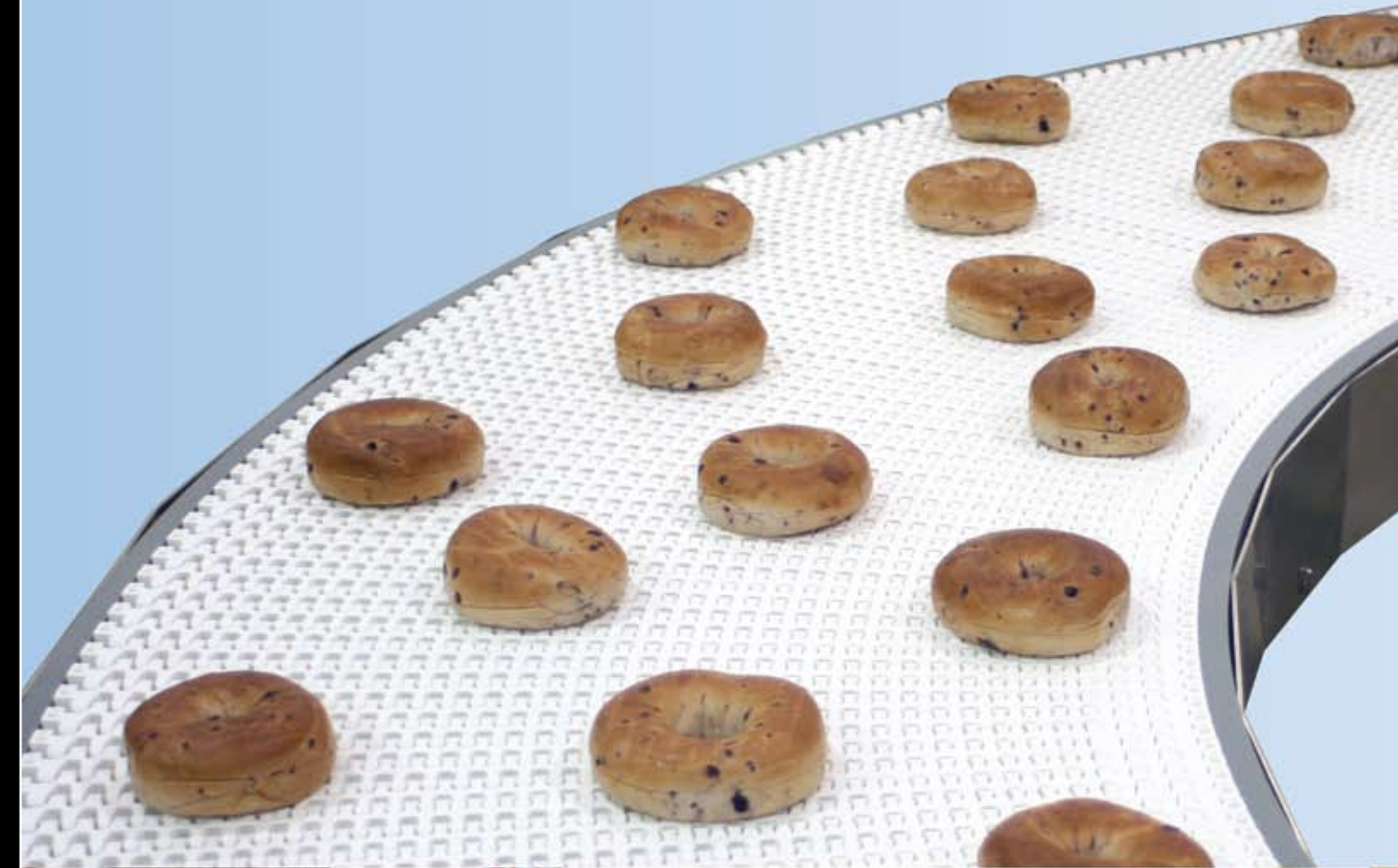


AquaGard™

Maximum Flexibility

Increase Throughput

Reduce Product Loss



AquaGard™ 7350 Series General Specifications:

- All Welded Stainless Steel Frame
- Straight Flat and Cleated Modular Plastic Belt
- Curved Flat Plastic Modular Belt
Curves 45°, 90°, 135° & 180°
- Conveyor Widths:
Flat Belt and Curve Belt:
4" to 36" (102mm to 914mm) in 2" increments
- Conveyor Lengths:
36" to 83' (914mm to 25.4m) in 1" increments
- Loads up to 20 lbs/per square foot of belt (90kg/m²)
- Speeds up to 260 ft/min (78.6meters/min)

Standard Pre-Engineered Options:

- Nosebar Drive and Idler Pulley with 1" (25.4mm) diameter for small part transfer. Speeds up to 260 ft/min.
- Powered Transfer for small parts and maintaining speeds through transfer. Speeds up to 260 ft/min.
- Roller transfer plate for smooth product transitions in minimal added length.
- Ease of Automation with no drilling required. Packages for adjustable guiding, photo eyes, low voltage wires, air tubing.
- Accessory Bar for locating multiple accessories in one area of the entire length of the conveyor.
- Mounting holes are available on one or both sides of the conveyor.

Maximum Flexibility

- Straights & Curve Modules
- 3 Product Transfers to Choose From
- No Drilling Required for Ease of Automation or Guiding
 - Attach controls, photo eyes, low voltage wire, & air tubing
 - Attach accessory bar for mounting several automation components
 - Attach any of standard guide packages to tailor fit conveyor

Increase Throughput

- Speeds up to 260 feet per minute
- Available in Straights and Curves
- 1" Nose Bar Tails
- Powered Transfer

Reduce Product Loss

- 1" Nose Bar Tails for small part transfer
- Powered Transfer for maintaining speeds through transfer
- Roller transfer plate for smooth product transfer in minimal added length

Standard Product

- Standard product that is pre-engineered
- Quotes in Minutes
- Standard product ships fast

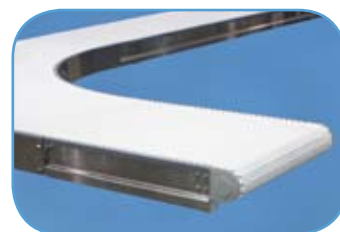
AquaGard™ 7350 Series Conveyors

Improve your bottom line results with industry leading speeds, best in class product transfers, and ease of automation.

Dorner's AquaGard is ready for your next product Move!



TIG Welded Stainless Steel
Solid UHMW Bed
Open Frame Design



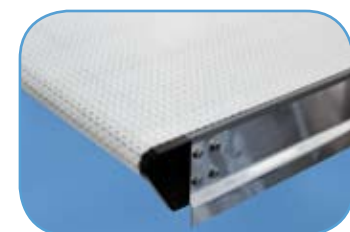
Curves
45°, 90°, 135° & 180°



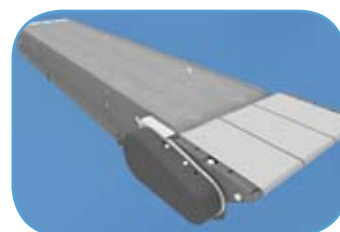
1 Inch Nose Bar Drive



Patented Sprocket
Alignment Key



1 Inch Nose Bar Tail



Powered Transfer



Roller Transfer Plate



Formed Angle
TIG Welded Stand

Tailor Fit Accessories for Your Needs

Ease of Automation & Guiding



No Drilling, with
Innovative Key Hole &
Mounting Rod



Low Voltage Wiring
Accessories



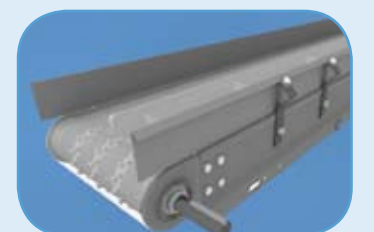
Accessory Bar for
Multiple Mounting



Fully Adjustable
Single Rail



Fully Adjustable Twin Rail



High Side Guide