

GEARMOTOR MOUNTING PACKAGE & GEARMOTOR SELECTION STEPS

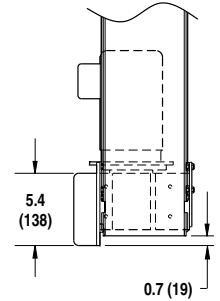
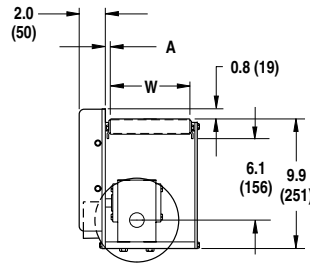
- Step 1:** Select a **Gearmotor Mounting Package**. For End drive conveyors, select a side, bottom, top, flush (pages 20-22). Be sure to note if it is for a **90°** or **Parallel Shaft Gearmotor**.
- Step 2:** Using **Belt Speed and Load** Requirements, determine the required **Gearmotor Type** (Standard or Heavy) for your application using the chart below.
- Step 3:** Go to the set of Belt Speed Charts on page 23 and choose between the **Fixed** or **Variable Speed** chart.
- Step 4:** Go down the first column of the Belt Speed Chart and locate the required **Belt Speed** for your application. If the desired belt speed is not listed, round up to the next higher speed.
(Dorner offers much more than just the belt speeds listed in the tables, contact the factory for complete details)
- Step 5:** From the row containing your required **Belt Speed**, check to be sure that speed is available for the **Mount Package** you chose. (End Drive Only - Top or Bottom)
- Step 6:** Use the Drive / Driven Pulley Kit combination to complete your Mounting Package Part Number.
- Step 7:** Note the **RPM from Gearmotor**, it will be needed to select the correct Gearmotor from the Gearmotor Chart.
- Step 8:** Reference the **Gearmotor Chart #** to locate a compatible Gearmotor Chart on pages 24-27. Be sure to select a Gearmotor Chart to match your **Gearmotor Type** (Standard or Heavy) and your **Mounting Package** while meeting your electrical requirements.
(Red = Parallel Shaft or Blue = 90°)
- Step 9:** Using the **RPM from Gearmotor** (Step 6), locate the **Part Number** for your Gearmotor from the Gearmotor Table.

GEARMOTOR TYPE		Conveyor Load - lbs. (kg)																				
		Conveyor Load - lbs. (kg)																				
		10 (4.5)	20 (9.1)	30 (13.6)	40 (18.2)	50 (22.7)	60 (27.3)	70 (31.8)	80 (36.4)	90 (40.9)	100 (45.5)	110 (50)	120 (54.5)									
Belt Speed - Ft/min (m/min)	0-15 (0-4.6)																					
	16-30 (4.9-9.1)																					
	31-45 (9.5-13.7)																					
	46-60 (14-18.3)																					
	61-75 (18.6-22.9)																					
	76-90 (23.2-27.4)																					
	91-110 (27.7-33.5)																					
	111-130 (33.8-39.6)																					
	131-150 (39.9-45.7)																					
	151-175 (46-53.4)																					
	176-200 (53.7-61)																					
	201-225 (61.3-68.6)																					
	226-250 (68.9-76.2)																					
251-275 (76.5-83.8)																						

Bottom Mount Package, 90° Gearmotor

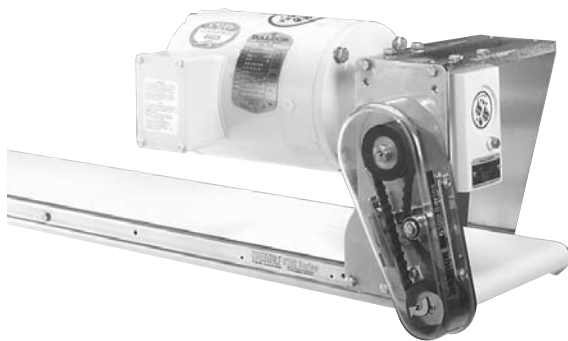


- Includes stainless steel gearmotor mounting bracket, timing belt, pulleys, belt guard and mounting hardware

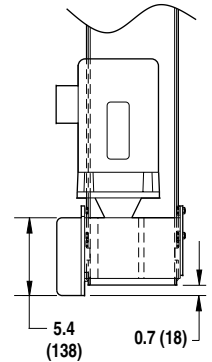
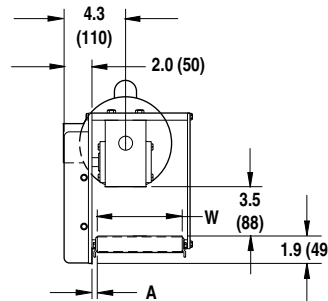


A: = 0.6 (15) for 7200
 = 1.9 (48) for 7300
 W = Conveyor Belt Width

Top Mount Package, 90° Gearmotor



- Includes stainless steel gearmotor mounting bracket, timing belt, pulleys, belt guard and mounting hardware



A: = 0.6 (15) for 7200
 = 1.9 (48) for 7300
 W = Conveyor Belt Width

Heavy Duty Sprocket Kit



Heavy Duty Sprocket Kit Used in Wet Applications

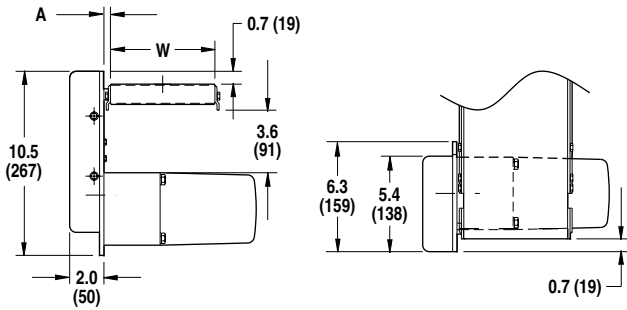
- Compatible with Standard and Heavy Load Top and Bottom Mount packages
- Stainless Steel #40 Sprockets
- Stainless Steel/Acetal #40 Chain
- Belt speeds up to 145 ft/min

This kit becomes part of the gearmotor mounting package when you select your belt speed from the "Heavy Duty Sprocket Kit" speed chart (*see page 23*).

Note: Conveyor and gearmotor are not included in the mounting package and must be ordered separately. Dimensions = in (mm)

AquaGard™ 7200 & 7300 SERIES: GEARMOTOR MOUNTING PACKAGES

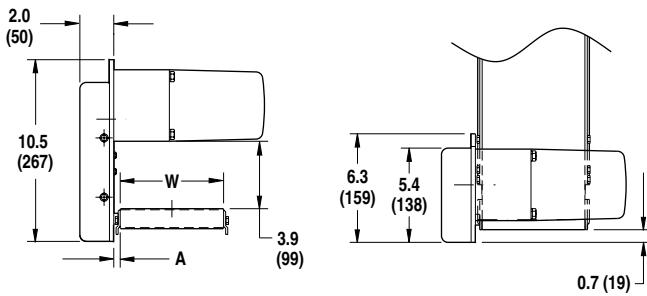
Bottom Mount Package, Parallel Shaft Gearmotor



A: = 0.6 (15) for 7200
 = 1.9 (48) for 7300
 W = Conveyor Belt Width

- Includes stainless steel gearmotor mounting bracket, timing belt, pulleys, belt guard and mounting hardware

Top Mount Package, Parallel Shaft Gearmotor



A: = 0.6 (15) for 7200
 = 1.9 (48) for 7300
 W = Conveyor Belt Width

- Includes stainless steel gearmotor mounting bracket, timing belt, pulleys, belt guard and mounting hardware

Note: Conveyor and gearmotor are not included in the mounting package and must be ordered separately. Dimensions = in (mm)

Standard Timing Belt Kit

Fixed Speed						
Belt Speed		RPM from Gearmotor	Pulley Kit		Gearmotor Chart	
ft/min	m/min		Drive Pulley	Driven Pulley	Standard Load	Heavy Load
7	2.1	35	19	32		5, 6
12	3.7	50	22	32	1	
17	5.2	35	44	32		5, 6
26	7.9	50	32	22	1	
35	10.7	115	28	32		5, 6
38	11.6	50	48	22	1	
56	17.1	115	44	32		5, 6
58	17.7	167	44	32	1	
58	17.7	167	32	32	1	
81	24.7	115	44	22		5, 6
100	30.5	167	48	28	1	
106	32.3	345	28	32		5, 6
148	45.1	167	48	19	1	
167	50.9	345	44	32		5, 6
190	57.9	345	44	28		5, 6
264	80.5	345	48	22		5, 6

CE RPM from 50 Hz gearmotors						
ft/min	m/min	RPM from Gearmotor	Drive Pulley	Driven Pulley	Standard Load	Heavy Load
6	1.8	29	19	32		7
10	3.0	42	22	32	2	
15	4.6	29	48	32		7
20	6.1	42	44	32	2	
30	9.1	97	28	32		7
32	9.8	42	48	22	2	
49	14.9	139	32	32	2	
51	15.5	97	48	32		7
73	22.3	139	48	32	2	
74	22.6	97	48	22		7
98	29.9	139	44	22	2	
102	31.1	290	32	32		7
123	37.5	139	48	19	2	
153	46.6	290	48	32		7
204	62.2	290	44	22		7
257	78.3	290	48	19		7

Variable Speed						
Belt Speed		RPM from Gearmotor	Pulley Kit		Gearmotor Chart	
ft/min	m/min		Drive Pulley	Driven Pulley	Standard Load	Heavy Load
1.2 - 7	0.4 - 2.1	35	19	32		8, 9, 10
2.0 - 12	0.6 - 3.7	50	22	32	3	
2.8 - 17	0.9 - 5.2	35	44	32		8, 9, 10
4.3 - 26	1.3 - 7.9	50	32	22	3	
5.8 - 35	1.8 - 10.7	115	28	32		8, 9, 10
6.3 - 38	1.9 - 11.6	50	48	22	3	
9.3 - 56	2.8 - 17.1	115	44	32		8, 9, 10
9.7 - 58	2.9 - 17.7	167	32	32	3	
13.3 - 80	4.1 - 24.4	167	44	32	3	
13.5 - 81	4.1 - 24.7	115	44	22		8, 9, 10
16.7 - 100	5.1 - 30.5	167	48	28	3	
17.7 - 106	5.4 - 32.3	345	28	32		8, 9, 10
24.7 - 148	7.5 - 45.1	167	48	19	3	
27.8 - 167	8.5 - 50.9	345	44	32		8, 9, 10
31.7 - 190	9.7 - 57.9	345	44	28		8, 9, 10
44.0 - 264	13.4 - 80.5	345	48	22		8, 9, 10

CE RPM from 50 Hz gearmotors, VFD drive at 63 max. Hz output						
ft/min	m/min	RPM from Gearmotor	Drive Pulley	Driven Pulley	Standard Load	Heavy Load
2.0 - 12	0.6 - 3.7	42	22	32	4	
4.0 - 24	1.2 - 7.3	42	44	32	4	
6.3 - 38	1.9 - 11.6	42	48	22	4	
9.7 - 58	2.9 - 17.7	139	32	32	4	
14.7 - 88	4.5 - 26.8	139	48	32	4	
19.5 - 117	5.9 - 35.7	139	44	22	4	
24.7 - 148	7.5 - 45.1	139	48	19	4	

Refer to the Gearmotor Selection Steps on page 20 for instructions on using the Belt Speed Charts.

Note: Red = Parallel Shaft, Blue = 90°

Heavy Duty Sprocket Kit

Fixed Speed						
Belt Speed		RPM from Gearmotor	Pulley Kit		Gearmotor Chart	
ft/min	m/min		Drive Pulley	Driven Pulley	Standard Load	Heavy Load
14	4.3	35	12	10		5, 6
21	6.4	50	12	10	1	
24	7.3	35	20	10		5, 6
32	9.8	50	18	10	1	
49	14.9	115	12	10		5, 6
70	21.3	167	12	10	1	
73	22.3	115	18	10		5, 6
94	28.7	167	16	10	1	
117	35.7	167	20	10	1	
145	44.2	345	12	10		5, 6

CE RPM from 50 Hz gearmotors						
ft/min	m/min	RPM from Gearmotor	Drive Pulley	Driven Pulley	Standard Load	Heavy Load
12	3.7	29	12	10		7
18	5.5	42	12	10	2	
20	6.1	29	20	10		7
29	8.8	42	20	10	2	
41	12.5	97	12	10		7
59	18.0	139	12	10	2	
68	20.7	97	20	10		7
88	26.8	139	18	10	2	
98	29.9	139	20	10	2	
122	37.2	290	12	10		7

Variable Speed						
Belt Speed		RPM from Gearmotor	Pulley Kit		Gearmotor Chart	
ft/min	m/min		Drive Pulley	Driven Pulley	Standard Load	Heavy Load
2.3 - 14	0.7 - 4.3	35	12	10		8, 9, 10
3.5 - 21	1.1 - 6.4	50	12	10	3	
4.0 - 24	1.2 - 7.3	35	20	10		8, 9, 10
5.3 - 32	1.6 - 9.8	50	18	10	3	
8.2 - 49	2.5 - 14.9	115	12	10		8, 9, 10
11.7 - 70	3.6 - 21.3	167	12	10	3	
12.2 - 73	3.7 - 22.3	115	18	10		8, 9, 10
15.7 - 94	4.8 - 28.7	167	16	10	3	
19.5 - 117	5.9 - 35.7	167	20	10	3	
24.2 - 145	7.4 - 44.2	345	12	10		8, 9, 10

CE RPM from 50 Hz gearmotors, VFD drive at 63 max. Hz output						
ft/min	m/min	RPM from Gearmotor	Drive Pulley	Driven Pulley	Standard Load	Heavy Load
3.5 - 21	1.1 - 6.4	42	12	10	4	
5.8 - 35	1.8 - 10.7	42	20	10	4	
11.7 - 70	3.6 - 21.3	139	12	10	4	
17.5 - 105	5.3 - 32.0	139	18	10	4	
19.5 - 117	5.9 - 35.7	139	20	10	4	