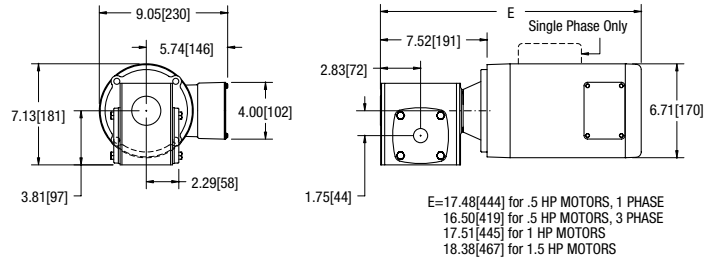


STANDARD LOAD, FIXED SPEED

Chart 1 Painted Gearmotor

- Nema 56C
- IP 55 Protection Rating
- Sealed Reducer with FDA H1 Lubricant
- FDA Approved Stainless Painted Gear Box
- FDA Approved White Epoxy Painted Motor
- UL and CSA Approved
- Totally Enclosed Non-Ventilated
- Order optional Manual Motor Starter separately, see page 207
- 0.5 Hp 230 / 460 Volts, 3 Phase
- 1.0 & 1.5 HP 208-230 / 460 Volts, 3 Phase

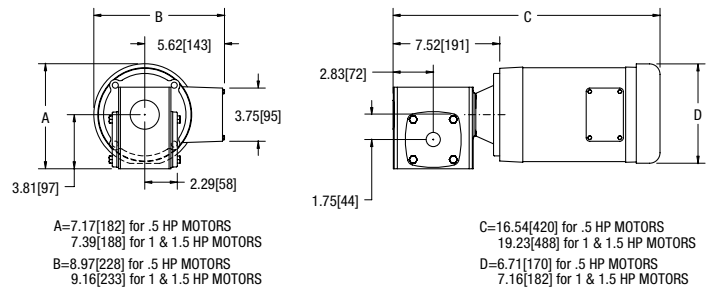


Part Number	Belt Speed		RPM	1 Phase			3 Phase			in.-lbs.	Nm
	Ft/min	m/min		Hp	kW	FLA	Hp	kW	FLA		
74M080HS4(vp)FN	22	6.7	22	0.5	0.37	6.8 / 3.7-3.4	0.5	0.37	1.6 / 0.8	356	40.2
74M060HS4(vp)FN	29	8.8	29	0.5	0.37	6.8 / 3.7-3.4	0.5	0.37	1.6 / 0.8	442	49.9
74M040HS4(vp)FN	44	13.4	44	0.5	0.37	6.8 / 3.7-3.4	0.5	0.37	1.6 / 0.8	486	54.9
74M030HS4(vp)FN	58	17.7	58	n/a	n/a	n/a	1.0	0.74	3.5-3.2 / 1.6	487	55.0
74M020HS4(vp)FN	87	26.5	87	n/a	n/a	n/a	1.0	0.74	3.5-3.2 / 1.6	407	46.0
74M015HS4(vp)FN	117	35.7	117	n/a	n/a	n/a	1.0	0.74	3.5-3.2 / 1.6	470	53.1
74M010HS4(vp)FN	175	53.3	175	n/a	n/a	n/a	1.5	1.11	4.6-4.2 / 2.1	442	49.9
74M007HS4(vp)FN	233	71.0	233	n/a	n/a	n/a	1.5	1.11	4.6-4.2 / 2.1	360	40.7

(vp) = voltage and Phase 11 = 115 / 208-230, 1 Phase 23 = 0.5 HP: 230 / 460 Volts, 3 Phase; 1.0 & 1.5 HP: 208-230 / 460 Volts, 3 Phase

Chart 2 Stainless Steel Gearmotor

- Nema 56C
- IP 55 Protection Rating
- Sealed Reducer with FDA H1 Lubricant
- Stainless Steel Gear Box
- Stainless Steel Motor
- UL and CSA Approved
- 1/2 HP is Totally Enclosed Non-Ventilated
- 1 and 1 1/2 HP are Totally Enclosed Fan Cooled
- 208-230 / 460 Volts, 3 Phase
- Order optional Manual Motor Starter separately, see page 207
- 0.5 Hp 230 / 460 Volts, 3 Phase
- 1.0 & 1.5 HP 208-230 / 460 Volts, 3 Phase



Part Number	Belt Speed		RPM	3 Phase				in.-lbs	Nm
	Ft/min	m/min		Hp	kW	Volts	FLA		
74M080HHS423FN	22	6.7	22	0.5	0.37	230 / 460	1.6 / 0.8	356	40.2
74M060HHS423FN	29	8.8	29	0.5	0.37	230 / 460	1.6 / 0.8	442	49.9
74M040HHS423FN	44	13.4	44	0.5	0.37	230 / 460	1.6 / 0.8	486	54.9
74M030HHS423FN	58	17.7	58	1.0	0.74	208-230 / 460	3.2-3.0 / 1.5	487	55.0
74M020HHS423FN	87	26.5	87	1.0	0.74	208-230 / 460	3.2-3.0 / 1.5	407	46.0
74M015HHS423FN	117	35.7	117	1.0	0.74	208-230 / 460	3.2-3.0 / 1.5	470	53.1
74M010HHS423FN	175	53.3	175	1.5	1.11	208-230 / 460	5.8-5.4 / 2.7	442	49.9
74M007HHS423FN	233	71.0	233	1.5	1.11	208-230 / 460	5.8-5.4 / 2.7	360	40.7

FLA = Full Load Amperes

Some motors and gear reducers may normally operate hot to the touch. Consult factory for specific operating temperatures. Note: Dimensions = in (mm)

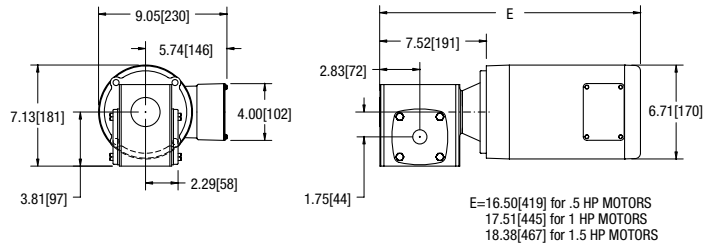
HIGHLIGHT

Highlighted gearmotors are not available with Nose Bar Drive and Nose Bar Idler tail. Maximum Nose Bar speed is 117 ft/min (35.7 m/min)

STANDARD LOAD, VARIABLE SPEED

Chart 3 Painted Gearmotor

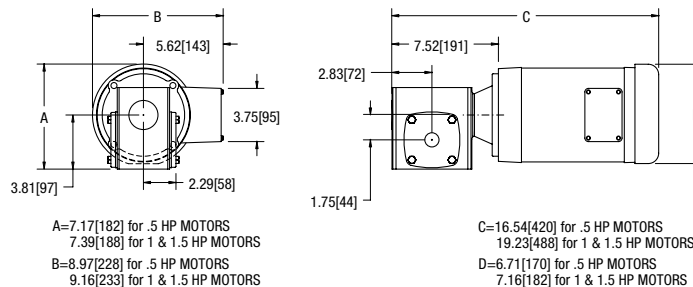
- Variable Frequency Drive, 6 to 60 Hz
- 3 Phase
- Nema 56C
- IP 55 Protection Rating
- Sealed Reducer with FDA H1 Lubricant
- FDA Approved Stainless Painted Gear Box
- FDA Approved White Epoxy Painted Motor
- UL and CSA Approved
- Totally Enclosed Non-Ventilated
- Order Control Separately, see page 207



Part Number	Belt Speed		RPM	3 Phase				in-lbs	Nm
	Ft/min	m/min		Hp	kW	Volts	FLA		
74M080HS423EN	2 to 22	0.6 to 6.7	22	0.5	0.37	230 / 460	1.6 / 0.8	356	40.2
74M060HS423EN	3 to 29	0.9 to 8.8	29	0.5	0.37	230 / 460	1.6 / 0.8	442	49.9
74M040HS423EN	5 to 44	1.3 to 13.4	44	0.5	0.37	230 / 460	1.6 / 0.8	486	54.9
74M030HS423EN	6 to 58	2.0 to 17.7	58	1.0	0.74	208-230 / 460	3.5-3.2 / 1.6	487	55.0
74M020HS423EN	9 to 87	2.6 to 26.5	87	1.0	0.74	208-230 / 460	3.5-3.2 / 1.6	487	55.0
74M015HS423EN	12 to 117	3.6 to 35.7	117	1.0	0.74	208-230 / 460	3.5-3.2 / 1.6	470	53.1
74M010HS423EN	18 to 175	5.3 to 53.3	175	1.5	1.11	208-230 / 460	4.6-4.2 / 2.1	442	49.9
74M007HS423EN	23 to 233	7.1 to 71.0	233	1.5	1.11	208-230 / 460	4.6-4.2 / 2.1	360	40.7

Chart 4 Stainless Steel Gearmotor

- Variable Frequency Drive, 6 to 60 Hz
- 3 Phase
- Nema 56C
- IP 55 Protection Rating
- Sealed Reducer with FDA H1 Lubricant
- Stainless Steel Gear Box
- Stainless Steel Motor
- UL and CSA Approved
- 1/2 HP is Totally Enclosed Non-Ventilated
- 1 and 1 1/2 HP are Totally Enclosed Fan Cooled
- Order Control Separately, see page 207



Part Number	Belt Speed		RPM	3 Phase				in-lbs	Nm
	Ft/min	m/min		Hp	kW	Volts	FLA		
74M080HS423EN	2 to 22	0.6 to 6.7	22	0.5	0.37	230 / 460	1.6 / 0.8	356	40.2
74M060HS423EN	3 to 29	0.9 to 8.8	29	0.5	0.37	230 / 460	1.6 / 0.8	442	49.9
74M040HS423EN	5 to 44	1.3 to 13.4	44	0.5	0.37	230 / 460	1.6 / 0.8	486	54.9
74M030HS423EN	6 to 58	2.0 to 17.7	58	1.0	0.74	208-230 / 460	3.2-3.0 / 1.5	487	55.0
74M020HS423EN	9 to 87	2.6 to 26.5	87	1.0	0.74	208-230 / 460	3.2-3.0 / 1.5	487	55.0
74M015HS423EN	12 to 117	3.6 to 35.7	117	1.0	0.74	208-230 / 460	3.2-3.0 / 1.5	470	53.1
74M010HS423EN	18 to 175	5.3 to 53.3	175	1.5	1.11	208-230 / 460	5.3-5.4 / 2.7	442	49.9
74M007HS423EN	23 to 233	7.1 to 71.0	233	1.5	1.11	208-230 / 460	5.3-5.4 / 2.7	360	40.7

FLA = Full Load Amperes

Some motors and gear reducers may normally operate hot to the touch. Consult factory for specific operating temperatures. Note: Dimensions = in (mm)

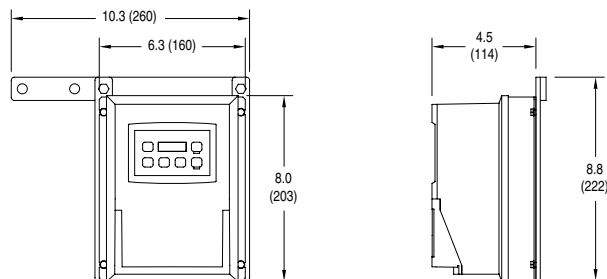
HIGHLIGHT

Highlighted gearmotors are not available with Nose Bar Drive and Nose Bar Idler tail. Maximum Nose Bar speed is 117 ft/min (35.7 m/min)

🔧 VARIABLE SPEED CONTROLLER

Chart A Variable Speed Controllers

- Variable Frequency Drive
- Nema 4X Enclosure
- Stainless steel enclosure and mounting hardware
- Digital Display
- Keypad with Start/Stop and Speed variation
- Includes cord to motor
- Power to controller by others
- UL Approved

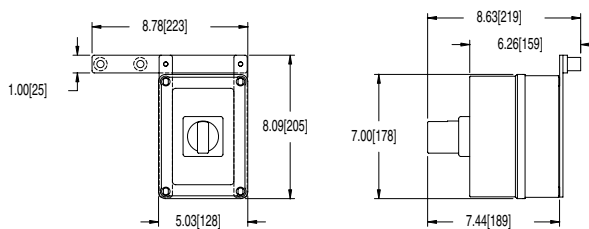


Part Number	Input			Output		Max Hp	Max Amps	A (width)	B (depth)
	Volts	Phase	Hz	Volts	Phase				
74MV1122S	115	1	60	230	3	0.5	2.2	7.9 (200)	3.8 (96)
74MV2322S	230	3	60	230	3	0.5	2.2	6.1 (155)	4.4 (112)
74MV1121S	115	1	60	230	3	1.0	4.0	7.9 (200)	4.9 (124)
74MV2121S	230	1	60	230	3	1.0	4.0	7.9 (200)	4.9 (124)
74MV4341S	460	3	60	460	3	1.0	2.0	6.1 (155)	4.4 (112)
74MV2127S	230	1	60	230	3	2.0	6.8	7.9 (200)	4.9 (124)
74MV2327S	230	3	60	230	3	2.0	6.8	7.9 (200)	4.9 (124)
74MV4347S	460	3	60	460	3	2.0	3.4	7.9 (200)	4.9 (124)

🔧 MANUAL MOTOR STARTER

Chart B Manual Motor Starter

- Nema 4X Plastic Enclosure
- Stainless Steel mounting hardware
- IP 66
- Start / Stop Switch
- Lock out tag out capable
- Includes wiring to Motor
- Power to Starter by others
- No plug/cord set included



Part Number	Input			FLA
	Volts	Phase	Hz	
74MM11F	115	1	60	6.3 - 10
74MM21D	208-230	1	60	2.5 - 3.9
74MM23A	208-230	3	60	0.63 - 0.99
74MM23B	208-230	3	60	1.0 - 1.59
74MM23C	208-230	3	60	1.6 - 2.4
74MM23D	208-230	3	60	2.5 - 3.9
74MM23E	208-230	3	60	4.0 - 6.3
74MM43A	460	3	60	1.6 - 2.4
74MM43B	460	3	60	2.5 - 3.9
74MM43C	460	3	60	0.63 - 0.99
74MM43D	460	3	60	1.0 - 1.59

FLA = Full Load Amperes