

# 2200 MPB SERIES: MODULAR SIDEWALL CLEATED BELT



## Specifications:

- Loads up to 150 lbs\* (68 kg)
- Belt speeds up to 150 ft/min (46 m/min)
- Belt widths: 11.25" (286 mm) to 23.25" (591 mm)
- Conveyor lengths: 2' (610 mm) to 30' (9,144 mm)
- 0.59" (15 mm) pitch belt
- 2.6" (66 mm) diameter drive pulley
- 1.18" (30 mm) minimum cleat spacing
- 2" (51 mm) high cleats, other heights available, contact factory
- 12 mm integral drive shaft
- CE models available

\* Conveyor load capacity depends on conveyor size, incline, motor position, accumulated loads and other factors.

## Features & Benefits:

- Rugged spherical ball bearings are sealed for life
- Small 0.59" (15 mm) chain pitch for smooth belt operation
- 2.6" (66 mm) diameter end pulley for small product transfers
- Minimal catenary belt sag reduces cordial action and improves safety
- Fully supported and guided belt reduces noise and offers improved side load
- T-slots make mounting accessories simple with no drilling or special tools
- Sealed ball bearings

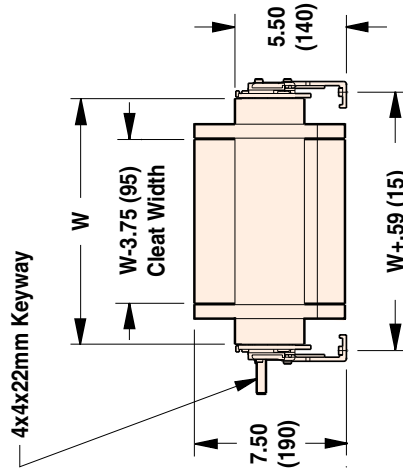
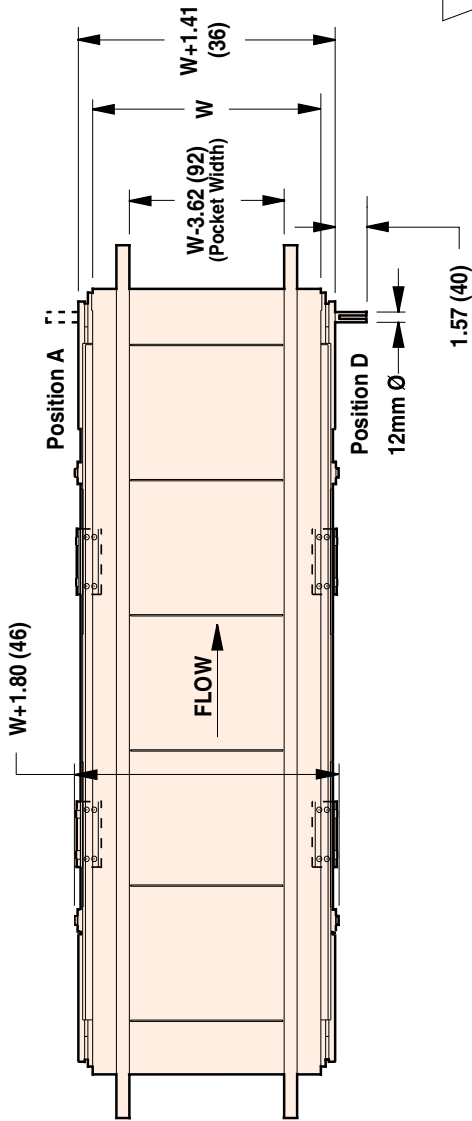


For cooling / draining applications  
(12" and wider).

*Order gearmotor mounting packages and gearmotors separately, see pages 39-56.  
For support stands and accessories, see pages 59-69.*

**For ordering information, see page 73**

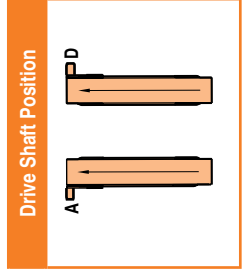
**2200 MPB SERIES: SIDEWALL CLEATED BELT CONVEYORS**



W = Conveyor Belt Width Dim = in (mm)

STANDARD SIZES			
Conveyor Width Reference	12	18	24
Conveyor Belt Width (W)	11.25" (286mm)	17.25" (438mm)	23.25" (591mm)
Conveyor Length Reference	0200	0002 increments up to...	
Conveyor Length (L)	2' (610mm)	0.24" (6mm) increments up to... 30' (9,144mm)	

NOTE: Conveyor longer than 12' (3,658 mm) will be constructed using a multiple piece frame. Consult factory for locations.



For more information, go to [www.dorner.com](http://www.dorner.com). Call 800.397.8664 or 262.367.7600.  
Due to the wide variety of drive set ups and applications, point of installation guarding is the responsibility of the end user.