

3200 SERIES: CLEATED BELT END DRIVE



Specifications:

- Loads up to 400 lbs* (181 kg)
- Belt speeds up to 600 ft/min (183 m/min)
- Belt widths: 3.75" (95 mm) to 24" (610 mm)
- Conveyor lengths: 3' (914 mm) to 40' (12,192 mm)
- Cleats available from 0.24" (6 mm) to 2.36" (60 mm) high
- 2" (51 mm) minimum cleat spacing
- 1.62" (41 mm) of belt take-up on conveyors up to 20' long
- 3.24" (82 mm) of belt take-up on conveyors over 20' long
- 3" (76 mm) diameter drive pulley turns approximately 9.7" (246 mm) of belt per revolution
- **CE** models available

* Conveyor load capacity depends on conveyor size, incline, motor position, accumulated loads and other factors.

Features & Benefits:

- Quick five-minute belt change
- Rack and pinion belt tensioning for fast, accurate single point belt tensioning
- V-groove bed plate with guided belt provides positive belt tracking, even under demanding side load applications
- V-guided belts eliminate belt tracking
- Strong, box-like construction resists damaging frame twist
- Stand mounting brackets and return belt rollers are easily re-positioned along the frame
- Special length conveyors in 0.12" (3 mm) increments at standard price and delivery
- Two T-Slots on each side for easy mounting of pre-engineered accessories



OPTIONAL:
Sidewall Cleated Belt

Used for small part handling. Available in 6" (152 mm) and wider belt widths.

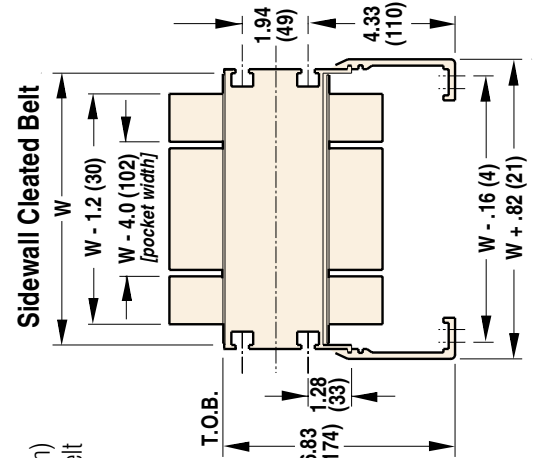
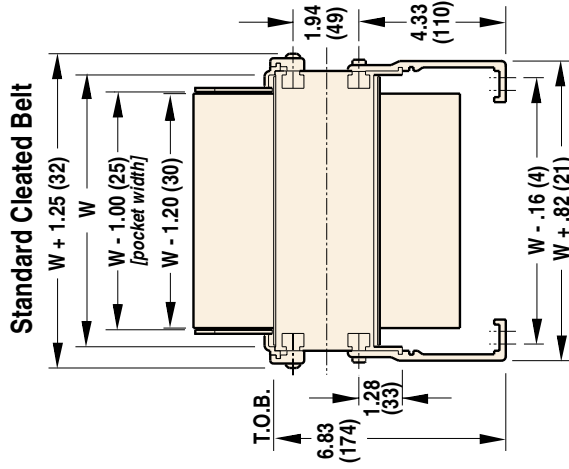
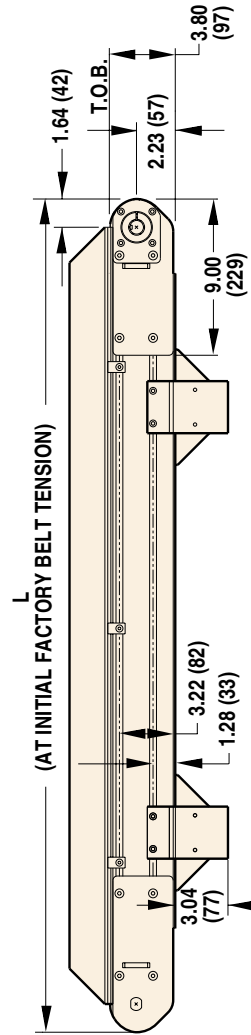
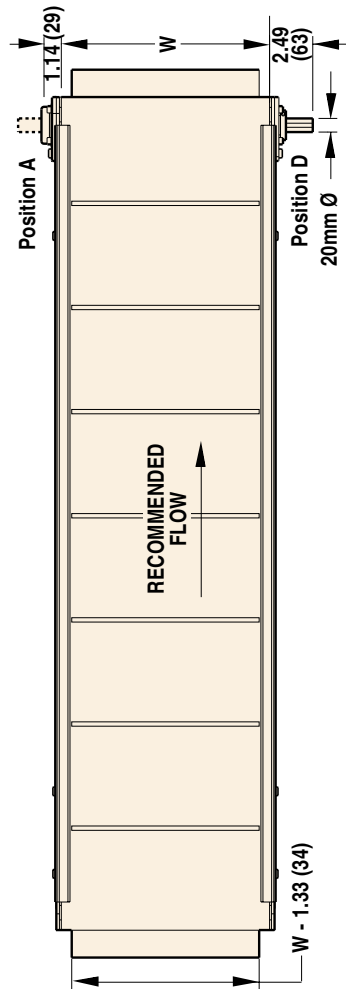


STANDARD FEATURE:
Rack and Pinion

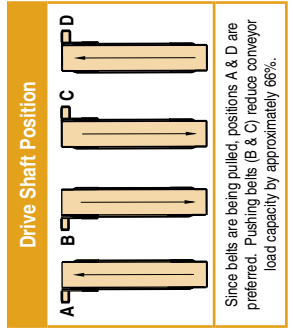
Allows the tail section to be easily slid back for quick belt removal.

*Order gearmotor mounting packages and gearmotors separately, see pages 98-109.
For support stands and accessories, see pages 113-122.*

For ordering information, see page 124



W = Conveyor Belt Width Dim = in (mm)
Note: 6" min width for Sidewall Cleated Belt



STANDARD SIZES			
Conveyor Width Reference	04 06	02 increments up to...	24
Conveyor Belt Width (W)	3.75" (95mm)	6" (152mm)	24" (1,219mm)
Conveyor Length Reference	0300	0001 increments up to...	4000
Conveyor Length (L)	3' (914mm)	0.12" (3mm) increments up to...	40' (6102mm)

NOTE: Conveyor longer than 12' (3,658mm) will be constructed using a multiple piece frame. Consult factory for locations.