

3200 SERIES: GEARMOTOR MOUNTING PACKAGES

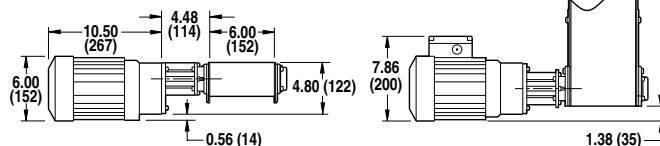
GEARMOTOR MOUNTING PACKAGE & GEARMOTOR SELECTION STEPS

- Step 1:** Select a **Gearmotor Mounting Package**. For End drive conveyors, select a side, bottom or top drive mount (pages 99-101). If a Center Drive conveyor is being outfitted, refer to the Center Drive section on page 101. Be sure to note if it is for a **90°** or **Parallel Shaft Gearmotor**.
- Step 2:** Using **Belt Speed and Load** Requirements, determine the required **Gearmotor Type** (Light, Heavy or Standard) for your application using the chart below.
- Step 3:** Find the appropriate set of Belt Speed Charts (page 101) for the Mounting Package you selected and choose between the **Fixed** or **Variable Speed** chart.
- Step 4:** Go down the first column of the Belt Speed Chart and locate the required **Belt Speed** for your application. If the desired belt speed is not listed, round up to the next higher speed.
- Step 5:** From the row containing your required **Belt Speed**, check to be sure that speed is available for the **Mount Package** you chose. (End Drive Only - Top, Bottom or Side)
- Step 6:** Use the Drive / Driven Pulley Kit combination to complete your Mounting Package Part Number
- Step 7:** Note the **RPM from Gearmotor**, it will be needed to select the correct Gearmotor from the Gearmotor Chart.
- Step 8:** Reference the **Gearmotor Chart #** to locate a compatible Gearmotor Chart on pages 102-109. Be sure to select a Gearmotor Chart to match your **Gearmotor Type** (Light, Standard or Heavy) and your **Mounting Package** while meeting your electrical requirements.
(Red = Parallel Shaft or Blue = 90°)
- Step 9:** Using the **RPM from Gearmotor** (Step 6), locate the **Part Number** for your Gearmotor from the Gearmotor Table.

	GEARMOTOR TYPE	Conveyor Load - Lbs (Kg)												
		Light Load	Standard Load	Heavy Load	10 (4.5)	25 (11.4)	50 (22.7)	75 (34.1)	100 (45.5)	150 (68.2)	200 (90.9)	400 (181.9)	550 (250)	700 (318.2)
Belt Speed - Ft/min (m/min)	0-15 (0-4.6)													
16-30 (4.9-9.1)														
31-45 (9.5-13.7)														
46-60 (14-18.3)														
61-75 (18.6-22.9)														
76-90 (23.2-27.4)														
91-110 (27.7-33.5)														
111-130 (33.8-39.6)														
131-150 (39.9-45.7)														
151-175 (46-53.4)														
176-200 (53.7-61)														
201-225 (61.3-68.6)														
226-250 (68.9-76.2)														
251-275 (76.5-83.8)														
276-300 (84.1-91.4)														
301-350 (91.7-106.7)														
351-400 (107-121.9)														
401-450 (122.2-137.1)														

3200 SERIES: GEARMOTOR MOUNTING PACKAGES

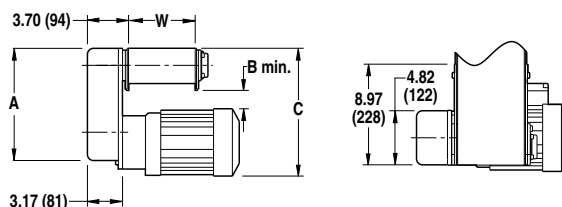
Side Mount Package, Parallel Shaft Gearmotor



- Includes gearmotor mounting bracket, 3 jaw flexible coupling, coupling guard and mounting hardware

W = Conveyor Belt Width

Bottom Mount Package, Parallel Shaft Gearmotor

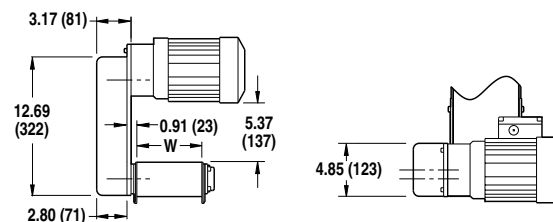


A:	Flat Belt	= 10.00 (254)	B:	Flat Belt	= 1.64 (42)	C:	Flat Belt	= 11.39 (289)
	Cleated Belt	= 12.69 (322)		Cleated Belt	= 4.33 (110)		Cleated Belt	= 14.08 (357)

- Includes gearmotor mounting bracket, timing belt, pulleys, guard and mounting hardware
- Conveyor belt speed can be adjusted with optional ratio pulley kits

W = Conveyor Belt Width

Top Mount Package, Parallel Shaft Gearmotor



- Includes gearmotor mounting bracket, timing belt, pulleys, guard and mounting hardware
- Conveyor belt speed can be adjusted with optional ratio pulley kits

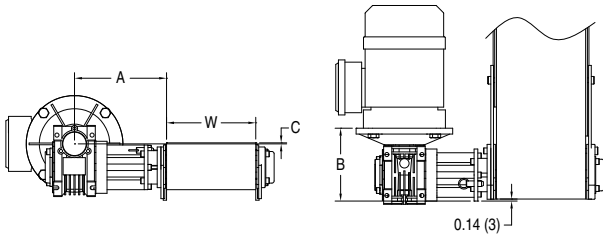
W = Conveyor Belt Width

Note: Conveyor and gearmotor are not included in the mounting package and must be ordered separately. Dimensions = in (mm)

For ordering information, see page 126

3200 SERIES: GEARMOTOR MOUNTING PACKAGES

Side Mount Package, 90° Gearmotor



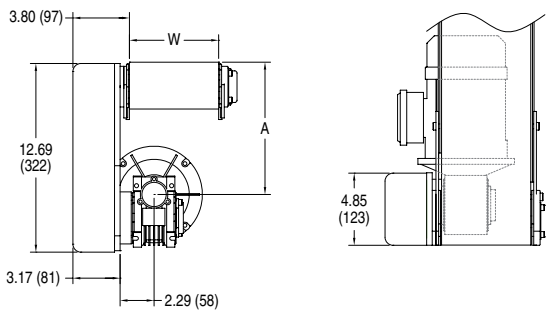
A: Standard Load	= 5.26 (134)	B: Standard Load	= 4.39 (111)	C: Standard Load	= 0.46 (12)
Heavy Load	= 6.18 (157)	Heavy Load	= 4.90 (124)	Heavy Load	= 0.07 (2)



- Includes gearmotor mounting bracket, 3-jaw flexible coupling, coupling guard and mounting hardware

W = Conveyor Belt Width

Bottom Mount Package, 90° Gearmotor



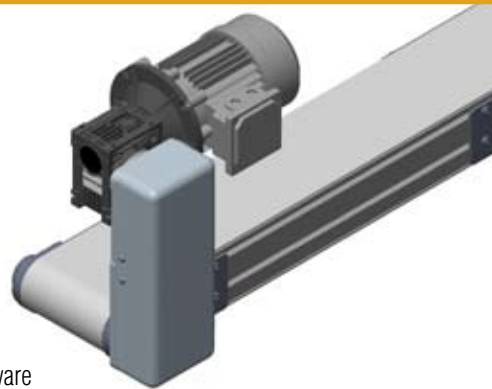
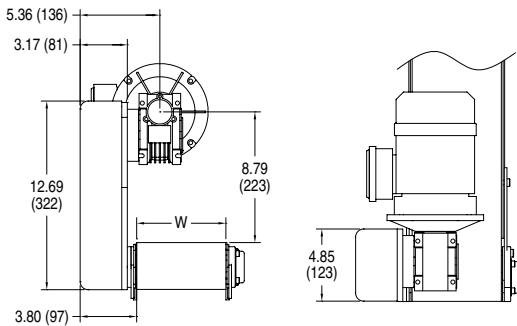
A: Flat Belt	= 8.90 (226)
Cleated Belt	= 10.47 (266)



- Includes gearmotor mounting bracket, timing belt, pulleys, guard and mounting hardware
- Conveyor belt speed can be adjusted with optional ratio pulley kits

W = Conveyor Belt Width

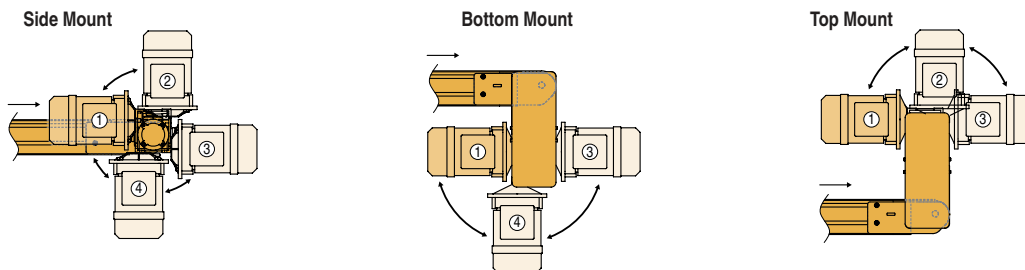
Top Mount Package, 90° Gearmotor



- Includes gearmotor mounting bracket, timing belt, pulleys, guard and mounting hardware
- Conveyor belt speed can be adjusted with optional ratio pulley kits

W = Conveyor Belt Width

90° Gearmotor Location Options



Note: Conveyor and gearmotor are not included in the mounting package and must be ordered separately. Dimensions = in (mm)

For ordering information, see page 126

3200 SERIES: BELT SPEED CHARTS

Refer to the Gearmotor Selection Steps on page 98 for instructions on using the Belt Speed Charts.

END DRIVE BELT SPEED CHARTS

Fixed Speed

Belt Speed		RPM From Gearmotor	Mount Package		Pulley Kit		Gearmotor Chart	
Ft/min	m/min		Top & Bottom	Side & Gang	Drive Pulley	Driven Pulley	Light Load	Standard Load
8	2.4	10	x	x	16	16		7
11	3.4	10	x		24	16		7
23	7.0	29	x	x	16	16	1	6, 7
34	10.4	43	x	x	16	16	1	6
46	14.0	58	x	x	16	16		7
52	15.8	43	x		24	16	1	6
69	21.0	86	x	x	16	16	1	6, 7
103	31.4	86	x		24	16	1	6, 7
137	41.8	173	x	x	16	16	1	6, 7
172	52.4	173	x		20	16	1	6, 7
206	62.8	173	x		24	16	1	6, 7
275	83.8	345	x	x	16	16		6, 7
343	104.5	345	x		20	16		6, 7
412	125.6	345	x		24	16		6, 7

CE Gearmotor RPM at 50 Hz.								
19	5.8	23*	x	x	16	16	2	8
28	8.5	35*	x	x	16	16	2	8
42	12.8	35*	x		24	16	2	8
56	17.1	70*	x	x	16	16	2	8
84	25.6	70*	x		24	16	2	8
111	33.8	140*	x	x	16	16	2	8
139	42.4	140*	x		20	16	2	8
167	50.9	140*	x		24	16	2	8
223	68.0	280*	x	x	16	16	2	8
279	85.0	280*	x		20	16	2	8
334	101.8	280*	x		24	16	2	8
382	116.4	280*	x		24	16	2	8

Note: Cleated Belts operate at maximum 280 ft/min (86 m/min)

Red = Parallel Shaft, Blue = 90°

Variable Speed

Belt Speed		RPM From Gearmotor	Mount Package		Pulley Kit		Gearmotor Chart	
Ft/min	m/min		Top & Bottom	Side & Gang	Drive Pulley	Driven Pulley	Light Load	Standard Load
1.3 - 11	.4 - 3.4	14	x	x	16	16		12
2 - 17	.6 - 5.1	14	x		24	16		12
2.3 - 23	.7 - 7.0	29	x	x	16	16	4	10, 13, 14
3.4 - 34	1.0 - 10.5	43	x	x	16	16	4	10, 14
4 - 33	1.2 - 10	42	x	x	16	16	3	9, 12
5 - 51	1.51 - 15.1	43	x		24	16	4	10, 14
6 - 50	1.8 - 15	63	x	x	16	16	3	9
7 - 68	2.1 - 20.9	86	x	x	16	16	4	10, 13, 14
8 - 66	2.4 - 20	83	x	x	16	16		12
9 - 75	2.7 - 23	63	x		24	16	3	9
10 - 103	3.1 - 31.4	86	x		24	16	4	10, 13, 14
12 - 100	3.6 - 30	125	x	x	16	16	3	9, 12
14 - 137	4.2 - 41.9	173	x	x	16	16	4	10, 13, 14
18 - 150	5.5 - 45	125	x		24	16	3	9, 12
21 - 206	6.3 - 63	173	x		24	16	4	10, 13, 14
24 - 200	7.3 - 61	250	x	x	16	16	3	9, 12
27 - 275	8.4 - 83.7	345	x	x	16	16	4	10, 13, 14
30 - 250	9.1 - 76	250	x		20	16	3	9, 12
34 - 343	10.5 - 104.6	345	x		20	16	4	10, 13, 14
36 - 300	11 - 92	250	x		24	16	3	9, 12
41 - 412	12.6 - 125.6	345	x		24	16	4	10, 13, 14
48 - 398	15 - 121	500	x	x	16	16		9

CE RPM from 50 Hz. gearmotors. VFD drive at 63 max. Hz. output.								
9.3 - 23	2.8 - 7.1	23*	x	x	16	16	5	11
13.9 - 35	4.2 - 11	35*	x	x	16	16	5	11
20 - 53	6.4 - 16	35*	x		24	16	5	11
28 - 70	8.5 - 21	70*	x	x	16	16	5	11
42 - 105	12.7 - 32	70*	x		24	16	5	11
55 - 140	17 - 43	140*	x	x	16	16	5	11
69 - 176	21 - 54	140*	x		20	16	5	11
84 - 210	25 - 64	140*	x		24	16	5	11
111 - 280	34 - 86	280*	x	x	16	16		11
139 - 351	42 - 107	280*	x		20	16		11
167 - 421	51 - 128	280*	x		24	16		11

CENTER DRIVE BELT SPEED CHARTS

Center Drive Package Selection Steps

- Step 1:** There is only one Mounting Package for 3200 & Z-frame Center Drive Conveyors which uses a 90° Heavy Load gearmotor.
- Step 2:** Refer to the set of Belt Speed Charts to the right for Center Drive Mounting Package and choose between the **Fixed** or **Variable Speed** chart.
- Step 3:** Go down the first column of the Belt Speed Chart and locate the required **Belt Speed** for your application. If the desired belt speed is not listed, round up to the next higher speed.
(Dorner offers much more than just the belt speeds listed in the tables, contact the factory for complete details)
- Step 4:** Note the **RPM from Gearmotor**, it will be needed to select the correct Gearmotor from the Gearmotor Chart.
- Step 5:** Reference the **Gearmotor Chart #** to locate a compatible Gearmotor Chart on pages 106-107. Be sure to select a Gearmotor that meets your electrical requirements.
- Step 6:** Using the **RPM from Gearmotor** (Step 4), locate the **Part Number** for your Gearmotor from the Gearmotor Table.

Fixed Speed

Belt Speed		RPM From Gearmotor	Gearmotor Chart #
Ft/min	m/min		
28	8.4	17	15
35	10.5	22	15
46	14.0	29	15
55	16.8	35	15
69	21.0	43	15
92	28.0	58	15
110	33.7	70	15
138	42.1	86	15
184	56.1	115	15
276	84.1	173	15
368	112.2	230	15

CE Gearmotor RPM at 50 Hz.			
22	6.8	14*	16
50	15.2	31*	16
75	22.8	47*	16
149	45.5	93*	16
320	97.6	200*	16

Variable Speed

Belt Speed		RPM From Gearmotor	Gearmotor Chart #
Ft/min	m/min		
2.8 - 28	.8 - 8.4	17	18, 19
3.5 - 35	1.1 - 10.5	22	18
4 - 40	1.2 - 12.2	25	17
4.6 - 46	1.4 - 14.0	29	18, 19
5 - 50	1.5 - 15.2	31	17
5.5 - 55.2	1.7 - 16.8	35	18
6.7 - 66.7	2.0 - 20.3	42	17
6.9 - 69	2.1 - 21.0	43	18, 19
9.2 - 92	2.8 - 28.0	58	18
11 - 110.4	3.4 - 33.7	70	18, 19
13.8 - 138	4.2 - 42.1	86	18, 19
18.4 - 184	5.6 - 56.0	115	18, 19
27.6 - 276	8.4 - 84.1	173	18
36.8 - 368	11.2 - 112.2	230	18

CE RPM from 50 Hz. gearmotors, VFD drive at 63 max. Hz. output.			
2.2-22.4	0.7-6.8	14*	20