

5200 & 5300 SERIES: SUPPORT STANDS

FIXED HEIGHT SUPPORT STANDS

Fixed Foot Model

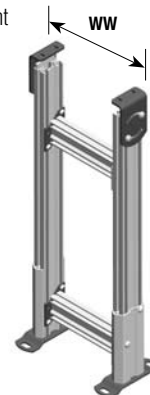
Stand Width (WW)	12" (305mm)	2" (51mm) increments up to...	60" (1,524mm)
Part # Reference	12	in 02 increments up to...	60
Stand Height (HH)*	21-25" (533 - 635mm)	in 1" (25mm) increments up to...	95-99" (2,413 - 2,515mm)
Part # Reference	2125	in 0101 increments up to...	9599

Swivel Locking Caster Model

Stand Width (WW)	12" (305mm)	2" (51mm) increments up to...	48" (1,219mm)
Part # Reference	12	in 02 increments up to...	48
Stand Height (HH)*	26-30" (660 - 762mm)	in 1" (25mm) increments up to...	74-78" (2,413 - 2,515mm)
Part # Reference	2630	in 0101 increments up to...	7478

- Metric fasteners
- 4" (102 mm) Height Adjustment

* Dependent on stand width, stands over 42" (1,067 mm) may include outriggers (image on page 178)



ADJUSTABLE HEIGHT SUPPORT STANDS

Fixed Foot Model

Stand Width (WW)	12" (305mm)		2" (51mm) increments up to...				60" (1,524mm)				
Part # Reference	12		in 02 increments up to...				60				
Stand Height (HH)	18-19" (457-483)	19-21" (483-533)	20-23" (508-584)	22-27" (559-686)	25-32" (635-813)	30-42" (762-1067)	36-54** (914-1,372)	48-66** (1,219-1,676)	60-78** (1,524-1,981)	72-90** (1,829-2,286)	81-99** (2,057-2,515)
Part # Reference	1819	1921	2023	2227	2532	3042	3654	4866	6078	7290	8199

Swivel Locking Caster Model

Stand Width (WW)	12" (305mm)		2" (51mm) increments up to...				60" (1,524mm)				
Part # Reference	12		in 02 increments up to...				60				
Stand Height (HH)	23-24" (584-610)	24-26" (610-660)	25-28" (635-711)	27-32" (686-813)	30-37" (762-940)	35-47" (889-1,194)	41-59" (1,041-1,499)	53-71** (1,346-1,803)	65-83** (1,651-2,108)		
Part # Reference	2324	2426	2528	2732	3037	3547	4159	5371	6583		

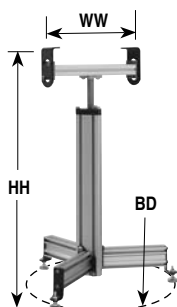
- Metric fasteners

* Dependent on stand width, stands over 42" (1,067 mm) may include outriggers (image on page 178)

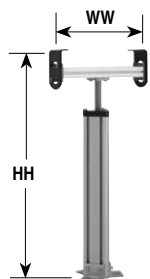


Full width is top plate on 12" wide stands only

SINGLE POST & PILLAR SUPPORT STANDS



Single Post Support Stand



Pillar Stand
(must be secured to floor)

Standard Sizes

Stand Width (WW)	8" (203)	10" (254)	12" (305)	14" (356)	16" (406)	18" (457)
Part # Reference	08	10	12	14	16	18
Stand Height (HH)*	22-32" (559-813)	30-40" (762-1,016)	38-48" (965-1,219)	46-56" (1,168-1,422)	54-64" (1,372-1,626)	
Part # Reference	2232	3040	3848	4656	5464	
Base Diameter (BD)	24" (610)	27" (686)	30" (762)	33" (838)	36" (915)	

- Casters do not change overall height
- Metric fasteners

Note: Dimensions = in (mm)

Note: Due to the wide variety of conveyor and stand options along with possible configurations, stability of the final setup is the responsibility of the end user.

For ordering information, see page 187

5200 & 5300 SERIES: SUPPORT STANDS

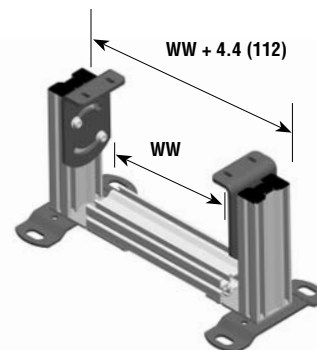
SHORT SUPPORT STANDS

Fixed Foot Model

Stand Width (WW)	12" (305mm)	2" (51mm) increments up to...				60" (1,524mm)	
Part # Reference	12	in 02 increments up to...				60	
Stand Height (HH)*	12-14" (305-356mm)	13-15" (330-381mm)	14-16" (356-406mm)	15-17" (381-432mm)	16-18" (406-457mm)	17-19" (432-483mm)	18-20" (457-508mm)
Part # Reference	1214	1315	1416	1517	1618	1719	1820

Swivel Locking Caster Model

Stand Width (WW)	12" (305mm)	2" (51mm) increments up to...				60" (1,524mm)	
Part # Reference	12	in 02 increments up to...				60	
Stand Height (HH)*	17-19" (432-483mm)	18-20" (457-508mm)	19-21" (483-533mm)	20-22" (508-559mm)	21-23" (533-584mm)	22-24" (559-610mm)	23-25" (584-635mm)
Part # Reference	1719	1820	1921	2022	2123	2224	2325



Full width is top plate on 10" wide stands only

FULLY ADJUSTABLE SUPPORT STANDS

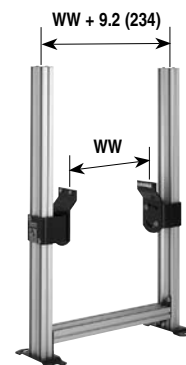
Fixed Foot Model

Stand Width (WW)	8" (203)	2" (51mm) increments up to...			60" (1,524)
Part # Reference	08	in 02 increments up to...			60
Top of Belt Range	7-19" (178-483)	15-34" (381-864)	15-46" (381-1,168)	15-58" (381-1,473)	15-70" (381-1,778)
Stand Height Reference	0719	1534	1546	1558	1570

Swivel Locking Caster Model

Stand Width (WW)	8" (203)	2" (51mm) increments up to...			60" (1,524)
Part # Reference	08	in 02 increments up to...			60
Top of Belt Range	12-19" (305-483)	20-34" (508-864)	20-46" (508-1,168)	20-58" (508-1,473)	20-70" (508-1,778)
Stand Height Reference	1219	2034	2046	2058	2070

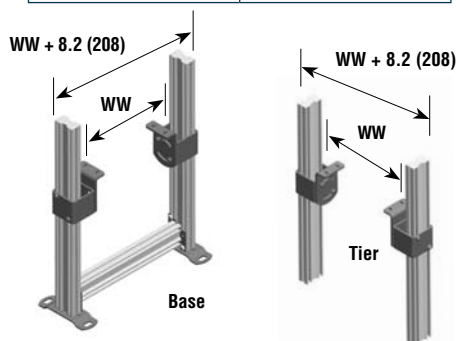
- Metric fasteners



MULTI TIER STANDS

Minimum Tier Height Per Conveyor

Flat Belt	12" (305mm)
Cleated Belt	15" (381mm)



Full width is top plate on 12" wide stands only

Base

Stand Width (WW)	12" (305mm)	2" (51mm) increments up to...		48" (1,219mm)
Part # Reference	12	in 02 increments up to...		48
Stand Height (HH)*	12" (305mm)	2" (51mm) increments up to...		60" (1,524mm)
Part # Reference	1212	in 0002 increments up to...		1260

Tier

Stand Width (WW)	12" (305mm)	2" (51mm) increments up to...		48" (1,219mm)
Part # Reference	12	in 02 increments up to...		48
Stand Height (HH)*	12" (305mm)	1" (25mm) increments up to...		36" (914mm)
Part # Reference	0712	in 0002 increments up to...		0736

Note: Do not use with support stands equipped with casters. Support Stands must be anchored to the floor. Do not use if conveyed product overhangs the edge of the conveyor belt due to pinch point created.

Note: Due to the wide variety of conveyor and stand options along with possible configurations, stability of the final setup is the responsibility of the end user.

For ordering information, see page 187

5200 & 5300 SERIES: SUPPORT STANDS

QUICK ADJUST STANDS

Fixed Foot Model

Stand Width (WW)*	6" (305mm)	2" (51mm) increments up to...	36" (914mm)
Part # Reference	06	in 02 increments up to...	36
Stand Height (HH)*	24" - 30" (610 - 762mm)	in 1" (25mm) increments up to...	66" - 72" (1,676 - 1,829mm)
Part # Reference	2430	in 0101 increments up to...	6672

Swivel Locking Caster Model

Stand Width (WW)*	12" (305mm)	2" (51mm) increments up to...	36" (914mm)
Part # Reference	12	in 02 increments up to...	36
Stand Height (HH)*	27" - 33" (686 - 838mm)	in 1" (25mm) increments up to...	60" - 66" (1,524 - 1,676mm)
Part # Reference	2733	in 0101 increments up to...	6066

* Under 12" wide use full top plate option

- Metric fasteners
- +/- 3" (76 mm) Height Adjustment
- Allows for Quick Height Adjustment
- Tool-less locking and adjustable handles



Fixed Foot Model

Swivel Locking Caster Model

A-FRAME STANDS

Fixed Foot Model

Stand Width (WW)	6" (44mm)	2" (51mm) increments up to...	36" (610mm)
Part # Reference	06	in 02 increments up to...	36
Top of Belt Height (HH)*	14" - 18" (356 - 457mm)	in 1" (25mm) increments up to...	56" - 60" (1,422 - 1,524mm)
Part # Reference	1418	in 0101 increments up to...	5660

Swivel Locking Caster Model

Stand Width (WW)	6" (44mm)	2" (51mm) increments up to...	24" (610mm)
Part # Reference	06	in 02 increments up to...	24
Top of Belt Height (HH)*	18" - 20" (457 - 508mm)	in 1" (25mm) increments up to...	58" - 60" (1,473 - 1,524mm)
Part # Reference	1820	in 0101 increments up to...	5860

* From floor to top of belt

- Metric fasteners
- +/- 2" (51 mm) Height Adjustment for Fixed Foot model
- +/- 1" (25 mm) Height Adjustment for Swivel Locking Caster model
- One (1) SmartSlot per side



Fixed Foot Model

Swivel Locking Caster Model

Note: Dimensions = in (mm)

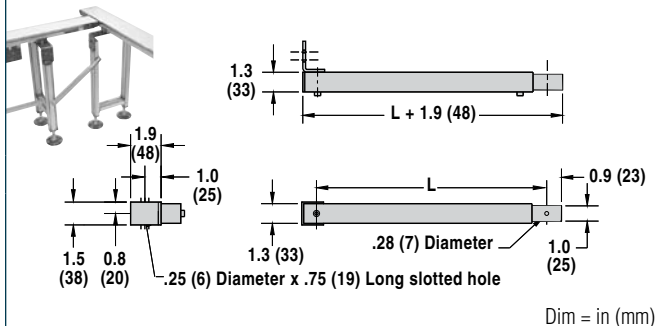
Note: Due to the wide variety of conveyor and stand options along with possible configurations, stability of the final setup is the responsibility of the end user.

For ordering information, see page 187

5200 & 5300 SERIES: SUPPORT STANDS

STAND ACCESSORIES

Adjustable Tie Bracket



- Compatible with steel and aluminum support stands
- Secure critical stand and conveyor locations
- Length (L) adjusts + 0", - 11.25" (286 mm)
- Includes metric mounting hardware

Part Number	Description
27M400-02	Adjustable Tie Bracket, 2' (610 mm)
27M400-03	Adjustable Tie Bracket, 3' (914 mm)
27M400-04	Adjustable Tie Bracket, 4' (1,219 mm)
27M400-05	Adjustable Tie Bracket, 5' (1,524 mm)
27M400-06	Adjustable Tie Bracket, 6' (1,829 mm)

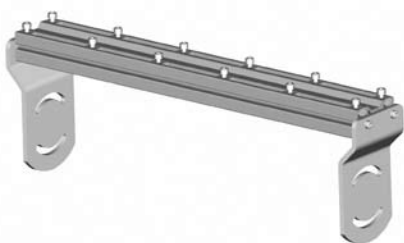
Diagonal Bracing



- For use on steel, aluminum and single post support stands with casters
- Metric fastener mounting hardware included
- For use on all stands with casters and any stands over 72" (1829 mm) tall
- One brace per stand for conveyors up to 24" wide (610 mm)
- Two braces per stand for conveyors over 24" wide (610 mm)

Part Number	Description
39MB-TS	for two-legged H style stands up to 30" tall (762 mm)
39MB-TT	for two-legged H style stands over 30" tall (762 mm)
39MB-PT	for Single Post and Pillar stands over 30" tall (762 mm)

Common Mount Kit



- Stand accessory for mounting multiple conveyors in parallel to one stand
- Adds 2" (51 mm) to stand height
- Adds 2.79" (71 mm) to overall stand width

For ordering information, see page 187

Tall Support Stands

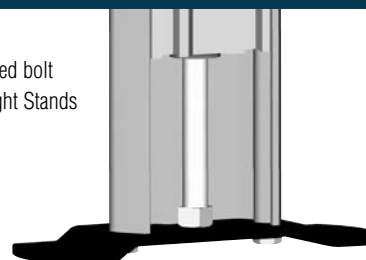


Tall Stands are the Fixed Height and Adjustable Height Stands as shown with additional outrigger support for added stability. These outriggers are required when the height of the stand exceeds 3.5x its width, and they add 16" to stand width. Tall stands over 6' tall include diagonal bracing.

Outriggers

Fine Adjustment Kit

- Provides fine height adjustment via a threaded bolt
- For use with Fixed Height Stands



Part # 710028

Note: Due to the wide variety of conveyor and stand options along with possible configurations, stability of the final setup is the responsibility of the end user.