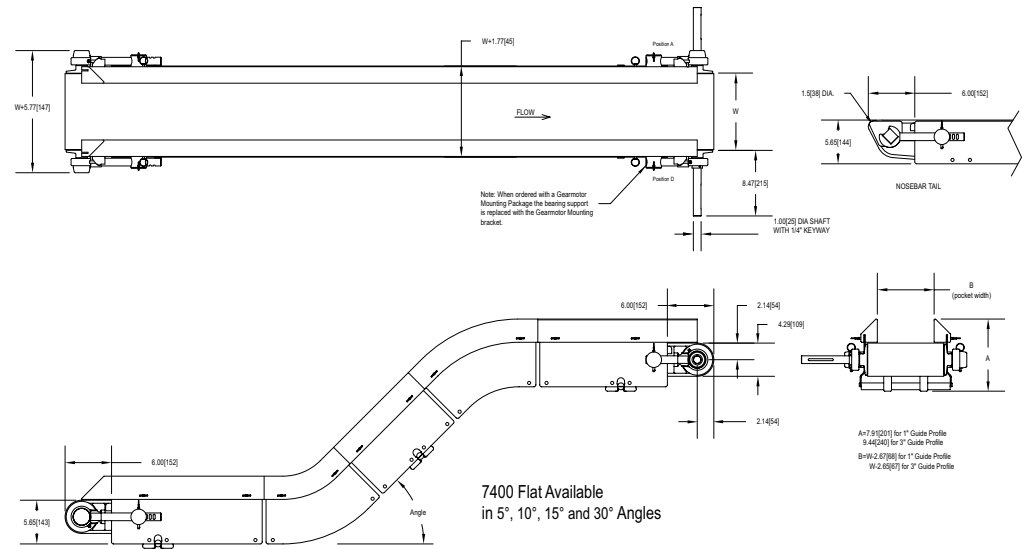


# DORNER<sup>®</sup>

# AquaPruf<sup>®</sup> 7400 SERIES: LPZ Flat Plastic Chain Conveyor



## Specifications:

- Belt Widths: 6" to 24" (152mm to 610mm)
- Section Lengths 24" (610mm) to 38' (11.6m)
- Total conveyor lengths to 40' (12.2m)
- Loads up to 20 lbs. per square foot of belt (90 Kg/m<sup>2</sup>)
- Belt Speed: 233 ft/min maximum (71 meters/min)
- 5°, 10°, 15° & 30° Fixed Angle Modules standard (inclines over 5° require friction insert belting)
- Horizontal to Incline, Nose-Over & Z-Frame Configurations.
- Continuous TIG Welded 304 stainless steel frame
- #4 Polish on all outside surfaces
- Bearing material is 400 stainless steel
- Bearing lubricant is H1 type FDA lubricant
- UHMW Wear strip bed plate
- FDA Approved belting and plastic components

## Features & Benefits:

- Frame is constructed of continuous TIG welded 304 stainless steel and is designed with minimal horizontal surfaces for optimum cleaning. Conveyors over 10' (3048mm) consist of multiple sections which are bolted together.
- All bearings are 400 stainless steel, filled with H1 FDA lubricant and mounted in cast stainless steel housings for maximum performance in washdown environments.
- Solid UHMW wear strips are easily lifted out of the frame without tools to minimize cleaning time.
- Belt tensioning mechanism is constructed of 304 stainless steel for easy cleaning. Externally mounted to the frame with adequate clearances for cleaning. No external threads are used.
- Conveyor is designed to withstand high pressure (100-1500 PSI) spray and chlorinated solutions.
- Frame cut-outs (optional) are available to allow spraying the inside of the conveyor without lifting the belt.
- The return belt supports are segmented plastic slide blocks and are easily removed without tools for effective cleaning.
- Drive sprockets are mounted to a 1.5" square stainless steel shaft without fasteners to provide optimum drive strength and cleanability.
- Nose bar idler ends (optional) are constructed of a machined UHMW bar to provide a 1.5" diameter transfer.
- The nose bar drive configuration (optional) allows the use of the Nose Bar transfer on each end of the conveyor for small product transfers.
- Belt Lifters (optional) raise the belt from the wear strips by simply pulling an external lever for fast access and effective cleaning.
- The tool-less tip up pulley (optional) allows conveyor end to be lifted easily for quick access to inside of conveyor for cleaning.

Conveyor load capacity depends on conveyor size, incline, motor position, accumulated loads and other factors.



DORNER MFG. CORP.  
PO Box 20 • 975 Cottonwood Ave  
Hartland, WI 53029-0020 USA

INSIDE THE USA  
TEL: 800.397.8664  
FAX: 800.369.2440

OUTSIDE THE USA  
TEL: 262.367.7600  
FAX: 262.367.5827

[www.dorner.com](http://www.dorner.com)  
[info@dorner.com](mailto:info@dorner.com)