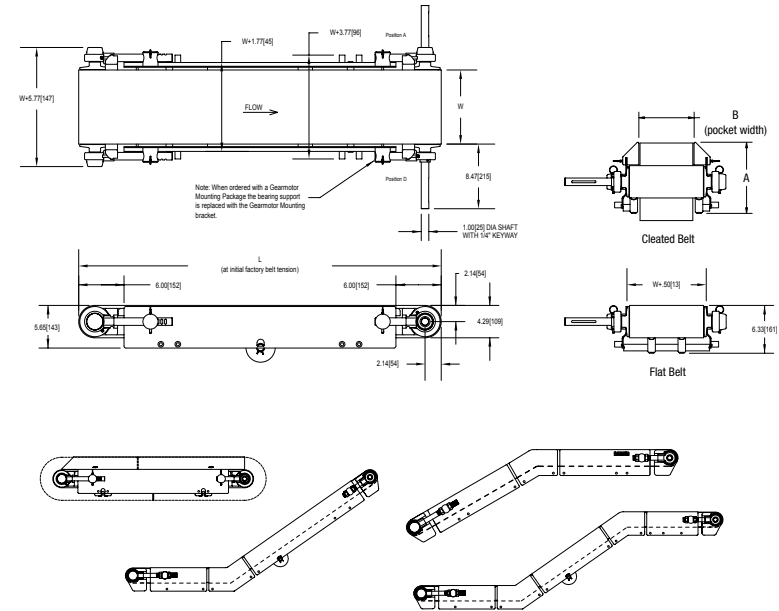
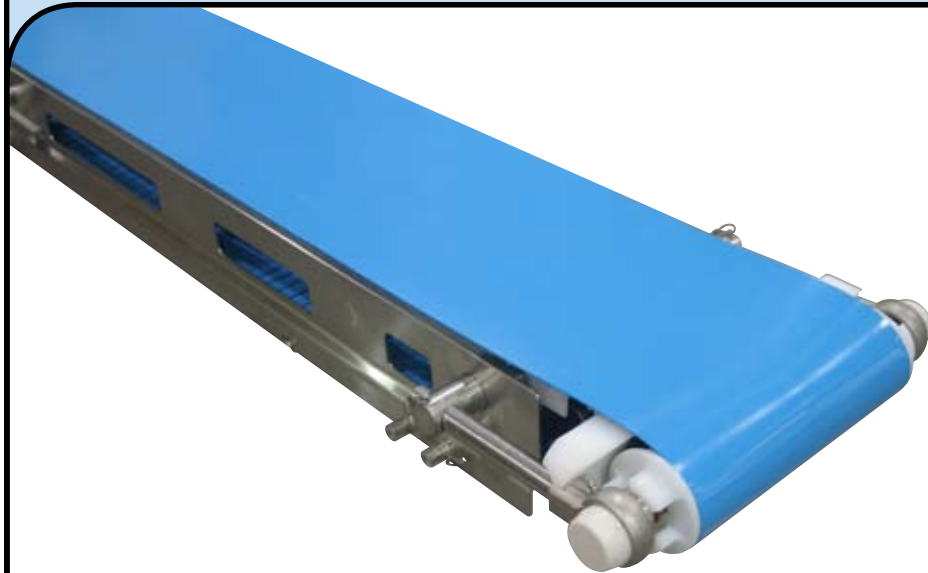


DORNER[®]**AquaPruf**[®] 7600 ULTIMATE SERIES: Positive Driven Belt Conveyor**Specifications:**

- Belt Widths: 6" to 36" (152mm to 914mm)
- Lengths 36" (914mm) to 40' (12.2m)
- Loads up to 20 lbs. per square foot of belt (90 Kg/m²)
- Solid urethane belting, includes Belt Scraper
- Belt Speed: 233 ft/min maximum (71 meters/min)
- Continuous TIG Welded 304 stainless steel frame
- #4 Polish on all frame surfaces
- Bearing material is 400 stainless steel
- Bearing lubricant is H1 type FDA lubricant
- UHMW Wear strip bed plate
- USDA Accepted belting
- Meets USDA, NSF & AMI design specifications
- Flat and Cleated Belt Models

Features & Benefits:

- Frame is constructed of continuous TIG welded 304 stainless steel and is designed with minimal horizontal surfaces for optimum cleaning. Conveyors over 10' (3048mm) consist of multiple sections which are bolted together. (can be welded together on site)
- All bearings are 400 stainless steel, filled with H1 FDA lubricant and mounted in cast stainless steel housings for maximum performance in washdown environments.
- Solid UHMW wear strips are easily lifted out of the frame without tools to minimize cleaning time.
- Belt tensioning mechanism is constructed of 304 stainless steel and is externally mounted to the frame with adequate clearances for cleaning. No external threads are used.
- Solid Urethane belt is sprocket driven for consistent performance and has no bacteria harboring hinges or pins.
- Open Belt Tracking Flanges and solid UHMW idler pucks create access to pulleys.
- Return Belt Supports are 4" UHMW Rollers and are easily removed without tools for effective cleaning.
- Conveyor is designed to withstand high pressure (100-1500 PSI) spray and chlorinated solutions.
- Frame cut-outs (optional) are available to allow spraying the inside of the conveyor without lifting the belt.
- Drive sprockets are mounted to a 1.5" square stainless steel shaft without fasteners to provide optimum drive strength and cleanability.
- Belt Lifters (optional) raise the belt from the wear strips by simply pulling an external lever for fast access and effective cleaning.
- The tool-less tip up pulley allows conveyor end to be lifted easily for quick access to inside of conveyor for cleaning.
- TIG welded stand offs keep fasteners out of the food zone.

Conveyor load capacity depends on conveyor size, incline, motor position, accumulated loads and other factors.

DORNER[®]
Performance in motion

DORNER MFG. CORP.
PO Box 20 • 975 Cottonwood Ave
Hartland, WI 53029-0020 USA

INSIDE THE USA
TEL: 800.397.8664
FAX: 800.369.2440

OUTSIDE THE USA
TEL: 262.367.7600
FAX: 262.367.5827

www.dorner.com
info@dorner.com