



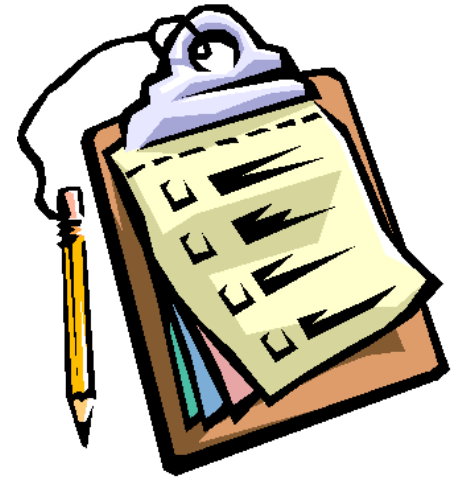
2200 Series Conveyors – V2

Channel Training

Stacy Johnson
Senior Marketing Manager

James Lubow
Product Manager – Packaging Conveyance

Agenda



- **Project Overview & Changes**
- **Product Specifications**
- **Summary, Compatibility, & Part # Changes**
- **The Dorner Value**
- **Launch Schedule**
- **Marketing Information**
- **Questions?**

Dorner Product Lines



1X Series

The 1X Series Line is designed for small part handling and transfers where space is a premium.

1X Series Family:

- Flat Belt
- Aluminum Frame
- Widths to 10"
- Loads to 15 lbs
- Speeds up to 80 fpm



2X Series

The 2X Series Line is engineered for small to medium sized parts, precision applications and flexible layouts.

2X Series Family:

- Flat Belt
- Cleated Belt
- Modular Belt
- Precision Move
- SmartFlex®
- Aluminum Frame
- Widths to 24"
- Loads to 200 lbs
- Speeds up to 400 fpm
- Curves
- Z-Frame Elevators



3X Series

The 3X Series Line is designed for medium to heavy sized parts, precision applications, bulk handling and flexible layouts.

3X Series Family:

- Flat Belt
- Cleated Belt
- Modular Belt
- Flexible Chain
- Precision Move
- Aluminum Frame
- Widths to 60"
- Loads to 1000 lbs
- Speeds up to 600 fpm
- Curves
- Z-Frame Elevators



7X Series

The 7X Series Stainless Steel Line is engineered for small to heavy product requiring various levels of sanitary design and flexible layouts.

7X Series Family:

- AquaPruf® + AquaGuard®
- Flat Belt
- Cleated Belt
- Modular Belt
- Flexible Chain
- Vertical Belt Technology
- Stainless Steel Frame
- Widths to 52"
- Loads to 750 lbs
- Speeds up to 400 fpm
- Curves
- Z-Frame Elevators

What's Happening?



- **2200 Series Conveyors →
Line Enhancement (Redesign)**
- **4 part launch:**
 - **2200 Series Belted – April 27th**
 - 2300 Series is being eliminated
 - NEW!** – **2200 Series Belted LPZ – Early June**
 - **2200 Series Modular Belt – Late June**
 - **2200 Series Precision Move – August**

Why the Change?

Goals for the Redesign



- ✓ **Make improvements to the product**
 - Improve the frame design
 - Additional belting options
 - Additional widths
 - Improve product transfers
 - Additional guiding options
 - Consolidate motor & control offering
- ✓ **Find cost savings**
- ✓ **Leverage your product knowledge**
 - Similar to the 3200/5200 Redesign

What is the Same? Product Compatibility

- The profile height is exactly the same
- Frame width is exactly the same
- The t-slots are in the exact same position
- The drive shaft is the same diameter and in the same position
- Same bearings in the tail
- All mount packages are identical
- Stand mount heights and bolt location are the same
- Belting is exactly the same part number and length

What's Different? Major Improvements:

- New Guide Options
- New Belting Options
- High Speed V-guided Nose Bar
- Strengthened Frame Construction
- New Frame Widths
- Universal T-Slot
- Gearmotor Consolidation
- Universal Drive
- Standard Common Drive



2200 V2 Belted Product Sizes by Drive

- **End Drive**
 - Loads up to 80 lbs
 - Belt speeds up to 400 ft/min
 - Belt widths: 1.75" - 24"
 - Conveyor lengths: 18" - 18'
- **Center Drive:**
 - Loads up to 120 lbs
 - Belt Speeds up to 400 ft/min
 - Belt widths: 1.75" - 24"
 - Conveyor lengths: 18" - 24'
- **Mid Drive**
 - Loads up to 80 lbs
 - Belt Speeds up to 400 ft/min
 - Belt widths: 1.75" - 24"
 - Conveyor lengths: 18" - 18'
- **iDrive:**
 - Conveyor Load Capacity up to 25 lbs. non-accumulated, distributed load. See manual.
 - Belt Speeds: Variable Speed, (4) Speed Options up to 70 ft/min. See manual.
 - Belt Widths: 1.75"-24"
 - Conveyor Lengths: 18" - 8'



End Drive



Center Drive



iDrive®



Mid Drive

2200 V2 – Frames

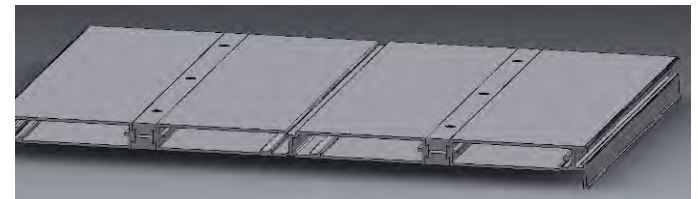
NEW WIDTHS!

Single Piece

- 2", 3", 4", 5", 6", 8", 10", 12"
- Hard anodized aluminum frame
- No frame mods at all!!

Multi-Piece

- 14", 16", 18", 20", 22", 24"
- Same features as single frame
- Hard anodized aluminum nut bars



2200 V2 - Frame Strength

- Deflection in length - From 1.5X to 3.5X stronger dependent of conveyor width (wider width improved more)
- Typical stand distanced moved from 6' to 8'
- Torsional Deflection - From 1.2X to 2.8X stronger dependent of conveyor width (narrow width improved more)



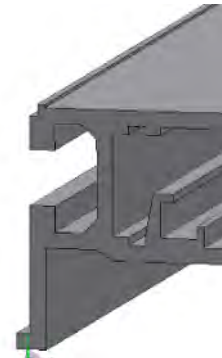
2200 V2 – Bedplate Durability

- Hard Anodized frame coating
- Hard Anodize will cover 99.5% of applications
- Alternatives (per order – ETO)
 - Stainless steel tape



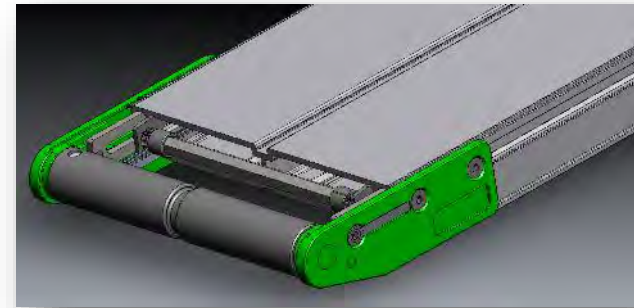
2200 V2 – Universal T-Slot

- Introduced on 2200 Precision Move Pallet System
- Uses new reduced cost T-Nuts
 - Note: Does not fit old spring nut
- Industry standard – Bosch, 8020
- Offering more standard tap sizes
 - (M3, M4, etc)



2200 V2 – Drive and Idler Tails

- Same spindle / bearing / belts
- R&P moved to outside frame
- Zinc die cast, black powder coat finished, head plates
- Steel reinforcing nut bar
- Slight cut back on end for ease of belt install
 - Tails are not backwards or forwards compatible (except spindle / bearings)
- No drilling needed to change shaft position
 - New punch style design (like electrical conduit box)



2200 V2 - Nose Bar Transfers

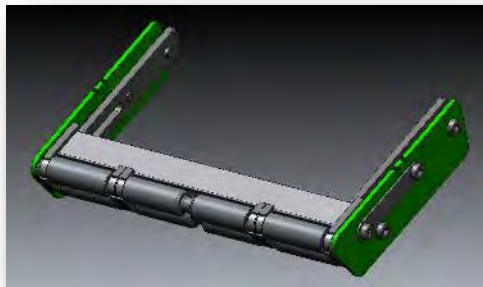
NEW!

5/8" high speed nose bar

- High Speed up to 200 FPM
- V-Guided Belt

5/16" nose bar

- Slower Speeds – 75 FPM
- Non V-Guided Belts Only
 - Cam tacking only
- Tighter Transfer



Anticipated that most nosebar sales will convert to 5/8" design (vs 5/16")

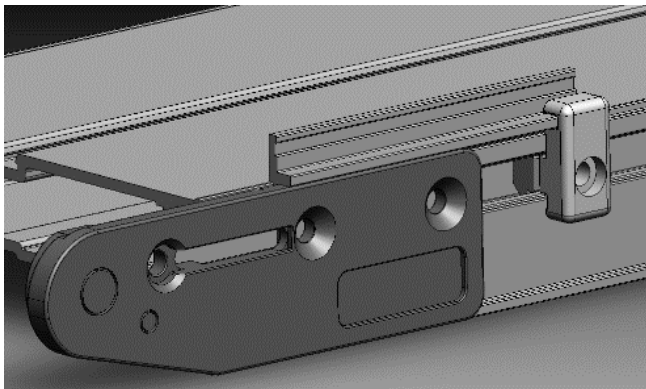
2200 V2 – Tail and Auxiliary Shaft Options

- Standard keyed aux (double output) shafts and magnet installed in idler still available
- **NEW!** STUB shaft can be configured for belted End Drive conveyors
 - Enables non ETO common drives!



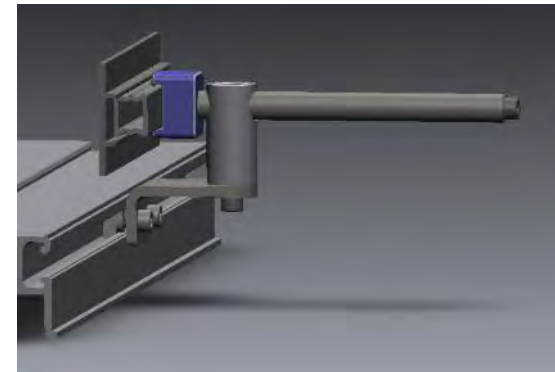
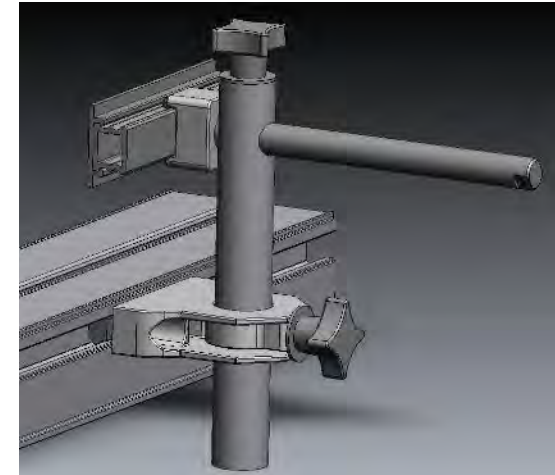
2200 V2 – Guiding

- All bolt on side Rails – (1/2", 1 1/2", cleated, etc.)
 - Mounting configuration / lip has changed
 - Eliminated notching on guide rails (slide all the way to the end)
 - Guide is supported in track on head plate
 - Lower profile guide clip
- Compatibility
 - Old guides do work on new frame (can't slide to the end)
 - New guides do not work on old frame or 32V2 frame
- Catalog listed and D-Tools configurable guide rails and clip assemblies for after sale additions!



2200 V2 – Adjustable Guiding

- New modern design
- Much stronger / reliable clamp method
- Less shaft protruding over top of guiding
- Snap on guide mount
- New guide rail with multiple face options
 - Aluminum face
 - 1.3" HDPE
 - 2" HDPE
- **Reduced list price by 5%-7%**
- Catalog listed and D-Tools configurable guide rails and mounting bracket assemblies for after sale additions!

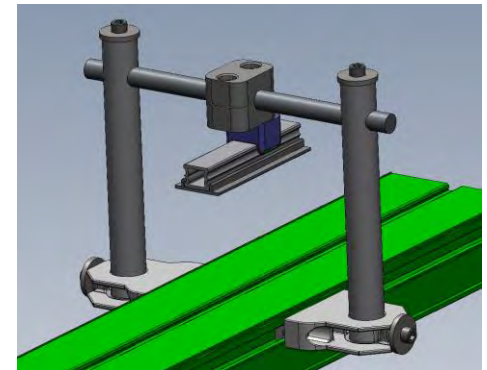
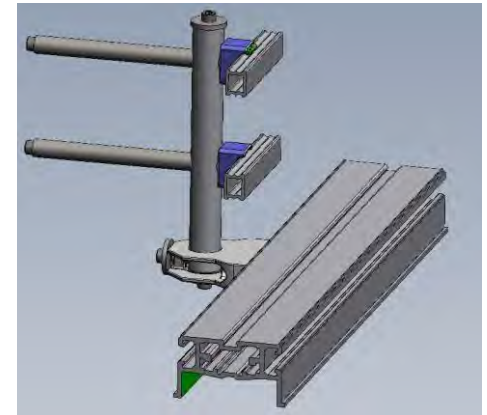


New Adjustable Guiding

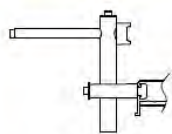


New Guide Accessories

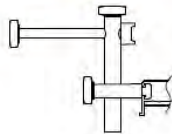
- Guide Mounts Brackets
- Adjustable Guide Rail Extrusions
- Dual & Overhead Guide Mounting Brackets
- Bolt on Guide Clip Assembly
- High Side Guide Rails



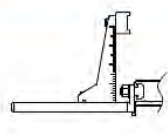
Guide Mount Brackets for Adjustable Profiles



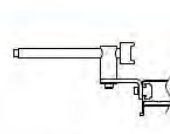
Profile 13



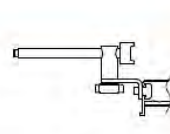
Profile 14



Profile 16



Profile 19



Profile 20

Adjustable Guide Rail Accessories



834-242



834-243



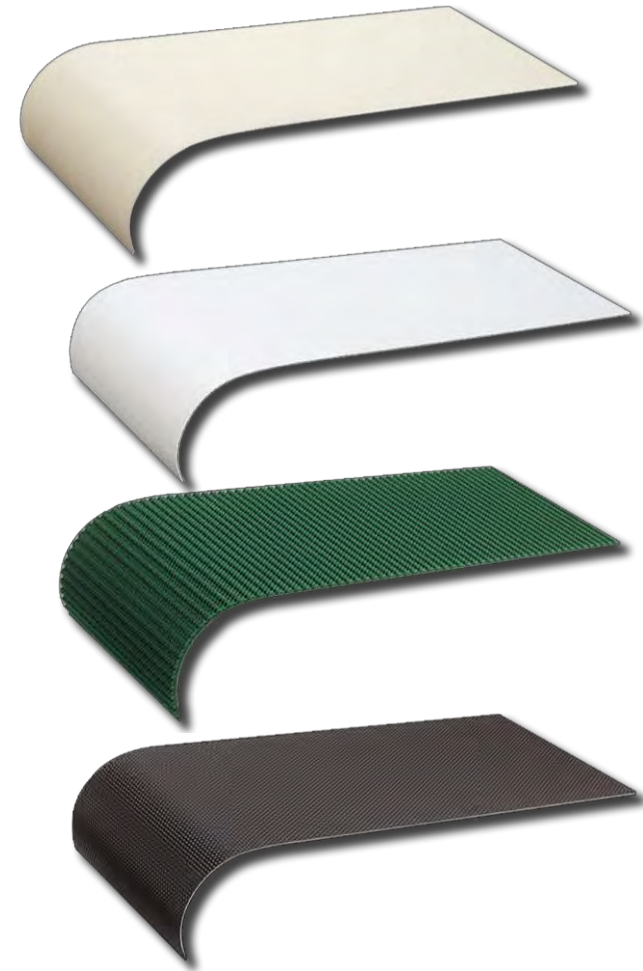
834-244



834-245

2200 V2 New Specialty Belt Options

- 72 - Nose bar
- 73 - Nose bar Low friction
- 75 - Black Urethane
- 76 - Black Nose bar
- 77 - High Friction /Green
- 78 - Chemical, Polyolefin, HF
- 79 - Chemical, Polyolefin, LF
- 80 - High Friction, silicone
- 81 - Low Friction, silicone



2200 V2 – Standard L1 Specials

- **Common Drives – Now configurable without ETO**
- **Backlight***
- **Vacuum***
- **Magnet***
- **Lift Gates**



Gearmotor and Control Consolidation

- Reason for Consolidation:
 - Too many options for customers and stocking (27 different Packages)
 - Confusing offering
 - Missing some options
- Goal
 - Reduce complexity of our electrical offering
 - Drive usage to less part number offering
 - Simpler more complete offering



2200 Series Universal Drive

- **New Transverse Flux Motor Technology**
 - Motor with High Torque at Low Speed
 - Eliminates the Need for a Gearbox
- **One Part Number Covers All Speed, Load, and Mounting Positions**
- **Capable of 5 fpm to 230 fpm**
- **Smaller, lighter, and runs cooler than a Conventional Motor Gearbox Combination**
- **Universal Mounting Package**
 - Capable of Mounting in 21 Different Positions without modifications including Bottom, Top, and Side
- **Faster Assembly Setup with Three Bolt Mounting and Simple Timing Belt Tensioning**



[Past Webinar in the distributor portal](#)

Other Motor Technologies

- DC
 - Historically low cost but high maintenance
 - Movement of product is decreasing
 - Removing from 2200 Series D-Tools
(Still available in other platforms on D-Tools)



Other Motor Technologies

- **AC**
 - Easy to integrate solution
 - Low volume units being removed
 - All others no change
 - New Heavy Load 575 VAC (Canada!)
 - New 2-pole High Speed offering (400 fpm!)
 - New options to be added to other platforms in the near future



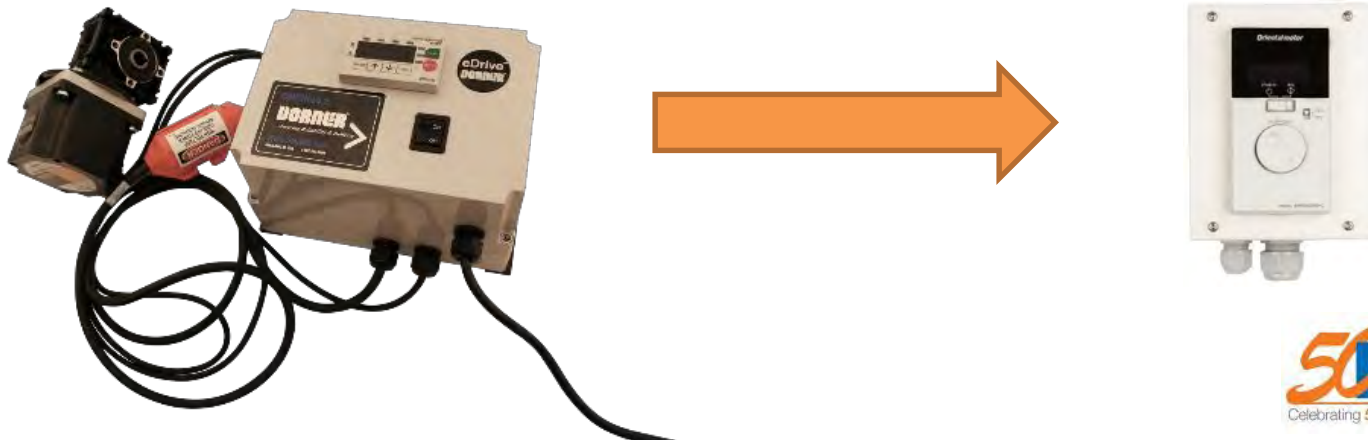
Other Motor Technologies

- VFD Controllers:
 - Removing 75M-V* Motor Controllers
 - Keeping Basic and Full Featured VFD's
 - Adding capability to Full Featured VFD with M12 Accessory Port
 - Eg. 32MV1121(0) -> Optional digit at the end:
 - E: Wired for End Stop I: Wired for Indexing
 - All Existing Control Accessories will work
 - Now standard Dtools questions provide
 - Only a \$95 adder to base VFD (huge price saving)
 - New options to be added to other platforms in the near future



Other Motor Technologies

- **Brushless DC**
 - Replacing current offering
 - **40% Less for Drives!**
 - **Reduced Drive Size!**
 - Same motor size
 - **New options to be added to other platforms in the near future**



2200 V2 iDrive

- Removing flying lead wired option
- Full Control on Conveyor
- Remote Start/Stop



2200 V2 - Summary

- **What's New**
 - **Conveyor**
 - Less support stands
 - Universal T-slot
 - Added belt widths
 - Eliminated guide notches
 - Improved frame strength
 - High speed nosebar tails
 - Standard Common Drive
 - **Belts**
 - New Specialty Belts
 - **Guides**
 - New no modification needed aluminum high side guides
- New guide options
- Reduced price guiding
- Improved adjustable guide design
- **Motors & Controls**
 - Universal Drive – Motor & Mount Package
 - High speed gearmotors
 - 575V gearmotors
 - Low cost VFD with remote capability
 - Reduced cost BLDC controls

Compatibility Matrix - Base conveyor

Element	Legacy 2200	New 2200 V2	Notes
Spindles	X	X	Same part number
Belts	X	X	Same part number
Legacy 2200 Tails	X		
New 2200 V2 Tails		X	
Stand Brackets	X	X	Same part number
Legacy return rollers	X		
New return rollers		X	Different clip only
Gearmotor Mounts	X	X	Same part number
Universal Mount	X	X	
Legacy 04,05,07,09,10	X	X	
New 04,05,07,09,10		X	
Legacy 13,14	X	X	
New 13,14,16 to 50	X	X	

Compatibility Matrix - Accessories

Element	Legacy 2200	New 2200 v2	Notes
Support Stands	X	X	Same part number
New Support Post	X	X	Same part number
Spring nuts	X		
New drop-in nuts		X	
Control Accessories	X	X	Same part number
Cantilever stand mount	X	X	Same part number
Adj Lane Guiding	X	X	Same part number
Side tables	X	X	Same part number
Legacy 90^ Adj Transfer	X		
New 90^ Adj Transfer	X	X	
T-slot cover	X	X	Same part number
Legacy pulley transfer plate	X		
New pulley transfer plate	X	X	
Bottom wiper	X		
Adjustable stop	X	X	Same part number
Legacy end stop	X		
New end stop	X	X	
Legacy flared side guide	X	X	
New flared side guide		X	
Adjustable Height Mount Brackets	X	X	Same part number
Table Top Mount Bracket	X	X	Same part number
Floor mount casters and bracket	X	X	Same part number
New Overhead guide mount assembly	X	X	Same part number
New Dual rail guide mount assembly	X	X	Same part number

Part # Changes

2200 Series Flat Belt End Drive Conveyor

22 E D M W W - L L L L 1 0 A P P P P B B - X T¹ T² T³ T⁴

- Conveyor Tail Options X (if required) *See Drive Shaft Position Chart on next page
 A or B = Drive Shaft (T¹ only) C or D = Drive Shaft (T² only)
 O = No Shaft K = Keyed Auxiliary Shaft
 S = Stub Shaft M = Mag Location (T³ or T⁴ only)

- Belt Type
 - Profile (D side)
 - Profile (A side)
 - Flow/Drive Shaft Position: A, B, C or D
 - Idler Tail Type: 0 = Standard 1.25", 3 = Nose Bar 5/16", 5 = Nose Bar 5/8"
 - V-guide & Mounting Bracket Options:
 1 = Non V-guided belt, conveyor to include mounting brackets 4 = V-guided belt, conveyor not to include mounting brackets
 2 = V-guided belt, conveyor to include mounting brackets 5 = Non V-guided belt, conveyor not to include mounting brackets, with returns
 3 = Non V-guided belt, conveyor not to include mounting brackets 6 = V-guide belt, conveyor not to include mounting brackets, with returns
 - Conveyor Length Reference: L L L L in feet
 - Conveyor Width Reference
 - Documentation Language: M = US, U = Europe

- First 4 digits give more insight
- All part numbers start with 22
- 3rd and 4th digit specify conveyor type
- Profile A & D Side options
- Additional Conveyor Tail Call-out options

Part # Change- Tail Options & Shaft Positions

- Gives you the ability to specify the drive shaft position and other shaft options
- Easily identify each shaft position by looking at the part number

2200 Series Flat Belt End Drive Conveyor

22 E D M W W - L L L L 1 0 A P P P P B B - X T¹ T² T³ T⁴

Conveyor Tail Options X (if required) *See Drive Shaft Position Chart on next page

A or B = Drive Shaft (T¹ only) C or D = Drive Shaft (T² only)

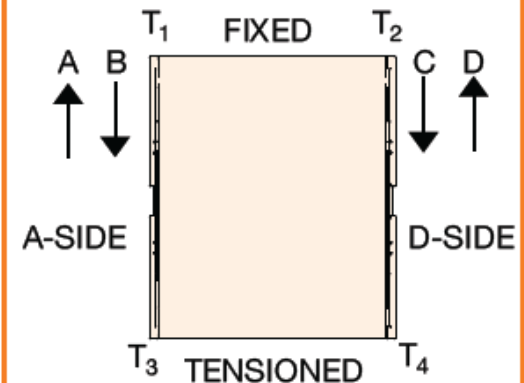
O = No Shaft

K = Keyed Auxiliary Shaft

S = Stub Shaft

M = Mag Location (T³ or T⁴ only)

DRIVE SHAFT POSITION



Since belts are being pulled, positions A & D are preferred. Pushing belts (B & C) reduce conveyor load capacity by approximately 66%.

The Dorner Value

Dependable, Quality Product

- Stronger frame reduces required stands, reducing costs and opening up floor space
- Sleek frame design with universal T-Slot allows for fast and simple attachment of accessories and guiding with a variety of industry available hardware
- Universal Drive reduces number of stocked parts and simplifies the ordering process
- High Speed Nose Bar with V-Guide belting, safely transfers small parts at speeds up to 200 ft/min
- Industry Best V-Guiding provides positive belt tracking, even under demanding side load applications
- Precise rack and pinion belt tensioning allows for fast and simple tensioning
- Sealed for life bearings reduces maintenance

The Dorner Value

Complete Offering

- Dorner's full line of standard and custom products provides you with a single source for conveyor systems
- Our in House belting capabilities provide a large variety of quality belts, delivered fast.

Fast

- Using DTools you can engineer simple or complex conveyors to meet your needs in minutes
- The industry leading tool delivers a complete 3D CAD assembly model for instant validation of fit
- Dorner provides the industry's fastest lead times with 2200 series conveyors shipping in as little as 3 business days

Timeline

- **2200 Belted Conveyors**
 - Full Production Launch
 - Production - April 2016
 - Full Catalogs / DTools / DCAD / Tech Pub / Website
- **Upcoming:**
 - NEW!** – 2200 Belted LPZ Conveyors – Early June
 - 2200 Modular Belt Conveyors – Late June
 - 2200 Precision Move Conveyors - August

Effect on Legacy 2200/2300 Platform

- Legacy 2200 quotes will be honored thru May 2016
- Legacy 2200/2300 conveyors can be ordered after May for 1 year (April 2017)
 - With a 30% price adder with a much longer lead time
- Legacy 2200 DTools access will be turned off
- 2300 Style product will be discontinued



Marketing

- **Manual & Brochure**
 - Available on the Website
 - Printed Copies are being drop shipped in the next few weeks
 - **Note: The manual and brochure includes information on upcoming product releases. Please refer to old manuals until launch.**
- **Service Manuals – Updated and Live on Website**
- **Website - Updated**
- **Video - Online**
- **Pictures – Available on Flickr**
- **Demos – Available in Distributor Portal**
 - Universal Drive Demo Conveyor
 - 2200 V2 Demo Conveyor

New Product Information – Distributor Portal

DORNER The Leader in Precision Conveyors.
MOVE FAST. MOVE SMART.

PRODUCTS ENGINEERED SOLUTIONS PARTS & SERVICES MANUALS & LITERATURE **DISTRIBUTORS**

Home Distributors Distributor Portal New Product Information Packets

CUSTOMER CARE 800.397.8664 APPLICATIONS HOTLINE 800.351.8712 ONLINE CHAT SUPPORT Click for help

NEW PRODUCT INFORMATION PACKETS

Below you will find links to New Product pages.

These pages were developed to provide you with single source location for useful information regarding Dorners new product information.

If you have any questions or need additional information about any of our products please let us know.

- [3200 Series Modular Belt Conveyors](#)
- [3200 Series Belted & Precision Move V2 Conveyors](#)

Home | About Dornier | Contact Us | Distributors | Tradeshov Industries | Applications | Conveyor Types | Standard Products | Custom Products
©2014 Dornier Mfg. Corp. - Hartland, WI, USA - USA 800.397.8664 -

DORNER The Leader in Precision Conveyors.
MOVE FAST. MOVE SMART.

CONTACT A LOCAL DISTRIBUTOR

TYPE YOUR SEARCH HERE


PRODUCTS ENGINEERED SOLUTIONS PARTS & SERVICES MANUALS & LITERATURE **DISTRIBUTORS** INDUSTRIES NEWS & BLOG ABOUT CONTACT

Home Distributors Distributor Portal New Product Information Packets Next Generation 3200 Series Belted Conveyor

CUSTOMER CARE 800.397.8664 APPLICATIONS HOTLINE 800.351.8712 ONLINE CHAT SUPPORT Click for help DTools CAD/CONFIGURATOR Click to create your own model

NEXT GENERATION 3200 SERIES BELTED CONVEYOR

This January 2015 we released the second portion of our Next Generation 3200 Series Belted Conveyors, the 3200 Series Flat Belt Conveyors and the 3200 Series Precision Move Conveyors. The 3200 Modular Belt Conveyor was launched in June.



The Next Generation 3200 Series Belted Conveyors not only includes many of the features from the original line but new designs to enhance its functionality and performance.

The decision to merge the 2 product lines was made to help streamline processes internally, reduce costs to the consumer, as well as simplify the products lines.

PORTAL LINKS

- [Resources](#)
- [Training](#)
- [Literature](#)
- [New Product Information](#)

Below is a variety of information that should help you understand the transition, promote, and quote the product.

If you have any questions please let us know:

IMPROVEMENTS MARKETING WEBINAR D-TOOLS QUESTIONS

Legacy 3200 vs 3200 Series Belted V2- Product Improvements

Flat side tail design for ease of machine interface
Added Rib Top belt option

QUESTIONS

