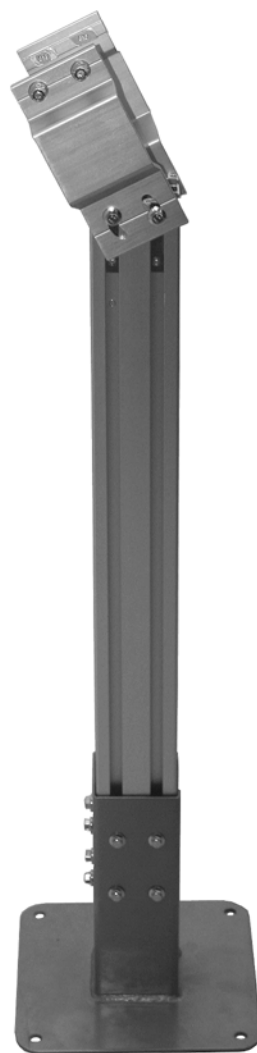




# Support Post

## Installation, Maintenance & Parts Manual



DORNER MFG. CORP.  
P.O. Box 20 • 975 Cottonwood Ave.  
Hartland, WI 53029-0020 USA

INSIDE THE USA  
TEL: 1-800-397-8664  
FAX: 1-800-369-2440

OUTSIDE THE USA  
TEL: 262-367-7600  
FAX: 262-367-5827

For other service manuals visit our website at:  
[www.dorner.com/service\\_manuals.asp](http://www.dorner.com/service_manuals.asp)

---

# Table of Contents

---

|                                             |   |                                                         |    |
|---------------------------------------------|---|---------------------------------------------------------|----|
| Introduction .....                          | 2 | Attach Dual Side Support Post to 180° Curve Frame ..... | 7  |
| Warnings - General Safety .....             | 3 | Preventive Maintenance and Adjustment .....             | 8  |
| Product Description .....                   | 4 | Support Post Height Adjustment .....                    | 8  |
| Specifications .....                        | 5 | Required Tools .....                                    | 8  |
| Support Post .....                          | 5 | Conveyor Angle Adjustment .....                         | 9  |
| SmartFlex Support Post .....                | 5 | Required Tools .....                                    | 9  |
| 3200 Support Post .....                     | 5 | Service Parts .....                                     | 10 |
| Installation .....                          | 6 | 3200 Support Post .....                                 | 10 |
| Required Tools .....                        | 6 | SmartFlex Support Post - Conveyor Frame Mount .....     | 11 |
| Recommended Installation Sequence .....     | 6 | SmartFlex Support Post - Motor Mount .....              | 12 |
| Attach Support Post to Conveyor Frame ..... | 7 | SmartFlex Dual Side Support Post .....                  | 13 |
| Attach Support Post to Motor .....          | 7 | Return Policy .....                                     | 14 |

---

## Introduction

---

|                                                                                             |
|---------------------------------------------------------------------------------------------|
| <b>IMPORTANT</b>                                                                            |
| <i>Some illustrations may show guards removed. DO NOT operate equipment without guards.</i> |

Upon receipt of shipment:

- Compare shipment with packing slip. Contact factory regarding discrepancies.
- Inspect packages for shipping damage. Contact carrier regarding damage.
- Accessories may be shipped loose. See accessory instructions for installation.

Dorner’s Limited Warranty applies.

Dorner reserves the right to make changes at any time without notice or obligation.

## Warnings - General Safety

### WARNING

The safety alert symbol, black triangle with white exclamation, is used to alert you to potential personal injury hazards.

### DANGER



Climbing, sitting, walking or riding on conveyor will cause severe injury.  
**KEEP OFF CONVEYORS.**

### DANGER



**DO NOT OPERATE CONVEYORS IN AN EXPLOSIVE ENVIRONMENT.**

### DANGER



Supports marked with this symbol must be anchored to the floor. Supports not anchored to floor will tip, causing severe injury or death.  
**SUPPORT MUST BE ANCHORED TO FLOOR.**

### WARNING



Exposed moving parts can cause severe injury.  
**LOCK OUT POWER** before removing guards or performing maintenance.

### WARNING



Loosening stand height or angle adjustment screws may cause conveyor sections to drop down, causing severe injury.

**SUPPORT CONVEYOR SECTIONS PRIOR TO LOOSENING STAND HEIGHT OR ANGLE ADJUSTMENT SCREWS.**

### WARNING



Dorner cannot control the physical installation and application of conveyors. Taking protective measures is the responsibility of the user.

When conveyors are used in conjunction with other equipment or as part of a multiple conveyor system, **CHECK FOR POTENTIAL PINCH POINTS** and other mechanical hazards before system start-up.

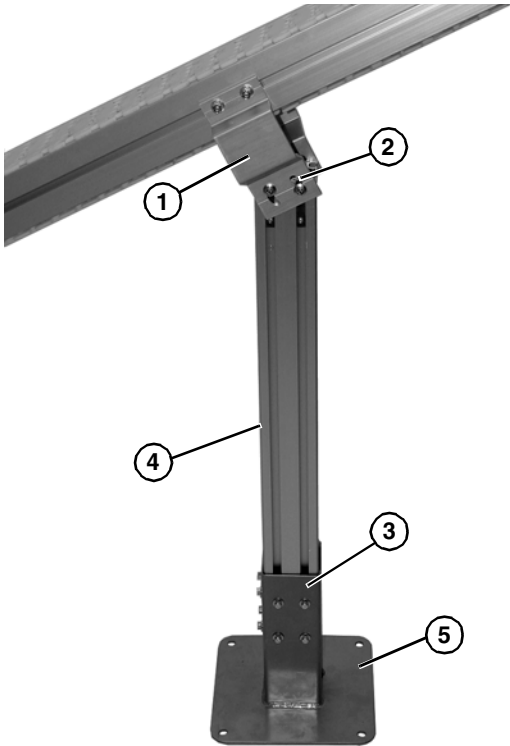
---

# Product Description

---

Refer to **Figure 1** for typical stand components.

- |   |                         |
|---|-------------------------|
| 1 | Support Stand Bracket   |
| 2 | Angle Adjustment Point  |
| 3 | Height Adjustment Point |
| 4 | Leg Assembly            |
| 5 | Stand Foot              |

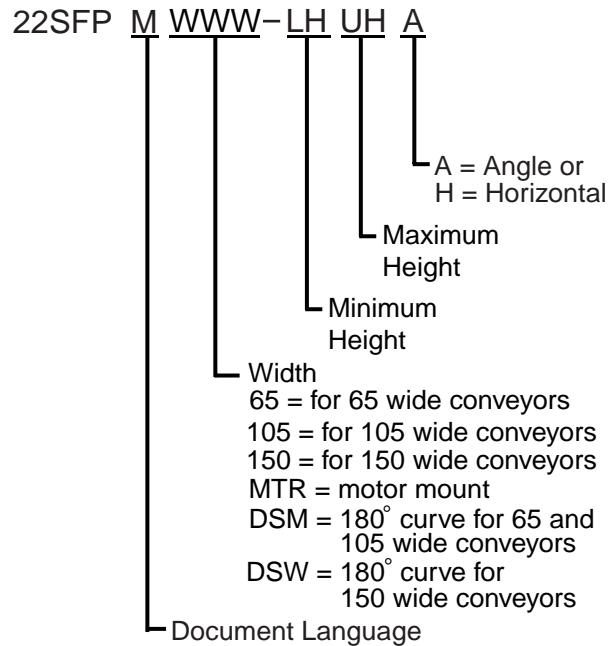


**Figure 1**

# Specifications

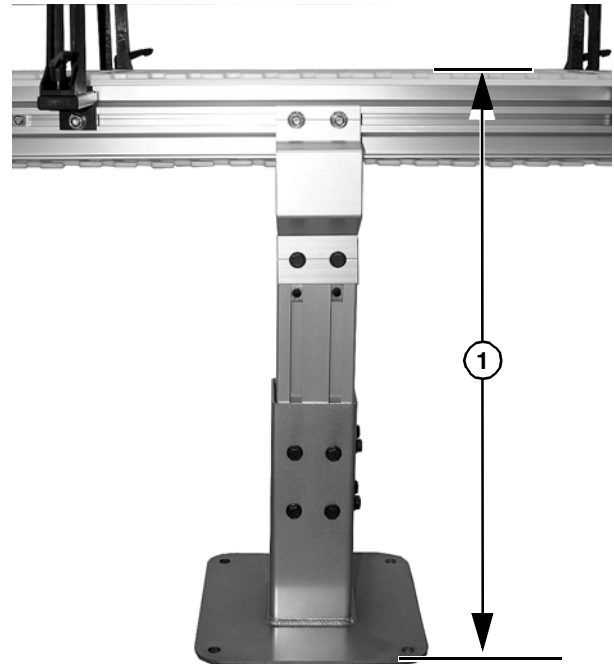
## Support Post

### SmartFlex Support Post



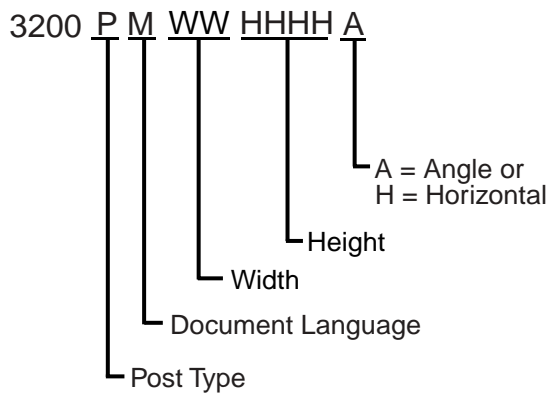
Example: 22SFPM105-2428H

SmartFlex Support post for 4" (105 mm) wide conveyor and a height range of 24" (609 mm) to 28" (711 mm) (**Figure 2, item 1**) mounted horizontal.



**Figure 2**

### 3200 Support Post



# Installation

## DANGER



Supports marked with this symbol must be anchored to the floor. Supports not anchored to floor will tip, causing severe injury or death.

**SUPPORT MUST BE ANCHORED TO FLOOR.**

## WARNING

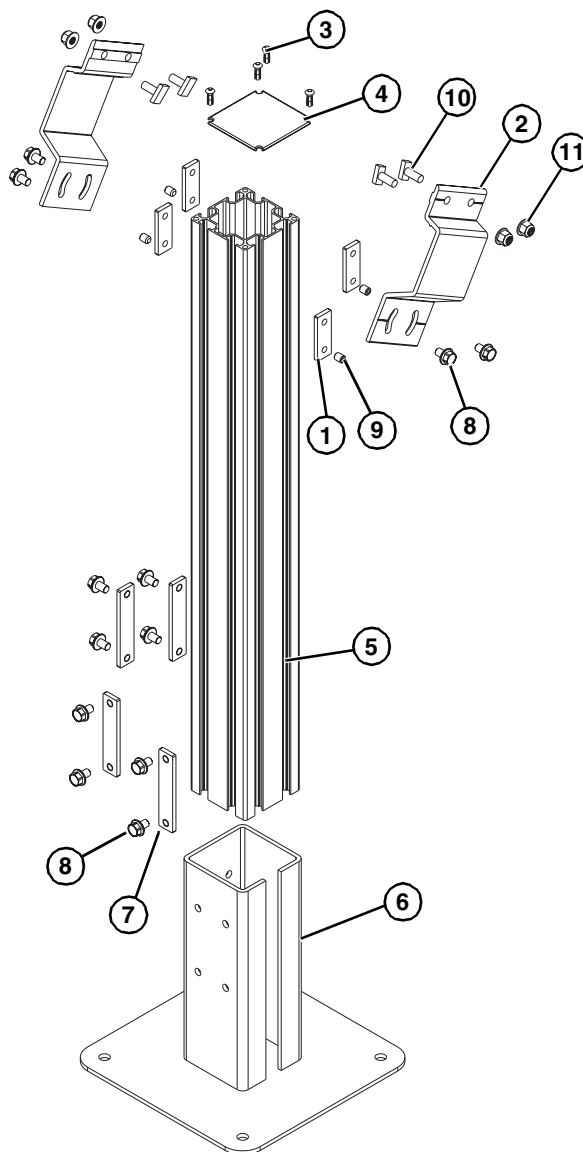


Exposed moving parts can cause severe injury.

**LOCK OUT POWER** before removing guards or performing maintenance.

Typical components (**Figure 3**).

- |    |                                    |
|----|------------------------------------|
| 1  | Nut Bar, M8 x 35 mm                |
| 2  | Mounting Bracket                   |
| 3  | Nylon Rivet                        |
| 4  | Tube Cover                         |
| 5  | Post Extrusion                     |
| 6  | Stand Foot                         |
| 7  | Nut Bar, M8 x 80 mm                |
| 8  | Socket Head Screw, M6-1.00 x 16 mm |
| 9  | Cup Set Screw, M8-1.25 x 10 mm     |
| 10 | Stud, M8 x 20 mm                   |
| 11 | Hex Nut, M8-1.25                   |



**Figure 3**

## Required Tools

- 5 mm Hex Key Wrench
- 13 mm wrench

## Recommended Installation Sequence

(See Table of Contents for page numbers.)

- Locate and arrange stands
- Attach support post to conveyor frame
- Attach support post to motor
- Attach dual side support post to 180° curve frame

## Attach Support Post to Conveyor Frame

1. Insert studs (Figure 4, item 1) into conveyor side slots (Figure 4, item 2).

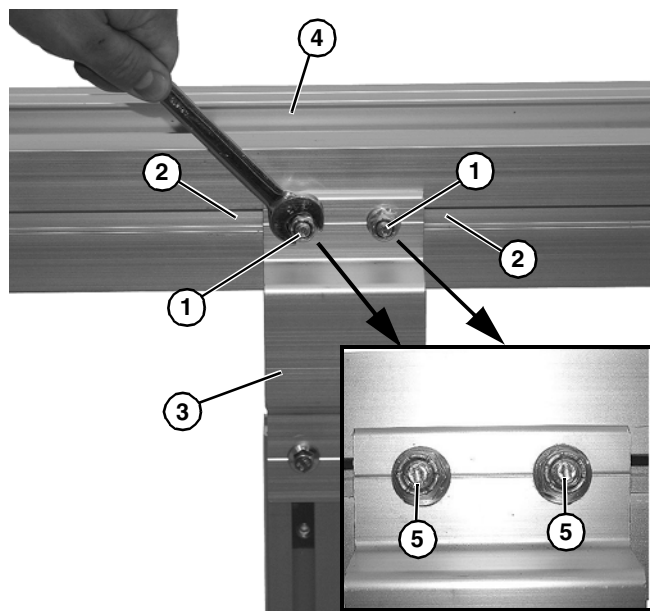


Figure 4

2. Install support post mounting bracket (Figure 4, item 3) onto two studs (Figure 4, item 1) installed on conveyor frame (Figure 4, item 4) with two nuts.

### NOTE

*Be certain that slot (Figure 4, item 5) is close to vertical when finished tightening nut.*

## Attach Support Post to Motor

1. Install gearmotor mount (Figure 5, item 1) onto motor (Figure 5, item 2) with four socket head screws (Figure 5, item 3).

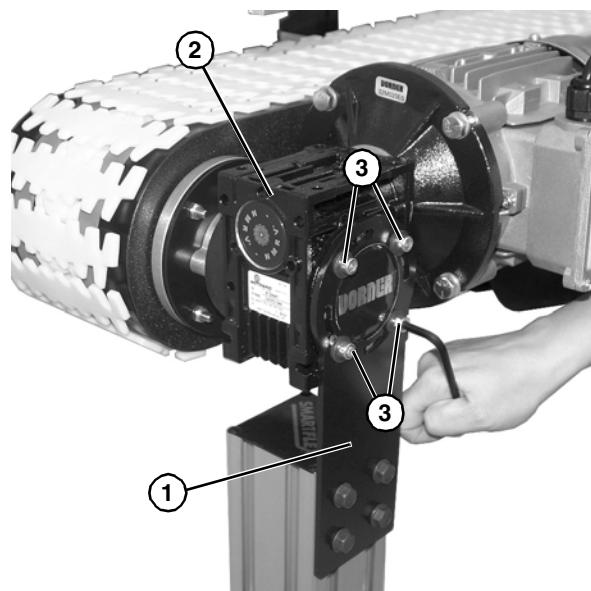


Figure 5

## Attach Dual Side Support Post to 180° Curve Frame

1. Install 180° curve mount (Figure 6, item 1) onto 180° curve (Figure 6, item 2) with four socket head screws (Figure 6, item 3) and nuts.

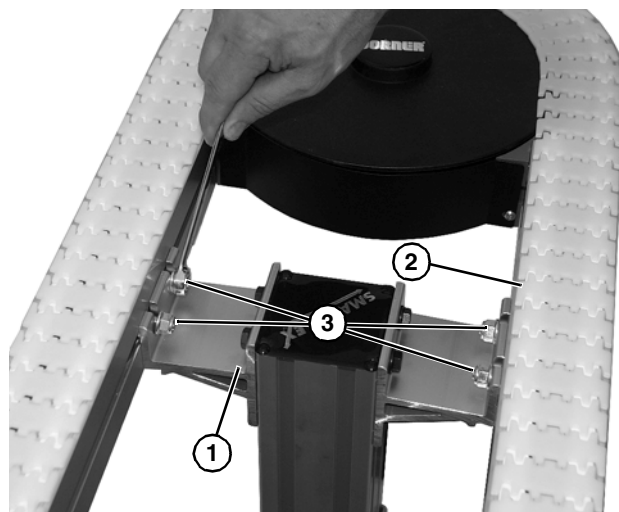


Figure 6

### NOTE

*Be certain that slots on end of bolts (Figure 6, item 3) is close to vertical when finished tightening nut.*

# Preventive Maintenance and Adjustment

## Support Post Height Adjustment

### Required Tools

- 13 mm Wrench

#### ⚠ WARNING



Exposed moving parts can cause severe injury.  
**LOCK OUT POWER** before removing guards or performing maintenance.

#### ⚠ WARNING



Loosening stand height or angle adjustment screws may cause conveyor sections to drop down, causing severe injury.

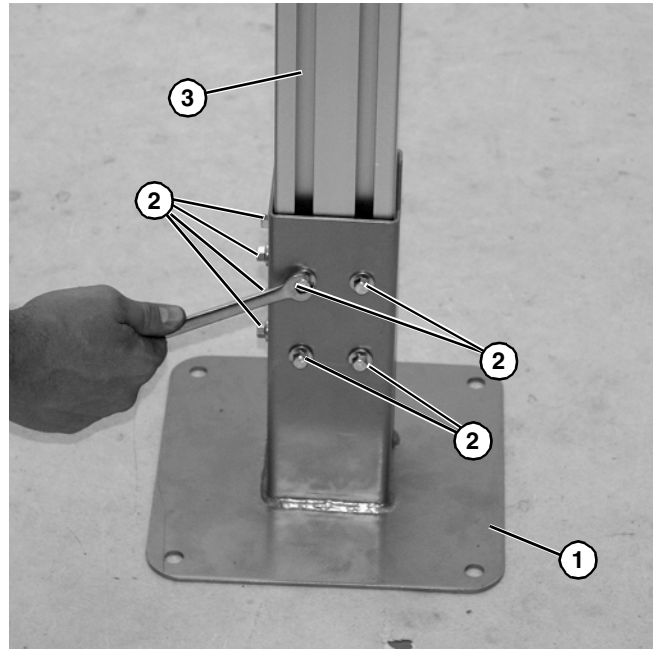
**SUPPORT CONVEYOR SECTIONS PRIOR TO LOOSENING STAND HEIGHT OR ANGLE ADJUSTMENT SCREWS.**

1. Support conveyor section.
2. To adjust stand foot (**Figure 7, item 1**), loosen eight socket head screws (**Figure 7, item 2**) and adjust stand legs (**Figure 7, item 3**) up or down to the required height. If necessary, adjust height of each leg support until conveyor is level from side to side.

#### ⚠ WARNING



Failure to secure screws (**Figure 7, item 2**) may cause conveyor sections to drop down causing severe injury.  
**TIGHTEN SCREWS (Figure 7, item 2) AFTER ADJUSTMENT.**



**Figure 7**

3. Tighten four flange socket head screws (**Figure 7, item 2**) to 24 ft-lb (33 N-m).




# Preventive Maintenance and Adjustment

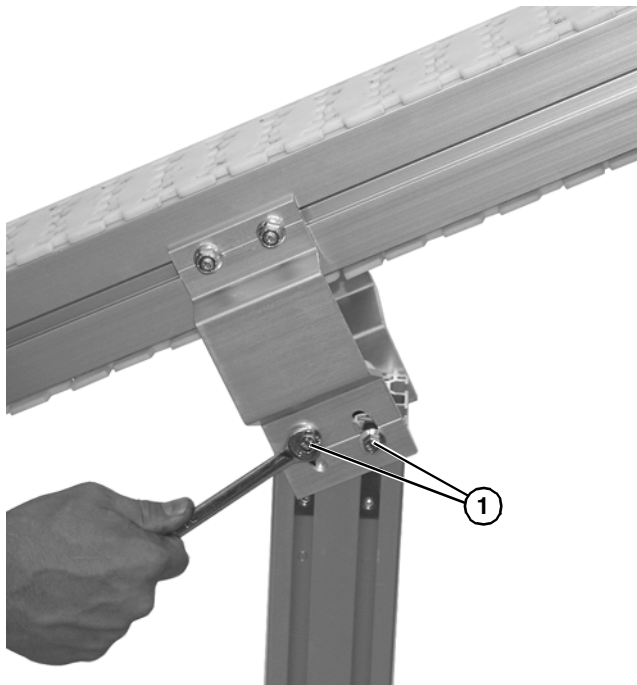
## Conveyor Angle Adjustment

### Required Tools

- 13 mm Wrench


| <b>⚠ WARNING</b>                                                                                                                                                                                                              |
|-------------------------------------------------------------------------------------------------------------------------------------------------------------------------------------------------------------------------------|
|                                                                                                                                              |
| <p>Loosening stand height or angle adjustment screws may cause conveyor sections to drop down, causing severe injury.</p> <p><b>SUPPORT CONVEYOR SECTIONS PRIOR TO LOOSENING STAND HEIGHT OR ANGLE ADJUSTMENT SCREWS.</b></p> |

1. Loosen two flange socket head screws (**Figure 8, item 1**) on both sides of stand.



**Figure 8**

2. Adjust conveyor to desired angle.

| <b>⚠ WARNING</b>                                                                                                                                                                             |
|----------------------------------------------------------------------------------------------------------------------------------------------------------------------------------------------|
|                                                                                                           |
| <p>Failure to secure screws (<b>Figure 8, item 1</b>) may cause conveyor sections to drop down, causing severe injury.</p> <p><b>TIGHTEN SCREWS (Figure 8, item 1) AFTER ADJUSTMENT.</b></p> |

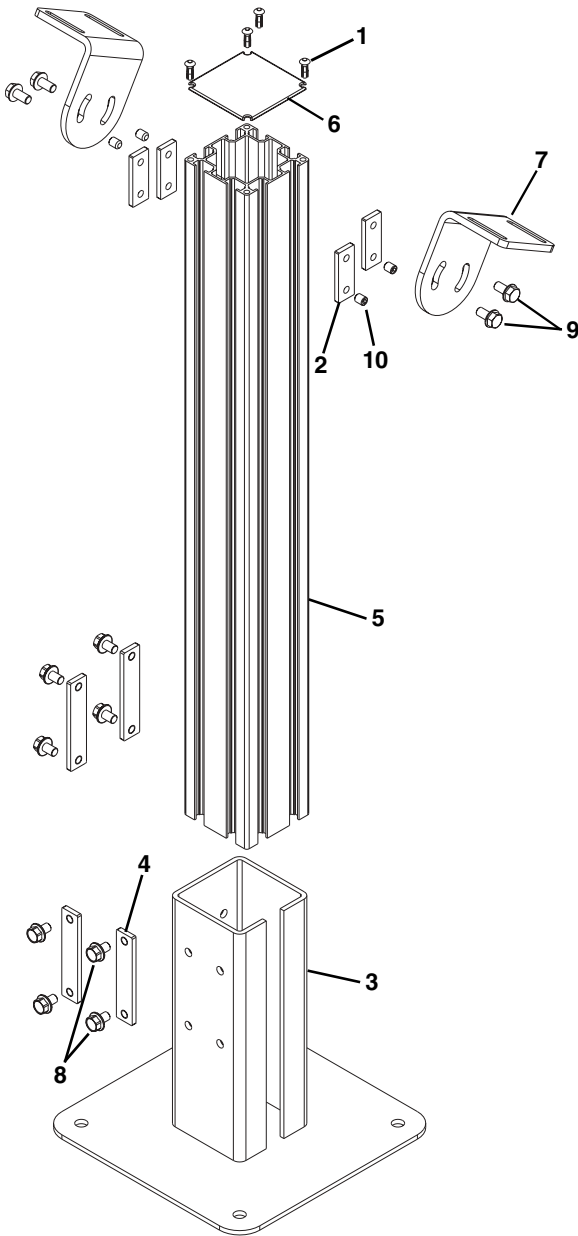
3. Secure flange socket screws (**Figure 8, item 1**) to 24 ft-lb (18 Nm).

# Service Parts

## NOTE

For replacement parts other than those shown on this page, contact an authorized Dorner Service Center or the factory.

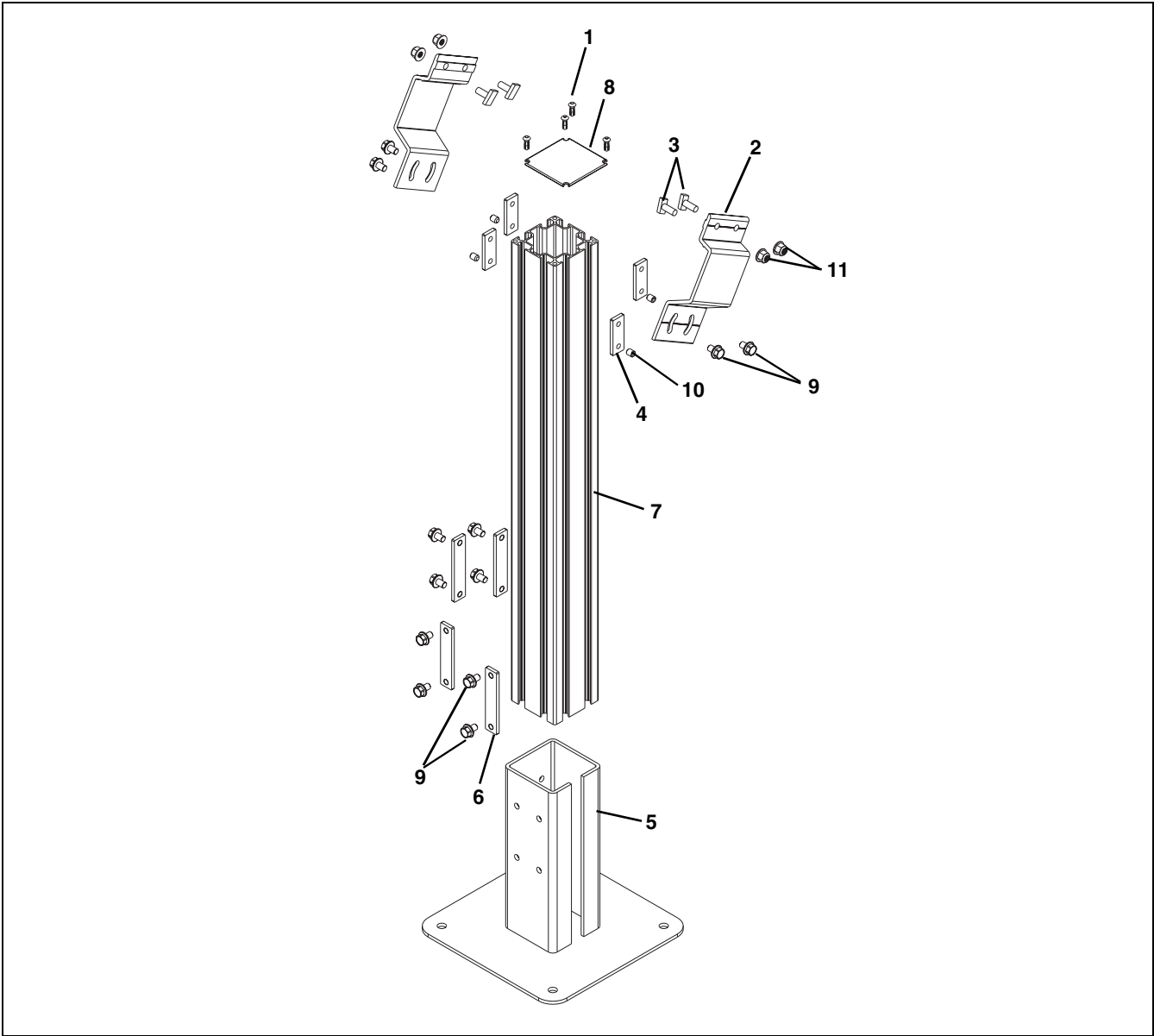
### 3200 Support Post



| Item | Part Number  | Description         |
|------|--------------|---------------------|
| 1    | 807-2273     | Rivet               |
| 2    | 834-009      | Nut Bar, M8 x 35 mm |
| 3    | 834-013      | Stand Foot          |
| 4    | 834-017      | Nut Bar, M8 x 80 mm |
| 5    | 203164-LLLLL | Post Extrusion      |
| 6    | 203165       | Tube Cover          |
| 7    | 350594       | Horizontal Bracket  |
|      | 350595       | Angled Bracket      |

| Item                                            | Part Number | Description                             |
|-------------------------------------------------|-------------|-----------------------------------------|
| 8                                               | 960882M     | Flange Head Cap Screw, M 8-1.25 x 12 mm |
| 9                                               | 960883M     | Flange Head Cap Screw, M8-1.25 x 16 mm  |
| 10                                              | 970810M     | Cup Set Screw, M8-1.25 x 10 mm          |
| LLLLL = Length in inches with 2 decimal places. |             |                                         |
| Length Example: Length = 35.25" LLLLL = 03525   |             |                                         |

SmartFlex Support Post - Conveyor Frame Mount

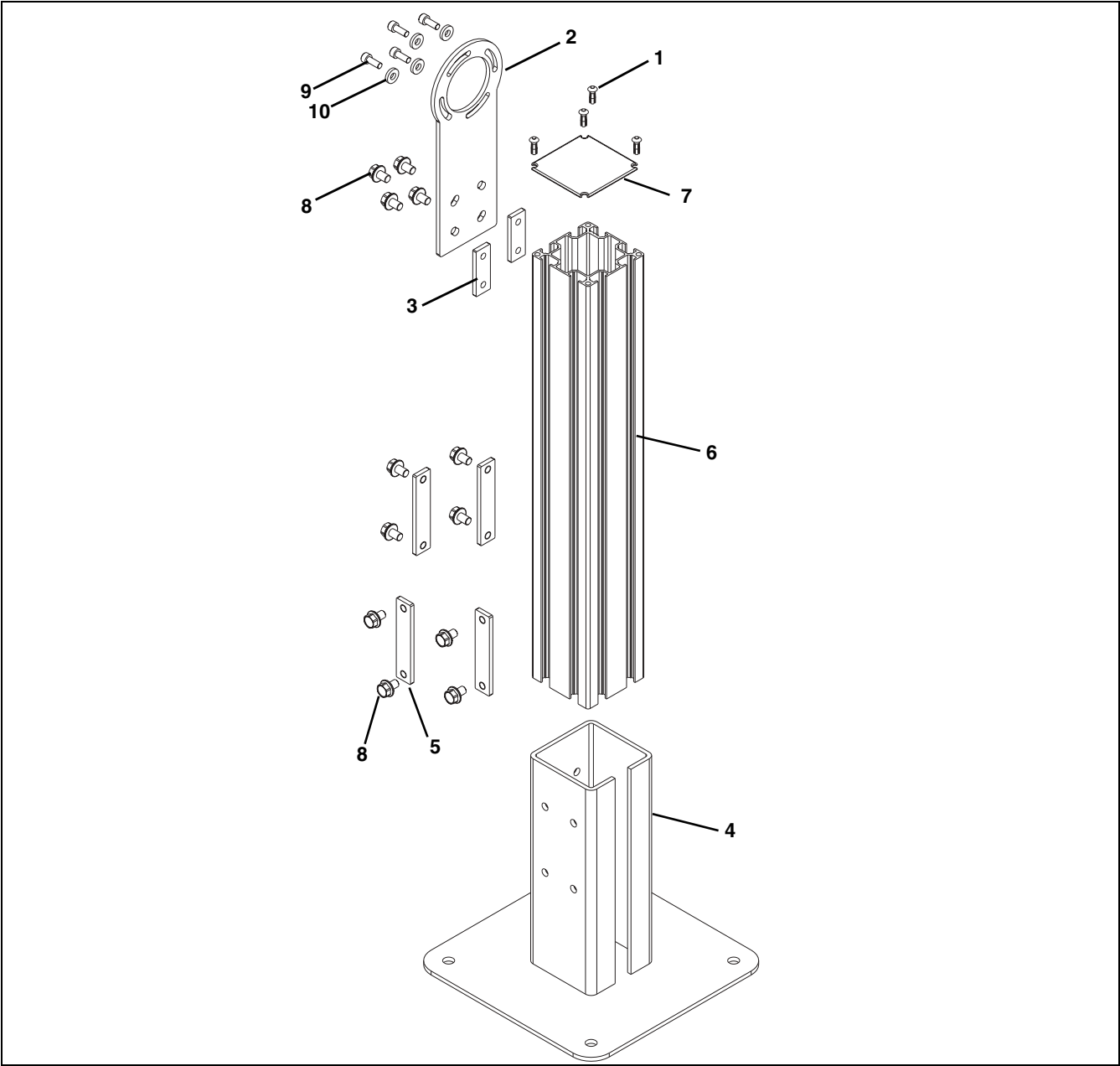


| Item | Part Number          | Description                                               |
|------|----------------------|-----------------------------------------------------------|
| 1    | 807-2273             | Nylon Rivet                                               |
| 2    | 834-002              | Mounting Bracket for 065 Width Horizontal Mount Conveyors |
|      | 834-004              | Mounting Bracket for 105 Width Horizontal Mount Conveyors |
|      | 834-006              | Mounting Bracket for 150 Width Horizontal Mount Conveyors |
|      | 210830- <u>WWW</u>   | Mounting Bracket for Angle Mount Conveyors                |
| 3    | 834-007              | Stud, M8 x 20 mm                                          |
| 4    | 834-009              | Nut Bar, M8 x 35 mm                                       |
| 5    | 834-013              | Stand Foot                                                |
| 6    | 834-017              | Nut Bar, M8 x 80 mm                                       |
| 7    | 203164- <u>LLLLL</u> | Post Extrusion                                            |
| 8    | 203165               | Tube Cover                                                |
| 9    | 960882M              | Flange Head Cap Screw, M8-1.25 x 12 mm                    |

| Item                                                   | Part Number | Description                    |
|--------------------------------------------------------|-------------|--------------------------------|
| 10                                                     | 970810M     | Cup Set Screw, M8-1.25 x 10 mm |
| 11                                                     | 990812M     | Hex Nut, M8-1.25               |
| <u>WWW</u> = Conveyor width reference: 065, 105, 150   |             |                                |
| <u>LLLLL</u> = Length in inches with 2 decimal places. |             |                                |
| Length Example: Length = 95.25" <u>LLLLL</u> = 09525   |             |                                |

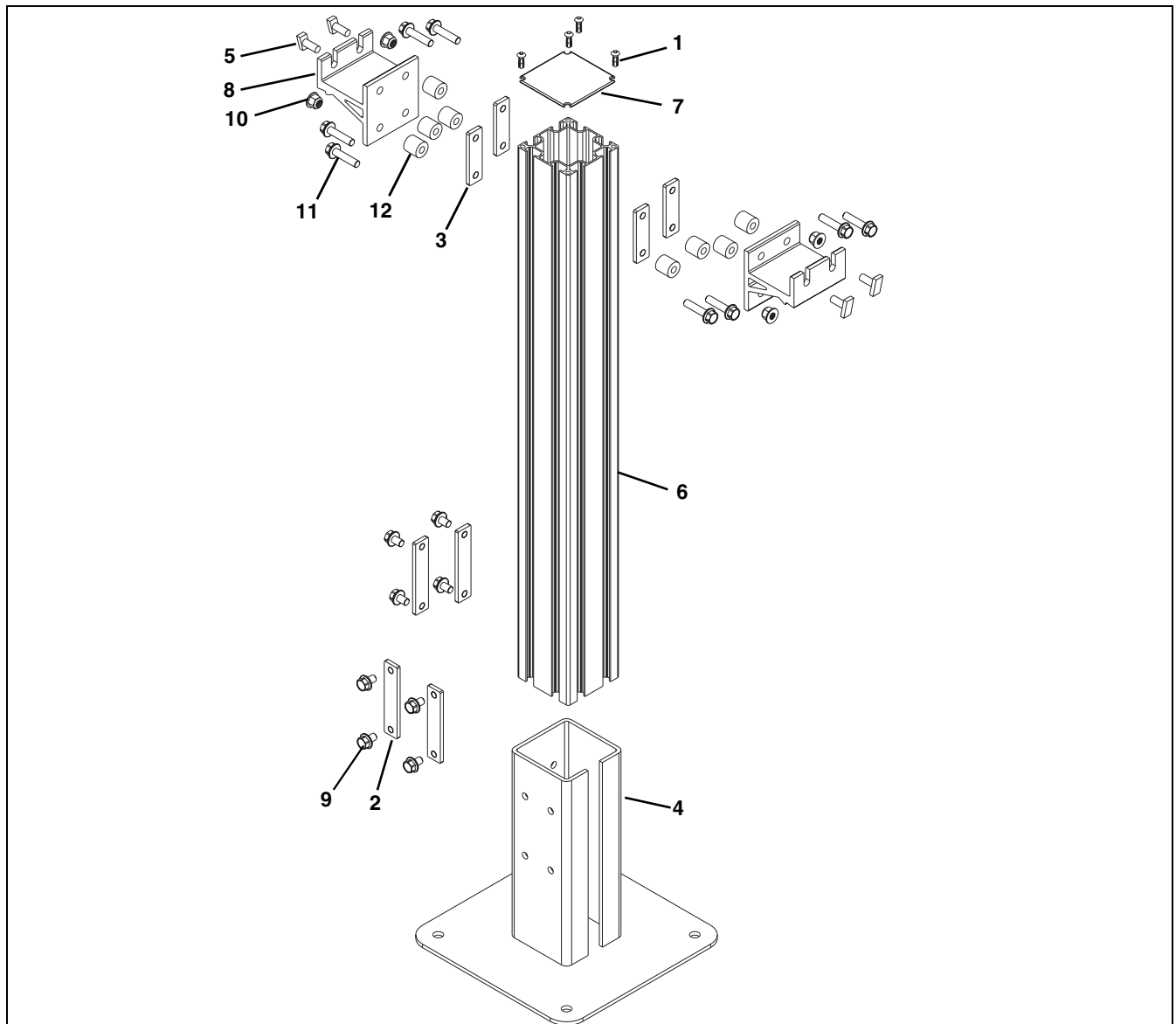
# Service Parts

## SmartFlex Support Post - Motor Mount



| Item                                                  | Part Number         | Description                               |
|-------------------------------------------------------|---------------------|-------------------------------------------|
| 1                                                     | 807-2273            | Nylon Rivet                               |
| 2                                                     | 203163              | Gearmotor Mount                           |
| 3                                                     | 834-009             | Nut Bar, M8 x 35 mm                       |
| 4                                                     | 834-013             | Stand Foot                                |
| 5                                                     | 834-017             | Nut Bar, M8 x 80 mm                       |
| 6                                                     | 203164- <u>LLLL</u> | Post Extrusion                            |
| 7                                                     | 203165              | Tube Cover                                |
| 8                                                     | 960882M             | Flange Head Cap Screw,<br>M8-1.25 x 12 mm |
| 9                                                     | 920616M             | Socket Head Screw,<br>M6-1.00 x 16 mm     |
| 10                                                    | 605279P             | Washer                                    |
| <u>LLLL</u> = Length in inches with 2 decimal places. |                     |                                           |
| Length Example: Length = 95.25" <u>LLLL</u> = 09525   |                     |                                           |

## SmartFlex Dual Side Support Post



| Item                                            | Part Number  | Description                                                                |
|-------------------------------------------------|--------------|----------------------------------------------------------------------------|
| 1                                               | 807-2273     | Nylon Rivet                                                                |
| 2                                               | 834-017      | Nut Bar, M8 x 80 mm                                                        |
| 3                                               | 203067       | Nut Bar, M8 x 50 mm                                                        |
| 4                                               | 834-013      | Stand Foot                                                                 |
| 5                                               | 807-007      | Stud, M8 x 20 mm                                                           |
| 6                                               | 203164-LLLLL | Post Extrusion                                                             |
| 7                                               | 203165       | Tube Cover                                                                 |
| 8                                               | 834-016      | Side Mounting Bracket                                                      |
| 9                                               | 960882M      | Flange Head Cap Screw, M8-1.25 x 12 mm                                     |
| 10                                              | 990812M      | Hex Nut                                                                    |
| 11                                              | 960882M      | Flange Head Cap Screw, M8-1.25 x 12 mm (for 65 & 105 width conveyors only) |
|                                                 | 960887M      | Flange Head Cap Screw, M8-1.25 x 35 mm (for 150 width conveyors)           |
| 12                                              | 807-2296     | Spacer (for 150 width conveyors only)                                      |
| LLLLL = Length in inches with 2 decimal places. |              |                                                                            |
| Length Example: Length = 95.25" LLLLL = 09525   |              |                                                                            |

# Return Policy

Returns must have prior written factory authorization or they will not be accepted. Items that are returned to Dorner without authorization will not be credited nor returned to the original sender. When calling for authorization, please have the following information ready for the Dorner factory representative or your local distributor:

1. Name and address of customer.
2. Dorner part number(s) of item(s) being returned.
3. Reason for return.
4. Customer's original order number used when ordering the item(s).
5. Dorner or distributor invoice number (if available, part serial number).

A representative will discuss action to be taken on the returned items and provide a Returned Goods Authorization (RMA) number for reference. RMA will automatically close 30 days after being issued. To get credit, items must be new and undamaged. There will be a return charge on all items returned for credit, where Dorner was not at fault. It is the customer's responsibility to prevent damage during return shipping. Damaged or modified items will not be accepted. The customer is responsible for return freight.

|                     | Product Type                                                                                                               |                                |                |             |                        |                                    |                                          |                             |                           |
|---------------------|----------------------------------------------------------------------------------------------------------------------------|--------------------------------|----------------|-------------|------------------------|------------------------------------|------------------------------------------|-----------------------------|---------------------------|
|                     | Standard Products                                                                                                          |                                |                |             |                        |                                    |                                          |                             | Engineered to order parts |
| Product Line        | Conveyors                                                                                                                  | Gearmotors & Mounting Packages | Support Stands | Accessories | Spare Parts (non-belt) | Spare Belts - Standard Flat Fabric | Spare Belts - Cleated & Specialty Fabric | Spare Belts - Plastic Chain | All equipment and parts   |
| 1100                | 30% return fee for all products except:<br>50% return fee for conveyors with modular belt, cleated belt or specialty belts |                                |                |             |                        |                                    | non-returnable                           |                             | case-by-case              |
| 2200                |                                                                                                                            |                                |                |             |                        |                                    |                                          |                             |                           |
| 2200 Modular Belt   |                                                                                                                            |                                |                |             |                        |                                    |                                          |                             |                           |
| 2200 Precision Move |                                                                                                                            |                                |                |             |                        |                                    |                                          |                             |                           |
| 2300                |                                                                                                                            |                                |                |             |                        |                                    |                                          |                             |                           |
| 2300 Modular Belt   |                                                                                                                            |                                |                |             |                        |                                    |                                          |                             |                           |
| 3200                |                                                                                                                            |                                |                |             |                        |                                    |                                          |                             |                           |
| 3200 LPZ            |                                                                                                                            |                                |                |             |                        |                                    |                                          |                             |                           |
| 3200 Precision Move |                                                                                                                            |                                |                |             |                        |                                    |                                          |                             |                           |
| 4100                |                                                                                                                            |                                |                |             |                        |                                    |                                          |                             |                           |
| 5200                |                                                                                                                            |                                |                |             |                        |                                    |                                          |                             |                           |
| 5300                |                                                                                                                            |                                |                |             |                        |                                    |                                          |                             |                           |
| 6200                |                                                                                                                            |                                |                |             |                        |                                    |                                          |                             |                           |
| Controls            |                                                                                                                            |                                |                |             |                        |                                    |                                          |                             |                           |
| 7200 / 7300         | 50% return fee for all products                                                                                            |                                |                |             |                        |                                    |                                          |                             |                           |
| 7350                | non-returnable                                                                                                             |                                |                |             |                        |                                    |                                          |                             |                           |
| 7360                |                                                                                                                            |                                |                |             |                        |                                    |                                          |                             |                           |
| 7400                |                                                                                                                            |                                |                |             |                        |                                    |                                          |                             |                           |
| 7600                |                                                                                                                            |                                |                |             |                        |                                    |                                          |                             |                           |

Returns will not be accepted after 60 days from original invoice date. The return charge covers inspection, cleaning, disassembly, disposal and reissuing of components to inventory. If a replacement is needed prior to evaluation of returned item, a purchase order must be issued. Credit (if any) is issued only after return and evaluation is complete.

Dorner has representatives throughout the world. Contact Dorner for the name of your local representative. Our Customer Service Team will gladly help with your questions on Dorner products.

For a copy of Dorner's Warranty, contact factory, distributor, service center or visit our website at [www.dorner.com](http://www.dorner.com).

For replacement parts, contact an authorized Dorner Service Center or the factory.



Dorner Mfg. Corp. reserves the right to change or discontinue products without notice. All products and services are covered in accordance with our standard warranty. All rights reserved. © Dorner Mfg. Corp. 2014

#### DORNER MFG. CORP.

975 Cottonwood Ave., PO Box 20  
Hartland, WI 53029-0020 USA  
TEL 1-800-397-8664 (USA)  
FAX 1-800-369-2440 (USA)  
Internet: [www.dorner.com](http://www.dorner.com)

Outside the USA:  
TEL 1-262-367-7600  
FAX 1-262-367-5827