



# Sanitary Support Stands

## Installation, Maintenance and Parts Manual



DORNER MFG. CORP.  
P.O. Box 20 • 975 Cottonwood Ave.  
Hartland, WI 53029-0020 USA

INSIDE THE USA  
TEL: 1-800-397-8664  
FAX: 1-800-369-2440

OUTSIDE THE USA  
TEL: 262-367-7600  
FAX: 262-367-5827

For other service manuals visit our website at:

[www.dorner.com/service\\_manuals.asp](http://www.dorner.com/service_manuals.asp)

---

# Table of Contents

---

Introduction .....	2	Diagonal Brace Attachment for 7200 & 7300 Series ...	8
Warnings – General Safety.....	3	Diagonal Brace Attachment for 7400 Series .....	9
Product Description .....	4	Preventive Maintenance and Adjustment .....	10
Specifications .....	4	Stand Height Adjustment .....	10
Sanitary Support Stand Models .....	4	Required Tools.....	10
Installation .....	5	Stands with Feet.....	10
Required Tools.....	5	Stands with Casters .....	11
Recommended Installation Sequence .....	5	Conveyor Angle Adjustment.....	12
Stand Attachment to the Conveyor .....	5	Required Tools.....	12
Direct Mount Stands (DS Type).....	5	Service Parts.....	14
Pivot Mount Stands (DP and AM Types) .....	6	Direct Mount Sanitary Support Stand (Type DS) .....	14
7200 and 7300 Series.....	6	Pivot Mount Sanitary Support Stand (Type DP & MS) ..	16
7400 Series.....	7	Horizontal Mount Sanitary Support Stand (Type HM)..	18
Pivot Mount Stand (MS Type) Connected to Heavy Load		Incline Mount Sanitary Support Stand (Type AM).....	20
Drive Mount for 7200 and 7300 Series .....	7	Bracket Mount Sanitary Support Stand (Type BM).....	22
Horizontal and Bracket Mount Stands (HM and BM		Return Policy.....	24
Types) for 7400 Series .....	8		

---

## Introduction

---

### CAUTION

**Some illustrations may show guards removed. DO NOT operate equipment without guards.**


Upon receipt of shipment:

- Compare shipment with packing slip. Contact factory regarding discrepancies.
- Inspect packages for shipping damage. Contact carrier regarding damage. Accessories may be shipped loose.
- See accessory instructions for installation.

The Dorner Limited Warranty applies.

Dorner 7200 Series, 7300 Series and 7400 Series conveyors are covered by Patent Nos. 5174435, 6109427 and corresponding patents and patent applications in other countries.

Dorner reserves the right to make changes at any time without notice or obligation.

Dorner has convenient, pre-configured kits of Key Service Parts for all conveyor products. These time saving kits are easy to order, designed for fast installation, and guarantee you will have what you need when you need it. Key Parts and Kits are marked in the Service Parts section of this manual with the Performance Parts Kits logo .

## Warnings – General Safety

### DANGER



#### SEVERE HAZARD!

KEEP OFF CONVEYORS. Climbing, sitting, walking or riding on conveyor will result in death or serious injury.

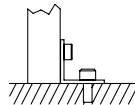
### DANGER



#### EXPLOSION HAZARD!

- DO NOT OPERATE CONVEYORS IN AN EXPLOSIVE ENVIRONMENT. The electric gearmotor generates heat and could ignite combustible vapors.
- Failure to comply will result in death or serious injury.

### DANGER



#### SEVERE INJURY!

- SUPPORTS MARKED WITH THIS SYMBOL MUST BE ANCHORED TO THE FLOOR.
- Supports not anchored to the floor will tip, causing serious injury or death.

### WARNING



#### CRUSH HAZARD!

- MAKE SURE TO SECURE ALL STAND SCREWS.
- Failure to do so may cause conveyor sections to drop down, causing serious injury.

### WARNING



#### CRUSH HAZARD!

- SUPPORT CONVEYOR SECTIONS PRIOR TO LOOSENING STAND HEIGHT OR ANGLE ADJUSTMENT SCREWS.
- Loosening stand height or angle adjustment screws may cause conveyor sections to drop down, causing serious injury.

### WARNING



#### SEVERE HAZARD!

LOCK OUT POWER before removing guards or performing maintenance. Exposed moving parts can cause serious injury.

### WARNING



#### SEVERE HAZARD!

- Dorner cannot control the physical installation and application of conveyors. Taking protective measures is the responsibility of the user.
- When conveyors are used in conjunction with other equipment or as part of a multiple conveyor system, CHECK FOR POTENTIAL PINCH POINTS and other mechanical hazards before system start-up.
- Failure to comply could result in serious injury.

# Product Description

Refer to (Figure 1) for typical support stand components.

## Typical Components

- 1 Support stand
- 2 Stand mounting bracket
- 3 Clamp plate
- 4 Height adjustment point
- 5 Angle adjustment point
- 6 Optional casters
- 7 Optional diagonal brace

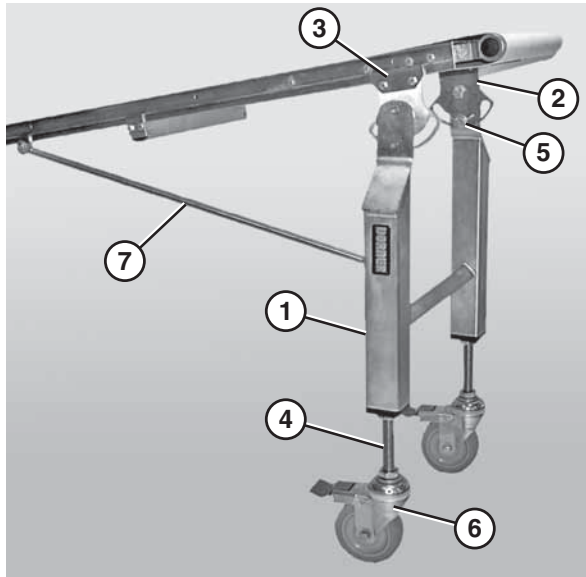


Figure 1

# Specifications

## Sanitary Support Stand Models

39 M TT WW - HH HH F AA

blank = Fixed Direct Mount  
00 - 60 = 0 to 60 Degrees  
ST = Fully Slotted (Non-sanitary)

### Floor Interface

F = Fixed Foot Pad  
C = Total Lock Swivel Caster  
B = Fixed Foot Pad with Diagonal Brace

### Max Height

From Floor to Top of Belt (shown) or  
From Floor to Top of Bracket  
(Heavy Load Bottom Mount Only)

### Min Height

From Floor to Top of Belt (shown) or  
From Floor to Top of Mounting Bracket  
(Heavy Load Bottom Mount Only)

Width = Conveyor Width  
02" (51mm) to 18" (457mm)

### Stand Type

DP = Direct Mount - Pivoting (7200, 7300 Series)  
DS = Direct Mount - Non-Pivoting (7200, 7300 Series)  
MS = Motor Mount - Pivoting (7200, 7300 Series)  
HM = Horizontal Mount (7400 Series)  
AM = Incline Mount (7400 Series)  
BM = Bracket Mount (7400 Series)

### Language Code

M = U.S. English

H Style Stand

## Example: 39MDS04-2226B

AquaPruf® direct mount sanitary support stand for a 4" (102mm) wide conveyor with a minimum height of 22" (559mm) and a maximum height of 26" (660mm). It comes with swivel foot pads, diagonal bracing, and U.S. English documentation.

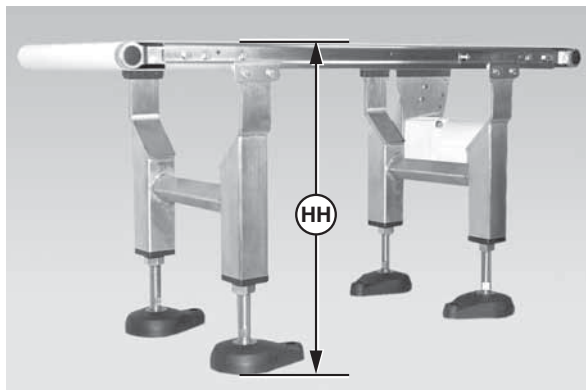


Figure 2

## Installation

### Required Tools

- Wrenches: 10 mm, 13 mm, 17 mm, 30 mm (for hex head cap screws)
- Level
- Torque wrench

### Recommended Installation Sequence

1. Attach the stand(s) to the conveyor.
2. Attach the diagonal bracing, if applicable.
3. Adjust the stand height and level.

### Stand Attachment to the Conveyor

<b>⚠ WARNING</b>

<p><b>SEVERE HAZARD!</b>  <b>LOCK OUT POWER</b> before removing guards or performing maintenance. Exposed moving parts can cause serious injury.</p>

### Direct Mount Stands (DS Type)

1. Properly support the conveyor or place the conveyor upside down on a flat surface.
2. Loosen the M6 clamp plate screws (Figure 3, item 1) on each side of the stand (Figure 3, item 2).

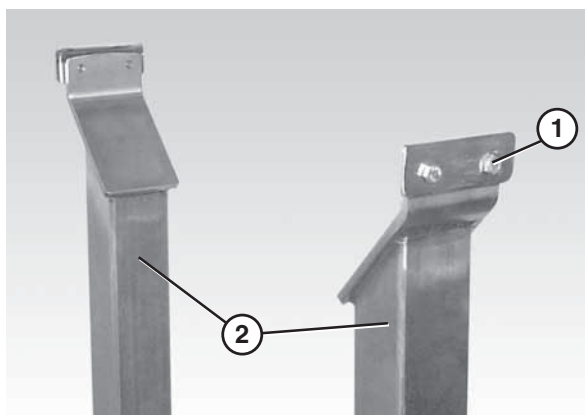


Figure 3

### CAUTION

Make sure the conveyor (Figure 4, item 1) is seated between the clamp plate (Figure 4, item 2) and the lip (Figure 4, item 3) at the top of the stand (Figure 4, item 4) before tightening the clamp plate screws (Figure 4, item 5).

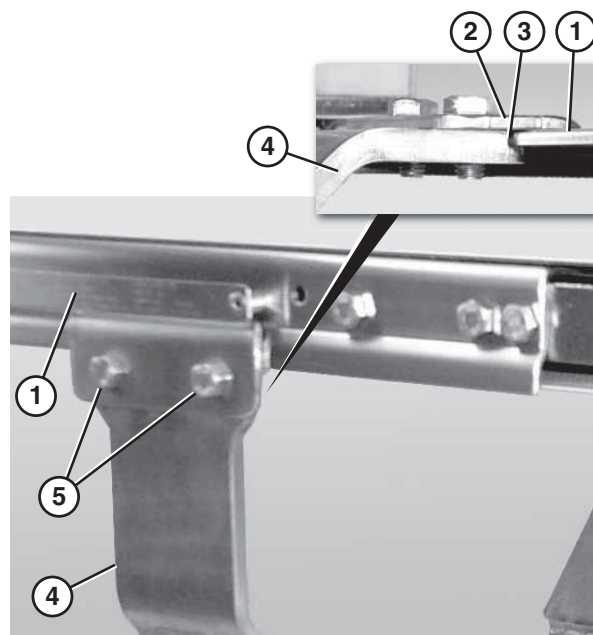


Figure 4

### ⚠ WARNING



### CRUSH HAZARD!

- **MAKE SURE TO SECURE ALL STAND SCREWS.**
- Failure to do so may cause conveyor sections to drop down, causing serious injury.

3. Attach the stand (Figure 4, item 4) to the conveyor (Figure 4, item 1) and tighten the four screws (Figure 4, item 5) to 80 in•lb (9 N•m).
4. Repeat steps 2 and 3 for the other stands.
5. Adjust the stand height. Refer to “Stand Height Adjustment” on page 10.

# Installation

## Pivot Mount Stands (DP and AM Types)

1. Properly support the conveyor or place the conveyor upside down on a flat surface.
2. For slotted brackets, loosen the two bracket screws (Figure 5, item 1) and adjust the bracket (Figure 5, item 2) so that the top is at approximately the same angle as the conveyor. Do not tighten the screws.

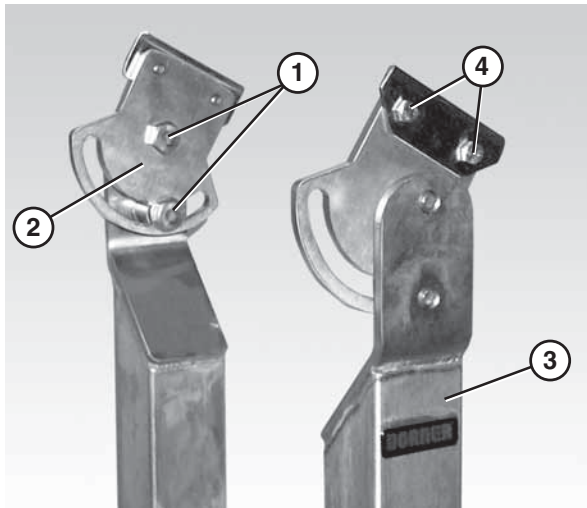


Figure 5

### 7200 and 7300 Series

3. Loosen the two M6 clamp plate screws (Figure 5, item 4) on each side of the stand (Figure 5, item 3).

#### CAUTION

Make sure the conveyor (Figure 6, item 1) is seated between the clamp plate (Figure 6, item 2) and the lip (Figure 6, item 3) at the top of the stand (Figure 6, item 4) before tightening the clamp plate screws (Figure 6, item 5).

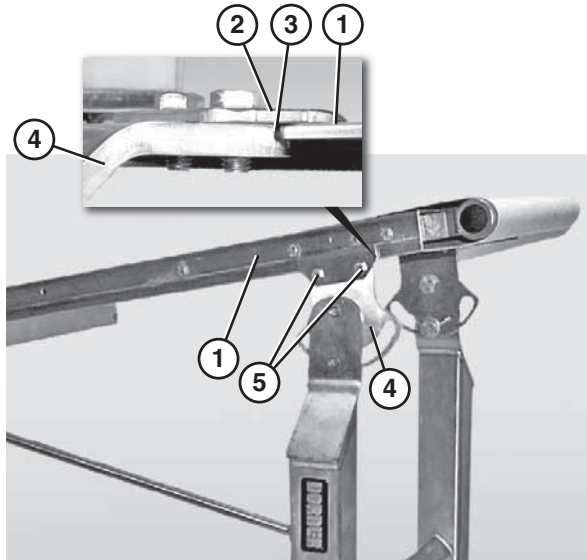


Figure 6

4. Attach the bracket (Figure 6, item 4) to the conveyor (Figure 6, item 1) and tighten the four screws (Figure 6, item 5) to 80 in•lb (9 N•m).

#### ⚠ WARNING



#### CRUSH HAZARD!

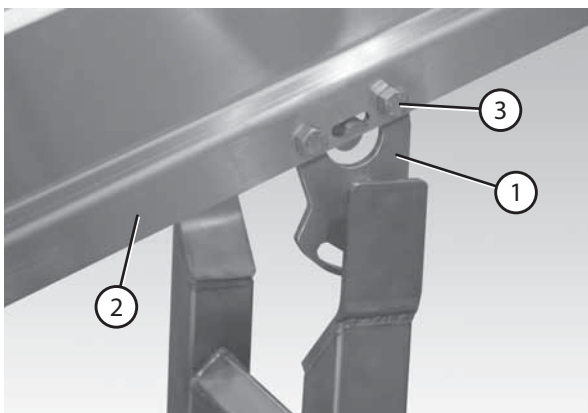
- MAKE SURE TO SECURE ALL STAND SCREWS.
- Failure to do so may cause conveyor sections to drop down, causing serious injury.

5. Adjust the bracket angle on the slotted brackets (Figure 5, item 2) to match the conveyor angle and tighten the screws (Figure 5, item 1) to 50 ft•lb (72 N•m).
6. Repeat steps 2 and 4 for the other stands.
7. Adjust the stand height. Refer to “Stand Height Adjustment” on page 10.



## 7400 Series

8. Position the stand so that the holes in the brackets line up with the appropriate holes in the conveyor frame.
9. Attach the bracket (**Figure 7, item 1**) to the conveyor (**Figure 7, item 2**) using four M10-1.5 x 12mm hex head cap screws (**Figure 7, item 3**).



**Figure 7**

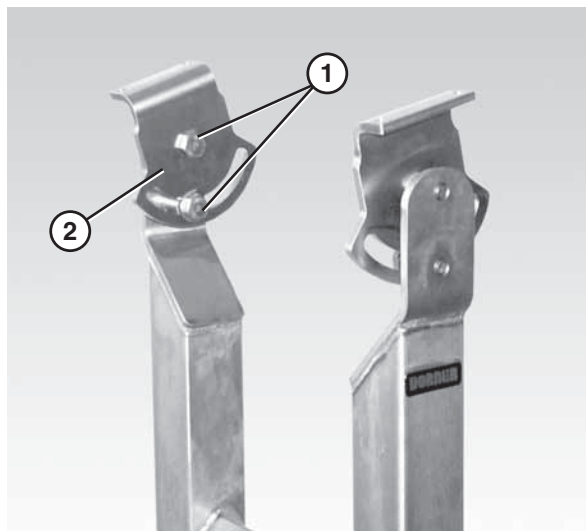
10. Tighten the four M10 screws (**Figure 7, item 3**) to 80 in•lb (9 N•m)

<b>⚠ WARNING</b>
<p style="text-align: center;"><b>CRUSH HAZARD!</b></p> <ul style="list-style-type: none"> <li><b>MAKE SURE TO SECURE ALL STAND SCREWS.</b></li> <li><b>Failure to do so may cause conveyor sections to drop down, causing serious injury.</b></li> </ul>

11. Adjust the bracket angle on the slotted brackets (**Figure 7, item 1**) to match the conveyor angle and tighten the screws to 50 ft•lb (72 N•m).
12. Repeat steps 2 and 4 for the other stands.
13. Adjust the stand height. Refer to “Stand Height Adjustment” on page 10.

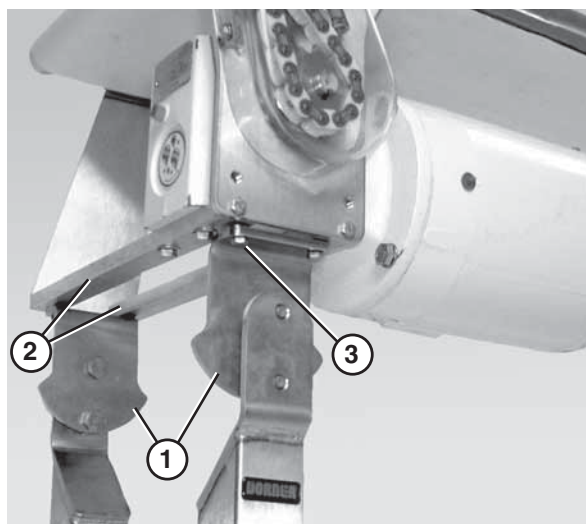
## Pivot Mount Stand (MS Type) Connected to Heavy Load Drive Mount for 7200 and 7300 Series

1. Properly support the conveyor.
2. For slotted brackets, loosen the two bracket screws (**Figure 8, item 1**) and adjust the bracket (**Figure 8, item 2**) so that the top is at approximately the same angle as the conveyor. Do not tighten the screws.



**Figure 8**

3. Attach both brackets (**Figure 9, item 1**) to the heavy mount gearhead support bars (**Figure 9, item 2**) using four M6 - 1.0 x 20 mm hex head cap screws (**Figure 9, item 3**).



**Figure 9**

4. Tighten the heavy mount gearhead support bar screws (**Figure 9, item 3**) to 80 in•lb (9 N•m).
5. Tighten the bracket screws (**Figure 9, item 1**) to 50 ft•lb (72 N•m)

# Installation

## ⚠ WARNING



### CRUSH HAZARD!

- **MAKE SURE TO SECURE ALL STAND SCREWS.**
- **Failure to do so may cause conveyor sections to drop down, causing serious injury.**

6. Adjust the stand height. Refer to “Stand Height Adjustment” on page 10.

## Horizontal and Bracket Mount Stands (HM and BM Types) for 7400 Series

1. Properly support conveyor or place conveyor upside down on a flat surface.
2. Attach the stand (Figure 10, item 1) to the conveyor (Figure 10, item 2) using four M10-1.5 x 12mm hex head cap screws (Figure 10, item 3).

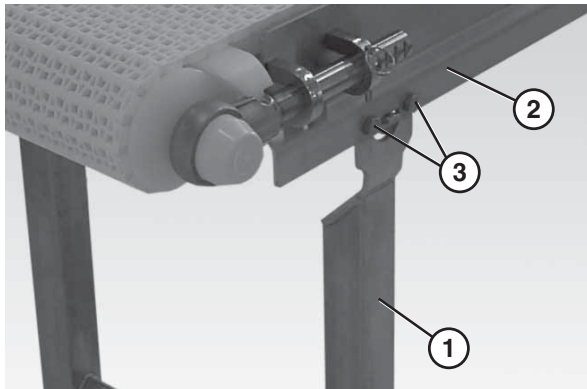


Figure 10

3. Tighten the stand screws (Figure 10, item 3) to 80 in•lb (9 N•m).

## ⚠ WARNING



### CRUSH HAZARD!

- **MAKE SURE TO SECURE ALL STAND SCREWS.**
- **Failure to do so may cause conveyor sections to drop down, causing serious injury.**

4. Adjust the stand height. Refer to “Stand Height Adjustment” on page 10.

## Diagonal Brace Attachment for 7200 and 7300 Series

1. Install the rod end (Figure 11, item 1) of the diagonal brace (Figure 11, item 2) on the stud (Figure 11, item 3) and secure it with an M8 acorn nut (Figure 11, item 4).

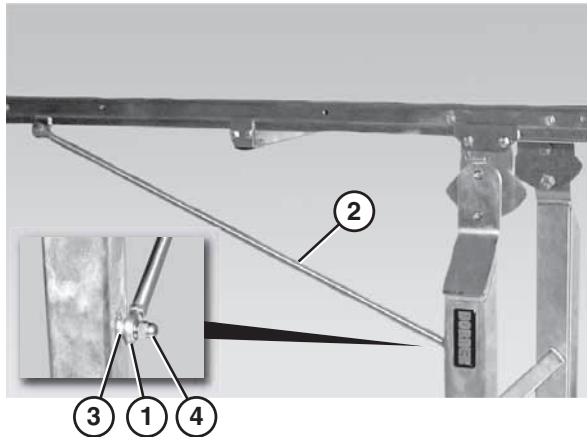


Figure 11

2. Slip the clip (Figure 12, item 1) onto the conveyor (Figure 12, item 2). Loosen the M6 screw (Figure 12, item 3), if necessary.

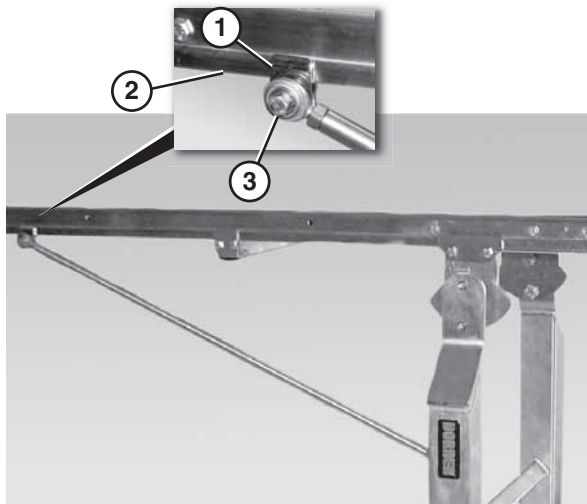


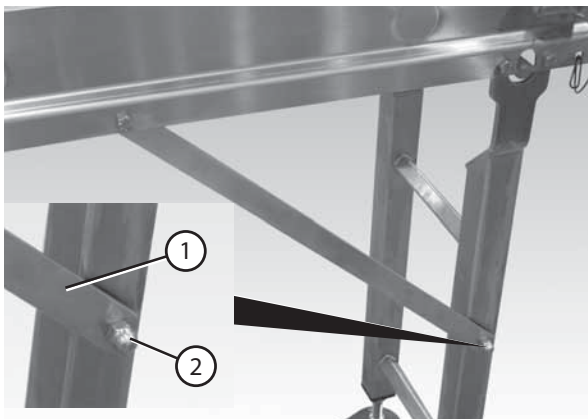
Figure 12

3. Tighten the M6 screw (Figure 12, item 3) to 80 in•lb (9 N•m).



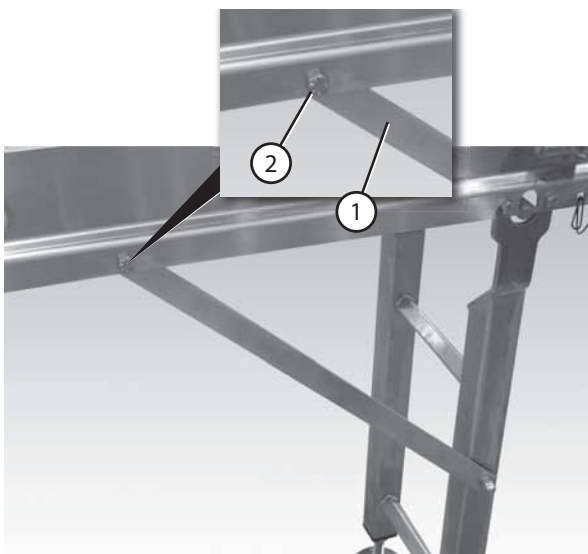
## Diagonal Brace Attachment for 7400 Series

1. Attach the bracing bar (**Figure 13, item 1**) to the stand and secure it with an M10 acorn nut (**Figure 13, item 2**).



**Figure 13**

2. Attach the opposite end of the bracing bar (**Figure 14, item 1**) to the conveyor with an M10 screw (**Figure 14, item 2**).



**Figure 14**

3. Tighten the screw and the acorn nut to 80 in•lb (9 N•m).

# Preventive Maintenance and Adjustment

## Stand Height Adjustment

### Required Tools

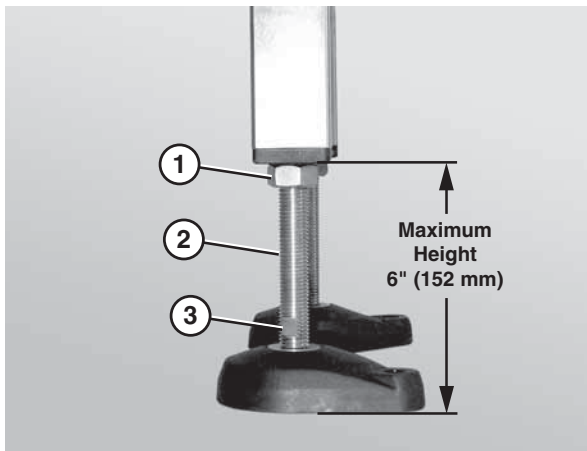
- 30 mm wrench
- 0 – 1-1/4" span adjustable wrench (stands with feet)
- Adjustable wrenches (stands with casters)
- Level

### Stands with Feet


<b>⚠ WARNING</b>

<b>SEVERE HAZARD!</b> <b>LOCK OUT POWER</b> before removing guards or performing maintenance. Exposed moving parts can cause serious injury.

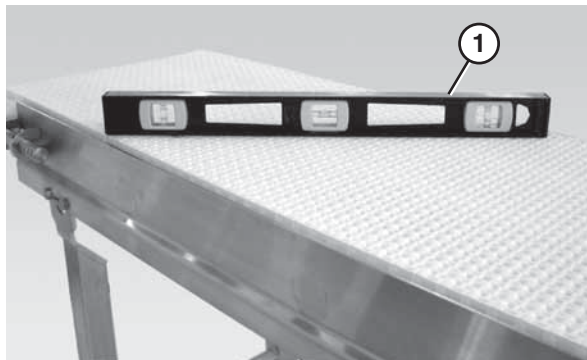
1. Loosen the nut (**Figure 15, item 1**) on the foot stem (**Figure 15, item 2**).



**Figure 15**

<b>⚠ WARNING</b>

<b>SEVERE HAZARD!</b> <ul style="list-style-type: none"><li>• <b>DO NOT EXCEED THE MAXIMUM HEIGHT OF 6" (152 mm)</b> from the floor to the bottom of the stand.</li><li>• <b>Exceeding the maximum height will allow parts to separate and may cause serious injury.</b></li></ul>

2. Rotate the foot stem using an adjustable wrench on the foot stem flats (**Figure 15, item 3**) to raise or lower the stand to the desired height.
3. Repeat steps 1 and 2 on the opposite stand leg.
4. Use a level (**Figure 16, item 1**) to verify that both stand legs are the same height.



**Figure 16**

5. Tighten the nut (**Figure 15, item 1**) on the foot stem (**Figure 15, item 2**) to secure each foot assembly.

# Preventive Maintenance and Adjustment

## Stands with Casters

<b>⚠ WARNING</b>

<b>SEVERE HAZARD!</b> <b>LOCK OUT POWER</b> before removing guards or performing maintenance. Exposed moving parts can cause serious injury.

1. Loosen the upper nut (Figure 16, item 1) on the caster stem (Figure 16, item 2).

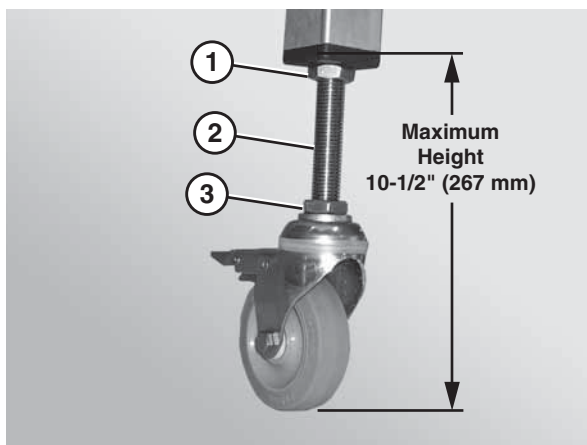


Figure 17

<b>⚠ WARNING</b>

<b>SEVERE HAZARD!</b> <ul style="list-style-type: none"><li>• DO NOT EXCEED THE MAXIMUM HEIGHT OF 10-1/2" (267 mm) from the floor to the bottom of the stand.</li><li>• Exceeding the maximum height will allow parts to separate and may cause serious injury.</li></ul>

2. Rotate the lower nut (Figure 16, item 3) on the caster stem (Figure 16, item 2) to raise or lower the stand to the desired height.
3. Repeat steps 1 and 2 on the opposite stand leg.
4. Use a level (Figure 18, item 1) to verify that both stand legs are the same height.

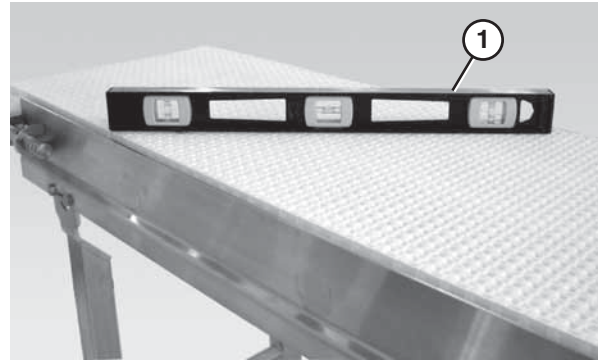


Figure 18

5. Tighten the nut on the caster stem to secure each caster assembly.

# Preventive Maintenance and Adjustment

## Conveyor Angle Adjustment

### NOTE

*This procedure only applies to stands with slotted brackets.*

### Required Tools

- 10 and 17 mm wrenches (for hexagonal head screws)
- Torque wrench

### ⚠ WARNING



### SEVERE HAZARD!

**LOCK OUT POWER** before removing guards or performing maintenance. Exposed moving parts can cause serious injury.

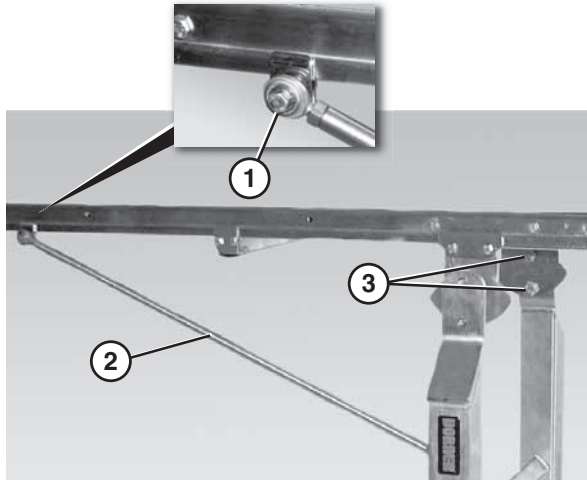
### ⚠ WARNING



### CRUSH HAZARD!

- **SUPPORT CONVEYOR SECTIONS PRIOR TO LOOSENING STAND HEIGHT OR ANGLE ADJUSTMENT SCREWS.**
- **Loosening stand height or angle adjustment screws may cause conveyor sections to drop down, causing serious injury.**

1. Loosen the screw (Figure 19, item 1) on the diagonal brace (Figure 19, item 2), if applicable.



**Figure 19**

2. Loosen the bracket screws (Figure 19, item 3) on both sides of the stand.
3. Adjust the conveyor to the desired length and the stands to the desired angle.

### ⚠ WARNING



### CRUSH HAZARD!

- **MAKE SURE TO SECURE ALL STAND SCREWS.**
- **Failure to do so may cause conveyor sections to drop down, causing serious injury.**

4. Tighten the bracket screws (Figure 19, item 3) to 50 ft•lb (72 N•m)
5. Tighten the screws on the diagonal brace, if applicable, to 80 in•lb (9 N•m).

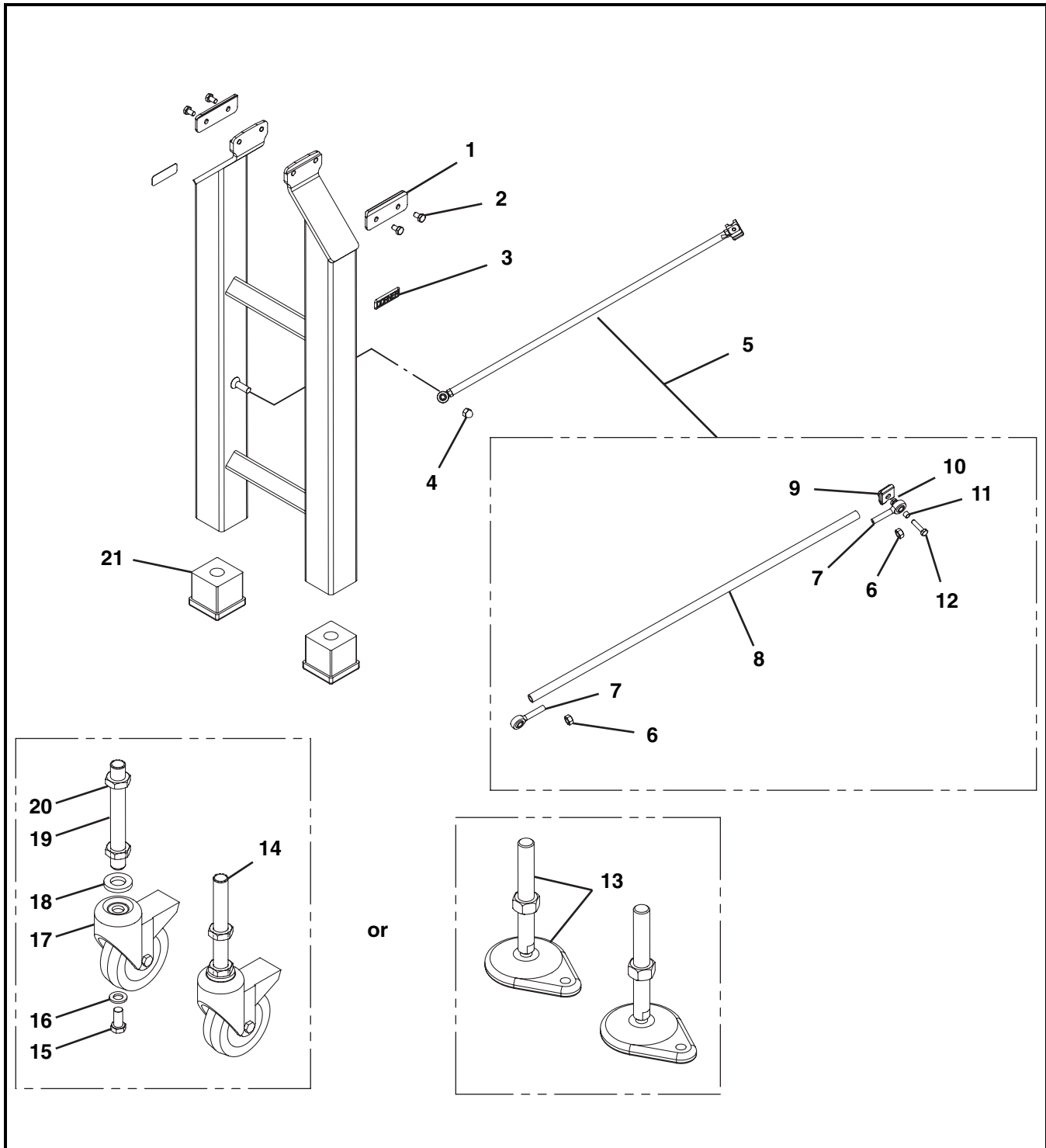


# Service Parts

## NOTE

*For replacement parts other than those shown in this section, contact an authorized Dorner Service Center or the factory.*

## Direct Mount Sanitary Support Stand (Type DS)



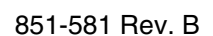


# Service Parts

Item	Part Number	Description
1	492564SS	Clamp Plate (x2)
2	960610MSS	Hex Head Cap Screw M6-1.0 x 10mm (x4)
3	240339	Dorner Nameplate (x2)
4	990808MSS	Acorn Nut M8-1.25
5	711119	Brace Assembly (Includes Items 6 through 12)
6	910-195	Hex Nut 5/16-18NF (x2)
7	801-131	Rod End Bearing SS (x2)
8	711117	Brace Tube
9	450186MSS	Clip
10	990609MSS	Jam Nut M6-1.0
11	450226SSP	Sleeve

Item	Part Number	Description
12	960625MSS	Hex Head Cap Screw M6-1.0 x 25mm
13	807-1321	Teardrop Foot Assembly
14	458309	Caster Assembly (Includes Items 15 through 20)
15	961225MSS	Hex Head Cap Screw M12-1.75 x 25mm
16	911-519	Washer
17	807-1322	Caster
18	911-520	Washer
19	458308	Caster Stem
20	992010MSS	Jam Nut M20-2.50 (2x)
21	807-1304	Threaded Tube End

## Pivot Mount Sanitary Support Stand (Type DP and MS)



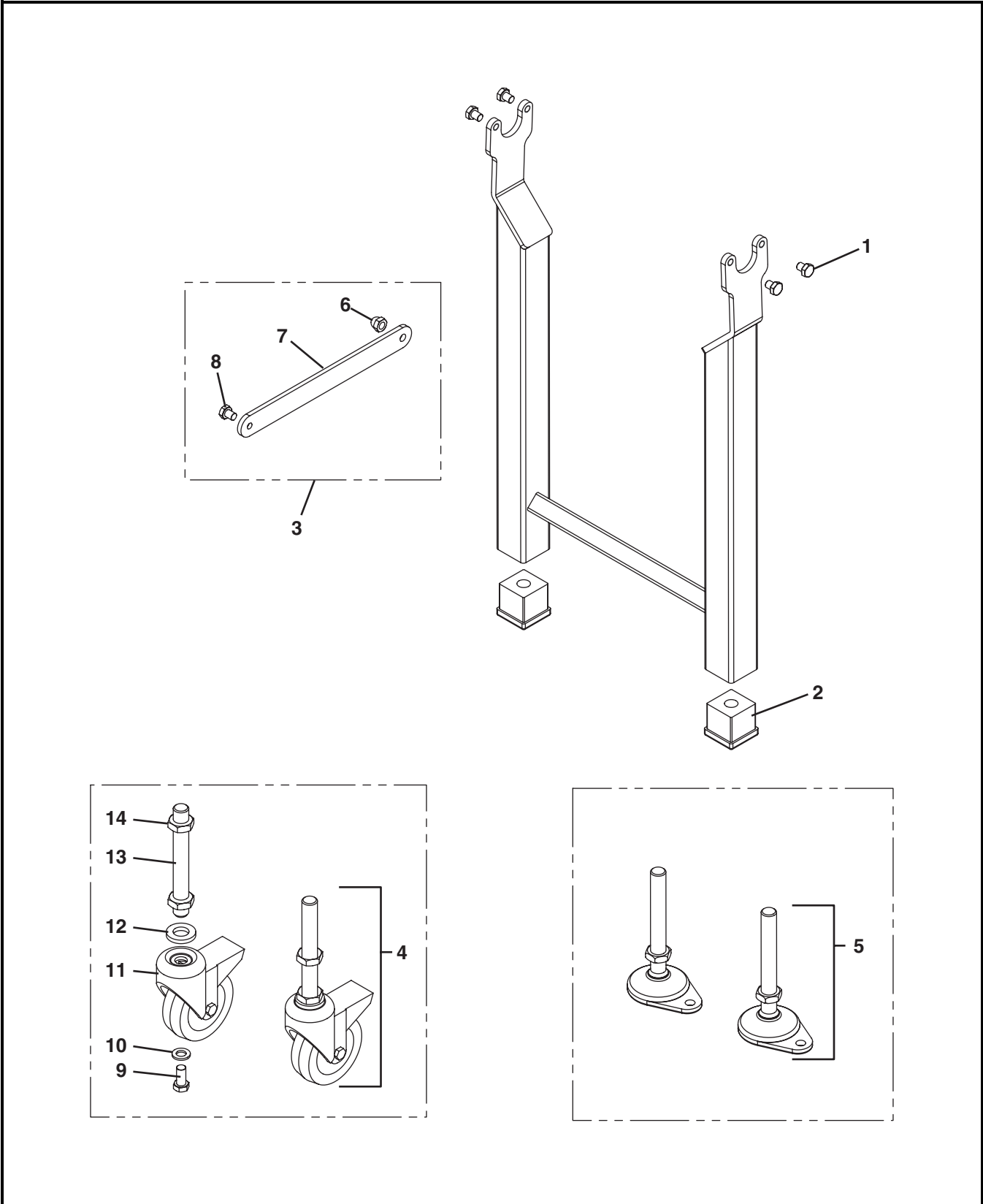
# Service Parts

Item	Part Number	Description
1	492564SS	Clamp Plate (x2)
2	960610MSS	Hex Head Cap Screw M6-1.0 x 10mm (x4)
3	240339	Dorner Nameplate (x2)
4	990808MSS	Acorn Nut M8-1.25
5	711119	Brace Assembly (Includes Items 6 through 12)
6	910-195	Hex Nut 5/16-18NF (x2)
7	801-131	Rod End Bearing SS (x2)
8	711117	Brace Tube
9	450186MSS	Clip
10	990609MSS	Jam Nut M6-1.0
11	450226SSP	Sleeve
12	960625MSS	Hex Head Cap Screw M6-1.0 x 25mm
13	807-1321	Teardrop Foot Assembly
14	458309	Caster Assembly (Includes Items 15 through 20)
15	961225MSS	Hex Head Cap Screw M12-1.75 x 25mm
16	911-519	Washer
17	807-1322	Caster
18	911-520	Washer
19	458308	Caster Stem
20	992010MSS	Jam Nut M20-2.50 (x2)

Item	Part Number	Description
21	807-1304	Threaded Tube End
22	458311	Post - 2" (51mm) and 3" (76mm)
	458310	Post - 4" (102mm) through 18" (457mm)
23	961045MSS	Hex Head Cap Screw, M10-1.5 x 45mm - 2" (51mm) and 3" (76mm)
	961030MSS	Hex Head Cap Screw, M10-1.5 x 30mm - 4" (102mm) through 18" (457mm)
24	458312LAA*	Fixed Angle, Direct Mount Pivot Bracket LH
	458312RAA*	Fixed Angle, Direct Mount Pivot Bracket RH
	450527**	Direct Mount Slotted Pivot Bracket
25	458307LAA*	Fixed Angle, Heavy Load Drive Mount Bracket LH
	458307RAA*	Fixed Angle, Heavy Load Drive Mount Bracket RH
	450526**	Heavy Load Drive Mount Slotted Bracket
26	960620MSS	Hex Head Cap Screw M6-1.0 x 20mm
* AA = Angle 00 through 60 degrees in 01 degree increments		
** Bracket slot provides mounting from 0 through 60 degrees		

# Service Parts

## Horizontal Mount Sanitary Support Stand (Type HM)



# Service Parts

Item	Part Number	Description
1	961012MSS	Hex Head Cap Screw M10-1.5 x 12mm
2	807-1304	Threaded End Tube
3	39MB- <u>LLL</u>	Bracing Assembly (Includes Items 6 through 8)
4	458309	Caster Assembly (Includes Items 9 through 14)
5	807-1321	Teardrop Foot Assembly
6	991008MSS	Acorn Nut M10-1.50
7	500287- <u>LLLLL</u>	Bracing Bar
8	961012MSS	Hex Head Cap Screw M10-1.5 x 12mm
9	961225MSS	Hex Head Cap Screw M12-1.75 x 25mm
10	911-519	Washer
11	807-1322	Caster

Item	Part Number	Description
12	911-520	Washer
13	458308	Caster Stem
14	992010MSS	Jam Nut M20-2.50
<u>LLLLL</u> = Bracing bar length in inches with two decimal places		
<b>Example:</b> Bracing bar length = 21.75" <u>LLLLL</u> = 02175		

## LLL Length Formula

$$\underline{LLL} = \frac{\underline{LLLLL} - 125}{100}$$

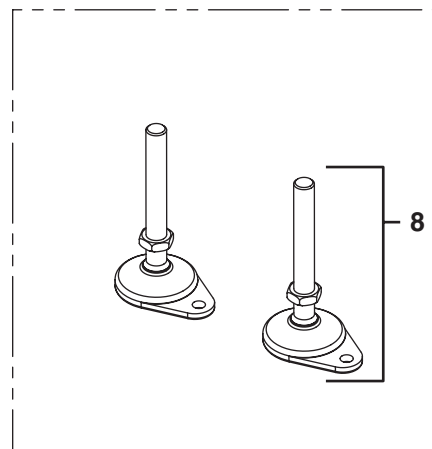
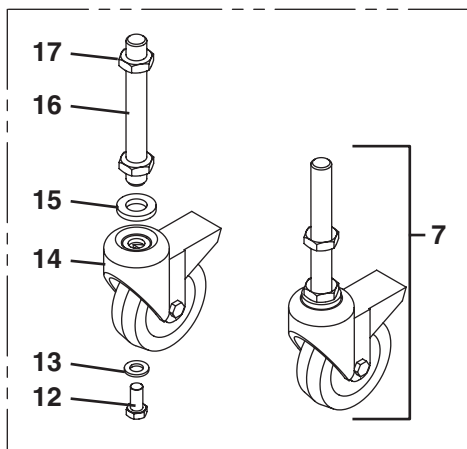
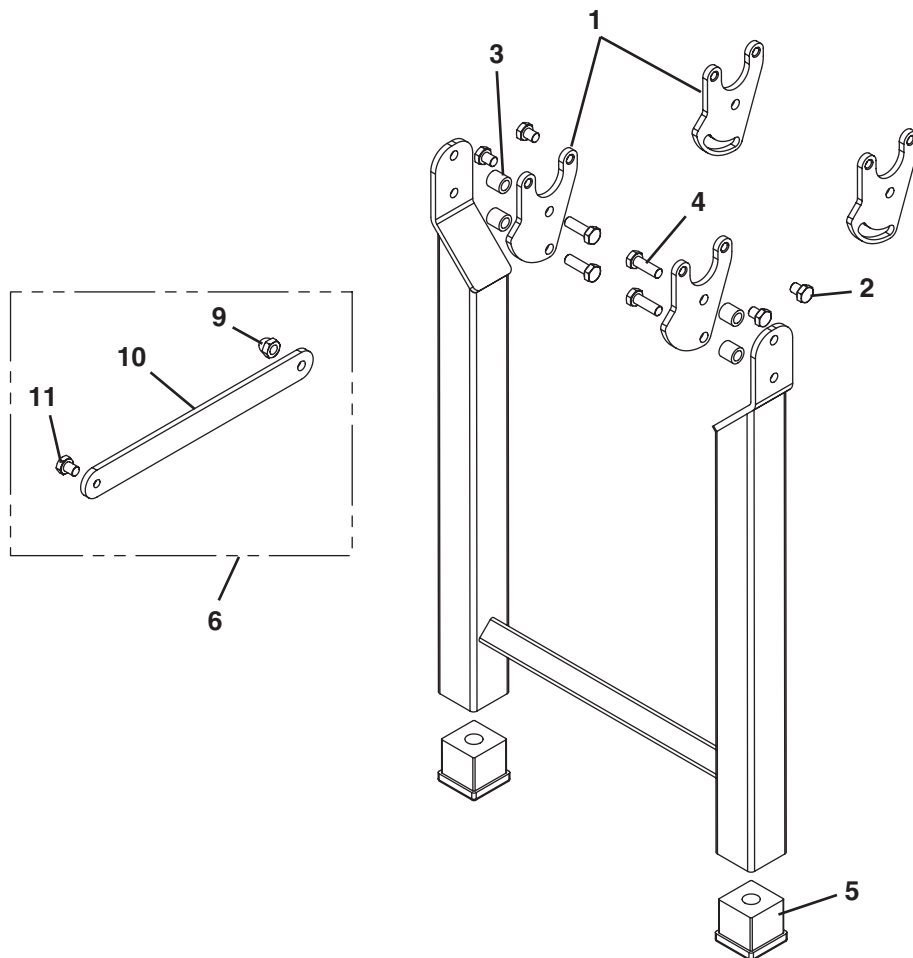
with one decimal place

**Example:**  $\underline{LLL} = \frac{02175 - 125}{100} = 20.5$

$$\underline{LLL} = 205$$

# Service Parts

## Incline Mount Sanitary Support Stand (Type AM)





Item	Part Number	Description
1	500276-AA	Pivot Mount Plate
	500276-ST	Slotted Pivot Mount Plate
2	961012MSS	Hex Head Cap Screw M10-
3	458310	Stand Post Standoff
4	961030MSS	Hex Head Cap Screw M10-1.5 x 30mm
5	807-1304	Threaded End Tube
6	39MB-LLL	Bracing Assembly (Includes Items 9 through 11)
7	458309	Caster Assembly (Includes Items 12 through 17)
8	807-1321	Teardrop Foot Assembly
9	991008MSS	Acorn Nut M10-1.50
10	500287-LLLLL	Bracing Bar
11	961012MSS	Hex Head Cap Screw M10-1.5 x 12mm
12	961225MSS	Hex Head Cap Screw M12-1.75 x 25mm
13	911-519	Washer

Item	Part Number	Description
14	807-1322	Caster
15	911-520	Washer
16	458308	Caster Stem
17	992010MSS	Jam Nut M20-2.50
AA= Angle 00 through 60 in 01 degree increments		
LLLLL = Bracing bar length in inches with two decimal places		
Example: Bracing bar length = 21.75" LLLLL = 02175		

#### LLL Length Formula

$$LLL = \frac{LLLLL - 125}{100}$$

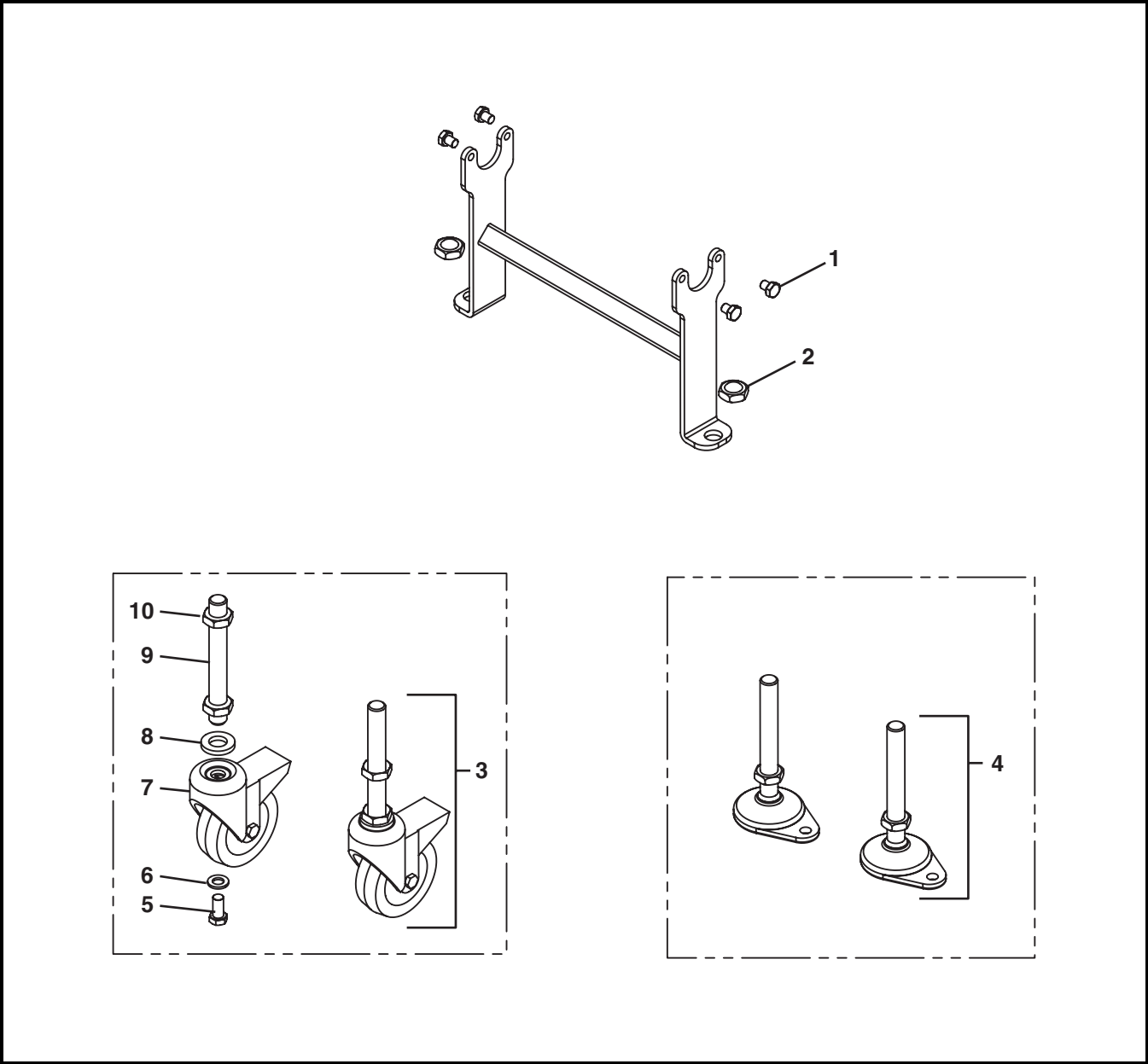
with one decimal place

Example:  $LLL = \frac{02175 - 125}{100} = 20.5$

$$LLL = 205$$

# Service Parts

## Bracket Mount Sanitary Support Stand (Type BM)



Item	Part Number	Description
1	961012MSS	Hex Head Cap Screw M10-1.5 x 12mm
2	992001MSS	Hex Nut M20-2.50
3	458309	Caster Assembly (Includes Items 5 through 10)
4	807-1321	Teardrop Foot Assembly
5	961225MSS	Hex Head Cap Screw M12-1.75 x 25mm

Item	Part Number	Description
6	911-519	Washer
7	807-1322	Caster
8	911-520	Washer
9	458308	Caster Stem
10	992010MSS	Jam Nut M20-2.50



# Return Policy

Returns must have prior written factory authorization or they will not be accepted. Items that are returned to Dorner without authorization will not be credited nor returned to the original sender. When calling for authorization, please have the following information ready for the Dorner factory representative or your local distributor:

1. Name and address of customer.
2. Dorner part number(s) of item(s) being returned.
3. Reason for return.
4. Customer's original order number used when ordering the item(s).
5. Dorner or distributor invoice number.

A representative will discuss action to be taken on the returned items and provide a Returned Goods Authorization number for reference.

There will be a return charge on all new undamaged items returned for credit where Dorner was not at fault. Dorner is not responsible for return freight on such items.

## **Conveyors and conveyor accessories**

Standard catalog conveyors	30%
MPB Series, cleated and specialty belt conveyors	50%
7400 & 7600 Series conveyors	non-returnable items
Engineered special products	case by case
Drives and accessories	30%
Sanitary stand supports	non-returnable items

## **Parts**

Standard stock parts	30%
MPB, cleated and specialty belts	non-returnable items

Returns will not be accepted after 60 days from original invoice date.

The return charge covers inspection, cleaning, disassembly, disposal and reissuing of components to inventory.

If a replacement is needed prior to evaluation of returned item, a purchase order must be issued. Credit (if any) is issued only after return and evaluation is complete.

Dorner has representatives throughout the world. Contact Dorner for the name of your local representative. Our Technical Sales, Catalog Sales and Service Teams will gladly help with your questions on Dorner products.

For a copy of Dorner's Warranty, contact factory, distributor, service center or visit our website at [www.dorner.com](http://www.dorner.com).

For replacement parts, contact an authorized Dorner Service Center or the factory.



Dorner Mfg. Corp. reserves the right to change or discontinue products without notice. All products and services are covered in accordance with our standard warranty. All rights reserved. © Dorner Mfg. Corp. 2005

## **DORNER MFG. CORP.**

975 Cottonwood Drive, PO Box 20  
Hartland, WI 53029-0020 USA  
USA  
TEL 1-800-397-8664 (USA)  
FAX 1-800-369-2440 (USA)  
Internet: [www.dorner.com](http://www.dorner.com)

Outside the USA:  
TEL 1-262-367-7600  
FAX 1-262-367-5827