

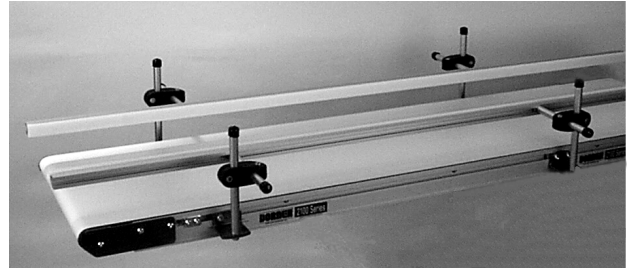
## Profile 13 Guiding



WARNING

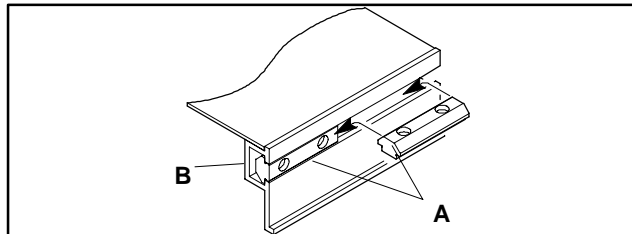


To prevent injury, make sure all electrical power sources have been disconnected before performing any component assembly or adjustments.

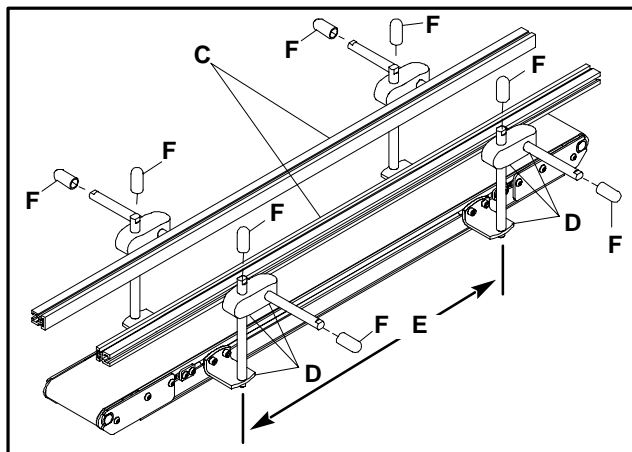


Profile 13 guiding may be shipped from the factory in varying stages of assembly. If necessary, assemble the components in the manner shown.

1. Insert each drop-in T-bar (A of Figure 1) into the conveyor frame T-slot (B) by rolling it into position as shown.



**Figure 1: Drop-in T-Bar Installation Detail**



**Figure 2**


**NOTE: Same parts can be installed on 2100 or 3100 Series Belted or Roller Conveyors**

### NOTE:


For a 3100 Series conveyor, install the Drop-in T-Bar in the upper slot in the same manner.

2. Evenly space the T-bars, on both sides of the conveyor (Figure 2), at distances (E), no greater than 915 mm.
3. After final positioning, be sure to tightly secure all mounting hardware. Install the vinyl caps (F).

Nominal Conveyor Length in mm	Total Quantity of Support Assemblies (D)
610	4
915	4
1220	4
1525	4
1830	6
2135	6
2440	6
2745	8
3050	8
3355	8
3660	8
3965	10



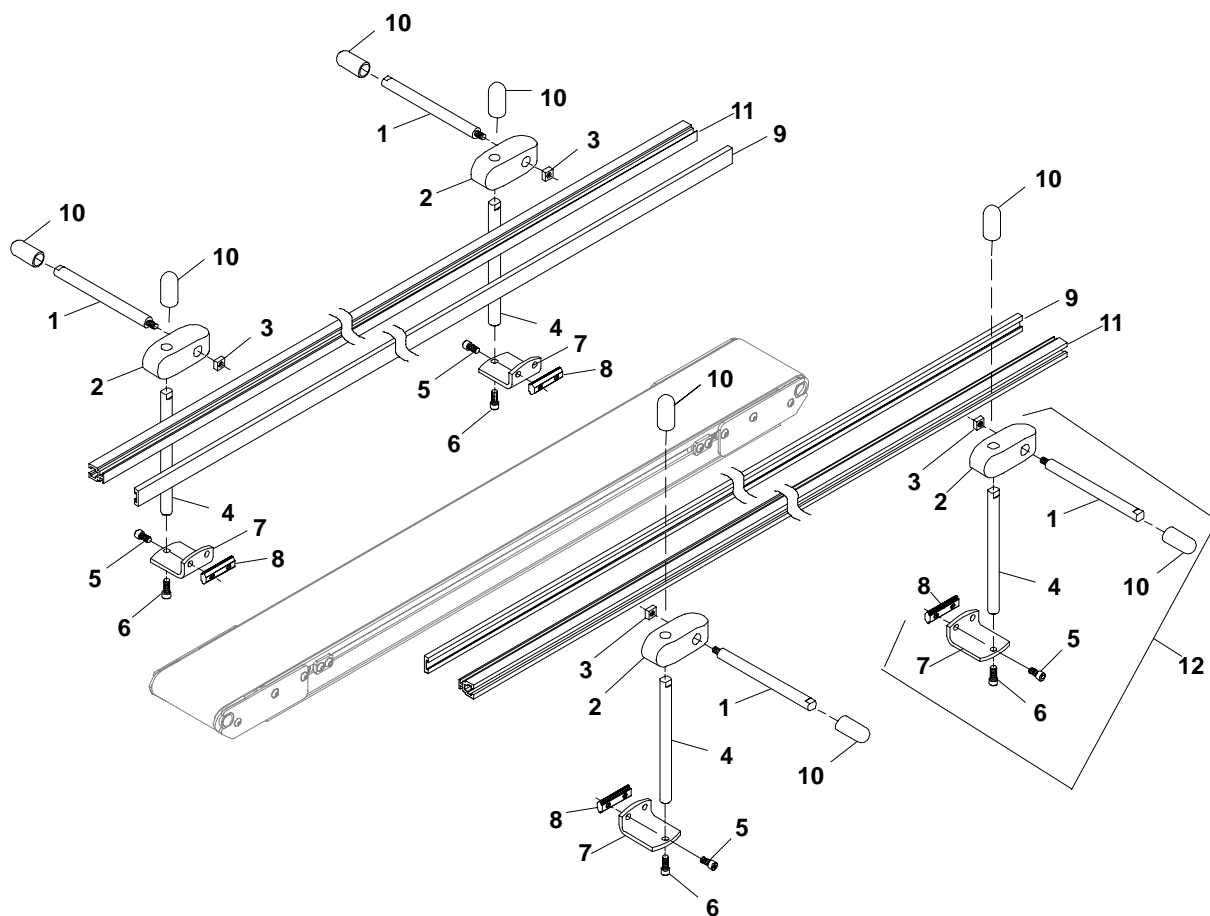
WARNING



After installing guiding and before operating conveyor, be sure to eliminate any potential pinch points that may have been created. To prevent injury, keep fingers and hands away from pinch point areas while the conveyor is running.

# Re-assembly Instructions

## Replacement Parts



Item	Part No.
1	202028M
2	807-652
3	674175MP
4	202027M
5	920612M
6	920616M
7	202004M
8	200830M
9	614068P*
10	802-948

\* Ordered in 305 mm increments.

Item	Part No.
11	202983 (610 mm**)
	202984 (915 mm**)
	202985 (1220 mm**)
	202986 (1525 mm**)
	202987 (1830 mm**)
	202988 (2135 mm**)
	202989 (2440 mm**)
	202990 (2745 mm**)
	202991 (3050 mm**)
	202992 (3355 mm**)
	202993 (3660 mm**)
	202994 (3965 mm**)
12	381300M

\*\* Nominal Conveyor Length.

# DORNER®

Dorner Mfg. Corp. reserves the right to change or discontinue products without notice. All products and services are covered in accordance with our standard warranty. All rights reserved. ©Dorner Mfg. Corp. 1998

### DORNER MFG. CORP.

580 Industrial Drive, PO Box 20  
Hartland, WI 53029-0020 USA

USA

TEL 1-800-397-8664 (USA)

FAX 1-800-369-2440 (USA)

Outside the USA:

TEL 1-414-367-7600, FAX 1-414-367-5827

### DORNER

Arnold-Sommerfeld-Ring 2  
D-52499 Baesweiler

Germany

TEL (02401) 80 52 90

FAX (02401) 80 52 93