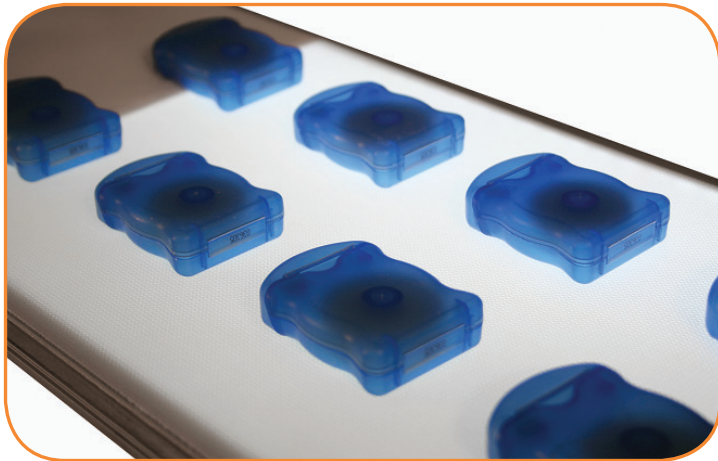




BACKLIT CONVEYORS

MOVE FAST. MOVE SMART.



Illuminated Conveyors for Visual Inspection and Quality Control

- Light fixture is installed inside the conveyor frame and emits light through a translucent belt.
- Provides enhanced contrast between product and conveyor belt for visual inspection and vision system interface
- Parts can be stopped directly over the lighted section or continue through uninterrupted

Features & Specifications

- Available on Dorner 1100, 2200 & 3200 Series Belt Conveyors
- Sanitary Backlit Conveyors also available. Contact factory for details
- Aluminum extruded frame with T-Slot construction
- Sealed ball bearings
- Translucent Belting with fused finger splice
- Load capacity: contact factory for details
- Reference the conveyor specification sheet or www.dorner.com for additional details and specifications



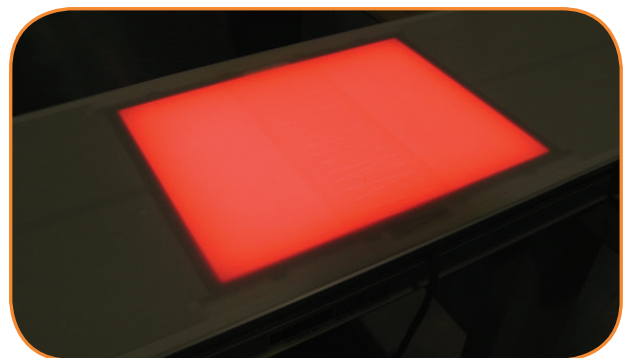
Ideal for a variety of products

Backlit Specifications

- LED Edge-lit light panels
- Multiple color options available including White, Red, Blue, and Green
- Light fixture is installed inside of the conveyor frame
- Light sizes vary based on application

Options & Accessories

- Standard support stands and guiding options are available
- All standard 1100, 2200 & 3200 Series mounting packages and gearmotors are available



Variety of Light Colors Available

DORNER MFG. CORP.
 PO Box 20 • 975 Cottonwood Ave.
 Hartland, WI 53029 USA

INSIDE THE USA
 TEL: 800.397.8664
 FAX: 800.369.2440

OUTSIDE THE USA
 TEL: 262.367.7600
 FAX: 262.367.5827

www.dorner.com
info@dorner.com

