

**DORNER**<sup>®</sup>

*AquaGard*<sup>™</sup>

# 7350 Series Side Mount 90° Drive Package

Installation, Maintenance & Parts Manual



DORNER MFG. CORP.  
P.O. Box 20 • 975 Cottonwood Ave.  
Hartland, WI 53029-0020 USA

INSIDE THE USA  
TEL: 1-800-397-8664  
FAX: 1-800-369-2440

OUTSIDE THE USA  
TEL: 262-367-7600  
FAX: 262-367-5827

For other service manuals visit our website at:  
[www.dorner.com/service\\_manuals.asp](http://www.dorner.com/service_manuals.asp)

# Table of Contents

|   |   |   |    |
|---|---|---|----|
| Introduction .....                            | 2 | Installation.....                           | 7  |
| Warnings - General Safety .....               | 3 | Required Tools .....                        | 7  |
| Product Description .....                     | 4 | Side Drive Package .....                    | 7  |
| Specifications .....                          | 4 | Preventive Maintenance and Adjustment ..... | 9  |
| Gearmotor Mounting Package Models:.....       | 4 | Required Tools .....                        | 9  |
| Table 1: Gearmotor Specifications .....       | 5 | Check List.....                             | 9  |
| Table 2: Belt Speeds for                      |   | Gear Reducer Replacement .....              | 9  |
| Fixed Speed 90° Painted Gearmotors .....      | 5 | Motor Replacement .....                     | 11 |
| Table 3: Belt Speeds for                      |   | Service Parts.....                          | 13 |
| Variable Speed 90° Painted Gearmotors .....   | 5 | Side Mount Drive Package for                |    |
| Table 4: Belt Speeds for                      |   | 90° Industrial Gearmotors .....             | 13 |
| Fixed Speed 90° Stainless Gearmotors .....    | 6 | Gearmotor Assembly.....                     | 14 |
| Table 5: Belt Speeds for                      |   | Notes .....                                 | 15 |
| Variable Speed 90° Stainless Gearmotors ..... | 6 | Return Policy.....                          | 16 |

## Introduction

### IMPORTANT


*Some illustrations may show guards removed. DO NOT operate equipment without guards.*

Upon receipt of shipment:

- Compare shipment with packing slip. Contact factory regarding discrepancies.
- Inspect packages for shipping damage. Contact carrier regarding damage.
- Accessories may be shipped loose. See accessory instructions for installation.

Dorner's Limited Warranty applies.

Dorner reserves the right to make changes at any time without notice or obligation.

Dorner has convenient, pre-configured kits of Key Service Parts for all conveyor products. These time saving kits are easy to order, designed for fast installation, and guarantee you will have what you need when you need it. Key Parts and Kits are marked in the Service Parts section of this manual with the Performance Parts Kits  logo.

# Warnings - General Safety

## WARNING

The safety alert symbol, black triangle with white exclamation, is used to alert you to potential personal injury hazards.

## DANGER



Climbing, sitting, walking or riding on conveyor will cause severe injury.  
**KEEP OFF CONVEYORS.**

## DANGER



**DO NOT OPERATE CONVEYORS IN AN EXPLOSIVE ENVIRONMENT.**

## WARNING



Exposed moving parts can cause severe injury.  
**LOCK OUT POWER** before removing guards or performing maintenance.

## WARNING



Gearmotors may be **HOT**.  
**DO NOT TOUCH** Gearmotors.

## WARNING



Exposed moving parts can cause severe injury.  
**REPLACE ALL GUARDS BEFORE RUNNING CONVEYOR.**

## WARNING

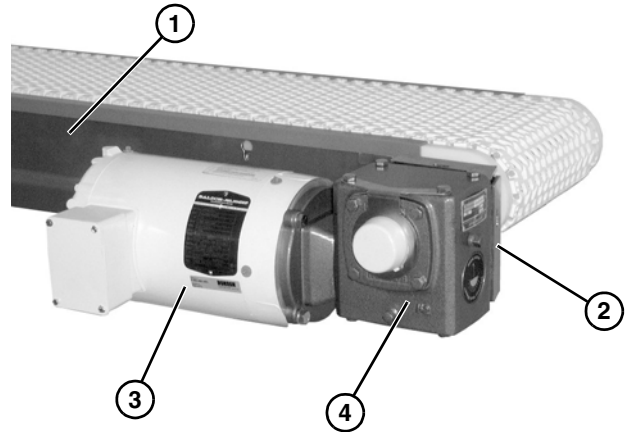


Dorner cannot control the physical installation and application of conveyors. Taking protective measures is the responsibility of the user.  
**When conveyors are used in conjunction with other equipment or as part of a multiple conveyor system, CHECK FOR POTENTIAL PINCH POINTS and other mechanical hazards before system start-up.**

# Product Description

Refer to **(Figure 1)** for typical gearmotor assembly components.

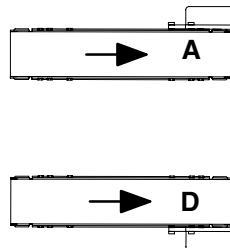
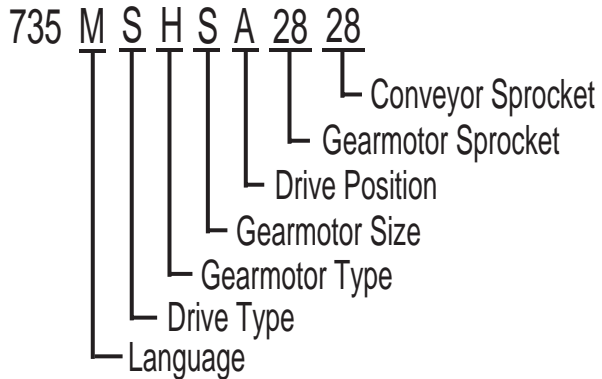
|   |                  |
|---|------------------|
| 1 | Conveyor         |
| 2 | Mounting Bracket |
| 3 | Motor            |
| 4 | Gear Reducer     |



*Figure 1*

# Specifications

## Gearmotor Mounting Package Models:



# Specifications

**Table 1: Gearmotor Specifications**

|                  | Singe Phase  | Three Phase                                       |
|------------------|--|---|
| Output Power     | 0.50 hp (0.37 kW)  | .50 hp (.37 kW) /1 hp (.74 KW) / 1.5 hp (1.11 kW) |
| Input Voltage    | 115 V.A.C.   | 208 - 230 / 460 V.A.C.                            |
| Input Frequency  | 60Hz   | 6 - 60 Hz   |
| Motor RPM        | 22 - 44  | 22 - 233  |
| Gearmotor Ratios | 5:1, 7:1, 10:1, 15:1, 20:1, 30:1, 40:1, 60:1, 80:1   |   |
| Frame Size       | NEMA 56C   |   |
| Motor Type       | Totally Enclosed, Non-ventilated<br>(Except 1.5 hp Stainless Steel Gearmotor = Totally Enclosed, Fan Cooled) |   |

**Table 2: Belt Speeds for Fixed Speed 90° Painted Gearmotors**

| Part Number     | Belt Speed |       | RPM | 1 Phase |      |             | 3 Phase |      |             | in-lbs | N-m  |
|-----------------|------------|-------|-----|---------|------|-------------|---------|------|-------------|--------|------|
|                 | Ft/min     | M/min |     | HP      | Kw   | FLA         | HP      | Kw   | FLA         |        |      |
| 74M080HS4(vp)FN | 22         | 6.7   | 22  | 0.5     | 0.37 | 6.8/3.7-3.4 | 0.5     | 0.37 | 1.6/0.8     | 356    | 40.2 |
| 74M060HS4(vp)FN | 29         | 8.8   | 29  | 0.5     | 0.37 | 6.8/3.7-3.4 | 0.5     | 0.37 | 1.6/0.8     | 442    | 49.9 |
| 74M040HS4(vp)FN | 44         | 13.2  | 44  | 0.5     | 0.37 | 6.8/3.7-3.4 | 0.5     | 0.37 | 1.6/0.8     | 486    | 54.9 |
| 74M030HS4(vp)FN | 58         | 17.7  | 58  | N/A     | N/A  | N/A         | 1       | 0.74 | 3.5-3.2/1.6 | 487    | 55.0 |
| 74M020HS4(vp)FN | 87         | 26.5  | 87  | N/A     | N/A  | N/A         | 1       | 0.74 | 3.5-3.2/1.6 | 407    | 46.0 |
| 74M015HS4(vp)FN | 117        | 35.7  | 117 | N/A     | N/A  | N/A         | 1       | 0.74 | 3.5-3.2/1.6 | 470    | 53.1 |
| 74M010HS4(vp)FN | 175        | 53.3  | 175 | N/A     | N/A  | N/A         | 1.5     | 1.11 | 4.6-4.2/2.1 | 442    | 49.9 |
| 74M007HS4(vp)FN | 233        | 71.0  | 233 | N/A     | N/A  | N/A         | 1.5     | 1.11 | 4.6-4.2/2.1 | 360    | 40.7 |

(vp) = voltage and phase

23 = 0.5 HP – 230/460 V, 3-phase

11 = 115/208-230, 1-phase

1.0 & 1.5 HP – 208-230/460 V, 3-phase

**Table 3: Belt Speeds for Variable Speed 90° Painted Gearmotors**

| Part Number   | Belt Speed |             | RPM | 3 Phase |      |             |             | in-lbs | N-m  |
|---------------|------------|-------------|-----|---------|------|-------------|-------------|--------|------|
|               | Ft/min     | M/min       |     | HP      | Kw   | Volts       | FLA         |        |      |
| 74M080HS423EN | 2 to 22    | 0.6 to 6.7  | 22  | 0.5     | 0.37 | 230/460     | 1.6/0.8     | 356    | 40.2 |
| 74M060HS423EN | 3 to 29    | 0.9 to 8.8  | 29  | 0.5     | 0.37 | 230/460     | 1.6/0.8     | 442    | 49.9 |
| 74M040HS423EN | 5 to 44    | 1.3 to 13.4 | 44  | 0.5     | 0.37 | 230/460     | 1.6/0.8     | 486    | 54.9 |
| 74M030HS423EN | 6 to 58    | 2 to 17.7   | 58  | 1       | 0.74 | 208-230/460 | 3.5-3.2/1.6 | 487    | 55.0 |
| 74M020HS423EN | 9 to 87    | 2.6 to 26.5 | 87  | 1       | 0.74 | 208-230/460 | 3.5-3.2/1.6 | 487    | 55.0 |
| 74M015HS423EN | 12 to 117  | 3.6 to 35.7 | 117 | 1       | 0.74 | 208-230/460 | 3.5-3.2/1.6 | 470    | 53.1 |
| 74M010HS423EN | 18 to 175  | 5.3 to 53.3 | 175 | 1.5     | 1.11 | 208-230/460 | 4.6-4.2/2.1 | 442    | 49.9 |
| 74M007HS423EN | 23 to 233  | 7.1 to 71.0 | 233 | 1.5     | 1.11 | 208-230/460 | 4.6-4.2/2.1 | 360    | 40.7 |

# Specifications

**Table 4: Belt Speeds for Fixed Speed 90° Stainless Gearmotors**

| Part Number    | Belt Speed |       | RPM | 3 Phase |      |             |             | in-lbs | N-m  |
|----------------|------------|-------|-----|---------|------|-------------|-------------|--------|------|
|                | Ft/min     | M/min |     | HP      | Kw   | Volts       | FLA         |        |      |
| 74M080HZS423FN | 22         | 6.7   | 22  | 0.5     | 0.37 | 230/460     | 1.6/0.8     | 356    | 40.2 |
| 74M060HZS423FN | 29         | 8.8   | 29  | 0.5     | 0.37 | 230/460     | 1.6/0.8     | 442    | 49.9 |
| 74M040HZS423FN | 44         | 13.4  | 44  | 0.5     | 0.37 | 230/460     | 1.6/0.8     | 486    | 54.9 |
| 74M030HZS423FN | 58         | 17.7  | 58  | 1       | 0.74 | 208-230/460 | 3.2-3/1.5   | 487    | 55.0 |
| 74M020HZS423FN | 87         | 26.5  | 87  | 1       | 0.74 | 208-230/460 | 3.2-3/1.5   | 407    | 46.0 |
| 74M015HZS423FN | 117        | 35.7  | 117 | 1       | 0.74 | 208-230/460 | 3.2-3/1.5   | 470    | 53.1 |
| 74M010HZS423FN | 175        | 53.3  | 175 | 1.5     | 1.11 | 208-230/460 | 5.8-5.4/2.7 | 442    | 49.9 |
| 74M007HZS423FN | 233        | 71.0  | 233 | 1.5     | 1.11 | 208-230/460 | 5.8-5.4/2.7 | 360    | 40.7 |

**Table 5: Belt Speeds for Variable Speed 90° Stainless Gearmotors**

| Part Number    | Belt Speed |             | RPM | 3 Phase |      |             |             | in-lbs | N-m  |
|----------------|------------|-------------|-----|---------|------|-------------|-------------|--------|------|
|                | Ft/min     | M/min       |     | HP      | Kw   | Volts       | FLA         |        |      |
| 74M080HZS423EN | 2 to 22    | 0.6 to 6.7  | 22  | 0.5     | 0.37 | 230/460     | 1.6/0.8     | 356    | 40.2 |
| 74M060HZS423EN | 3 to 29    | 0.9 to 8.8  | 29  | 0.5     | 0.37 | 230/460     | 1.6/0.8     | 442    | 49.9 |
| 74M040HZS423EN | 5 to 44    | 1.3 to 13.4 | 44  | 0.5     | 0.37 | 230/460     | 1.6/0.8     | 486    | 54.9 |
| 74M030HZS423EN | 6 to 58    | 2 to 17.7   | 58  | 1       | 0.74 | 208-230/460 | 3.2-3/1.5   | 487    | 55.0 |
| 74M020HZS423EN | 9 to 87    | 2.6 to 26.5 | 87  | 1       | 0.74 | 208-230/460 | 3.2-3/1.5   | 487    | 55.0 |
| 74M015HZS423EN | 12 to 117  | 3.6 to 35.7 | 117 | 1       | 0.74 | 208-230/460 | 3.2-3/1.5   | 470    | 53.1 |
| 74M010HZS423EN | 18 to 175  | 5.3 to 53.3 | 175 | 1.5     | 1.11 | 208-230/460 | 5.3-5.4/2.7 | 442    | 49.9 |
| 74M007HZS423EN | 23 to 233  | 7.1 to 71.0 | 233 | 1.5     | 1.11 | 208-230/460 | 5.3-5.4/2.7 | 360    | 40.7 |



**NOTE**

*For belt speed other than those listed, contact factory for details.*

## Required Tools

- 5/16" wrench
- 4 mm wrench
- 13 mm wrench
- 14 mm wrench
- Large flat head screwdriver
- Torque wrench

## Side Drive Package

|  |
|--|
| <b>⚠ WARNING</b>   |
|   |
| <b>SEVERE HAZARD!</b><br>LOCK OUT POWER before removing guards or performing maintenance. Exposed moving parts can cause serious injury. |
| <b>⚠ WARNING</b>   |
|   |
| <b>PUNCTURE HAZARD!</b><br>Handle drive shaft keyway with care. It may be sharp and could puncture the skin, causing serious injury.     |
| <b>NOTE</b>  |
| <i>Gearmotor may be operated in positions 1 or 3 (Figure 2).</i>   |

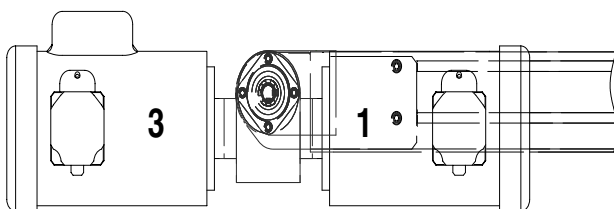


Figure 2

Typical Side Drive Package Components (Figure 3).

|   |  |
|---|--|
| 1 | Cover                                  |
| 2 | Hex Head Cap Screw 5/16-18 x .75" (x2) |
| 3 | Hex Head Cap Screw 5/16-18 x .50" (x2) |
| 4 | Cover Bracket                          |
| 5 | Support Arm                            |
| 6 | Mounting Bracket                       |
| 7 | Hex Head Cap Screw M8-1.25 x 40 mm     |
| 8 | Gearmotor Assembly                     |

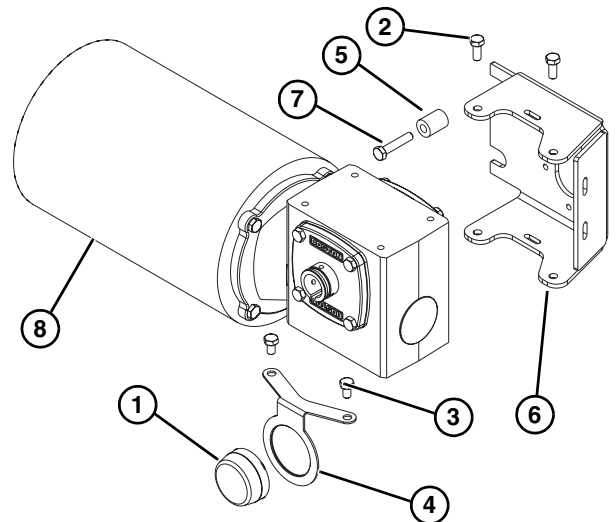


Figure 3

1. On each side of conveyor, remove upper front head plate mounting screw and install spacer (Figure 4, item 1) with longer screw (Figure 4, item 2).

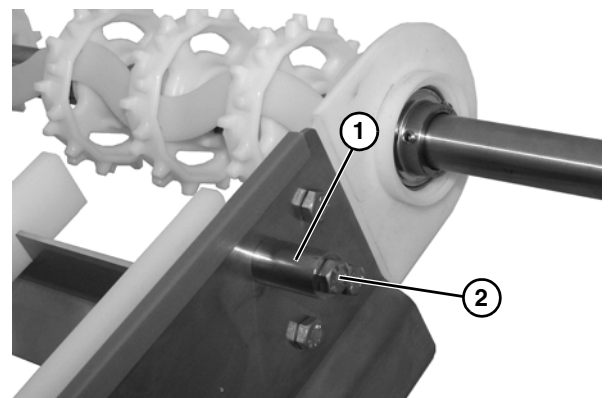


Figure 4

# Installation

2. Install guard (Figure 5, item 1) onto gear reducer (Figure 5, item 2) with screws.

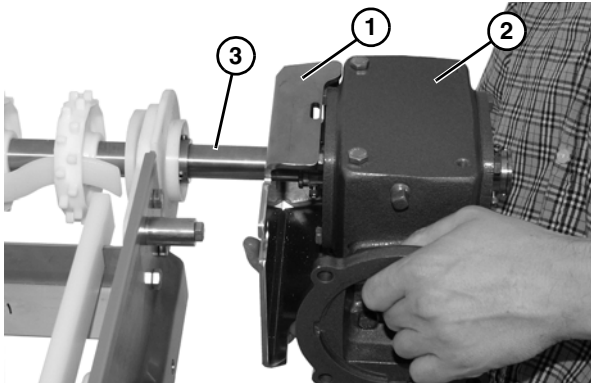


Figure 5

3. Install key onto conveyor shaft (Figure 5, item 3), and slide gear reducer assembly onto shaft.
4. Slide gear reducer guard (Figure 6, item 1) onto spacer (Figure 6, item 2) on conveyor, and tighten set screws on both bearings (Figure 6, item 3) with a hex key wrench (Figure 6, item 4).

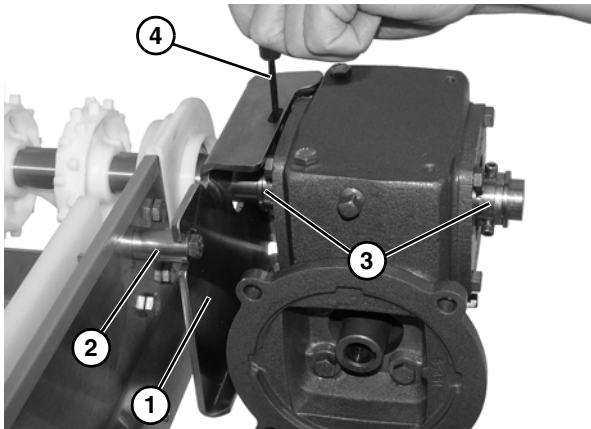


Figure 6

5. Install gear reducer output shaft cover (Figure 7, item 1).

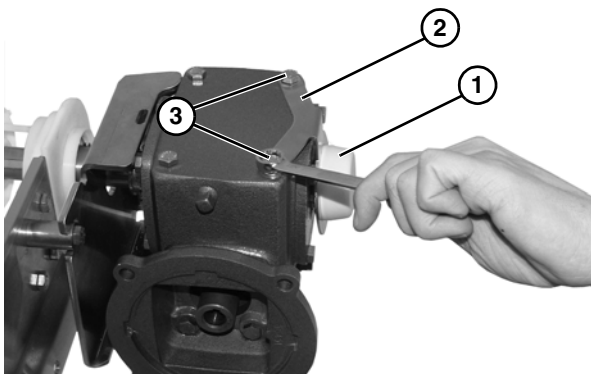


Figure 7

6. Install cover bracket (Figure 7, item 2) onto gear reducer with screws (Figure 7, item 3).

## IMPORTANT

*Be extremely careful when coupling motor to gear reducer. Avoid misalignment and forcing the connection causing possible permanent gear reducer seal damage.*

7. Install shaft key (Figure 8, item 1) onto motor shaft (Figure 8, item 2), and install motor (Figure 8, item 3) onto gear reducer (Figure 8, item 4).

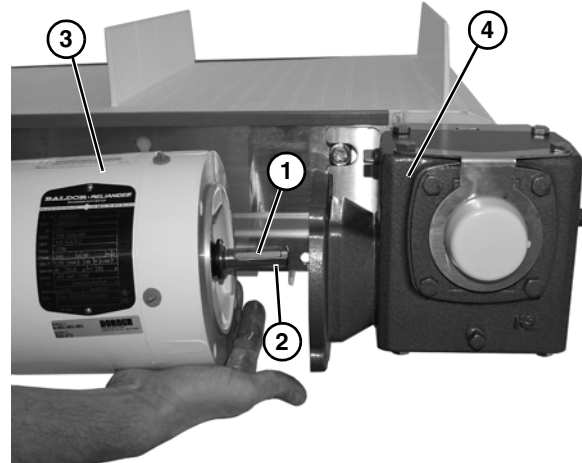


Figure 8

8. Secure motor (Figure 9, item 1) to gear reducer (Figure 9, item 2), with four bolts (Figure 9, item 3).

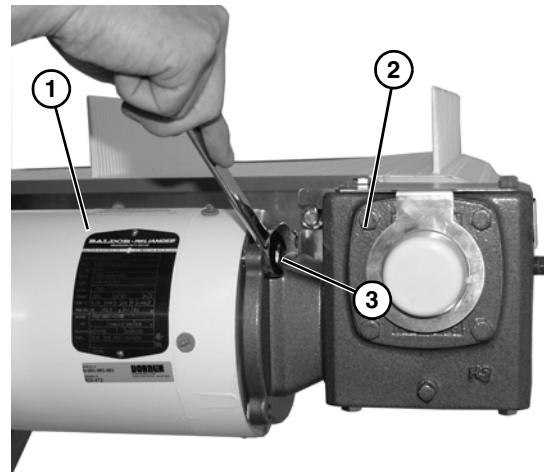


Figure 9

9. Tighten four bolts (Figure 9, item 3) to 65 in-lbs (7.3 N-m).



# Preventive Maintenance and Adjustment

## Required Tools

- 5/16" wrench
- 4 mm wrench
- 13 mm wrench
- 14 mm wrench
- Large flat head screwdriver
- Torque wrench

## Check List

- Keep service parts on hand. Refer to "Service Parts" on page 13 for recommendations.
- Replace any worn or damaged parts.

## Gear Reducer Replacement

|  |
|--|
| <b>⚠ WARNING</b>   |
|   |
| <b>SEVERE HAZARD!</b><br>LOCK OUT POWER before removing guards or performing maintenance. Exposed moving parts can cause serious injury. |

|  |
|--|
| <b>⚠ WARNING</b>   |
|   |
| <b>BURN HAZARD!</b><br>DO NOT TOUCH the motor while operating, or shortly after being turned off. Motors may be HOT and can cause serious burn injuries. |

1. Remove four bolts (Figure 10, item 1) securing motor (Figure 10, item 2) to gear reducer (Figure 10, item 3).

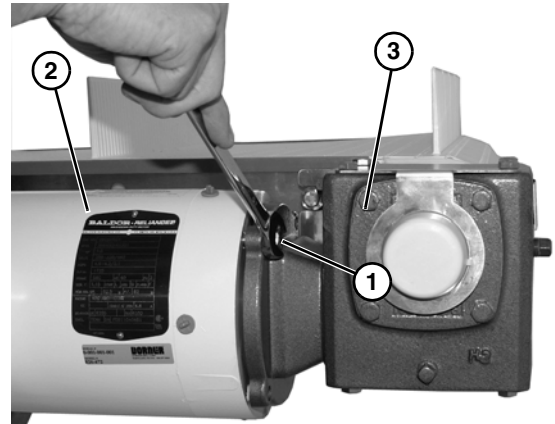



Figure 10

|  |
|--|
| <b>⚠ WARNING</b>   |
|   |
| <b>CRUSH HAZARD!</b> <ul style="list-style-type: none"><li>• SUPPORT MOTOR PRIOR TO LOOSENING THE BOLTS</li><li>• Loosening motor bolts may cause it to drop down, causing serious injury.</li></ul> |

2. Slide motor (Figure 11, item 1) off of gear reducer (Figure 11, item 2), and remove shaft key (Figure 11, item 3) from motor shaft (Figure 11, item 4).

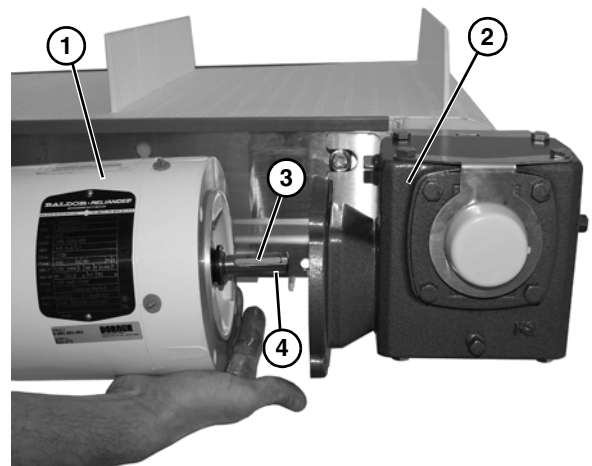
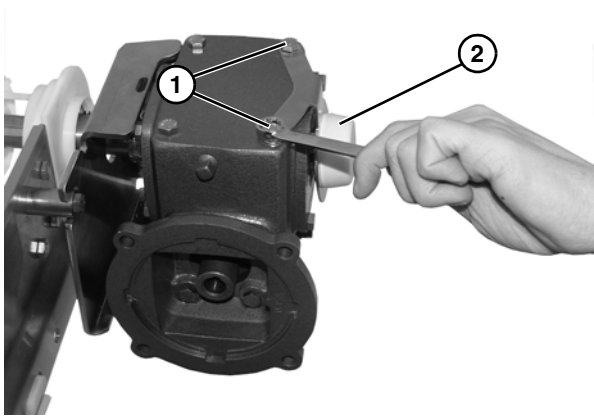


Figure 11

|  |
|--|
| <b>NOTE</b>  |
| <i>Be sure to retain the motor output shaft key.</i> |

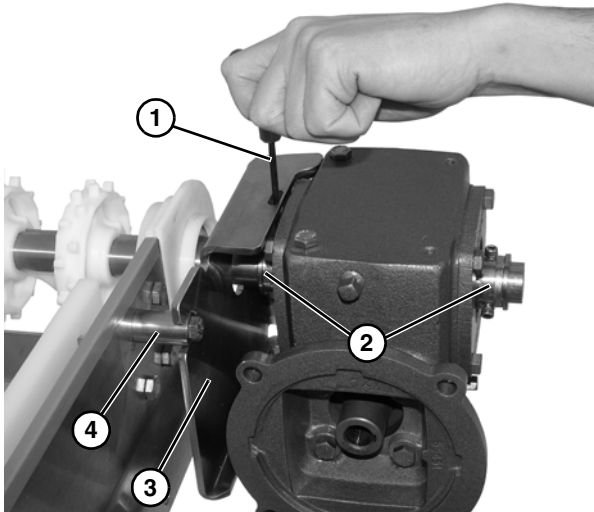
# Preventive Maintenance and Adjustment

3. Remove two screws (**Figure 12, item 1**) and gear reducer output shaft cover and bracket (**Figure 12, item 2**).



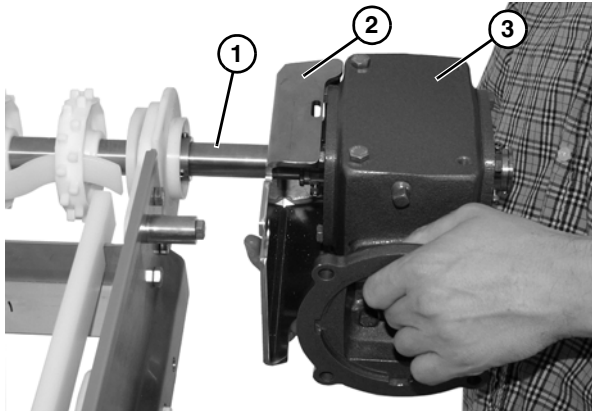
**Figure 12**

4. Use a hex key wrench (**Figure 13, item 1**) to remove set screws on both bearings (**Figure 13, item 2**). Slide gear reducer and mounting bracket (**Figure 13, item 3**) from spacer (**Figure 13, item 4**) on conveyor.



**Figure 13**

5. Remove gear reducer assembly from conveyor shaft (**Figure 14, item 1**), making sure to not lose key on conveyor shaft.



**Figure 14**

6. Remove screws and mounting bracket (**Figure 14, item 2**) from gear reducer (**Figure 14, item 3**).
7. To install components, complete steps 3 through 9 of "Side Drive Package" on page 7.

# Preventive Maintenance and Adjustment

## Motor Replacement

**⚠ WARNING**



**SEVERE HAZARD!**  
LOCK OUT POWER before removing guards or performing maintenance. Exposed moving parts can cause serious injury.

**⚠ WARNING**



**BURN HAZARD!**  
DO NOT TOUCH the motor while operating, or shortly after being turned off. Motors may be HOT and can cause serious burn injuries.

**⚠ DANGER**



**ELECTRICAL HAZARD!**  
LOCK OUT POWER BEFORE WIRING.  
Exposure to high voltage current can cause death or serious injury.

1. Loosen terminal box screws (Figure 15, item 1) and remove cover (Figure 15, item 2).

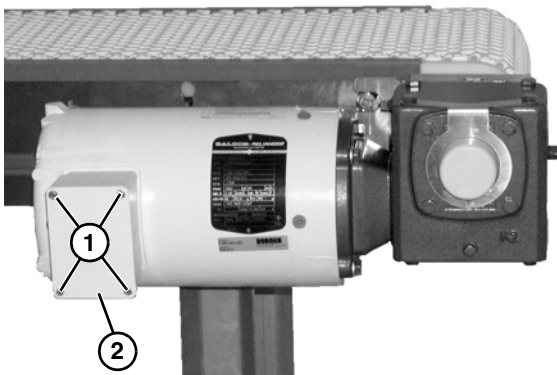


Figure 15

2. Refer to the wiring diagram (Figure 16, item 1) on the inside of the junction box cover.

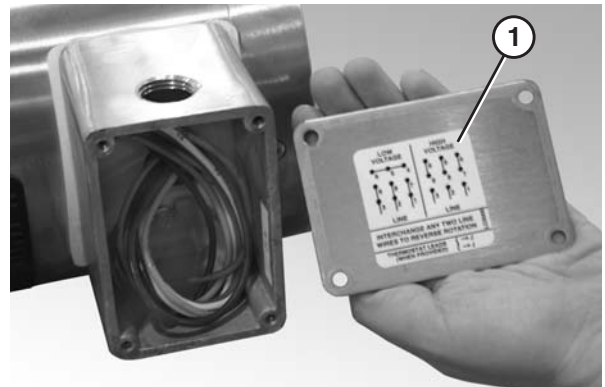



Figure 16

3. Loosen the wire nuts and disconnect the wires.
4. Loosen the cord grip and remove the cord.

**⚠ WARNING**



**CRUSH HAZARD!**

- SUPPORT MOTOR PRIOR TO LOOSENING THE BOLTS
- Loosening motor bolts may cause it to drop down, causing serious injury.

5. Remove four bolts (Figure 17, item 1) securing motor (Figure 17, item 2) to gear reducer (Figure 17, item 3).

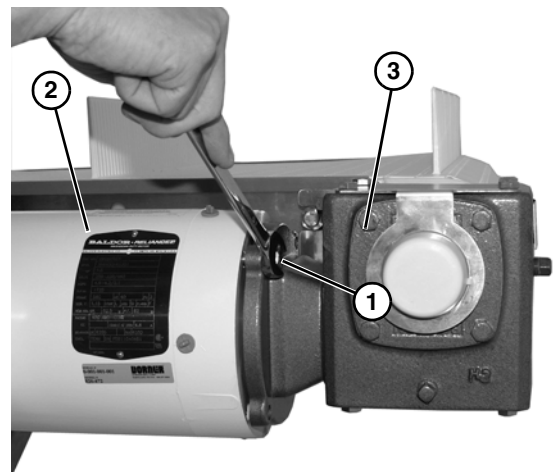


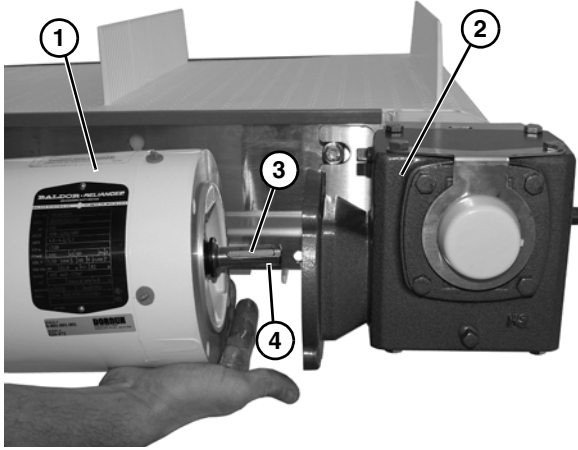
Figure 17

---

# Preventive Maintenance and Adjustment

---

- Slide motor (**Figure 18, item 1**) off of gear reducer (**Figure 18, item 2**), and remove shaft key (**Figure 18, item 3**) from motor shaft (**Figure 18, item 4**).

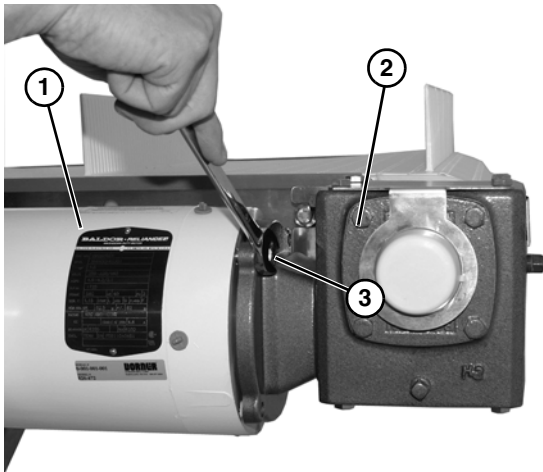


**Figure 18**

|             |
|-------------|
| <b>NOTE</b> |
|-------------|

|  |
|--|
| <i>Be sure to retain the motor output shaft key.</i> |
|--|

- With key (**Figure 18, item 3**) in keyway on motor shaft (**Figure 18, item 4**), slide new motor (**Figure 18, item 1**) and gear reducer (**Figure 18, item 2**) together.
- Secure motor (**Figure 19, item 1**) to gear reducer (**Figure 19, item 2**), with four bolts (**Figure 19, item 3**).




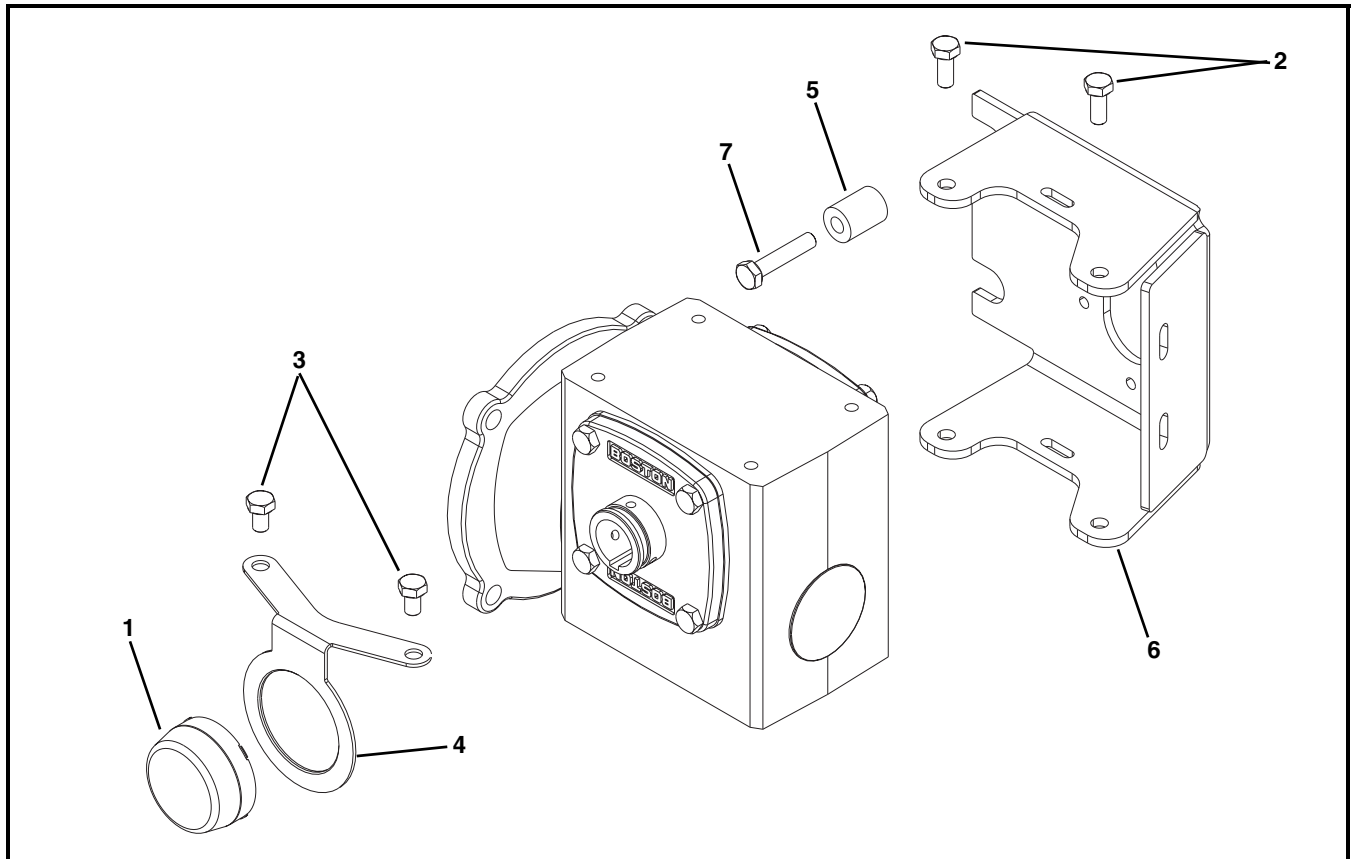
**Figure 19**

- Tighten four bolts (**Figure 19, item 3**) to 65 in-lbs (7.3 N-m).
- Rewire the motor and attach the box cover.

## Side Mount Drive Package for 90° Industrial Gearmotors

### NOTE

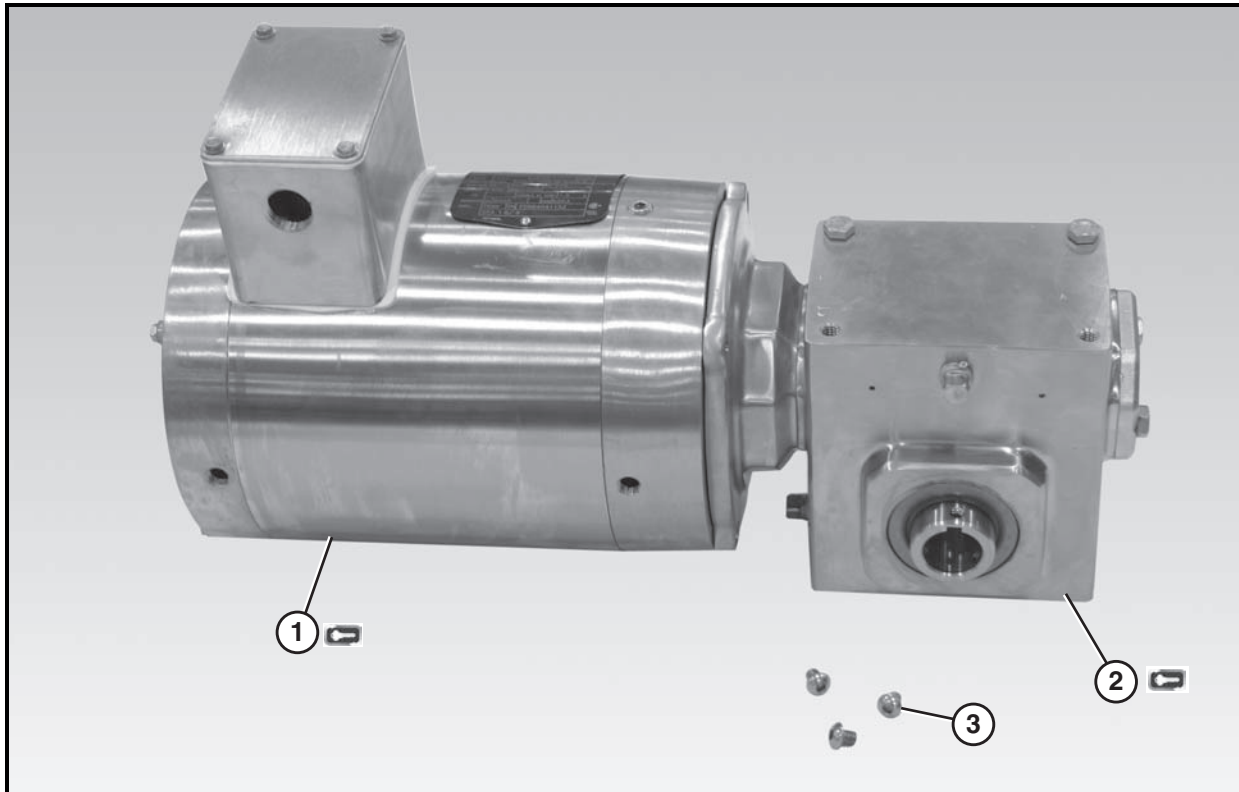
For replacement parts other than those shown in this section, contact an authorized Dorner Service Center or the factory. Key Service Parts and Kits are identified by the Performance Parts Kits logo . Dorner recommends keeping these parts on hand.



| Item | Part Number | Description                        |
|------|-------------|------------------------------------|
| 1    | 807-1454    | Cover                              |
| 2    | 906-061SS   | Hex Head Cap Screw 5/16-18 x .75"  |
| 3    | 906-067SS   | Hex Head Cap Screw 5/16-18 x .50"  |
| 4    | 500492      | Cover Bracket                      |
| 5    | 532146      | Support Arm                        |
| 6    | 532148      | Mounting Bracket                   |
| 7    | 960840MSS   | Hex Head Cap Screw M8-1.25 x 40 mm |

# Service Parts

## Gearmotor Assembly



| Item | Part Number | Description   |
|------|-------------|---|
| 1    | 62MZ411     | Painted Motor, 0.50 Hp (0.37Kw) 115 Volts, 60Hz, 1 Phase                      |
|      | 62MZ423     | Painted Motor, 0.50 Hp (0.37Kw) 208-230/460 Volts, 6 to 60Hz, 3 Phase         |
|      | 74MHS423-10 | Painted Motor, 1.00 Hp (0.74Kw) 208-230/460 Volts, 6 to 60Hz, 3 Phase         |
|      | 74MHS423-15 | Painted Motor, 1.50 Hp (1.11Kw) 208-230/460 Volts, 6 to 60Hz, 3 Phase         |
|      | 62MZS423    | Stainless Steel Motor, 0.50 Hp (0.37Kw) 208-230/460 Volts, 6 to 60Hz, 3 Phase |
|      | 74MZS423-10 | Stainless Steel Motor, 1.00 Hp (0.74Kw) 208-230/460 Volts, 6 to 60Hz, 3 Phase |
|      | 74MZS423-15 | Stainless Steel Motor, 1.50 Hp (1.11Kw) 208-230/460 Volts, 6 to 60Hz, 3 Phase |

| Item     | Part Number                             | Description  |
|----------|---|--|
| 2        | 74M005HS                                | Painted Gear Reducer, 5:1, 56C   |
|          | 74M007HS                                | Painted Gear Reducer, 7:1, 56C   |
|          | 74M010HS                                | Painted Gear Reducer, 10:1, 56C  |
|          | 74M015HS                                | Painted Gear Reducer, 15:1, 56C  |
|          | 74M020HS                                | Painted Gear Reducer, 20:1, 56C  |
|          | 74M030HS                                | Painted Gear Reducer, 30:1, 56C  |
|          | 74M040HS                                | Painted Gear Reducer, 40:1, 56C  |
|          | 74M060HS                                | Painted Gear Reducer, 60:1, 56C  |
|          | 74M080HS                                | Painted Gear Reducer, 80:1, 56C  |
|          | 74M005HZ                                | Stainless Steel Gear Reducer, 5:1, 56C   |
|          | 74M007HZ                                | Stainless Steel Gear Reducer, 7:1, 56C   |
|          | 74M010HZ                                | Stainless Steel Gear Reducer, 10:1, 56C  |
|          | 74M015HZ                                | Stainless Steel Gear Reducer, 15:1, 56C  |
|          | 74M020HZ                                | Stainless Steel Gear Reducer, 20:1, 56C  |
| 74M030HZ | Stainless Steel Gear Reducer, 30:1, 56C |  |
| 74M040HZ | Stainless Steel Gear Reducer, 40:1, 56C |  |
| 74M060HZ | Stainless Steel Gear Reducer, 60:1, 56C |  |
| 74M080HZ | Stainless Steel Gear Reducer, 80:1, 56C |  |
| 3        | 917-104                                 | Stainless Steel Socket Head Cap Screw 10-32 x .25 for Painted Gearmotor          |
|          | 916-126                                 | Stainless Steel Button Head Cap Screw 1/4-20 x .31 for Stainless Steel Gearmotor |



# Return Policy

Returns must have prior written factory authorization or they will not be accepted. Items that are returned to Dorner without authorization will not be credited nor returned to the original sender. When calling for authorization, please have the following information ready for the Dorner factory representative or your local distributor:

1. Name and address of customer.
2. Dorner part number(s) of item(s) being returned.
3. Reason for return.
4. Customer's original order number used when ordering the item(s).
5. Dorner or distributor invoice number (if available, part serial number).

A representative will discuss action to be taken on the returned items and provide a Returned Goods Authorization (RMA) number for reference. RMA will automatically close 30 days after being issued. To get credit, items must be new and undamaged. There will be a return charge on all items returned for credit, where Dorner was not at fault. It is the customer's responsibility to prevent damage during return shipping. Damaged or modified items will not be accepted. The customer is responsible for return freight.

## Conveyors and conveyor accessories

|  |                      |
|--|----------------------|
| Standard catalog conveyors                         | 30%                  |
| MPB, 7200, 7300 Series, cleated and specialty belt | 50%                  |
| AquaGard & AquaPruf Series conveyors               | non-returnable items |
| Engineered special products                        | case by case         |
| Drives and accessories                             | 30%                  |
| Sanitary stand supports                            | non-returnable items |

## Parts

|  |                      |
|--|----------------------|
| Standard stock parts                       | 30%                  |
| Plastic chain, cleated and specialty belts | non-returnable items |

Returns will not be accepted after 60 days from original invoice date. The return charge covers inspection, cleaning, disassembly, disposal and reissuing of components to inventory. If a replacement is needed prior to evaluation of returned item, a purchase order must be issued. Credit (if any) is issued only after return and evaluation is complete.

Dorner has representatives throughout the world. Contact Dorner for the name of your local representative. Our Customer Service Teams will gladly help with your questions on Dorner products.

For a copy of Dorner's Warranty, contact factory, distributor, service center or visit our website at [www.dorner.com](http://www.dorner.com).

For replacement parts, contact an authorized Dorner Service Center or the factory.



Dorner Mfg. Corp. reserves the right to change or discontinue products without notice. All products and services are covered in accordance with our standard warranty. All rights reserved. © Dorner Mfg. Corp. 2009

## DORNER MFG. CORP.

975 Cottonwood Ave., PO Box 20  
Hartland, WI 53029-0020 USA  
TEL 1-800-397-8664 (USA)  
FAX 1-800-369-2440 (USA)  
Internet: [www.dorner.com](http://www.dorner.com)

Outside the USA:  
TEL 1-262-367-7600  
FAX 1-262-367-5827