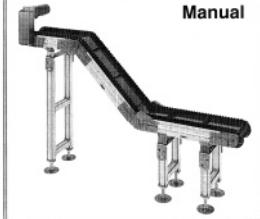


Supplement

DORNER
LPZ Standard & Sidewall
Cleated Belt Conveyors

Parts, Assembly
& Maintenance
Manual



LPZ Return Roller Assemblies

Supplement to LPZ Conveyors Parts, Assembly & Maintenance Manual (Publication 851-158)

Hardware Illustration References

- A M8 x 20 Button Head Cap Screw (2x)
- B M6 x 18 Socket Head Cap Screw & Hard Washer (4x)

LPZ Flat Belt Conveyors

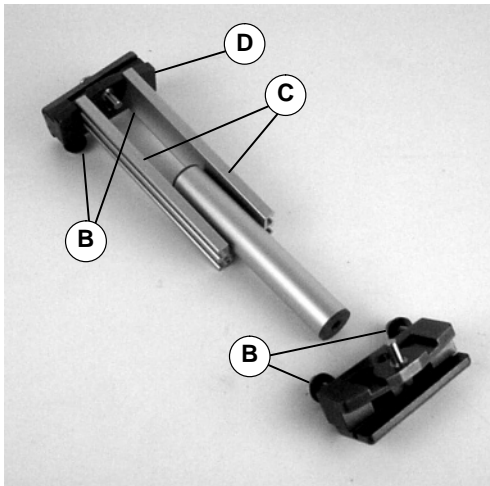


Figure 1

1. Typical Components (Figure 1)

NOTE: Roller Guards (C) are shipped fastened to block (D) only. Do NOT fasten to other block.

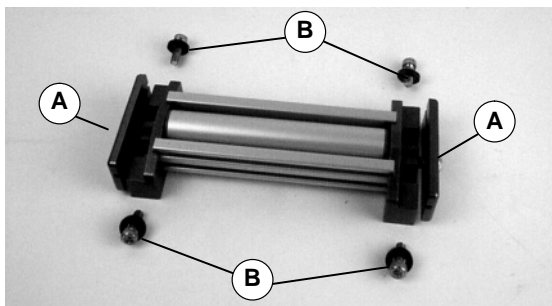


Figure 2

2. Assemble components as shown (Figure 2). Loosen (but do not remove) screws (A) and remove screws and washers (B).

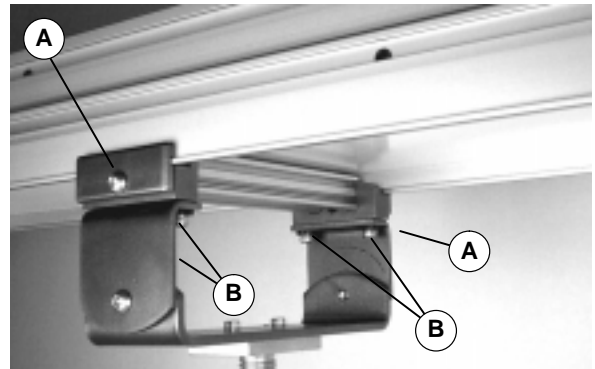
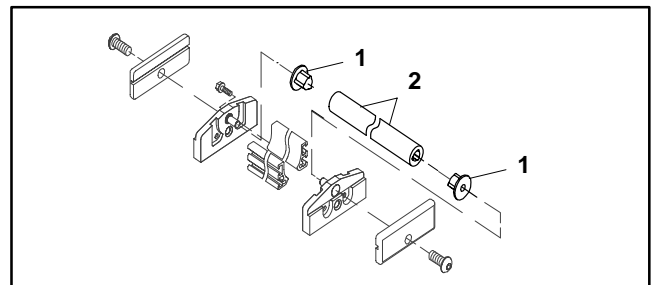


Figure 3

3. Attach clamp plates on each side of conveyor (Figure 3). Align assembly perpendicular to conveyor or frame. Secure the M8 button head screws (A) with 80 in-lb (9 Nm) torque.
4. Mount to support stand. Secure the M6 socket head screws (B) with 80 in-lb (9 Nm) torque. Make sure belt is free to move.

Replacement Parts



Item	Part No.	Part Description
1	202311P	Return Roller Bearing
2	2077WW	Return Roller Tube

WW (conveyor width reference)

LPZ Cleated Belt Conveyors

Hardware Illustration References

- E M8 x 30 Button Head Cap Screw (2x)
 F M6 x 20 Socket Head Cap Screw & Hard Washer (4x)

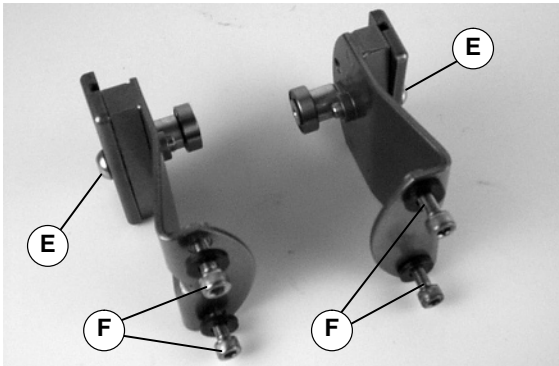


Figure 4

1. Typical Components (Figure 4)

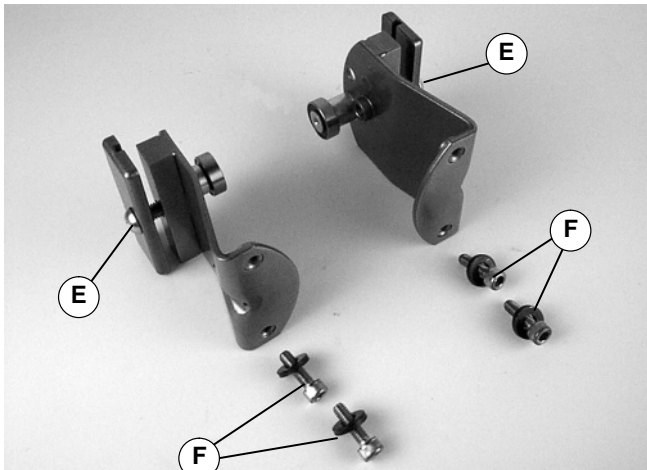


Figure 5

2. Loosen (but do not remove) screws (E) and remove screws and washers (F) (Figure 5).

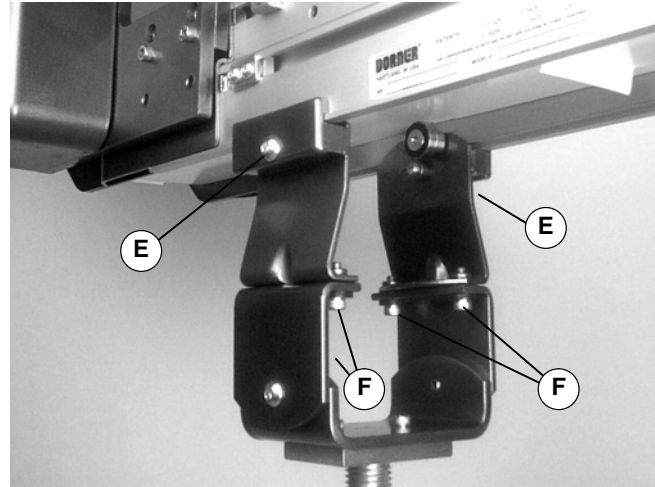
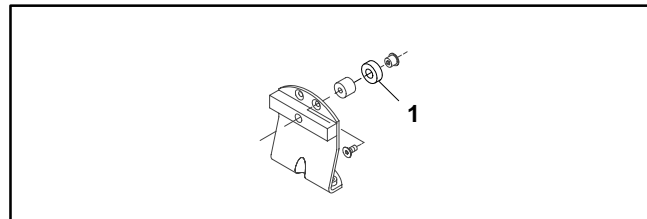


Figure 6

3. Attach clamp plates on each side of conveyor (Figure 6). Secure the M8 button head screws (E) with 80 in-lb (9 Nm) torque.

4. Mount to support stand. Secure the M6 socket head screws (F) with 80 in-lb (9 Nm) torque. Make sure belt is free to move.

Replacement Parts



Item	Part No.	Part Description
1	802-027	Sealed Ball Bearing

Please keep this sheet with your LPZ Conveyor Parts, Assembly & Maintenance Manual for future reference.

For replacement parts, contact an authorized
 Dorner Service Center or the factory.

DORNER[®]

Dorner Mfg. Corp. reserves the right to change or discontinue products without notice. All products and services are covered in accordance with our standard warranty. All rights reserved. ©Dorner Mfg. Corp. 1999

DORNER MFG. CORP.

580 Industrial Drive, PO Box 20
 Hartland, WI 53029-0020 USA
USA
TEL 1-800-397-8664 (USA)
FAX 1-800-369-2440 (USA)
 Outside the USA:
 TEL 1-414-367-7600, FAX 1-414-367-5827

DORNER

Arnold-Sommerfeld-Ring 2
 D-52499 Baesweiler
Germany
TEL (02401) 80 52 90
FAX (02401) 80 52 93

Internet: www.dorner.com