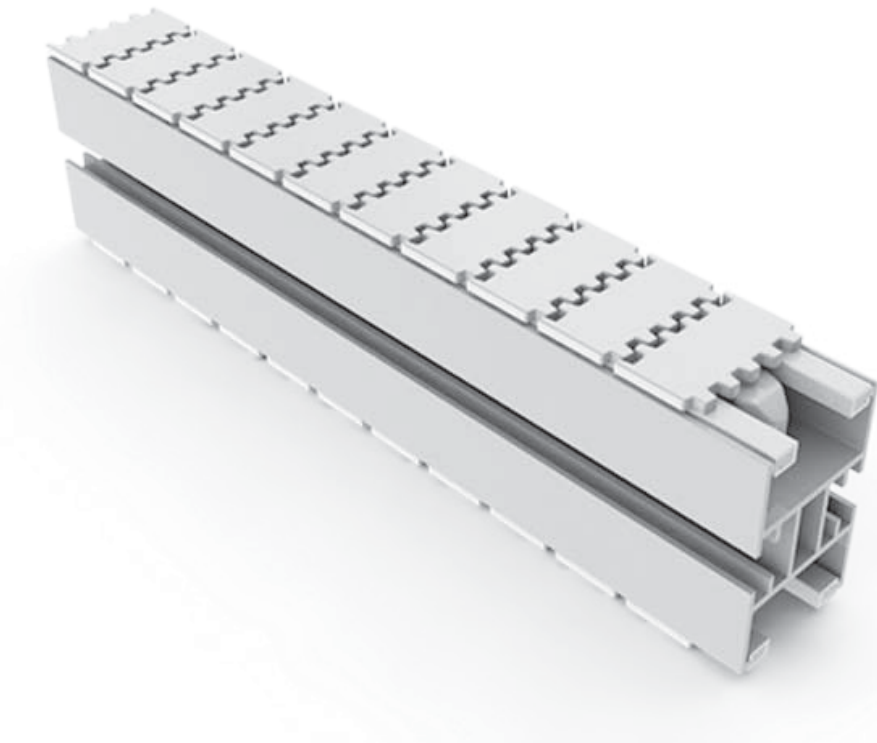


FK
44mm
Conveyor
System

FK



FK SERIES

FK Series is a compact and neat design for small items and fast transportation. It is also used for twin track application for pallet assembly line.

FK Series Characteristic

Beam Width: 45mm

Product Width: Refer to Guide Rail Assembly

Accessories Needed

Slide Rail Required: FASR-25K OR FASR-25KU

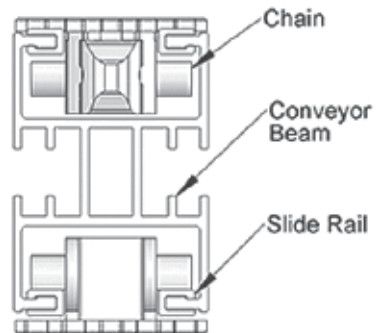
Slide Rail Colour: White Or Natural Colour

Slide Rail Material: HDPE OR UHMW-PE

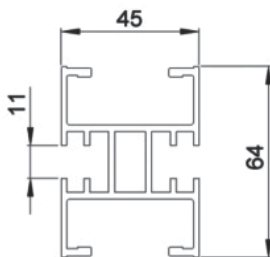
Slide Rail Rivet: FASLS-M3

Connecting strip is used to connect 2 beams.

Connecting Strip: FACS-20x140

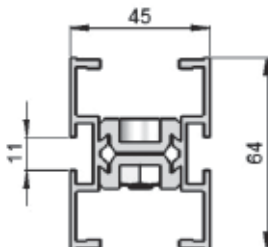


Conveyor Beam FKCB-3

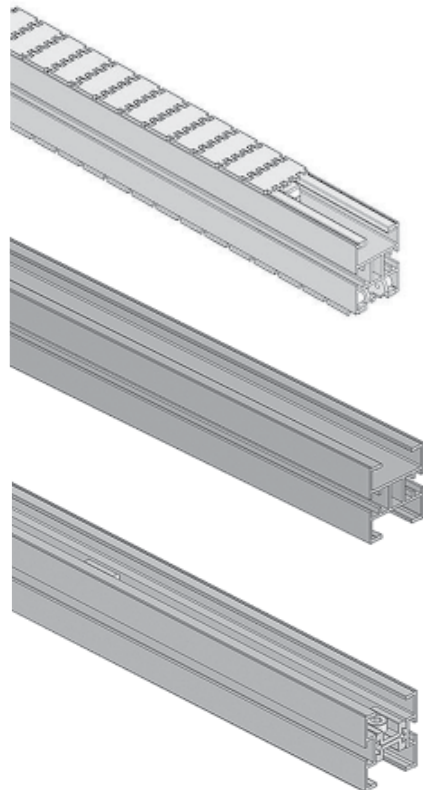


UOM: 3 Meter / Length

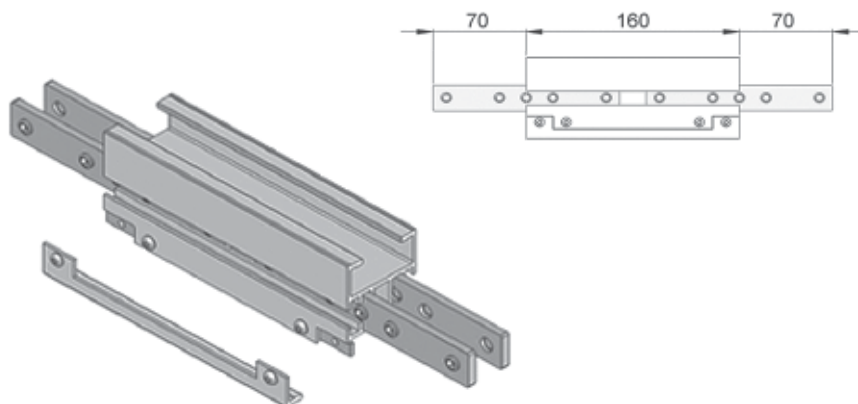
Conveyor Half Beam FKCB-3H



UOM: 3 Meter / Length



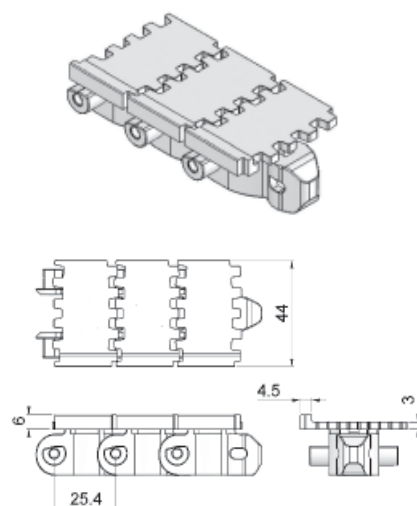
Chain Connecting Module FKCC-160



UOM: pc

FK

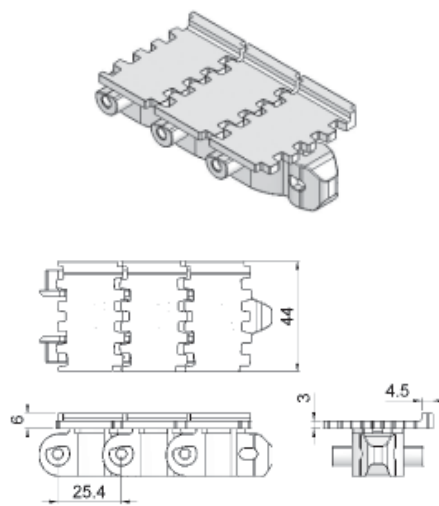
Wedge Top Chain Right FKWT-5PR



UOM: 5 Meter / box

Application: Suitable for PET bottle transport.

Wedge Top Chain Left FKWT-5PL



UOM: 5 Meter / box

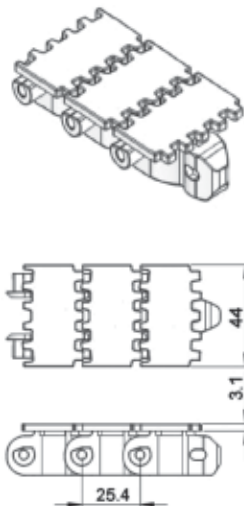
Application: Suitable for PET bottle transport.

FK SERIES

Chain Common Data

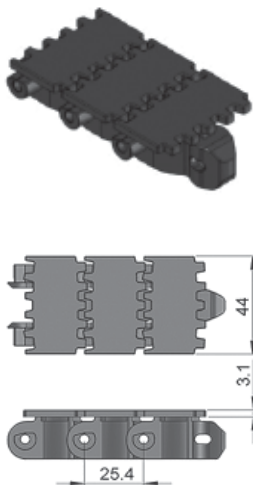
Packaging: 5m per box
Pitch: 25.4mm
Width: 44mm
Tensile Strength at 20°C: 4000N
Colour: White & Black (Conductive)
Material :-
Chain: White Acetal / POM
Pivot: Polyamide
Pivot Pin: Stainless Steel
Insert (Wedge & Friction): TPE Grey

Standard Plain Chain **FKPC-5**



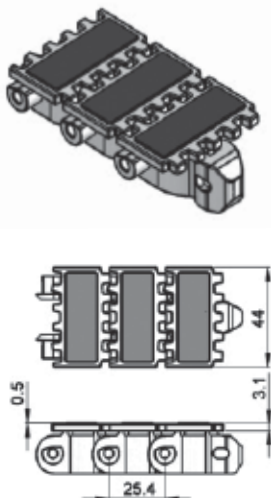
UOM: 5 Meter / box
Application: Suitable for horizontal and slope < 5° transport of products with accumulation.

Conductive Chain **FKPC-5CD**



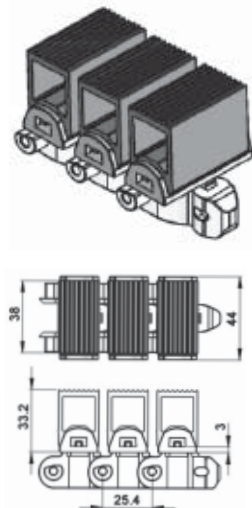
UOM: 5 Meter / box
Application: Suitable for transport of static sensitive product.

Friction Top Chain **FKFT-5**



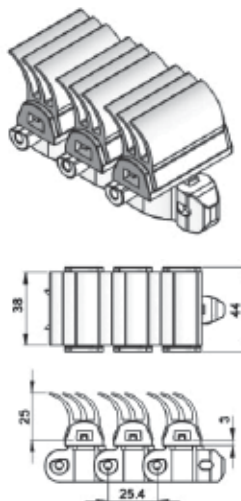
UOM: 5 Meter / box
Application: Suitable for transport product in slope > 5° but ≤ 30° without accumulation.

Wedge Top Chain **FKWT-5C**



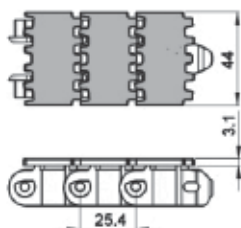
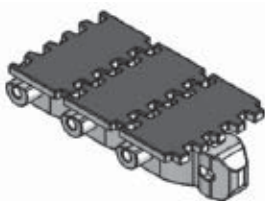
UOM: 5 Meter / box
Application: Vertical Wedge transportation of products.

Wedge Top Chain **FKWT-5D**



UOM: 5 Meter / box
Application: Vertical Wedge transportation of products.

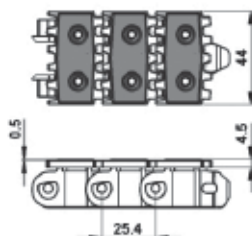
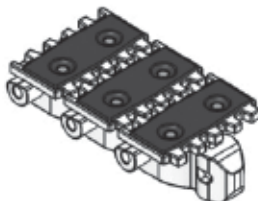
Flocked Chain **FKFK-5**



UOM: 5 Meter / box

Application: Suitable to transport light weight, fragile and scratch sensitive product.

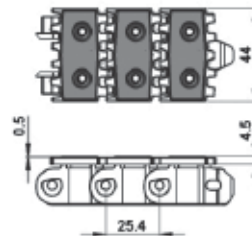
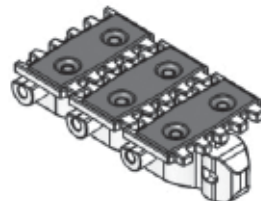
Hardened Steel Top Chain **FKST-5**



UOM: 5 Meter / box

Application: Suitable to transport metal products in accumulation.

S/steel Top Chain **FKST-5S**

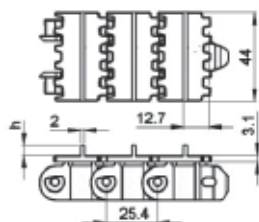
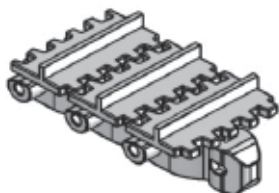


UOM: 5 Meter / box

Application: Suitable to transport metal products in accumulation.

FK

Cleat Top Chain-G **FKCT-5G-h-L#**



h = 3
h = 5
h = 9

UOM: 5 Meter / box

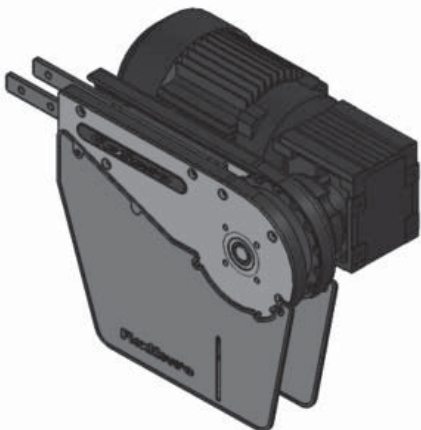
Application: Suitable for vertical transport of product with no accumulation.



FK SERIES

FK Direct End Drive with Motor (LEFT)

FKDD-320-0.25L1, 0.37L1, 0.55L1



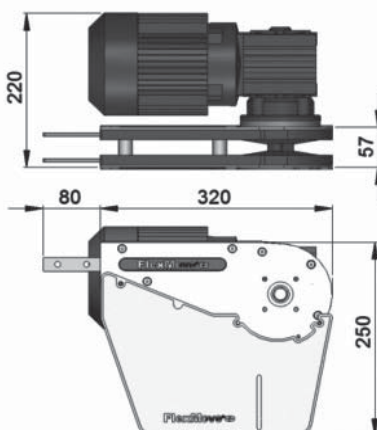
Max Traction Force : 500N

The Direct End Drive Unit is without torque limiter. Standard attached gear motors are with SEW motor size 0.25kW, 0.37kW & 0.55kW. FKDD-320-0L1 represents direct drive without motor. Multi channel drives are available upon request.

UOM: pc Chain required 2-way: 0.8 meter Slide rail required 2-way: 0.5 meter

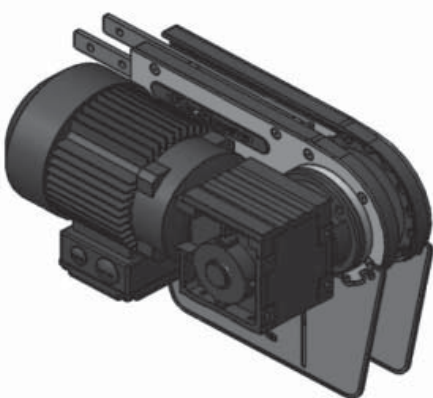
FK Direct End Drive without Motor (LEFT)

FKDD-320-0L1



FK Direct End Drive with Motor (RIGHT)

FKDD-320-0.25R1, 0.37R1, 0.55R1



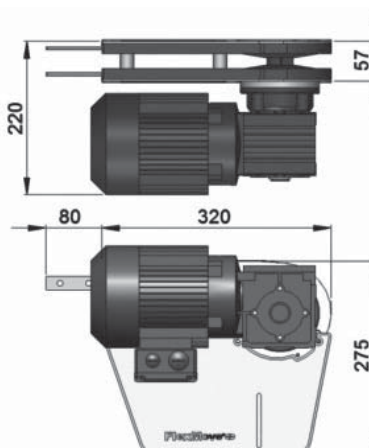
Max Traction Force : 500N

The Direct End Drive Unit is without torque limiter. Standard attached gear motors are with SEW motor size 0.25kW, 0.37kW & 0.55kW. FKDD-320-0R1 represents direct drive without motor. Multi channel drives are available upon request.

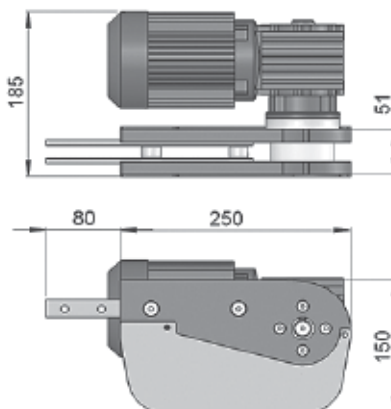
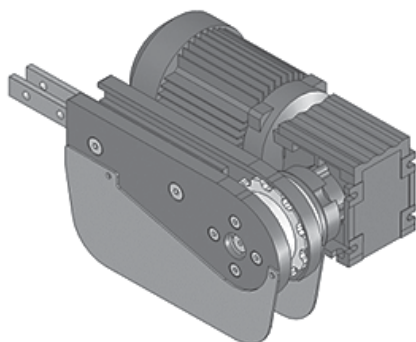
UOM: pc Chain required 2-way: 0.8 meter Slide rail required 2-way: 0.5 meter

FK Direct End Drive without Motor (RIGHT)

FKDD-320-0R1

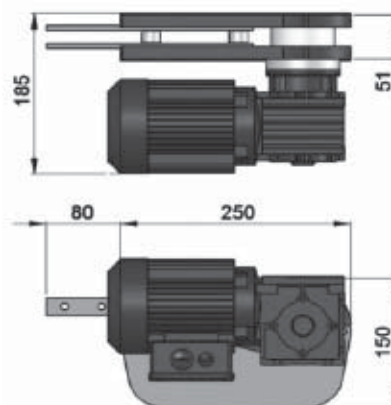
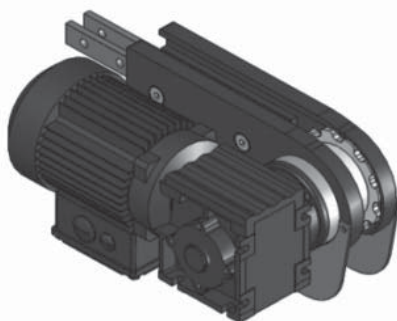


SEW gear motors are products of SEW Eurodrive

FK Direct End Drive with Motor (LEFT)
FKDD-250-0.25L, 0.37L, 0.55L
FK Direct End Drive without Motor (LEFT)
FKDD-250-0L

Max Traction Force : 400N

The Direct End Drive Unit is without torque limiter. Standard attached gear motors are with SEW motor size is 0.12kW. FKDD-250-0L represents direct drive without gear motor. Multi channel drives are available upon request.

UOM: pc Chain required 2-way: 0.55 meter Slide rail required 2-way: 0

FK Direct End Drive with Motor (RIGHT)
FKDD-250-0.25R, 0.37R, 0.55R
FK Direct End Drive without Motor (RIGHT)
FKDD-250-0R

Max Traction Force : 400N

The Direct End Drive Unit is without torque limiter. Standard attached gear motors are with SEW motor size is 0.12kW. FKDD-250-0R represents direct drive without gear motor. Multi channel drives are available upon request.

UOM: pc Chain required 2-way: 0.55 meter Slide rail required 2-way: 0

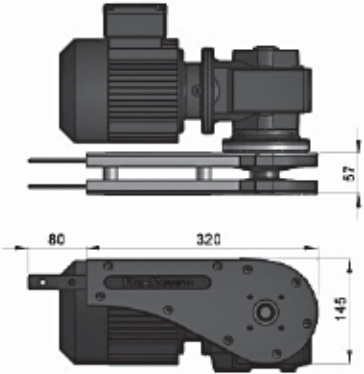
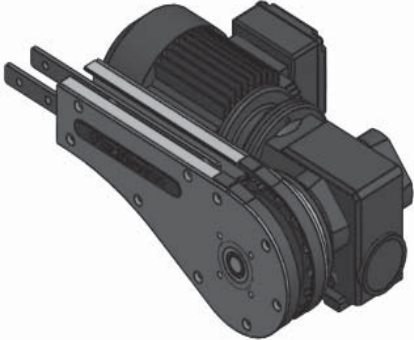
SEW gear motors are products of SEW Eurodrive

FK SERIES

FK Direct End Drive with Motor GP (LEFT)

FKDD-GP-0.25L, 0.37L, 0.55L

FKDD-GP-0L



Max Traction Force : 500N

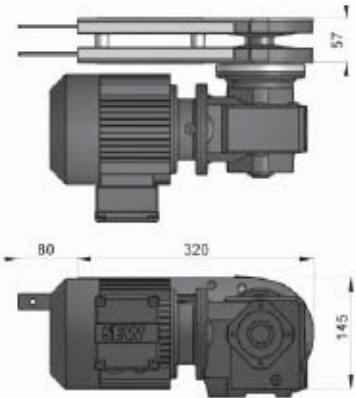
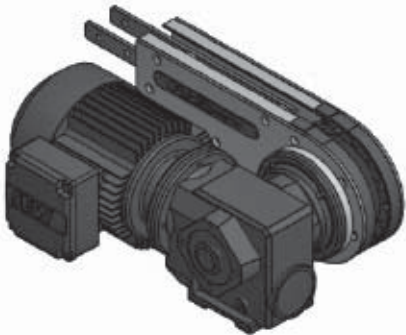
The Direct End Drive Unit GP is used for vertical wedge conveyor. Standard attached gear motors are with SEW motor size 0.25kW, 0.37kW & 0.55kW. FKDD-GP-0L represents direct drive without gear motor. FKDD-GP drives are used for vertical wedge conveyor.

UOM: pc Chain required 2-way: 0.8 meter Slide rail required 2-way: 0.5 meter

FK Direct End Drive with Motor GP (RIGHT)

FKDD-GP-0.25R, 0.37R, 0.55R

FKDD-GP-0R

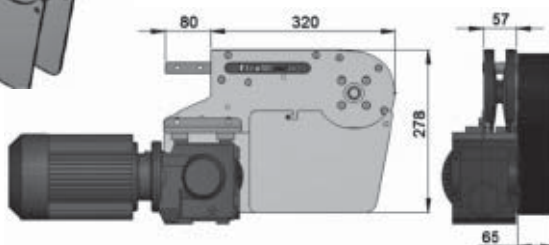
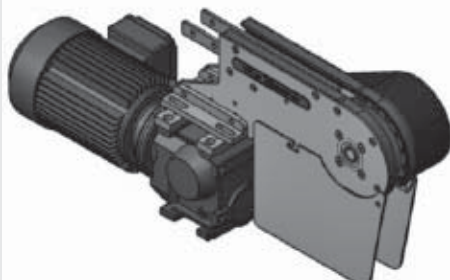


Max Traction Force : 500N

The Direct End Drive Unit GP is used for vertical wedge conveyor. Standard attached gear motors are with SEW motor size 0.25kW, 0.37kW & 0.55kW. FKDD-GP-0R represents direct drive without gear motor. FKDD-GP drives are used for vertical wedge conveyor.

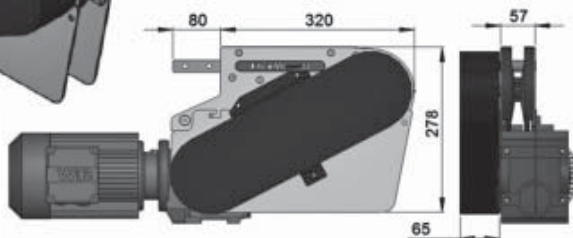
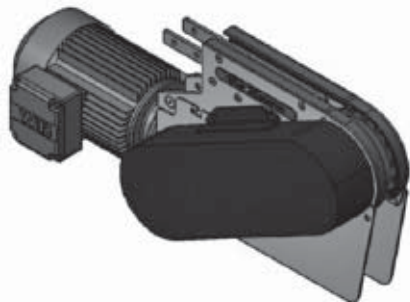
UOM: pc Chain required 2-way: 0.8 meter Slide rail required 2-way: 0.5 meter

SEW gear motors are products of SEW Eurodrive

FK Suspended End Drive with Motor (LEFT)
FKSD-0.25L1, 0.37L1, 0.55L1
FK Suspended End Drive without Motor (LEFT)
FKSD-0L1

Max Traction Force : 500N

The Suspended End Drive Unit is with torque limiter. Standard attached gear motors are with SEW motor size 0.25kW, 0.37kW & 0.55kW. FKSD-0L1 represents direct drive without gear motor.

UOM: pc Chain required 2-way: 0.8 meter Slide rail required 2-way: 0.5 meter

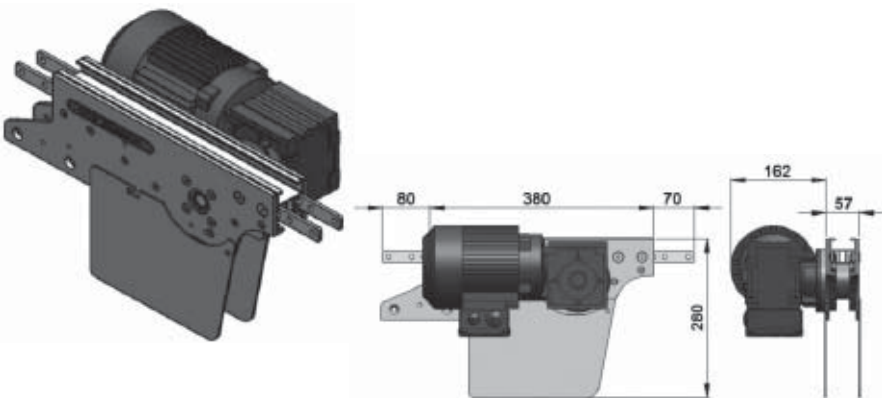
FK Suspended End Drive with Motor (RIGHT)
FKSD-0.25R1, 0.37R1, 0.55R1
FK Suspended End Drive without Motor (RIGHT)
FKSD-0R1

Max Traction Force : 500N

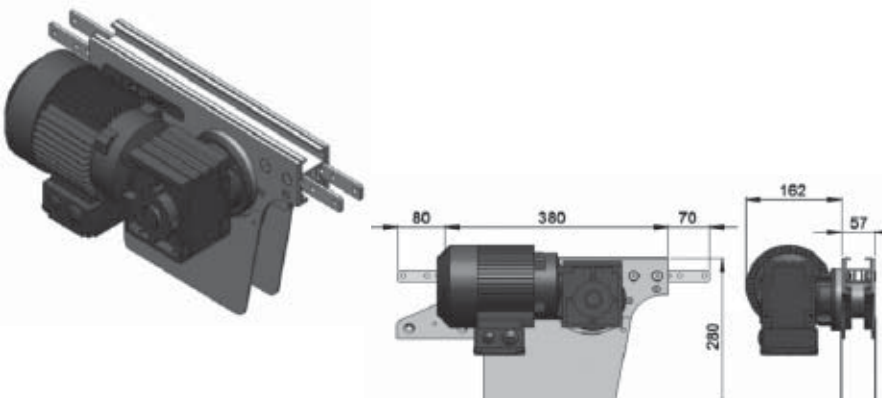
The Suspended End Drive Unit is with torque limiter. Standard attached gear motors are with SEW motor size 0.25kW, 0.37kW & 0.55kW. FKSD-0R1 represents direct drive without gear motor.

UOM: pc Chain required 2-way: 0.8 meter Slide rail required 2-way: 0.5 meter

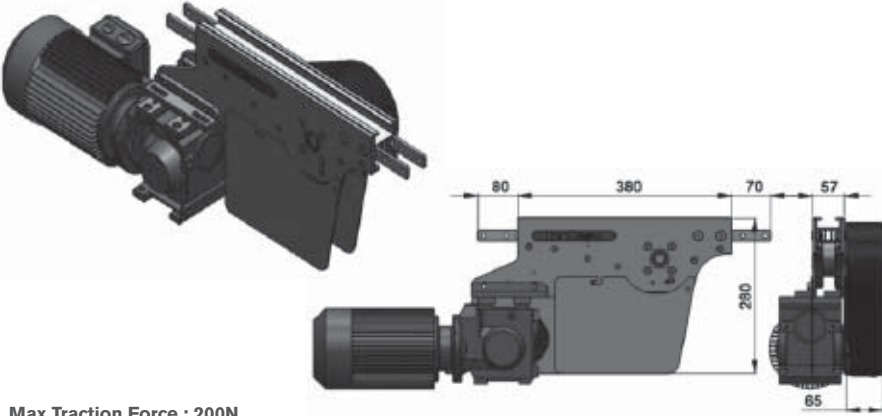
SEW gear motors are products of SEW Eurodrive

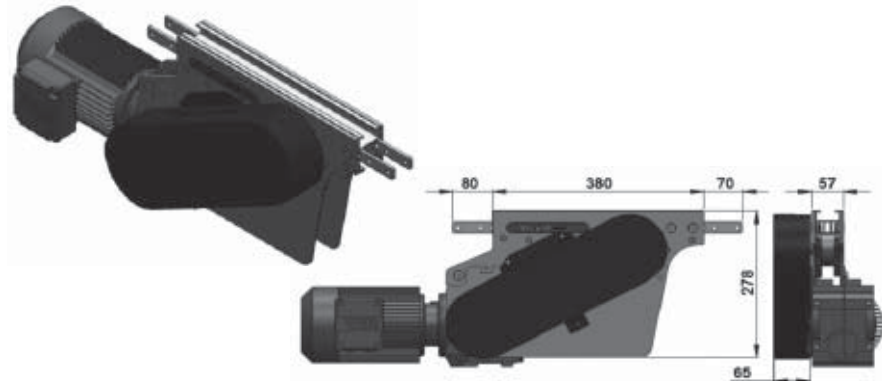
FK SERIES

FK Direct Intermediate Drive with Motor (LEFT)	FK Direct Intermediate Drive without Motor (LEFT)
FKID-DD-0.25L1, 0.37L1, 0.55L1	FKID-DD-0L1
	
Max Traction Force : 200N	
The Direct Intermediate Drive Unit is without torque limiter. Standard attached gear motors are with SEW motor size 0.25kW, 0.37kW & 0.55kW. FKID-DD-0L1 represents direct drive without gear motor. Maximum traction force for FKID-DD is lower than FKDD and FKSD.	
UOM: pc Chain required 2-way: 1.2 meter Slide rail required 2-way: 1.1 meter	

FK Direct Intermediate Drive with Motor (RIGHT)	FK Direct Intermediate Drive without Motor (RIGHT)
FKID-DD-0.25R1, 0.37R1, 0.55R1	FKID-DD-0R1
	
Max Traction Force : 200N	
The Direct Intermediate Drive Unit is without torque limiter. Standard attached gear motors are with SEW motor size 0.25kW, 0.37kW & 0.55kW. FKID-DD-0R1 represents direct drive without gear motor. Maximum traction force for FKID-DD is lower than FKDD and FKSD.	
UOM: pc Chain required 2-way: 1.2 meter Slide rail required 2-way: 1.1 meter	

SEW gear motors are products of SEW Eurodrive

FK Suspended Intermediate Drive with Motor (LEFT)	FK Suspended Intermediate Drive without Motor (LEFT)
FKID-SD-0.25L1, 0.37L1, 0.55L1	FKID-SD-0L1
	
Max Traction Force : 200N The Suspended Intermediate Drive Unit is with torque limiter. Standard attached gear motors are with SEW motor size 0.25kW, 0.37kW & 0.55kW. FKID-SD-0L1 represents suspended drive without gear motor. Maximum traction force for FKID-SD is lower than FKDD and FKSD.	
UOM: pc Chain required 2-way: 1.2 meter Slide rail required 2-way: 1.1 meter	

FK Suspended Intermediate Drive with Motor (RIGHT)	FK Suspended Intermediate Drive without Motor (RIGHT)
FKID-SD-0.25R1, 0.37R1, 0.55R1	FKID-SD-0R1
	
Max Traction Force : 200N The Suspended Intermediate Drive Unit is with torque limiter. Standard attached gear motors are with SEW motor size 0.25kW, 0.37kW & 0.55kW. FKID-SD-0R1 represents suspended drive without gear motor. Maximum traction force for FKID-SD is lower than FKDD and FKSD.	
UOM: pc Chain required 2-way: 1.2 meter Slide rail required 2-way: 1.1 meter	

SEW gear motors are products of SEW Eurodrive

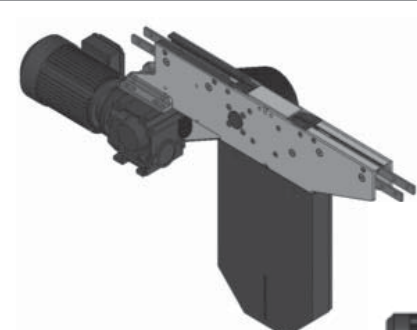
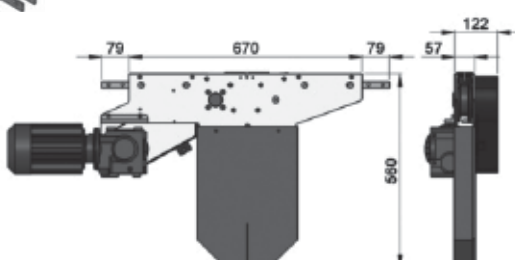
FK SERIES

FK Suspended Catenary Drive with Motor (LEFT)

FKCD-SD-0.25L, 0.37L, 0.55L

FK Suspended Catenary Drive without Motor (LEFT)

FKCD-SD-0L

Max Traction Force : 500N

The Suspended Catenary Drive Unit is with torque limiter. Standard attached gear motors are with SEW motor size 0.25kW, 0.37kW & 0.55kW. FKCD-SD-0L represents direct drive without gear motor.

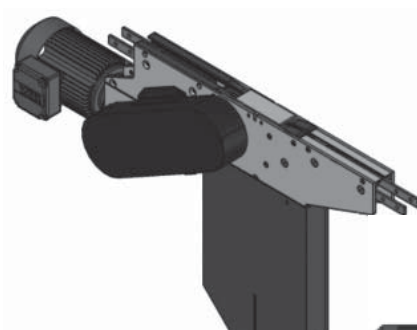
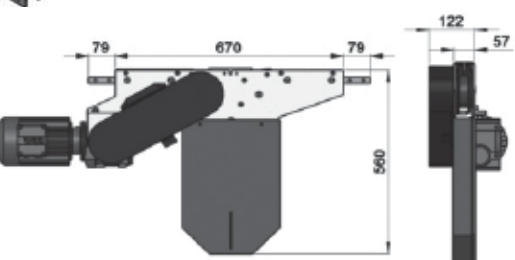
UOM: pc Chain required 1-way: 1.4 meter Slide rail required 1-way: 1.0 meter

FK Suspended Catenary Drive with Motor (RIGHT)

FKCD-SD-0.25R, 0.37R, 0.55R

FK Suspended Catenary Drive without Motor (RIGHT)

FKCD-SD-0R

Max Traction Force : 500N

The Suspended Catenary Drive Unit is with torque limiter. Standard attached gear motors are with SEW motor size 0.25kW, 0.37kW & 0.55kW. FKCD-SD-0R represents direct drive without gear motor.

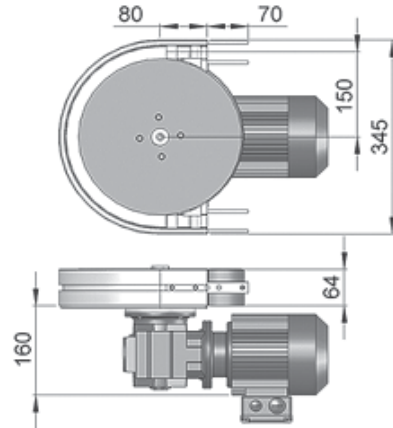
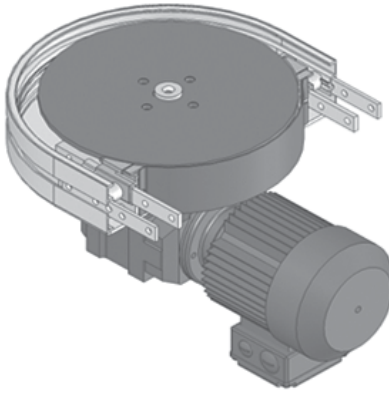
UOM: pc Chain required 2-way: 1.4 meter Slide rail required 2-way: 1.0 meter

FK Direct Wheel Drive with Motor

FKWD-DD-0.25, 0.37, 0.55

FK Direct Wheel Drive without Motor

FKWD-DD-0M



Max Traction Force : 200N

The Drive Wheel Drive Unit is without torque limiter. Standard attached gear motors are with SEW motor size 0.25kW, 0.37kW & 0.55kW. FKWD-DD-0M represents direct drive without gear motor. Maximum traction force for FKWD-DD is lower than FKDD and FKSD.

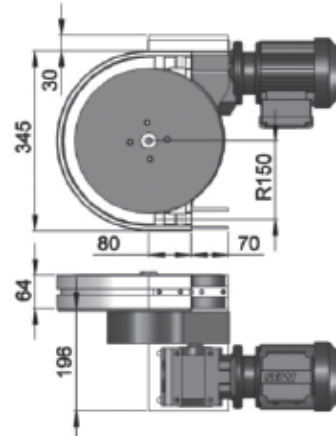
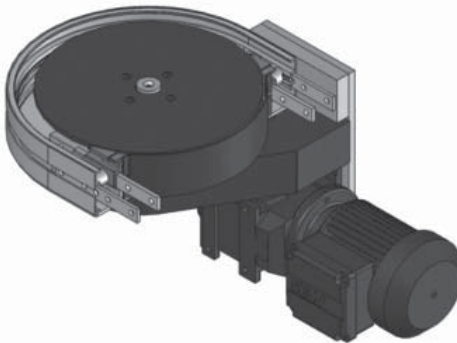
UOM: pc Chain required 1-way: 0.7 meter Slide rail required 1-way: 0.7 meter

FK Suspended Wheel Drive with Motor

FKWD-SD-0.25R1, 0.37R1, 0.55R1

FK Suspended Wheel Drive without Motor

FKWD-SD-0R1



Max Traction Force : 200N

The Suspended Wheel Drive Unit is with torque limiter. Standard attached gear motors are with SEW motor size 0.25kW, 0.37kW & 0.55kW. FKWD-SD-0M represents direct drive without gear motor. Maximum traction force for FKWD-SD is lower than FKDD and FKSD.

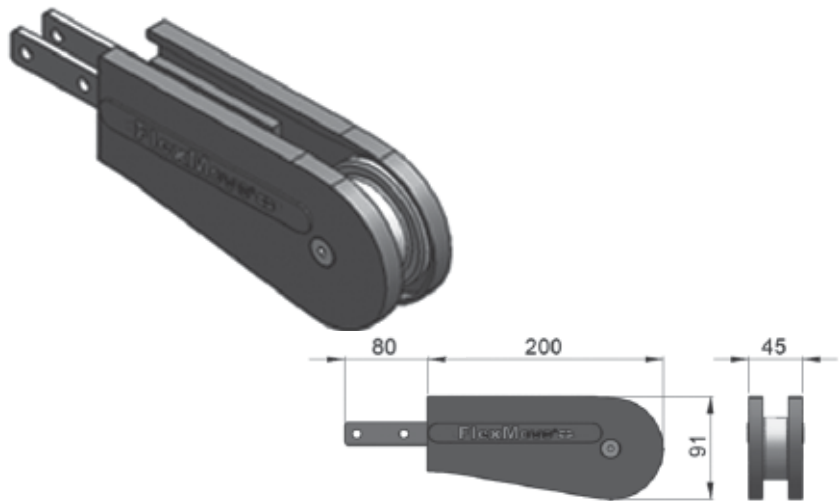
UOM: pc Chain required 1-way: 0.7 meter Slide rail required 1-way: 0.7 meter

SEW gear motors are products of SEW Eurodrive

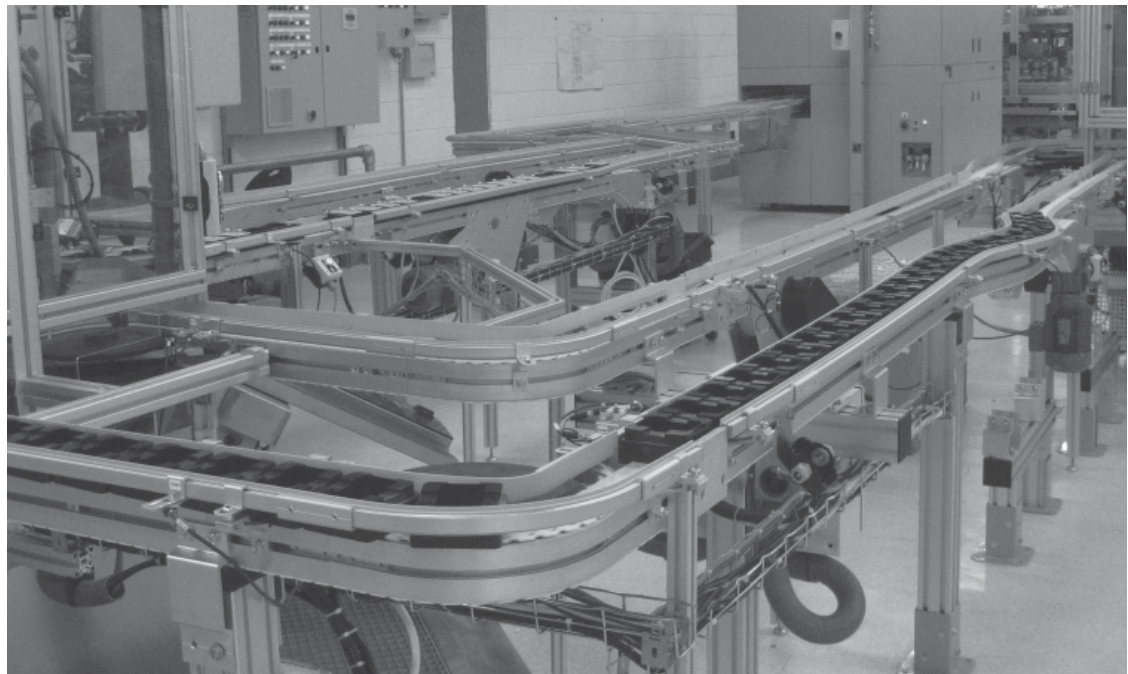
FK SERIES

FK Idler End-200

FKIE-200

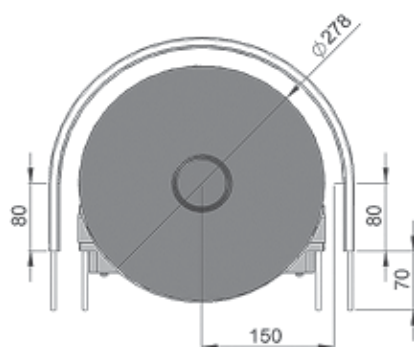
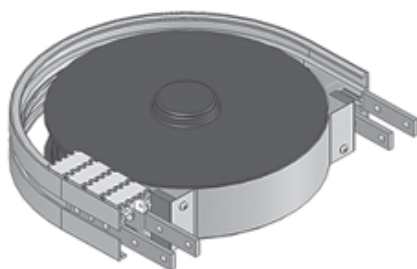


UOM: pc Chain required 2-way: 0.8 meter Slide rail required 2-way: 0



FK Wheel Bend 180°

FKWB-180R150A

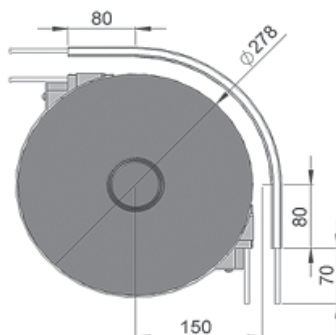


UOM: pc Chain required 2-way: 1.3 meter Slide rail required 2-way: 1.0 meter

FK

FK Wheel Bend 90°

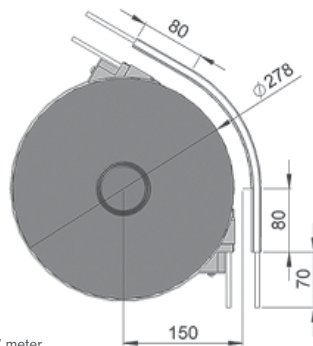
FKWB-90R150A



UOM: pc Chain required 2-way: 0.8 meter Slide rail required 2-way: 0.6 meter

FK Wheel Bend 60°

FKWB-60R150A

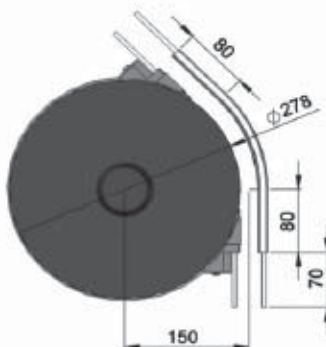


UOM: pc Chain required 2-way: 0.7 meter Slide rail required 2-way: 0.7 meter

FK SERIES

FK Wheel Bend 45°

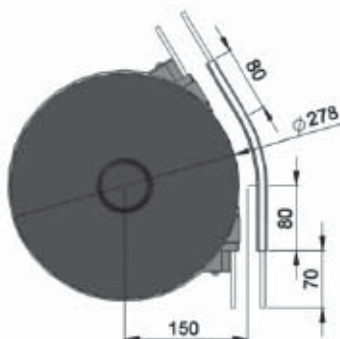
FKWB-45R150A



UOM: pc Chain required 2-way: 0.6 meter Slide rail required 2-way: 0.6 meter

FK Wheel Bend 30°

FKWB-30R150A



UOM: pc Chain required 2-way: 0.5 meter Slide rail required 2-way: 0.6 meter

FK Wheel Bend 5° - 180°

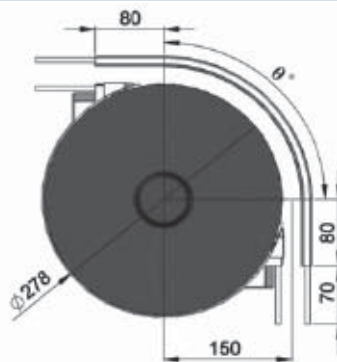
Example for FK Wheel Bend Ordering

- Wheel bend, $\emptyset^\circ \pm 1^\circ$
- FKWB- \emptyset° R150A

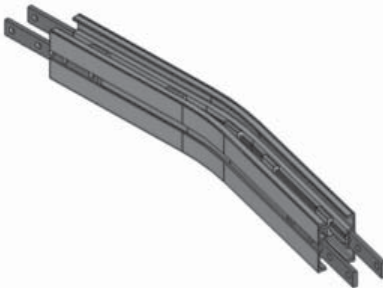
If an angle of 65° is needed for wheel bend,
so the ordering part number is

FKWB-65R150A

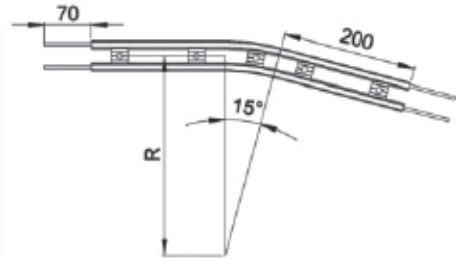
*The outer bend is assembled using connecting strip
(FACS-20x140). Angle of \emptyset° must be indicated
when ordering.*



FK Horizontal Plain Bend 15°

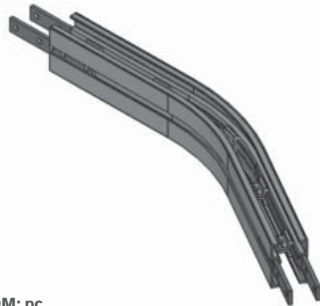
**UOM: pc**

Chain required 2-way (300, 500, 700, 1000): 1, 1.1, 1.2, 1.4 meter
 Slide rail required 2-way (300, 500, 700, 1000): 2, 2.2, 2.4, 2.8 meter

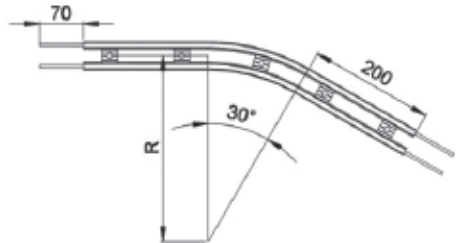
**Horizontal plain bend, 15° ± 1°**

R = 300 ± 10mm	FKHB-15R300
R = 500 ± 10mm	FKHB-15R500
R = 700 ± 10mm	FKHB-15R700
R = 1000 ± 10mm	FKHB-15R1000

FK Horizontal Plain Bend 30°

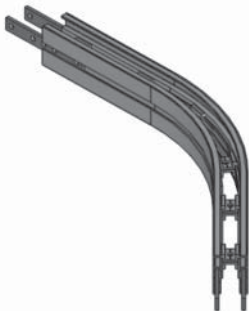
**UOM: pc**

Chain required 2-way (300, 500, 700, 1000): 1.2, 1.4, 1.6, 1.9 meter
 Slide rail required 2-way (300, 500, 700, 1000): 2.4, 2.8, 3.2, 3.8 meter

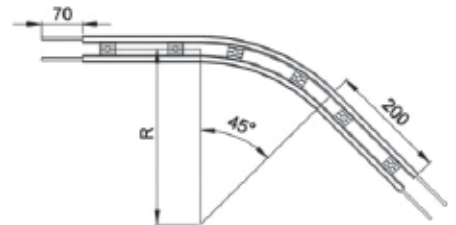
**Horizontal plain bend, 30° ± 1°**

R = 300 ± 10mm	FKHB-30R300
R = 500 ± 10mm	FKHB-30R500
R = 700 ± 10mm	FKHB-30R700
R = 1000 ± 10mm	FKHB-30R1000

FK Horizontal Plain Bend 45°

**UOM: pc**


Chain required 2-way (300, 500, 700, 1000): 1.3, 1.6, 1.9, 2.4 meter
 Slide rail required 2-way (300, 500, 700, 1000): 2.5, 2.9, 3.3, 3.9 meter

**Horizontal plain bend, 45° ± 1°**

R = 300 ± 10mm	FKHB-45R300
R = 500 ± 10mm	FKHB-45R500
R = 700 ± 10mm	FKHB-45R700
R = 1000 ± 10mm	FKHB-45R1000

FK SERIES

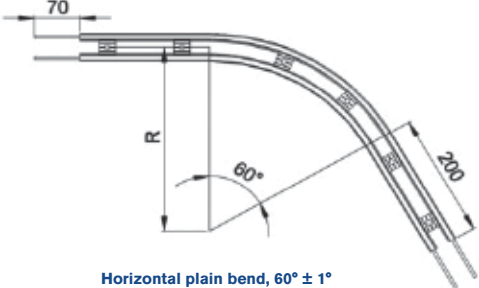
FK Horizontal Plain Bend 60°



UOM: pc

Chain required 2-way (300, 500, 700, 1000): 1.5, 1.9, 2.3, 2.9 meter


Slide rail required 2-way (300, 500, 700, 1000): 2.9, 3.7, 4.6, 5.8 meter



Horizontal plain bend, 60° ± 1°

R = 300 ± 10mm	FKHB-60R300
R = 500 ± 10mm	FKHB-60R500
R = 700 ± 10mm	FKHB-60R700
R = 1000 ± 10mm	FKHB-60R1000

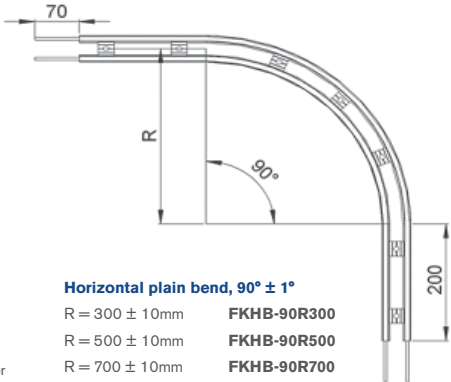
FK Horizontal Plain Bend 90°



UOM: pc

Chain required 2-way (300, 500, 700, 1000): 1.8, 2.4, 3.0, 4.0 meter

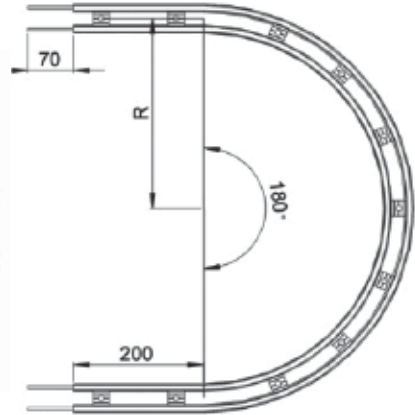
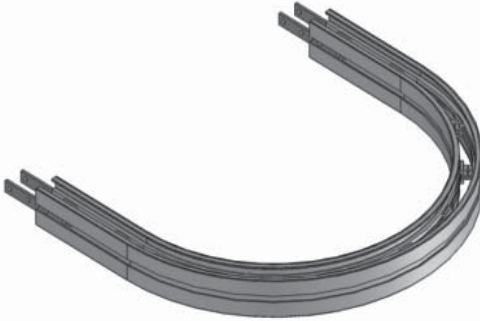
Slide rail required 2-way (300, 500, 700, 1000): 3.5, 4.8, 6.0, 8.0 meter



Horizontal plain bend, 90° ± 1°

R = 300 ± 10mm	FKHB-90R300
R = 500 ± 10mm	FKHB-90R500
R = 700 ± 10mm	FKHB-90R700
R = 1000 ± 10mm	FKHB-90R1000

FK Horizontal Plain Bend 180°



FK

UOM: pc

Chain required 2-way (300, 500, 700, 1000): 2.7, 4.0, 5.2, 7.1 meter

Slide rail required 2-way (300, 500, 700, 1000): 5.4, 7.9, 1.1, 14.2 meter

Horizontal plain bend, 180° ± 1°R = 300 ± 10mm **FKHB-180R300**R = 500 ± 10mm **FKHB-180R500**R = 700 ± 10mm **FKHB-180R700**R = 1000 ± 10mm **FKHB-180R1000**

FK Horizontal Plain Bend 5-180°

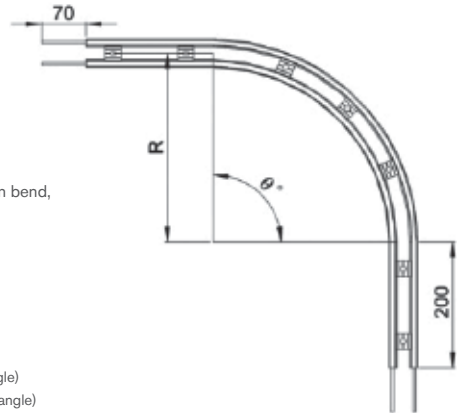
Example for FK Horizontal Plain Bend Ordering**Horizontal plain bend, 0° ± 1°**R = 300 ± 10mm **FKHB-0°R300**R = 500 ± 10mm **FKHB-0°R500**R = 700 ± 10mm **FKHB-0°R700**R = 1000 ± 10mm **FKHB-0°R1000**

If an angle of 120° is needed for radius R500 horizontal plain bend,
so the ordering part number is

FKHB-120R500**UOM: pc**

Chain required 2-way (300, 500, 700, 1000): meter (Variable to angle)

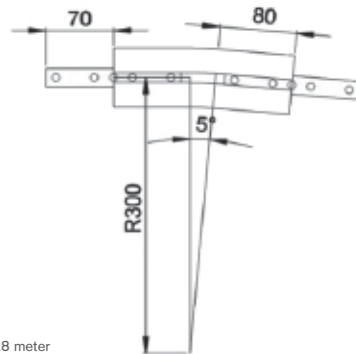
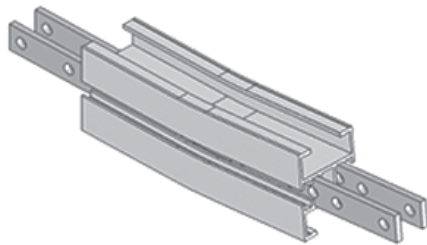
Slide rail required 2-way (300, 500, 700, 1000): meter (Variable to angle)



FK SERIES

FK Vertical Bend 5°

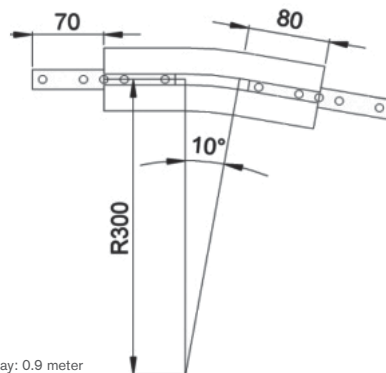
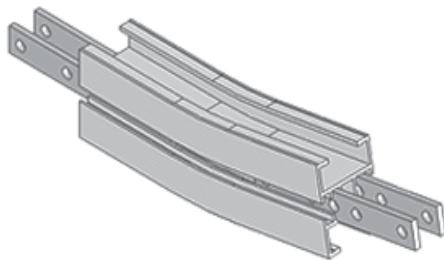
FKVB-5R300



UOM: pc Chain required 2-way: 0.4 meter Slide rail required 2-way: 0.8 meter

FK Vertical Bend 10°

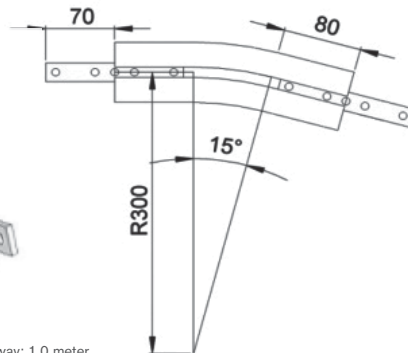
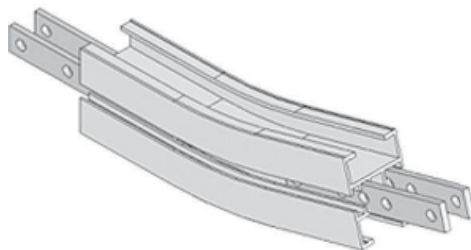
FKVB-10R300



UOM: pc Chain required 2-way: 0.5 meter Slide rail required 2-way: 0.9 meter

FK Vertical Bend 15°

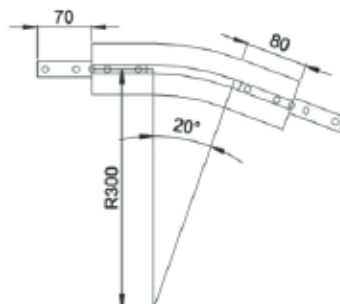
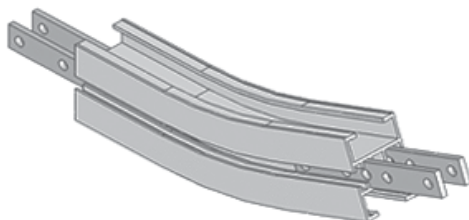
FKVB-15R300



UOM: pc Chain required 2-way: 0.5 meter Slide rail required 2-way: 1.0 meter

FK Vertical Bend 20°

FKVB-20R300

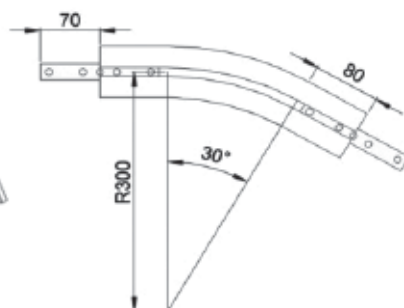


UOM: pc Chain required 2-way: 0.6 meter Slide rail required 2-way: 1.1 meter

FK

FK Vertical Bend 30°

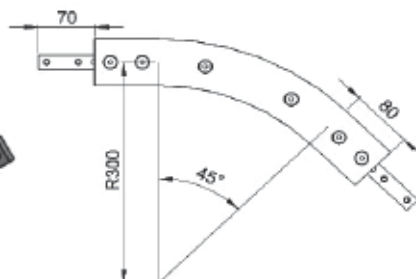
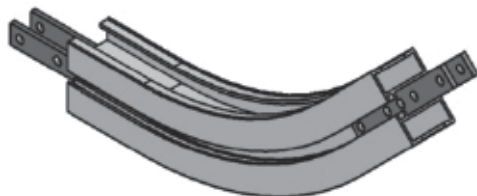
FKVB-30R300



UOM: pc Chain required 2-way: 0.7 meter Slide rail required 2-way: 1.3 meter

FK Vertical Bend 45°

FKVB-45R300

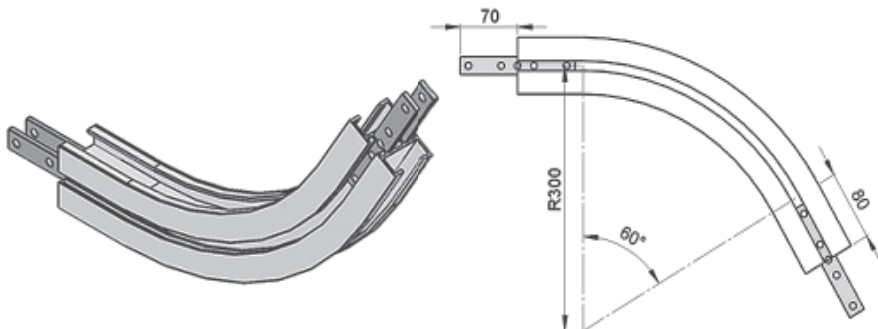


UOM: pc Chain required 2-way: 0.8 meter Slide rail required 2-way: 1.6 meter

FK SERIES

FK Vertical Bend 60°

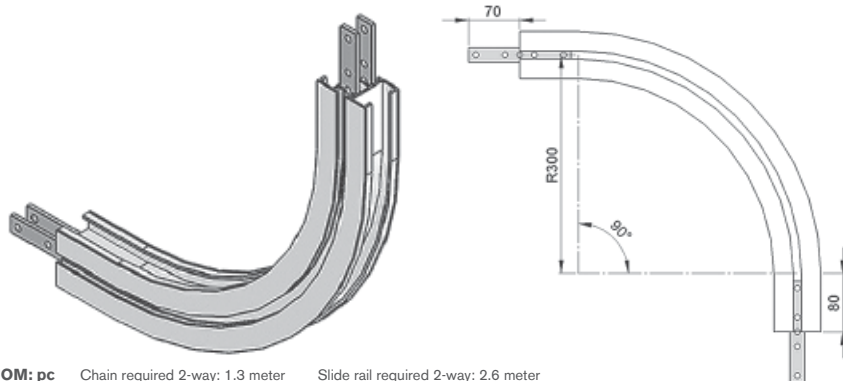
FKVB-60R300



UOM: pc Chain required 2-way: 1.0 meter Slide rail required 2-way: 1.9 meter

FK Vertical Bend 90°

FKVB-90R300



UOM: pc Chain required 2-way: 1.3 meter Slide rail required 2-way: 2.6 meter

FK Vertical Bend 5° - 90°

Example for FK Vertical Bend Ordering

- Vertical bend, $\emptyset^\circ \pm 1^\circ$
- FKVB- \emptyset° R300

If an angle of 65° is needed for vertical bend,
so the ordering part number is

FKVB-65R300

*The outer bend is assembled using connecting strip
(FACS-20x140). Angle of \emptyset° must be indicated
when ordering.*

