

**FK Series** is a compact and neat design for small items and fast transportation. It is also used for twin track application for pallet assembly line.

### FK Series Characteristic

**Beam Width:** 45mm

**Product Width:** Refer to Guide Rail Assembly

### Accessories Needed

**Slide Rail Required:** FASR-25K OR FASR-25KU

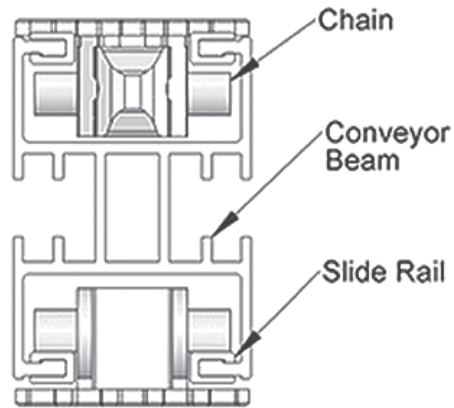
**Slide Rail Colour:** White Or Natural Colour

**Slide Rail Material:** HDPE OR UHMW-PE

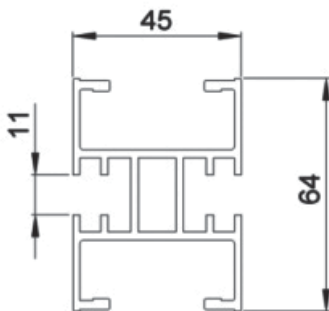
**Slide Rail Rivet:** FASLS-M3

Connecting strip is used to connect 2 beams.

Connecting Strip: FACS-20x140

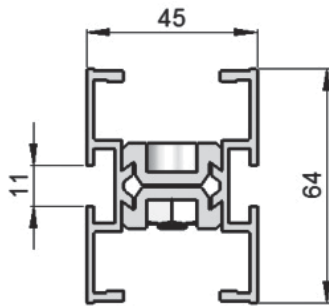


### Conveyor Beam FKCB-3

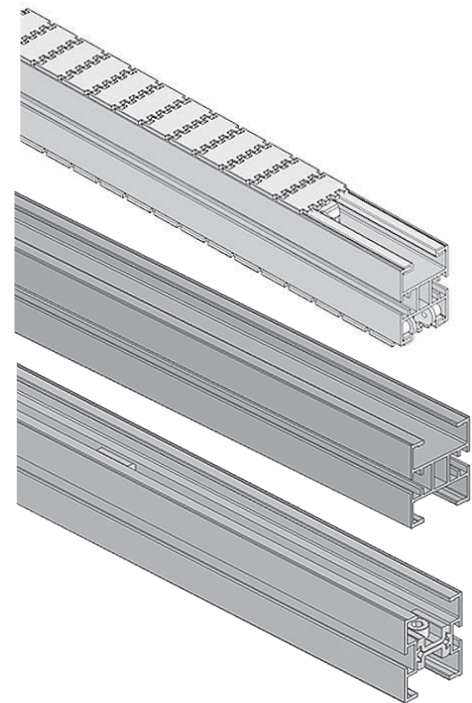


UOM: 3 Meter / Length

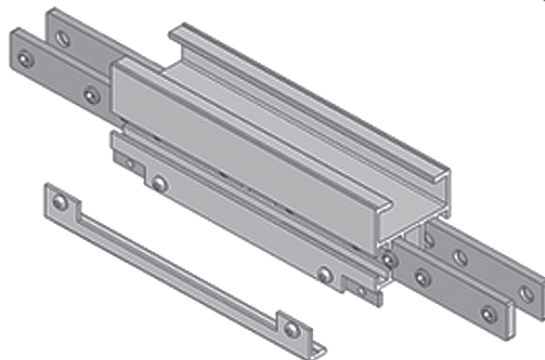
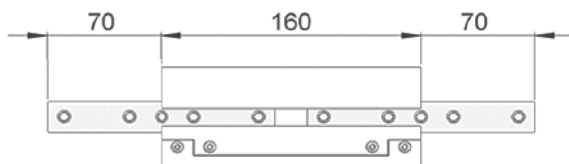
### Conveyor Half Beam FKCB-3H



UOM: 3 Meter / Length



### Chain Connecting Module FKCC-160



UOM : pc

### Chain Common Data

**Packaging:** 5m per box

**Pitch:** 25.4mm

**Width:** 44mm

Tensile Strength at 20°C: 4000N

**Colour:** White & Black (Conductive)

### Material :-

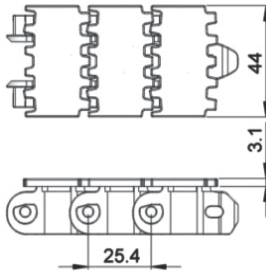
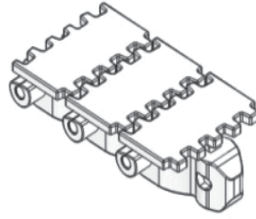
**Chain:** White Acetal / POM

**Pivot:** Polyamide

**Pivot Pin:** Stainless Steel

**Insert (Wedge & Friction):** TPE Grey

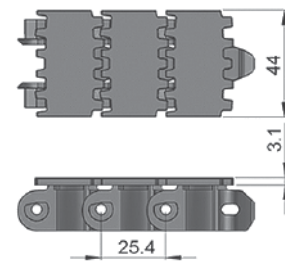
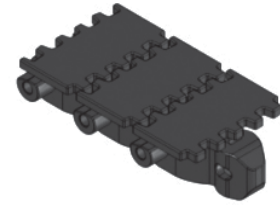
### Standard Plain Chain **FKPC-5**



**UOM: 5 Meter / box**

Application: Suitable for horizontal and slope < 5° transport of products with accumulation.

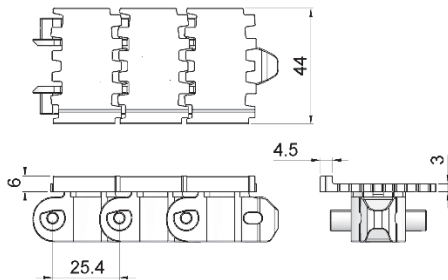
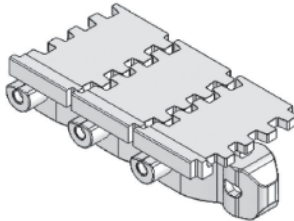
### Conductive Chain **FKPC-5CD**



**UOM: 5 Meter / box**

Application: Suitable for transport of static sensitive product.

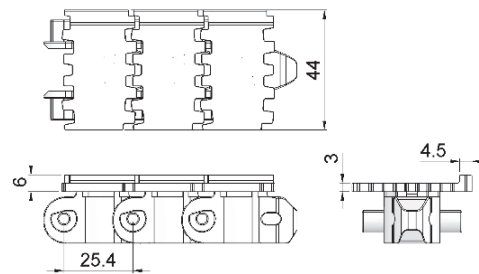
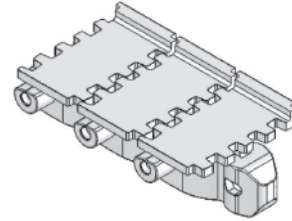
### Wedge Top Chain Right **FKWT-5PR**



**UOM: 5 Meter / box**

Application: Suitable for PET bottle transport.

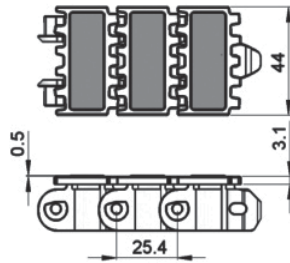
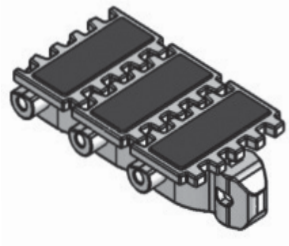
### Wedge Top Chain Left **FKWT-5PL**



**UOM: 5 Meter / box**

Application: Suitable for PET bottle transport.

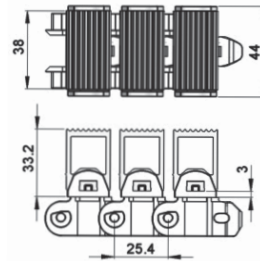
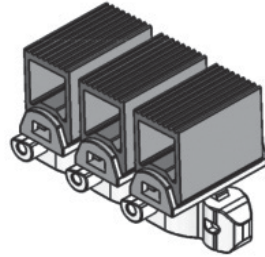
## Friction Top Chain **FKFT-5**



**UOM: 5 Meter / box**

Application: Suitable for transport product in slope  $> 5^\circ$  but  $\leq 30^\circ$  without accumulation.

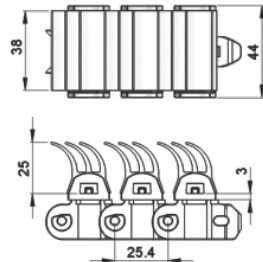
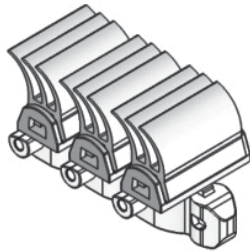
## Wedge Top Chain **FKWT-5C**



**UOM: 5 Meter / box**

Application: Vertical Wedge transportation of products.

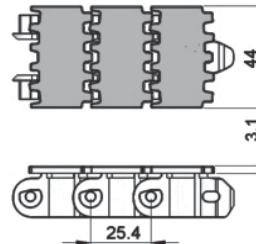
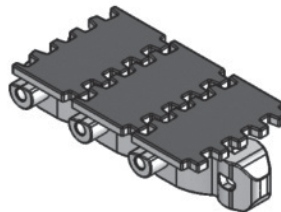
## Wedge Top Chain **FKWT-5D**



**UOM: 5 Meter / box**

Application: Vertical Wedge transportation of products.

## Flocked Chain **FKFK-5**



**UOM: 5 Meter / box**

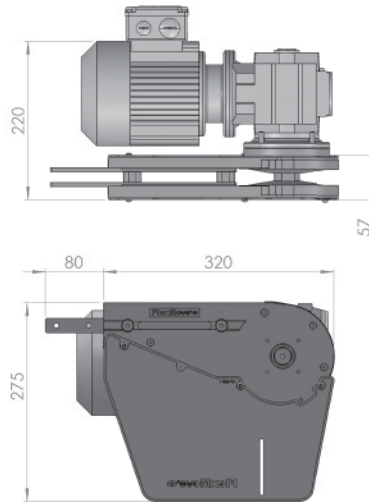
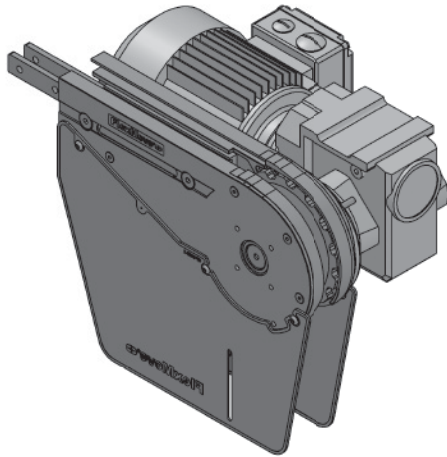
Application: Suitable to transport light weight, fragile and scratch sensitive product.

FK Direct End Drive with Motor (LEFT)

FKDD-A45-0.25L, 0.37L, 0.55L

FK Direct End Drive without Motor (LEFT)

FKDD-A45-0L



**Max Traction Force : 500N**

The Direct End Drive Unit is without torque limiter. Standard attached gear motors are with SEW motor size 0.25kW, 0.37kW & 0.55kW. FKDD-A45-0L represents direct drive without motor. Multi channel drives are available upon request.

**UOM: pc**

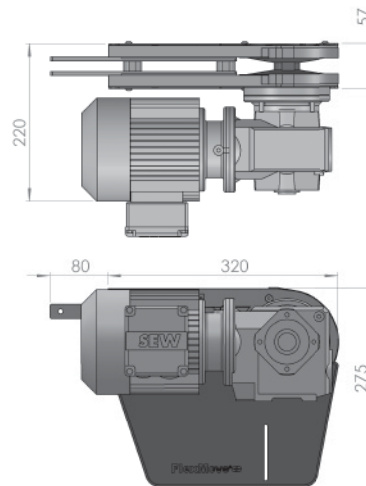
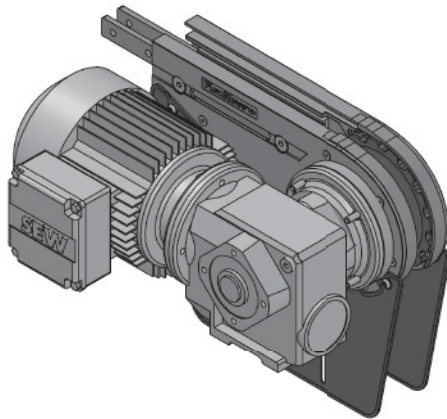
Chain required 2-way: 0.8 meter  
Slide rail required 2-way: 0.5 meter

FK Direct End Drive with Motor (RIGHT)

FKDD-A45-0.25R, 0.37R, 0.55R

FK Direct End Drive without Motor (RIGHT)

FKDD-A45-0R



**Max Traction Force : 500N**

The Direct End Drive Unit is without torque limiter. Standard attached gear motors are with SEW motor size 0.25kW, 0.37kW & 0.55kW. FKDD-A45-0R represents direct drive without motor. Multi channel drives are available upon request.

**UOM: pc**

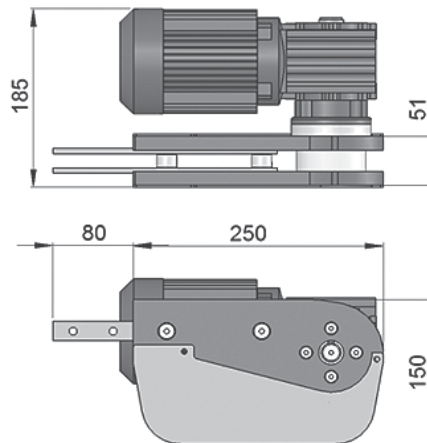
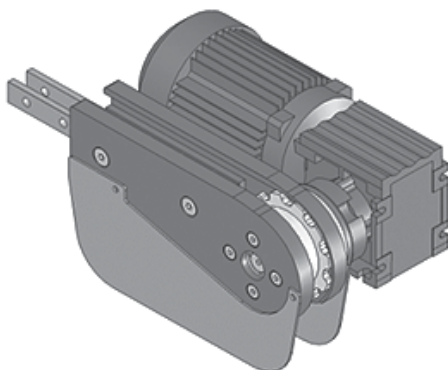
Chain required 2-way: 0.8 meter  
Slide rail required 2-way: 0.5 meter

FK Direct End Drive with Motor (LEFT)

FKDD-250-0.25L, 0.37L, 0.55L

FK Direct End Drive without Motor (LEFT)

FKDD-250-0L



**Max Traction Force : 400N**

The Direct End Drive Unit is without torque limiter. Standard attached gear motors are with SEW motor size is 0.12kW. FKDD-250-0L represents direct drive without gear motor. Multi channel drives are available upon request.

**UOM: pc**

Chain required 2-way: 0.55 meter  
Slide rail required 2-way: 0

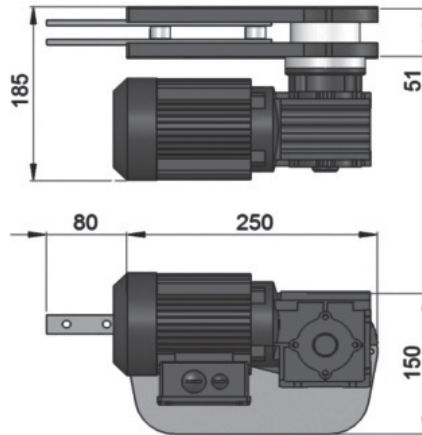
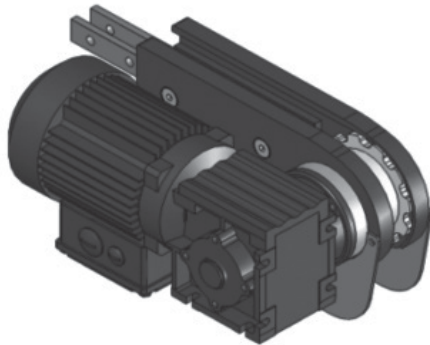
SEW gear motors are products of SEW Eurodrive

## FK Direct End Drive with Motor (RIGHT)

FKDD-250-0.25R, 0.37R, 0.55R

## FK Direct End Drive without Motor (RIGHT)

FKDD-250-0R



### Max Traction Force : 400N

The Direct End Drive Unit is without torque limiter. Standard attached gear motors are with SEW motor size is 0.12kW. FKDD-250-0R represents direct drive without gear motor. Multi channel drives are available upon request.

### UOM: pc

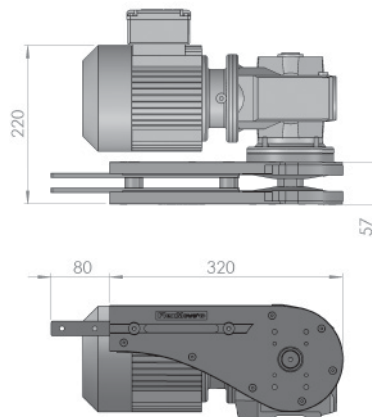
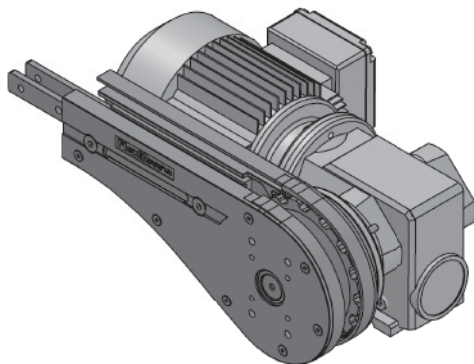
Chain required 2-way: 0.55 meter  
Slide rail required 2-way: 0

## FK Direct End Drive with Motor GP (LEFT)

FKDD-A45GP-0.25L, 0.37L, 0.55L

## FK Direct End Drive without Motor GP (Left)

FKDD-A45GP-0L



### Max Traction Force : 500N

The Direct End Drive Unit GP is without torque limiter. Standard attached gear motors are with SEW motor size 0.25kW, 0.37kW & 0.55kW. FKDD-A45GP-0L represents direct drive without gear motor.

### UOM: pc

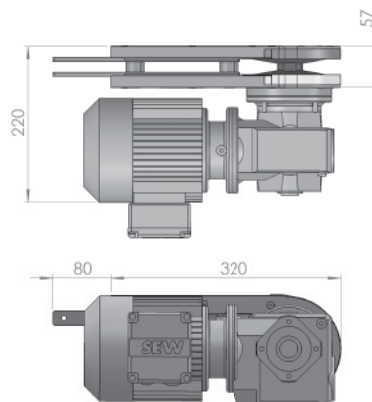
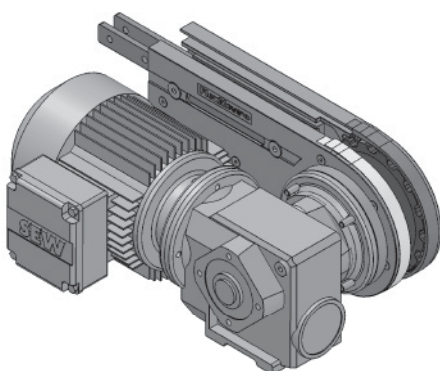
Chain required 2-way: 0.8 meter  
Slide rail required 2-way: 0.5 meter

## FK Direct End Drive with Motor GP (RIGHT)

FKDD-A45GP-0.25R, 0.37R, 0.55R

## FK Direct End Drive without Motor GP (RIGHT)

FKDD-A45GP-0R



### Max Traction Force : 500N

The Direct End Drive Unit GP is without torque limiter. Standard attached gear motors are with SEW motor size 0.25kW, 0.37kW & 0.55kW. FKDD-A45GP-0R represents direct drive without gear motor.

### UOM: pc

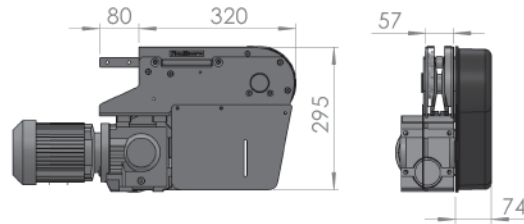
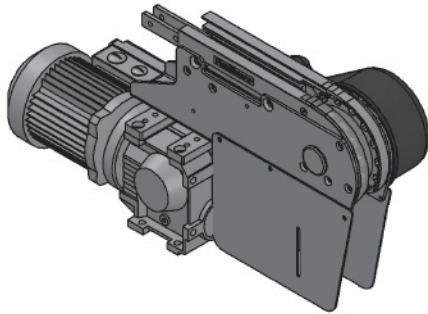
SEW gear motors are products of SEW Eurodrive

FK Suspended End Drive with Motor (LEFT)

FKSD-A45-0.25L, 0.37L, 0.55L

FK Suspended End Drive without Motor (LEFT)

FKSD-A45-0L



**Max Traction Force : 500N**

The Suspended End Drive Unit is with torque limiter. Standard attached gear motors are with SEW motor size 0.25kW, 0.37kW & 0.55kW. FKSD-A45-0L represents direct drive without gear motor.

**UOM: pc**

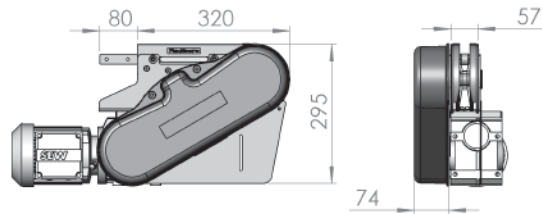
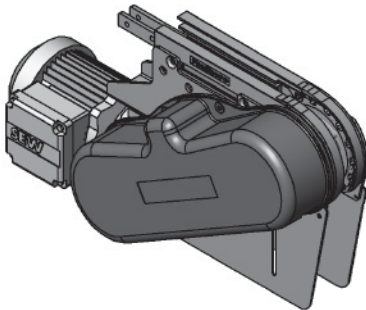
Chain required 2-way: 0.8 meter  
Slide rail required 2-way: 0.5 meter

FK Suspended End Drive with Motor (RIGHT)

FKSD-A45-0.25R, 0.37R, 0.55R

FK Suspended End Drive without Motor (RIGHT)

FKSD-A45-0R



**Max Traction Force : 500N**

The Suspended End Drive Unit is with torque limiter. Standard attached gear motors are with SEW motor size 0.25kW, 0.37kW & 0.55kW. FKSD-A45-0R represents direct drive without gear motor.

**UOM: pc**

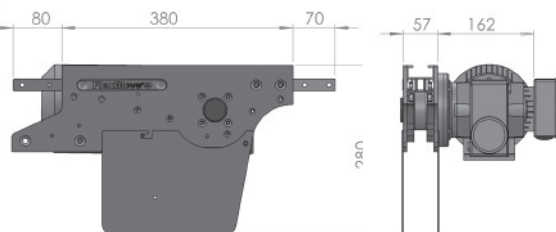
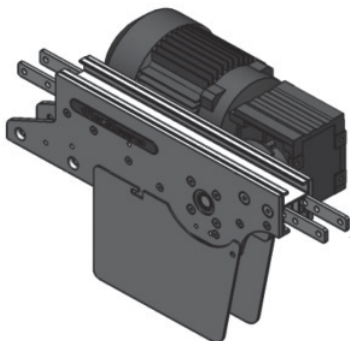
Chain required 2-way: 0.8 meter  
Slide rail required 2-way: 0.5 meter

FK Direct Intermediate Drive with Motor (LEFT)

FKID-DD-0.25L1, 0.37L1, 0.55L1

FK Direct Intermediate Drive without Motor (LEFT)

FKID-DD-0L1



**Max Traction Force : 200N**

The Direct Intermediate Drive Unit is without torque limiter. Standard attached gear motors are with SEW motor size 0.25kW, 0.37kW & 0.55kW. FKID-DD-0L1 represents direct drive without gear motor. Maximum traction force for FKID-DD is lower than FKDD and FKSD.

**UOM: pc**

Chain required 2-way: 1.2 meter  
Slide rail required 2-way: 1.1 meter

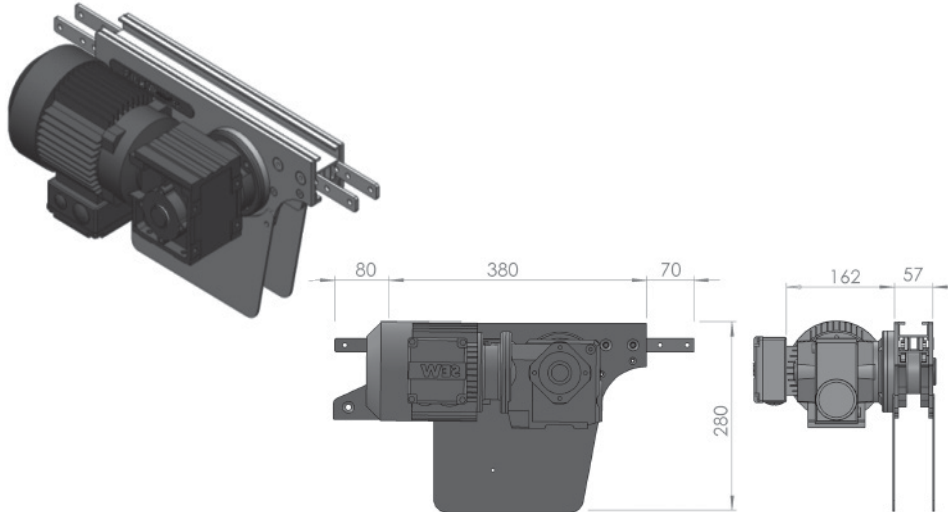
SEW gear motors are products of SEW Eurodrive

## FK Direct Intermediate Drive with Motor (RIGHT)

## FK Direct Intermediate Drive without Motor (RIGHT)

FKID-DD-0.25R1, 0.37R1, 0.55R1

FKID-DD-0R1



### Max Traction Force : 200N

The Direct Intermediate Drive Unit is without torque limiter. Standard attached gear motors are with SEW motor size 0.25kW, 0.37kW & 0.55kW. FKID-DD-0R1 represents direct drive without gear motor. Maximum traction force for FKID-DD is lower than FKDD and FKSD.

### UOM: pc

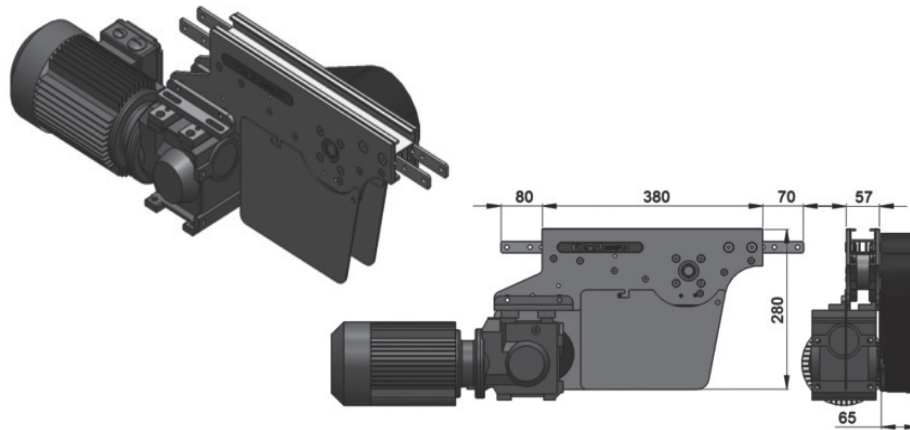
Chain required 2-way: 1.2 meter  
Slide rail required 2-way: 1.1 meter

## FK Suspended Intermediate Drive with Motor (LEFT)

## FK Suspended Intermediate Drive without Motor (LEFT)

FKID-SD-0.25L1, 0.37L1, 0.55L1

FKID-SD-0L1



### Max Traction Force : 200N

The Suspended Intermediate Drive Unit is with torque limiter. Standard attached gear motors are with SEW motor size 0.25kW, 0.37kW & 0.55kW. FKID-SD-0L1 represents suspended drive without gear motor. Maximum traction force for FKID-SD is lower than FKDD and FKSD.

### UOM: pc

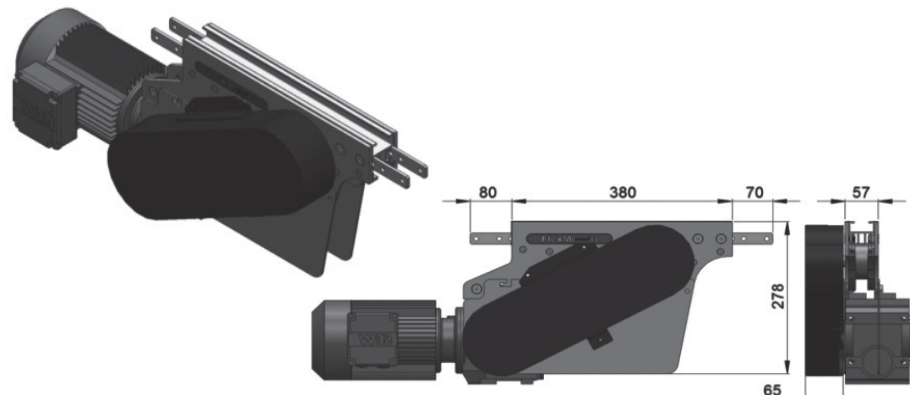
Chain required 2-way: 1.2 meter  
Slide rail required 2-way: 1.1 meter

## FK Suspended Intermediate Drive with Motor (RIGHT)

## FK Suspended Intermediate Drive without Motor (RIGHT)

FKID-SD-0.25R1, 0.37R1, 0.55R1

FKID-SD-0R1



### Max Traction Force : 200N

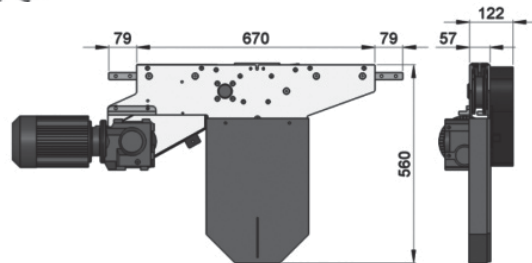
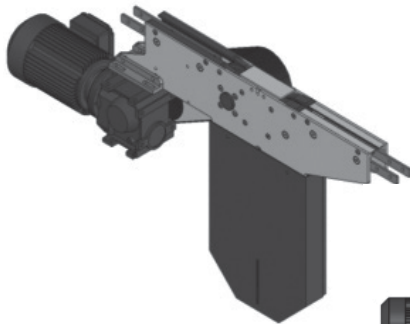
The Suspended Intermediate Drive Unit is with torque limiter. Standard attached gear motors are with SEW motor size 0.25kW, 0.37kW & 0.55kW. FKID-SD-0R1 represents suspended drive without gear motor. Maximum traction force for FKID-SD is lower than FKDD and FKSD.

### UOM: pc

Chain required 2-way: 1.2 meter  
Slide rail required 2-way: 1.1 meter

SEW gear motors are products of SEW Eurodrive

FK Suspended Catenary Drive with Motor (LEFT)	FK Suspended Catenary Drive without Motor (LEFT)
FKCD-SD-0.25L, 0.37L, 0.55L	FKCD-SD-0L



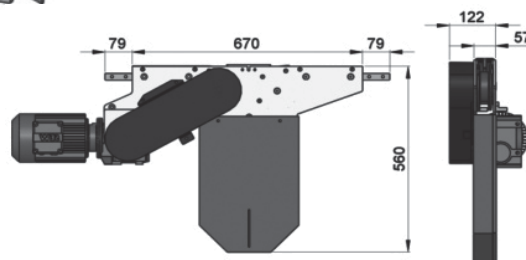
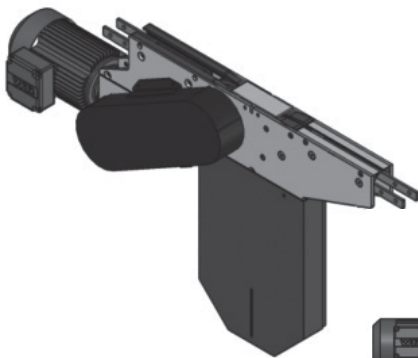
**Max Traction Force : 500N**

The Suspended Catenary Drive Unit is with torque limiter. Standard attached gear motors are with SEW motor size 0.25kW, 0.37kW & 0.55kW. FKCD-SD-0L represents direct drive without gear motor.

**UOM: pc**

Chain required 1-way: 1.4 meter  
Slide rail required 1-way: 1.0 meter

FK Suspended Catenary Drive with Motor (RIGHT)	FK Suspended Catenary Drive without Motor (RIGHT)
FKCD-SD-0.25R, 0.37R, 0.55R	FKCD-SD-0R



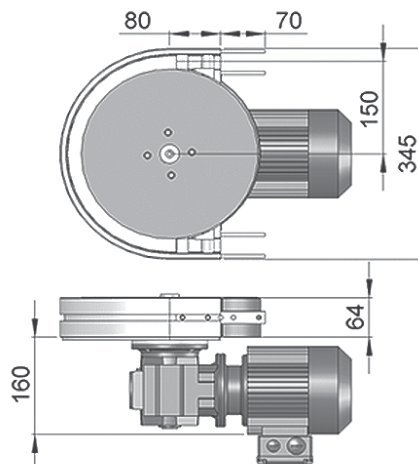
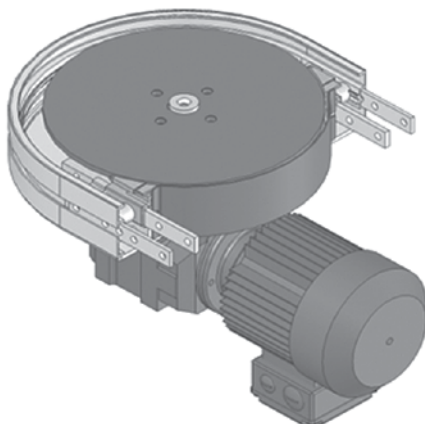
**Max Traction Force : 500N**

The Suspended Catenary Drive Unit is with torque limiter. Standard attached gear motors are with SEW motor size 0.25kW, 0.37kW & 0.55kW. FKCD-SD-0R represents direct drive without gear motor.

**UOM: pc**

Chain required 2-way: 1.4 meter  
Slide rail required 2-way: 1.0 meter

FK Direct Wheel Drive with Motor	FK Direct Wheel Drive without Motor
FKWD-DD-0.25, 0.37, 0.55	FKWD-DD-0M



**Max Traction Force : 200N**

The Drive Wheel Drive Unit is without torque limiter. Standard attached gear motors are with SEW motor size 0.25kW, 0.37kW & 0.55kW. FKWD-DD-0M represents direct drive without gear motor. Maximum traction force for FKWD-DD is lower than FKDD and FKSD.

**UOM: pc**

Chain required 1-way: 0.7 meter  
Slide rail required 1-way: 0.7 meter

SEW gear motors are products of SEW Eurodrive

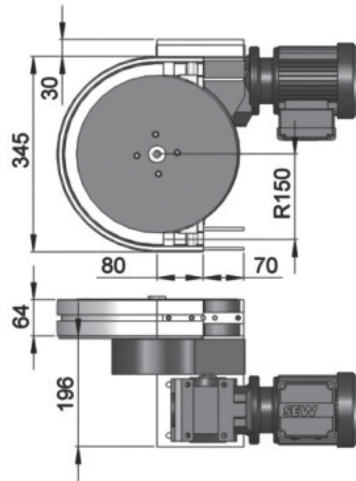
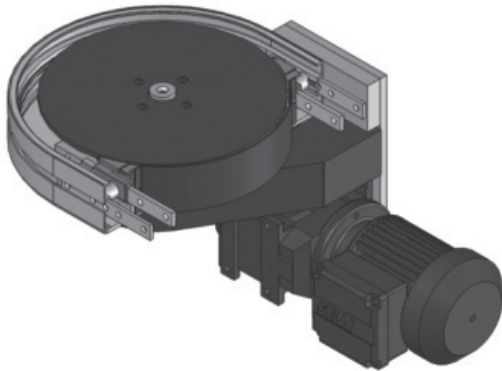


## FK Suspended Wheel Drive with Motor

FKWD-SD-0.25, 0.37, 0.55

## FK Suspended Wheel Drive without Motor

FKWD-SD-0M



### Max Traction Force : 200N

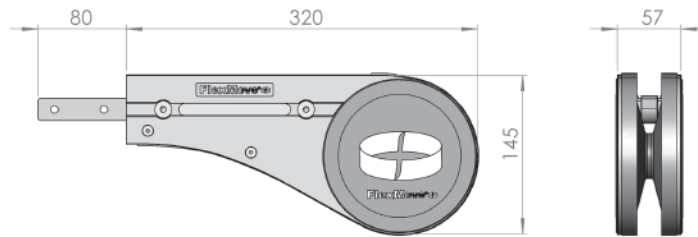
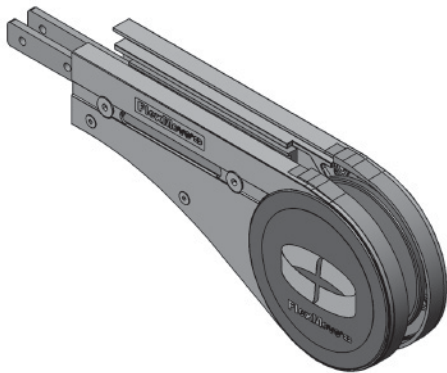
The Suspended Wheel Drive Unit is with torque limiter. Standard attached gear motors are with SEW motor size 0.25kW, 0.37kW & 0.55kW. FKWD-SD-0M represents direct drive without gear motor. Maximum traction force for FKWD-SD is lower than FKDD and FKSD.

### UOM: pc

Chain required 1-way: 0.7 meter  
Slide rail required 1-way: 0.7 meter

## FK Ilder End-45

FKIE-A45

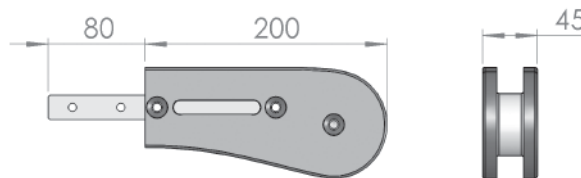
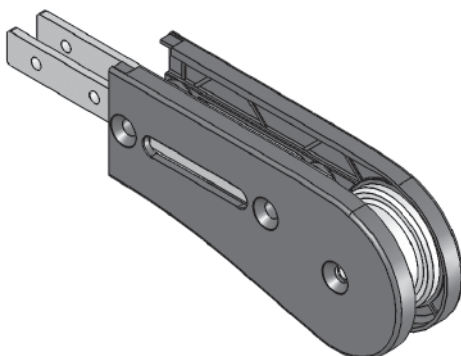


### UOM: pc

Chain required 2-way: 0.8 meter  
Slide rail required 2-way: 0.5meter

## FK Ilder End-200

FKIE-200



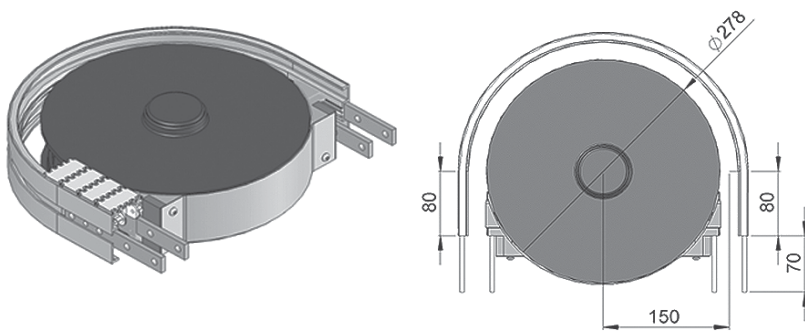
### UOM: pc

Chain required 2-way: 0.8 meter  
Slide rail required 2-way: 0

SEW gear motors are products of SEW Eurodrive

FK Wheel Bend 180°

FKWB-180R150A

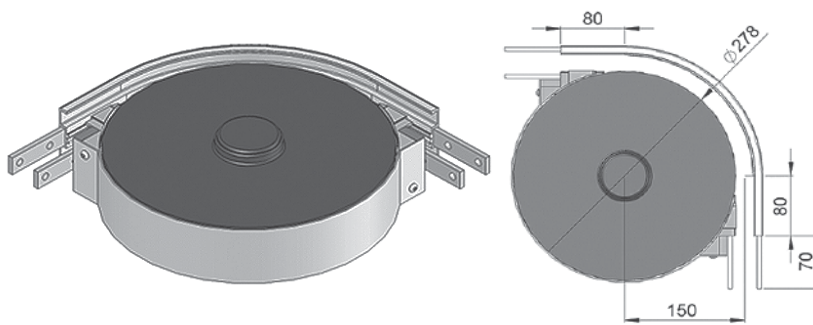


**UOM:** pc

Chain required 2-way: 1.3 meter  
Slide rail required 2-way: 1.3 meter

FK Wheel Bend 90°

FKWB-90R150A

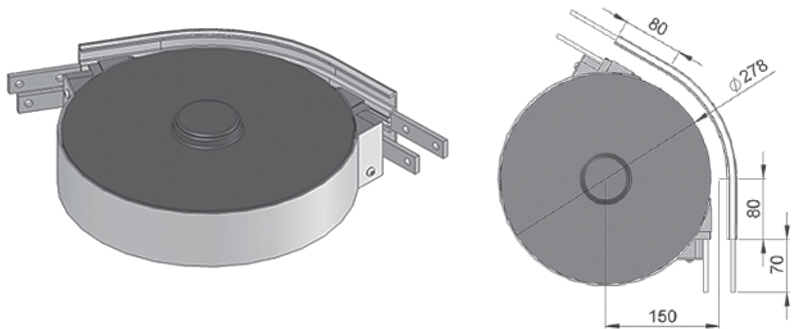


**UOM:** pc

Chain required 2-way: 0.8 meter  
Slide rail required 2-way: 0.8 meter

FK Wheel Bend 60°

FKWB-60R150A

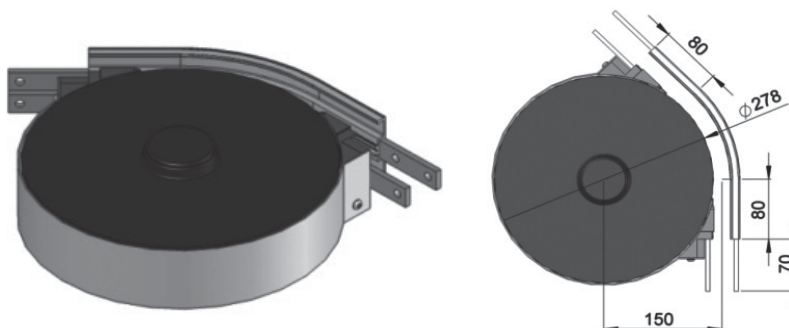


**UOM:** pc

Chain required 2-way: 0.6 meter  
Slide rail required 2-way: 0.6 meter

FK Wheel Bend 45°

FKWB-45R150A

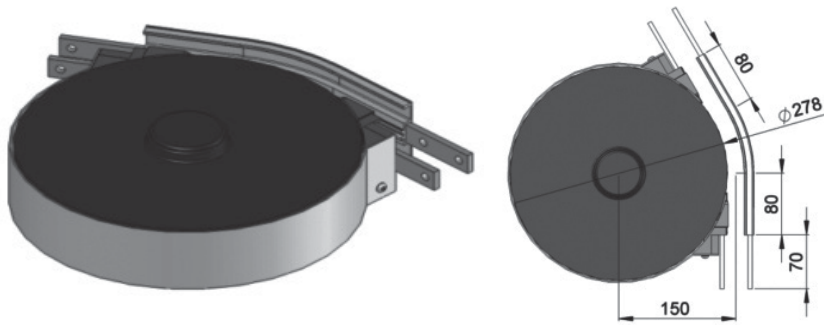


**UOM:** pc

Chain required 2-way: 0.6 meter  
Slide rail required 2-way: 0.6 meter

## FK Wheel Bend 30°

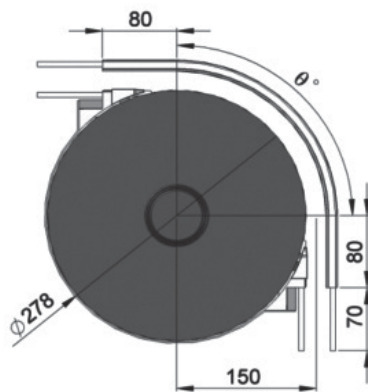
FKWB-30R150A



**UOM: pc**

Chain required 2-way: 0.5 meter  
Slide rail required 2-way: 0.5 meter

## FK Wheel Bend 5° - 180°



### Example for FK Wheel Bend Ordering

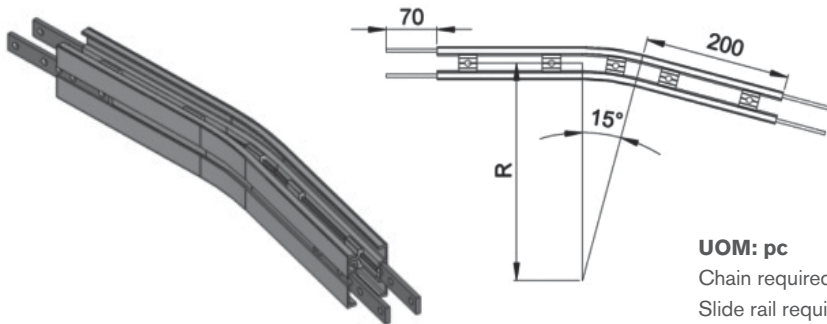
- Wheel bend,  $\text{Ø}^\circ \pm 1^\circ$
- FKWB- $\text{Ø}^\circ\text{R}150\text{A}$

If an angle of 65° is needed for wheel bend, so the ordering part number is

**FKWB-65R150A**

*The outer bend is assembled using connecting strip (FACS-20x140). Angle of  $\text{Ø}^\circ$  must be indicated when ordering.*

## FK Horizontal Plain Bend 15°



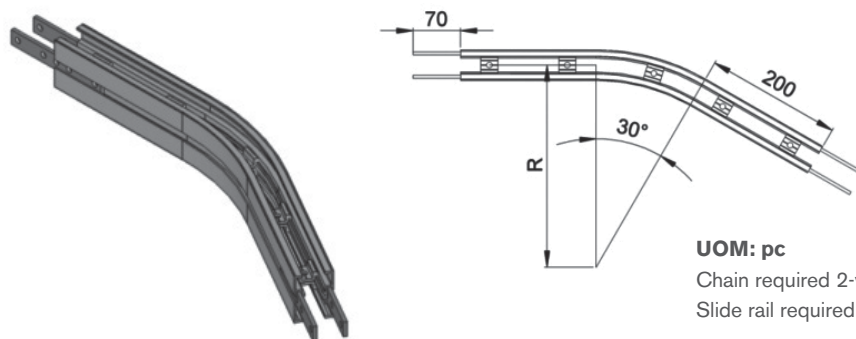
### Horizontal plain bend, 15° ± 1°

R = 300 ± 10mm	<b>FKHB-15R300</b>
R = 500 ± 10mm	<b>FKHB-15R500</b>
R = 700 ± 10mm	<b>FKHB-15R700</b>
R = 1000 ± 10mm	<b>FKHB-15R1000</b>

**UOM: pc**

Chain required 2-way (300, 500, 700, 1000): 1, 1.1, 1.2, 1.3 meter  
Slide rail required 2-way (300, 500, 700, 1000): 1.9, 2.1, 2.3, 2.6 meter

## FK Horizontal Plain Bend 30°



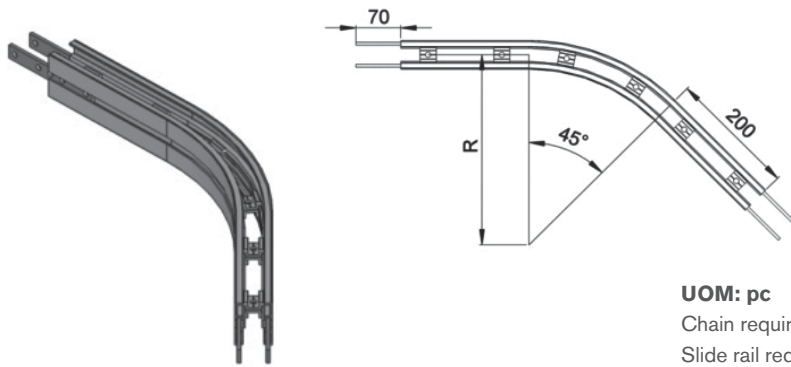
### Horizontal plain bend, 30° ± 1°

R = 300 ± 10mm	<b>FKHB-30R300</b>
R = 500 ± 10mm	<b>FKHB-30R500</b>
R = 700 ± 10mm	<b>FKHB-30R700</b>
R = 1000 ± 10mm	<b>FKHB-30R1000</b>

**UOM: pc**

Chain required 2-way (300, 500, 700, 1000): 1.1, 1.3, 1.5, 1.8 meter  
Slide rail required 2-way (300, 500, 700, 1000): 2.2, 2.6, 3.1, 3.7 meter

FK Horizontal Plain Bend 45°



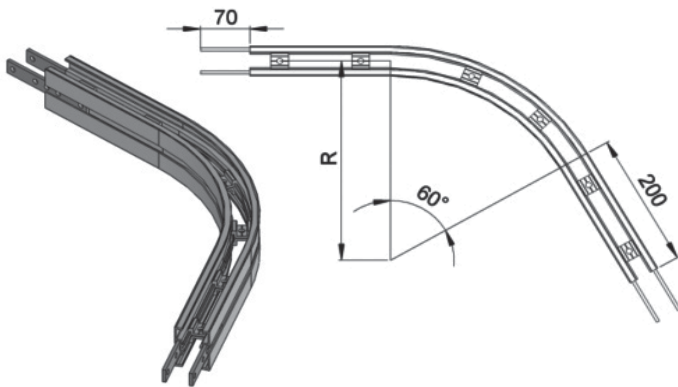
**Horizontal plain bend, 45° ± 1°**

- R = 300 ± 10mm      **FKHB-45R300**
- R = 500 ± 10mm      **FKHB-45R500**
- R = 700 ± 10mm      **FKHB-45R700**
- R = 1000 ± 10mm     **FKHB-45R1000**

**UOM: pc**

Chain required 2-way (300, 500, 700, 1000): 1.3, 1.6, 1.9, 2.4 meter  
 Slide rail required 2-way (300, 500, 700, 1000): 2.5, 3.2, 3.8, 4.7 meter

FK Horizontal Plain Bend 60°



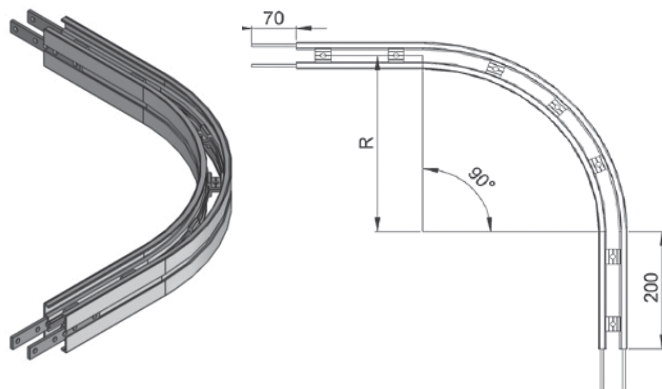
**Horizontal plain bend, 60° ± 1°**

- R = 300 ± 10mm      **FKHB-60R300**
- R = 500 ± 10mm      **FKHB-60R500**
- R = 700 ± 10mm      **FKHB-60R700**
- R = 1000 ± 10mm     **FKHB-60R1000**

**UOM: pc**

Chain required 2-way (300, 500, 700, 1000): 1.4, 1.8, 2.3, 2.9 meter  
 Slide rail required 2-way (300, 500, 700, 1000): 2.9, 3.7, 4.5, 5.8 meter

FK Horizontal Plain Bend 90°



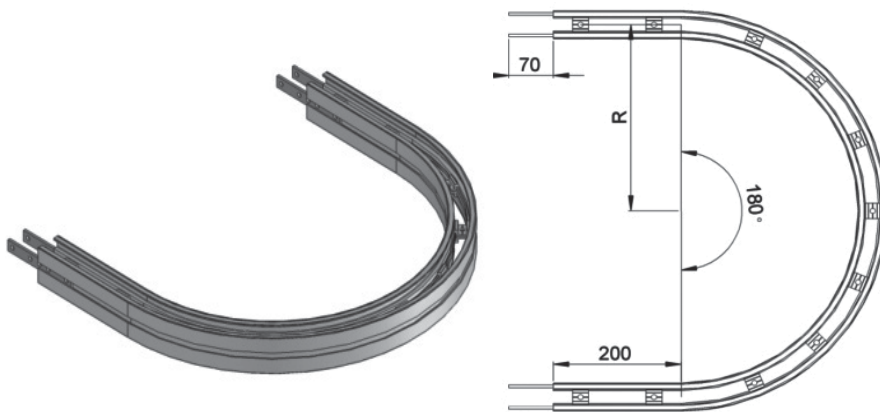
**Horizontal plain bend, 90° ± 1°**

- R = 300 ± 10mm      **FKHB-90R300**
- R = 500 ± 10mm      **FKHB-90R500**
- R = 700 ± 10mm      **FKHB-90R700**
- R = 1000 ± 10mm     **FKHB-90R1000**

**UOM: pc**

Chain required 2-way (300, 500, 700, 1000): 1, 1.1, 1.2, 1.3 meter  
 Slide rail required 2-way (300, 500, 700, 1000): 1.9, 2.1, 2.3, 2.6 meter

## FK Horizontal Plain Bend 180°



### Horizontal plain bend, 180° ± 1°

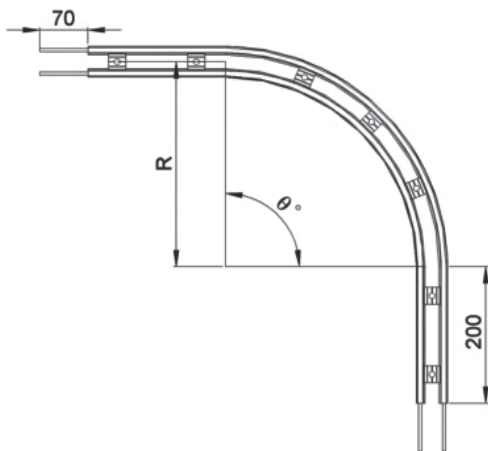
R = 300 ± 10mm	<b>FKHB-180R300</b>
R = 500 ± 10mm	<b>FKHB-180R500</b>
R = 700 ± 10mm	<b>FKHB-180R700</b>
R = 1000 ± 10mm	<b>FKHB-180R1000</b>

### UOM: pc

Chain required 2-way (300, 500, 700, 1000): 2.7, 3.9, 5.2, 7.1 meter

Slide rail required 2-way (300, 500, 700, 1000): 5.4, 7.9, 10.4, 14.2 meter

## FK Horizontal Plain Bend 5-180°



### Example for FK Horizontal Plain Bend Ordering

#### Horizontal plain bend, $\theta^\circ \pm 1^\circ$

R = 300 ± 10mm	<b>FKHB- <math>\theta^\circ</math>R300</b>
R = 500 ± 10mm	<b>FKHB- <math>\theta^\circ</math>R500</b>
R = 700 ± 10mm	<b>FKHB- <math>\theta^\circ</math>R700</b>
R = 1000 ± 10mm	<b>FKHB- <math>\theta^\circ</math>R1000</b>

If an angle of 120° is needed for radius R500 horizontal plain bend, so the ordering part number is

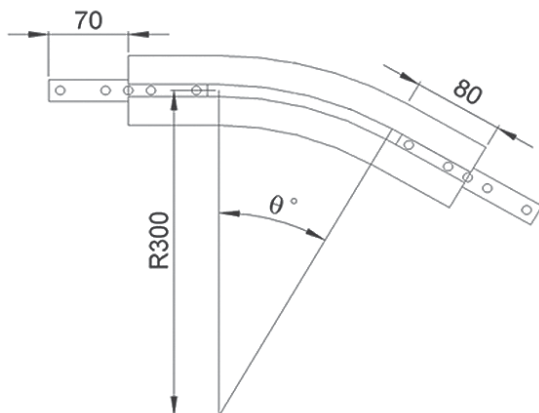
**FKHB-120R500**

### UOM: pc

Chain required 2-way (300, 500, 700, 1000): meter (Variable to angle)

Slide rail required 2-way (300, 500, 700, 1000): meter (Variable to angle)

## FK Vertical Bend 5° - 90°



### Example for FK Vertical Bend Ordering

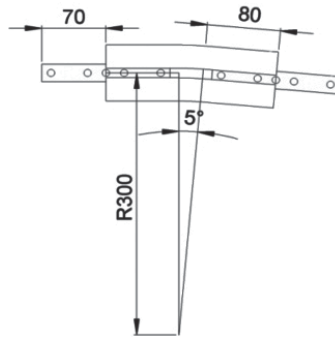
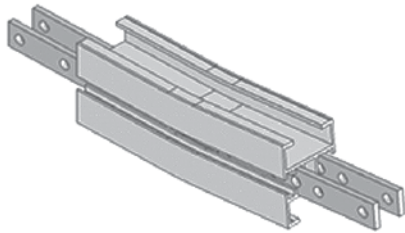
- Vertical bend,  $\theta^\circ \pm 1^\circ$
- FKVB- $\theta^\circ$ R300

If an angle of 65° is needed for vertical bend, so the ordering part number is

**FKVB-65R300**

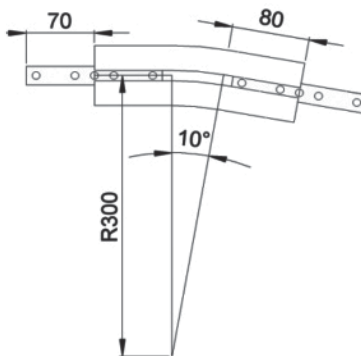
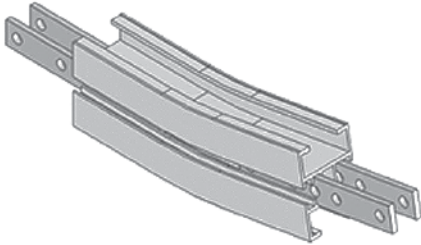
*The outer bend is assembled using connecting strip (FACS-20x140). Angle of  $\theta^\circ$  must be indicated when ordering.*

FK Vertical Bend 5° FKVB-5R300



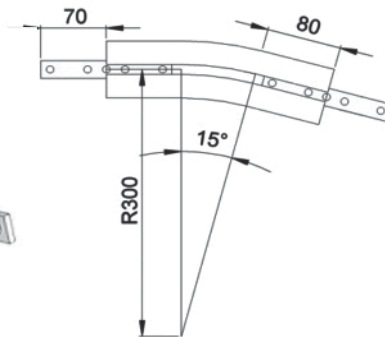
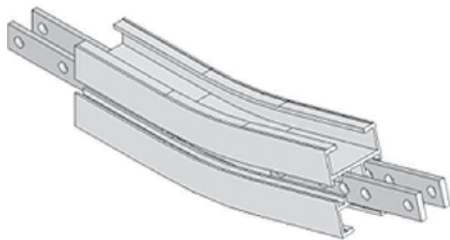
**UOM: pc**  
 Chain required 2-way: 0.4 meter  
 Slide rail required 2-way: 0.7 meter

FK Vertical Bend 10° FKVB-10R300



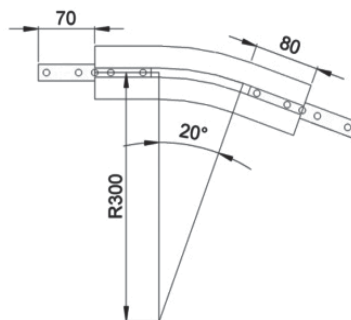
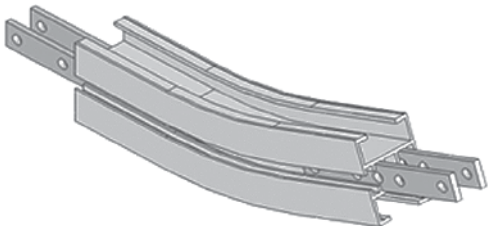
**UOM: pc**  
 Chain required 2-way: 0.4 meter  
 Slide rail required 2-way: 0.8 meter

FK Vertical Bend 15° FKVB-15R300



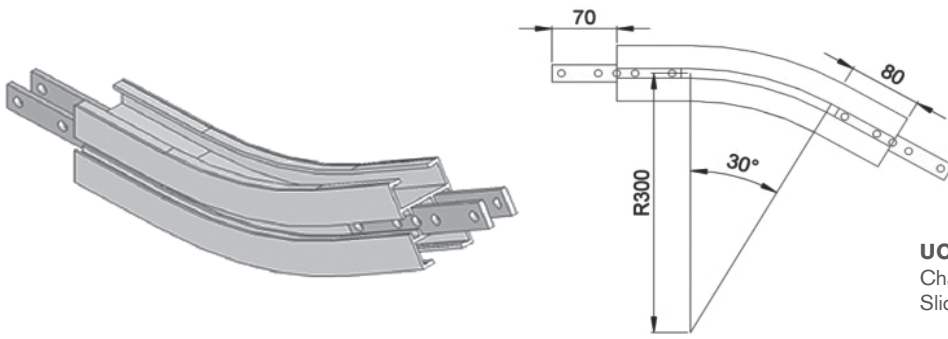
**UOM: pc**  
 Chain required 2-way: 0.5 meter  
 Slide rail required 2-way: 1.0 meter

FK Vertical Bend 20° FKVB-20R300



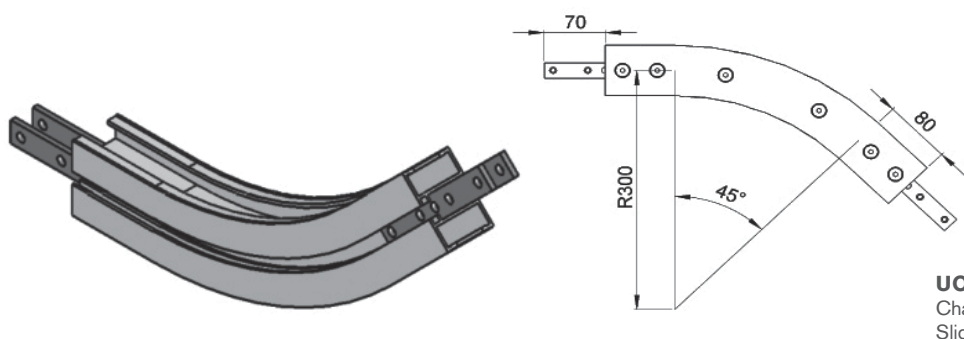
**UOM: pc**  
 Chain required 2-way: 0.5 meter  
 Slide rail required 2-way: 1.1 meter

**FK Vertical Bend 30°** **FKVB-30R300**



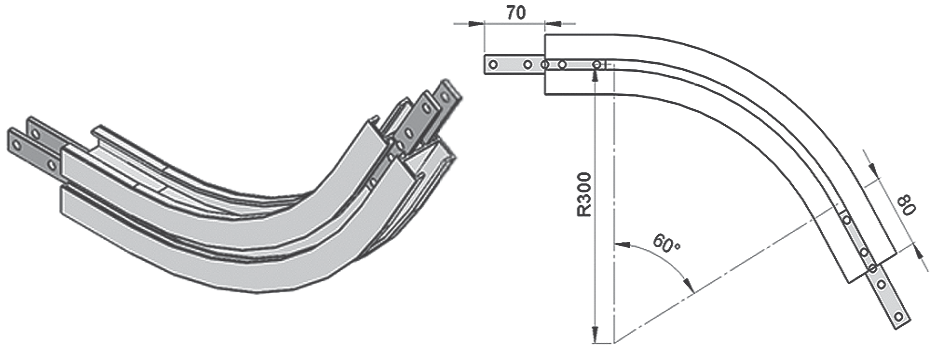
**UOM: pc**  
 Chain required 2-way: 0.6 meter  
 Slide rail required 2-way: 1.3 meter

**FK Vertical Bend 45°** **FKVB-45R300**



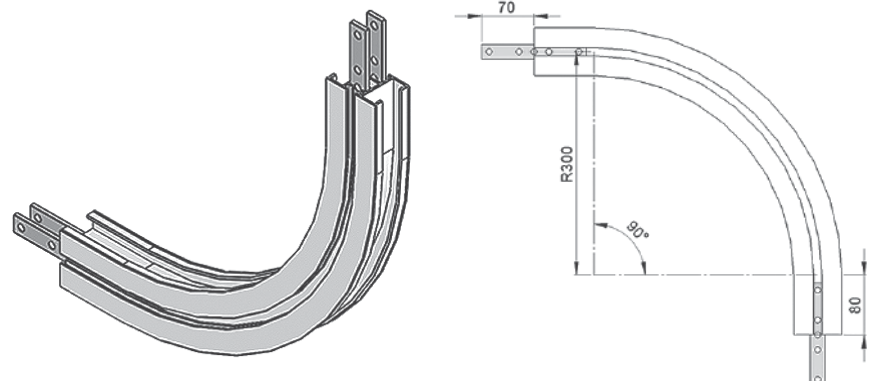
**UOM: pc**  
 Chain required 2-way: 0.8 meter  
 Slide rail required 2-way: 1.6 meter

**FK Vertical Bend 60°** **FKVB-60R300**



**UOM: pc**  
 Chain required 2-way: 0.9 meter  
 Slide rail required 2-way: 1.9 meter

**FK Vertical Bend 90°** **FKVB-90R300**



**UOM: pc**  
 Chain required 2-way: 1.3 meter  
 Slide rail required 2-way: 2.5 meter