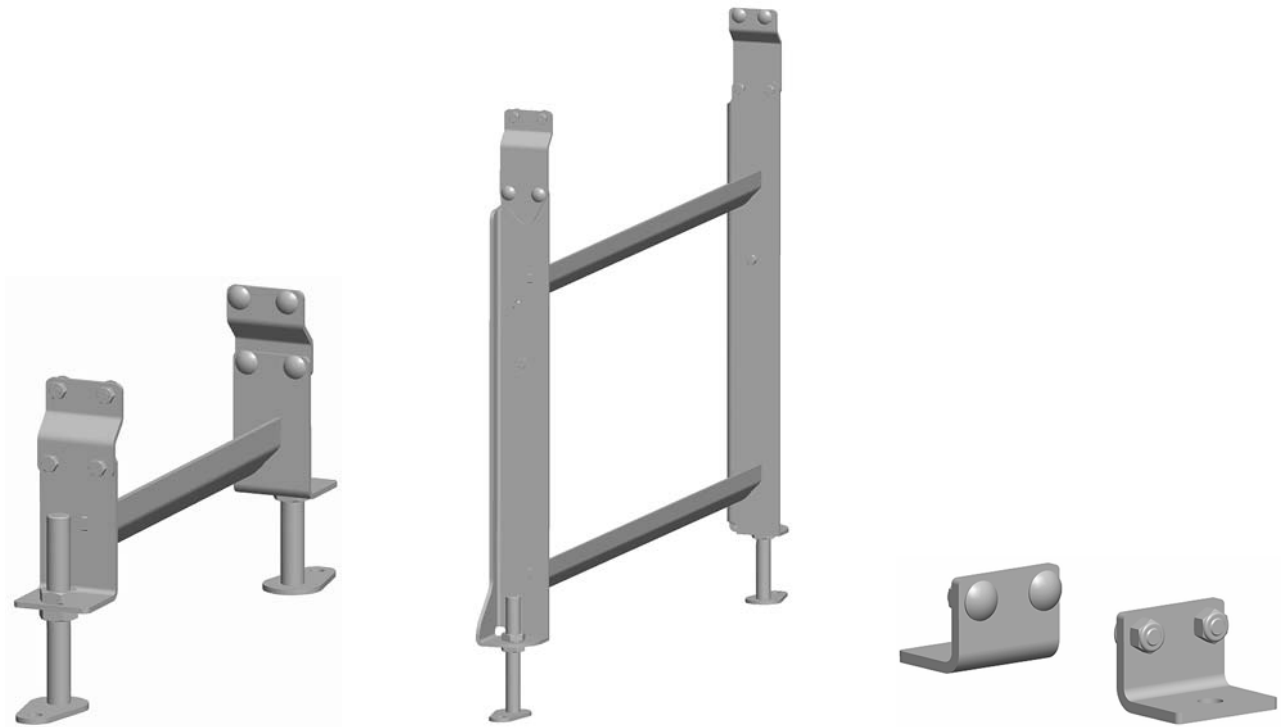




# 7350 Series Version 2 Support Stands

Installation, Maintenance & Parts Manual



For other service manuals visit our website at:  
[www.dornerconveyors.com/manuals-literature](http://www.dornerconveyors.com/manuals-literature)

Record Conveyor Serial Number Here

# Warnings - General Safety

## ⚠ WARNING

The safety alert symbol, black triangle with white exclamation, is used to alert you to potential personal injury hazards.

## ⚠ DANGER



Climbing, sitting, walking or riding on conveyor will cause severe injury.  
**KEEP OFF CONVEYORS.**

## ⚠ DANGER



**DO NOT OPERATE CONVEYORS IN AN EXPLOSIVE ENVIRONMENT.**

## ⚠ DANGER



Supports marked with this symbol must be anchored to the floor. Supports not anchored to floor will tip, causing severe injury or death.  
**SUPPORT MUST BE ANCHORED TO FLOOR.**

## ⚠ WARNING



**LOCK OUT POWER** before removing guards or performing maintenance. Exposed moving parts can cause serious injury.

## ⚠ WARNING



Loosening stand height or angle adjustment screws may cause conveyor sections to drop down, causing severe injury.

**SUPPORT CONVEYOR SECTIONS PRIOR TO LOOSENING STAND HEIGHT OR ANGLE ADJUSTMENT SCREWS.**

## ⚠ WARNING



Dorner cannot control the physical installation and application of conveyors. Taking protective measures is the responsibility of the user.

When conveyors are used in conjunction with other equipment or as part of a multiple conveyor system, **CHECK FOR POTENTIAL PINCH POINTS** and other mechanical hazards before system start-up.

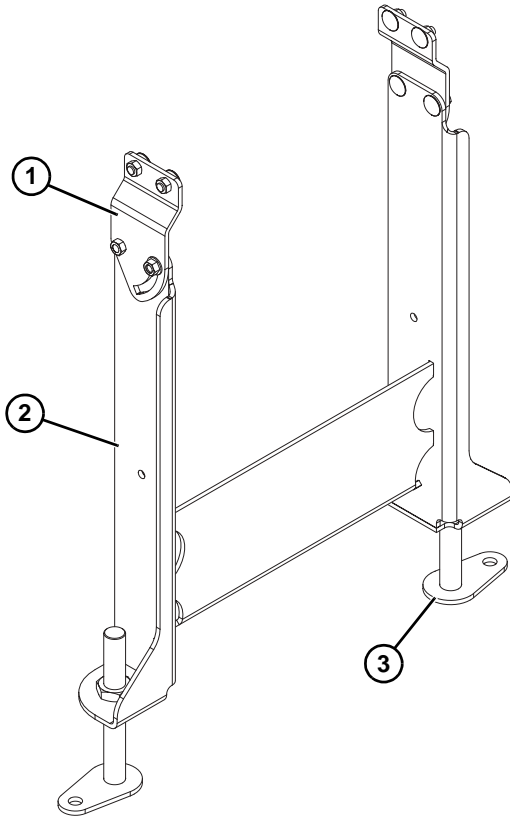
---

# Product Description

---

Refer to **Figure 1** for typical stand components.

1	Pivot Plate
2	Support Stand
3	Foot Pad



**Figure 1**

# Installation

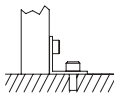
## Required Tools

- Level
- 13 mm wrench
- 17 mm wrench
- 24 mm wrench
- 30 mm wrench or large adjustable wrench

## Recommended Installation Sequence

- Attach the stand(s) to the conveyor.
- Attach the diagonal bracing, if applicable.
- Adjust the stand height and level. Refer to “Stand Height Adjustment” on page 7.

## Attach Stands to Conveyor

<b>⚠ DANGER</b>

<b>Supports marked with this symbol must be anchored to the floor. Supports not anchored to floor will tip, causing severe injury or death.</b> <b>SUPPORT MUST BE ANCHORED TO FLOOR.</b>

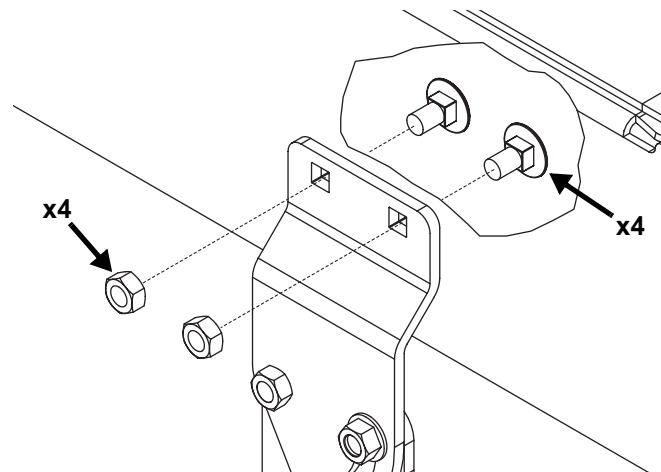
## Support Stands

1. Properly support the conveyor or place the conveyor upside down on a flat surface.

<b>⚠ WARNING</b>

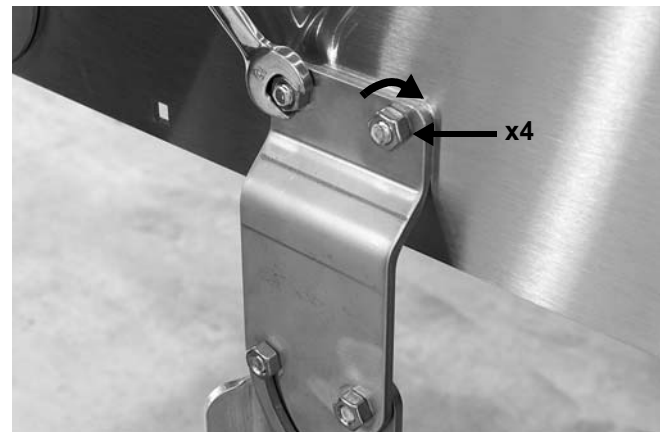
<b>Failure to secure nuts may cause conveyor sections to drop down causing severe injury.</b> <b>TIGHTEN NUTS AFTER ADJUSTMENT.</b>

2. Attach the stand to the conveyor.



**Figure 2**

3. Tighten the nuts.



**Figure 3**

4. Repeat for the other stands.

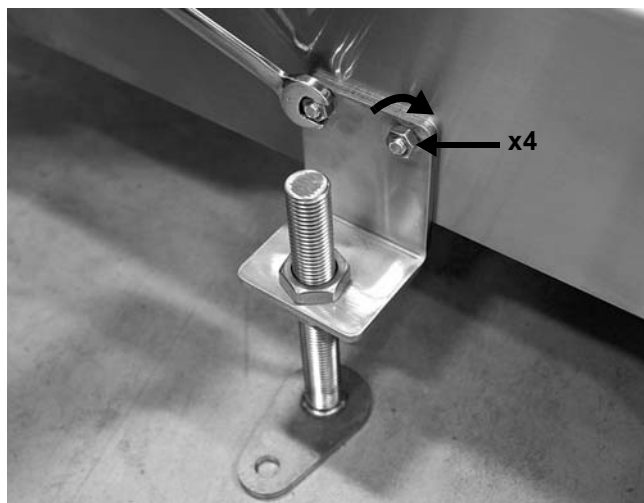
## Low Height Stands

1. Properly support the conveyor or place the conveyor upside down on a flat surface.

<b>⚠ WARNING</b>

<b>Failure to secure nuts may cause conveyor sections to drop down causing severe injury. TIGHTEN NUTS AFTER ADJUSTMENT.</b>

2. Attach the stand to the conveyor.



**Figure 4**

3. Tighten the nuts.
4. Repeat for the other stands.

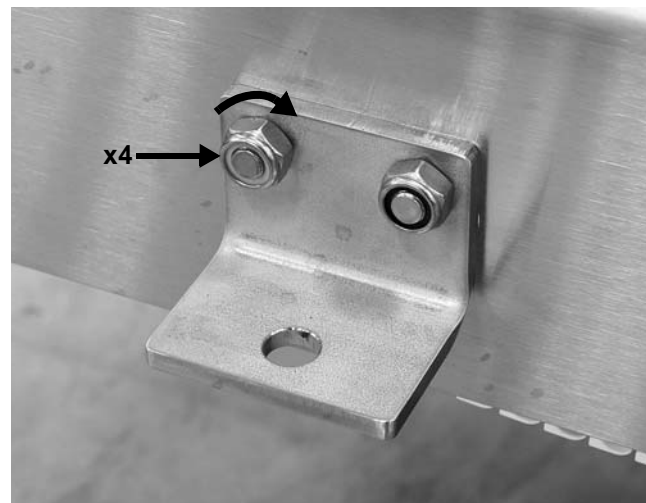
## Ceiling Supports

1. Properly support the conveyor or place the conveyor upside down on a flat surface.

<b>⚠ WARNING</b>

<b>Failure to secure nuts may cause conveyor sections to drop down causing severe injury. TIGHTEN NUTS AFTER ADJUSTMENT.</b>

2. Attach the ceiling support to the conveyor.



**Figure 5**

3. Tighten the nuts.
4. Repeat for the other ceiling supports.

---

# Installation

---

## Diagonal Brace Attachment

NOTE
<i>Tall stands come equipped with a threaded bushing for attaching the brace to the stand.</i>

1. Attach the brace to the stand.



**Figure 6**

2. Attach the brace to the conveyor.



**Figure 7**

3. Repeat for the opposite leg.
4. Tighten all hardware.

# Preventive Maintenance and Adjustment

## Required Tools


- Level
- 13 mm wrench
- 17 mm wrench
- 24 mm wrench
- 30 mm wrench or large adjustable wrench

## Stand Height Adjustment

### Stands

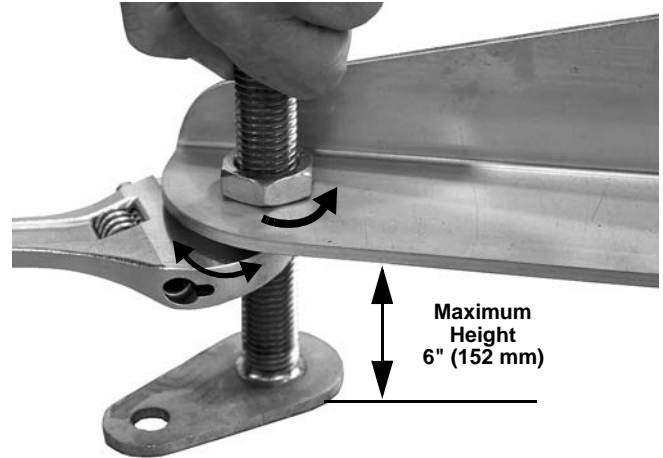
<b>⚠ WARNING</b>

<b>SEVERE HAZARD!</b> <b>DO NOT EXCEED THE MAXIMUM HEIGHT OF 6" (152 mm) from the floor to the bottom of the stand.</b> Exceeding the maximum height will allow parts to separate and may cause serious injury.

<b>⚠ WARNING</b>

Loosening stand height or angle adjustment nuts may cause conveyor sections to drop down, causing severe injury. <b>SUPPORT CONVEYOR SECTIONS PRIOR TO LOOSENING STAND HEIGHT OR ANGLE ADJUSTMENT NUTS.</b>

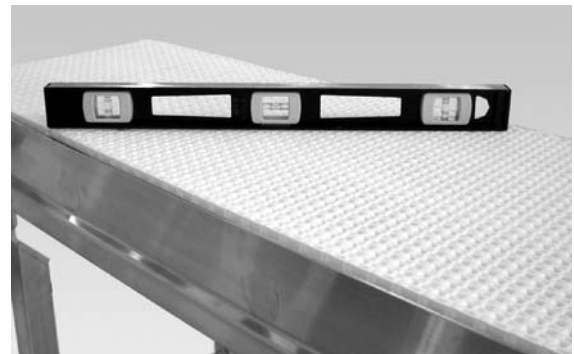
### Support Stands

1. Support conveyor.
2. Loosen the upper nut. Rotate the lower nut up or down to raise or lower the stand.



*Figure 8*

3. Repeat steps on the opposite stand leg.
4. Level the stand.



*Figure 9*

# Preventive Maintenance and Adjustment

**⚠ WARNING**



Failure to secure nuts may cause conveyor sections to drop down causing severe injury. **TIGHTEN NUTS AFTER ADJUSTMENT.**

5. Tighten the upper nut to secure each foot assembly.



Figure 10

## Tall Stands

1. Support conveyor.
2. Loosen the nut on the foot stem. Rotate the foot stem to raise or lower the stand.

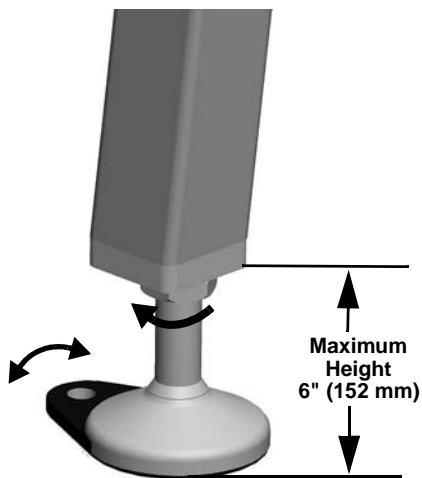


Figure 11

3. Repeat steps on the opposite stand leg.

4. Level the stand.

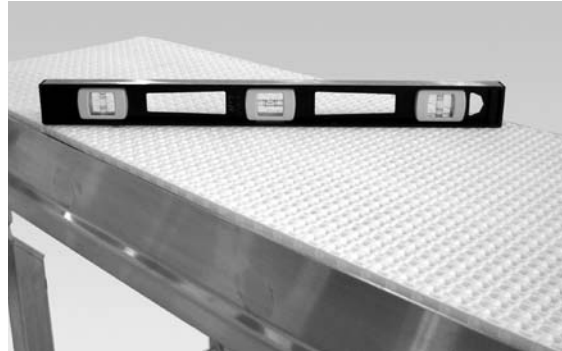


Figure 12

**⚠ WARNING**



Failure to secure nuts may cause conveyor sections to drop down causing severe injury. **TIGHTEN NUTS AFTER ADJUSTMENT.**

5. Tighten the nut to secure each foot assembly.

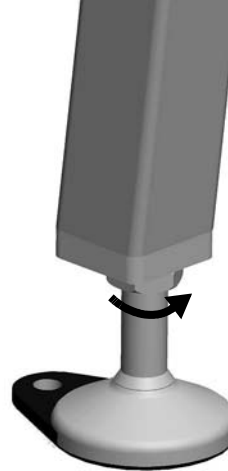



Figure 13

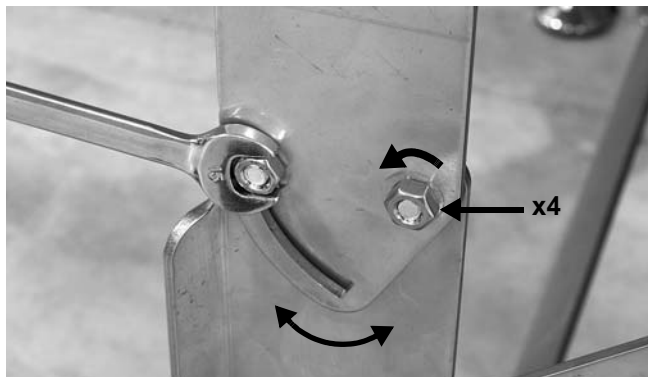


# Preventive Maintenance and Adjustment

## Conveyor Angle Adjustment

<b>⚠ WARNING</b>

<p>Loosening stand height or angle adjustment nuts may cause conveyor sections to drop down, causing severe injury. <b>SUPPORT CONVEYOR SECTIONS PRIOR TO LOOSENING STAND HEIGHT OR ANGLE ADJUSTMENT NUTS.</b></p>

1. For slotted brackets, loosen the nuts and adjust the bracket to the same angle as the conveyor.



**Figure 14**

<b>⚠ WARNING</b>

<p>Failure to secure nuts may cause conveyor sections to drop down causing severe injury. <b>TIGHTEN NUTS AFTER ADJUSTMENT.</b></p>

2. Tighten the nuts.

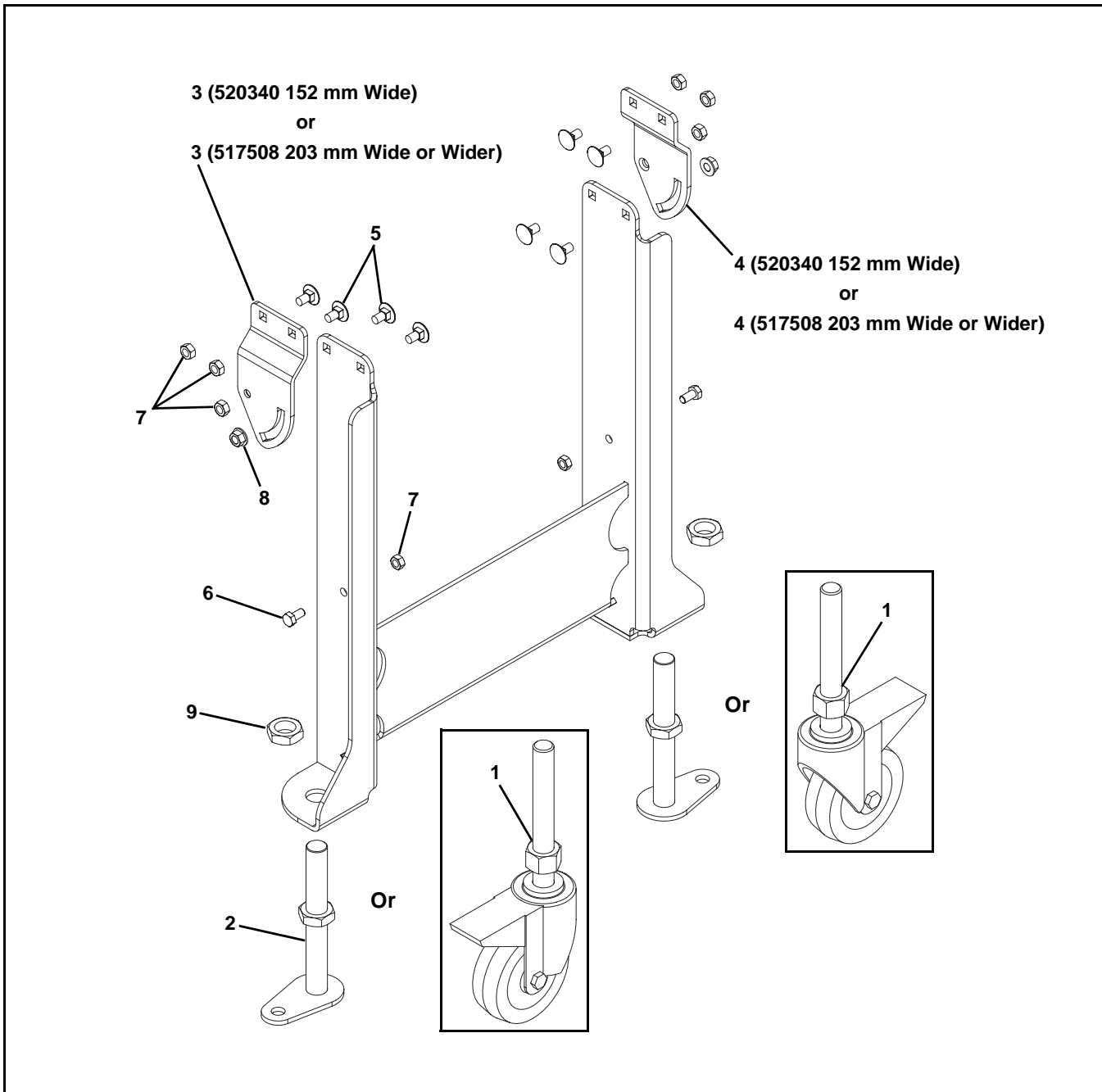


**Figure 15**

3. Adjust the stand height. Refer to “Stand Height Adjustment” on page 7.

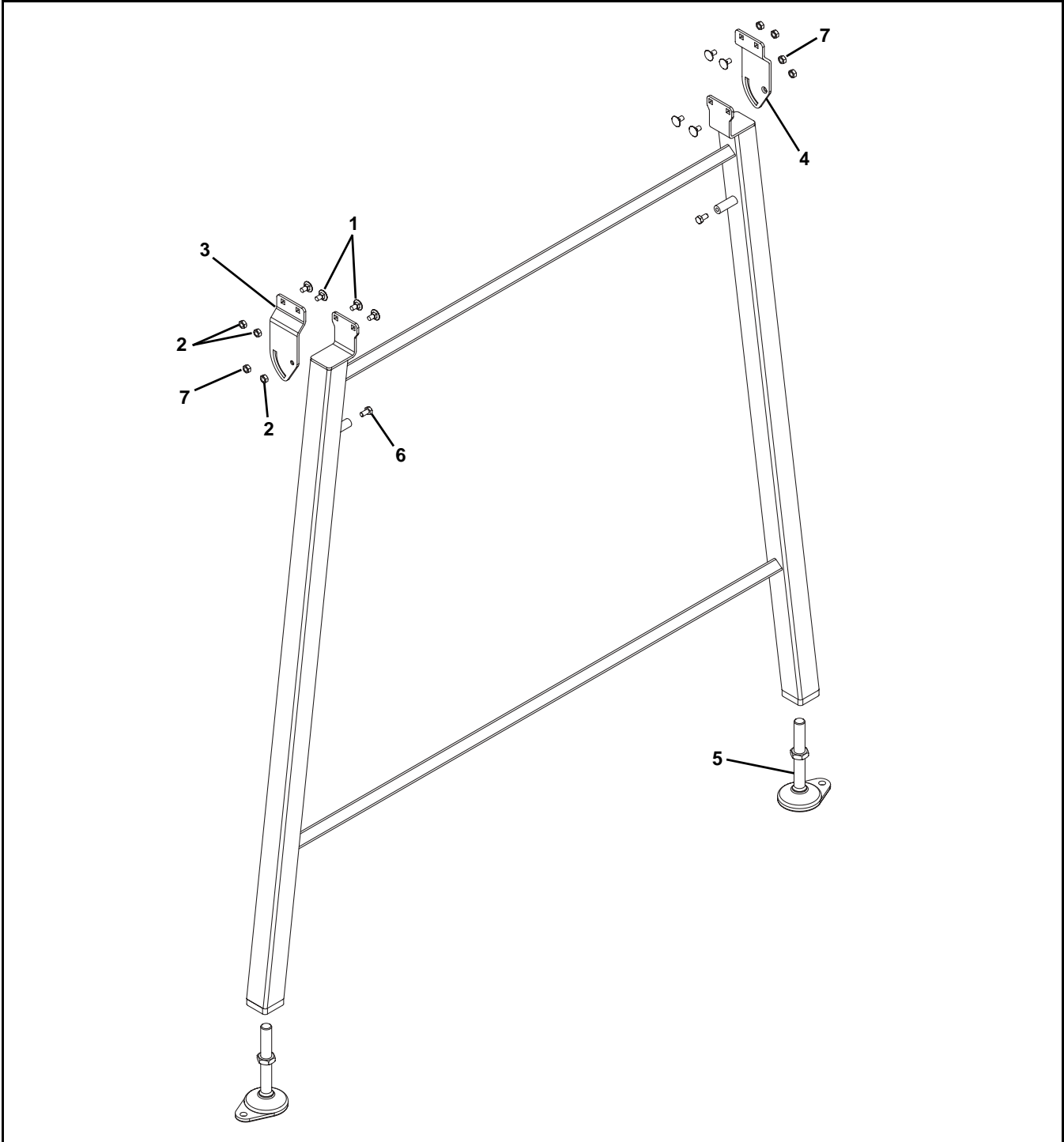
# Service Parts

## Support Stands



Item	Part Number
1	458309
2	532036
3	517508-LH 520340-LH
4	517508-RH 520340-RH
5	807-3543
6	960816MSS
7	990801MSS
8	990813MSS
9	992010MSS

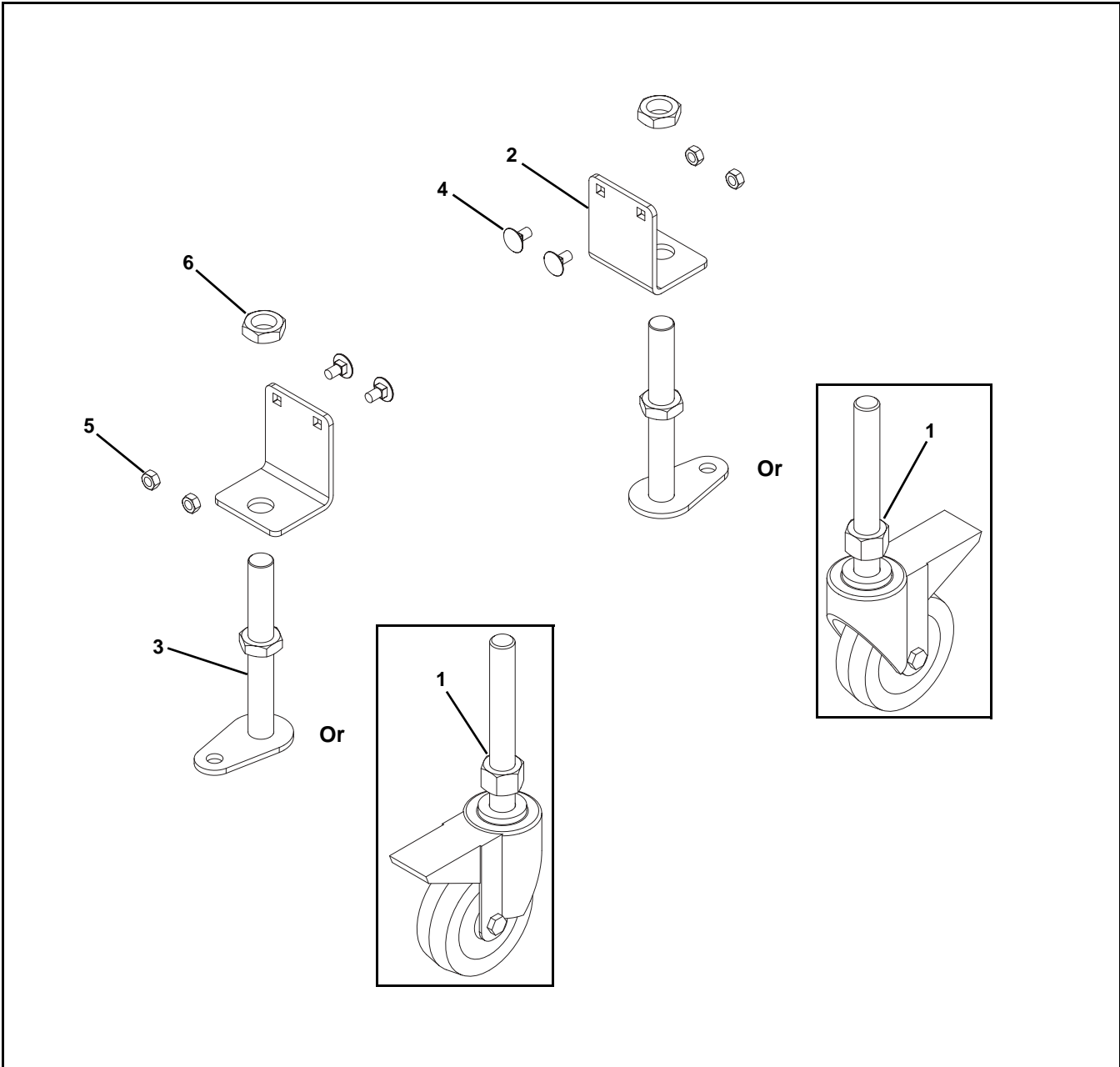
Tall Support Stands



Item	Part Number
1	807-3543
2	990801MSS
3	517508-LH
4	517508-RH
5	807-1321
6	960816MSS
7	990813MSS

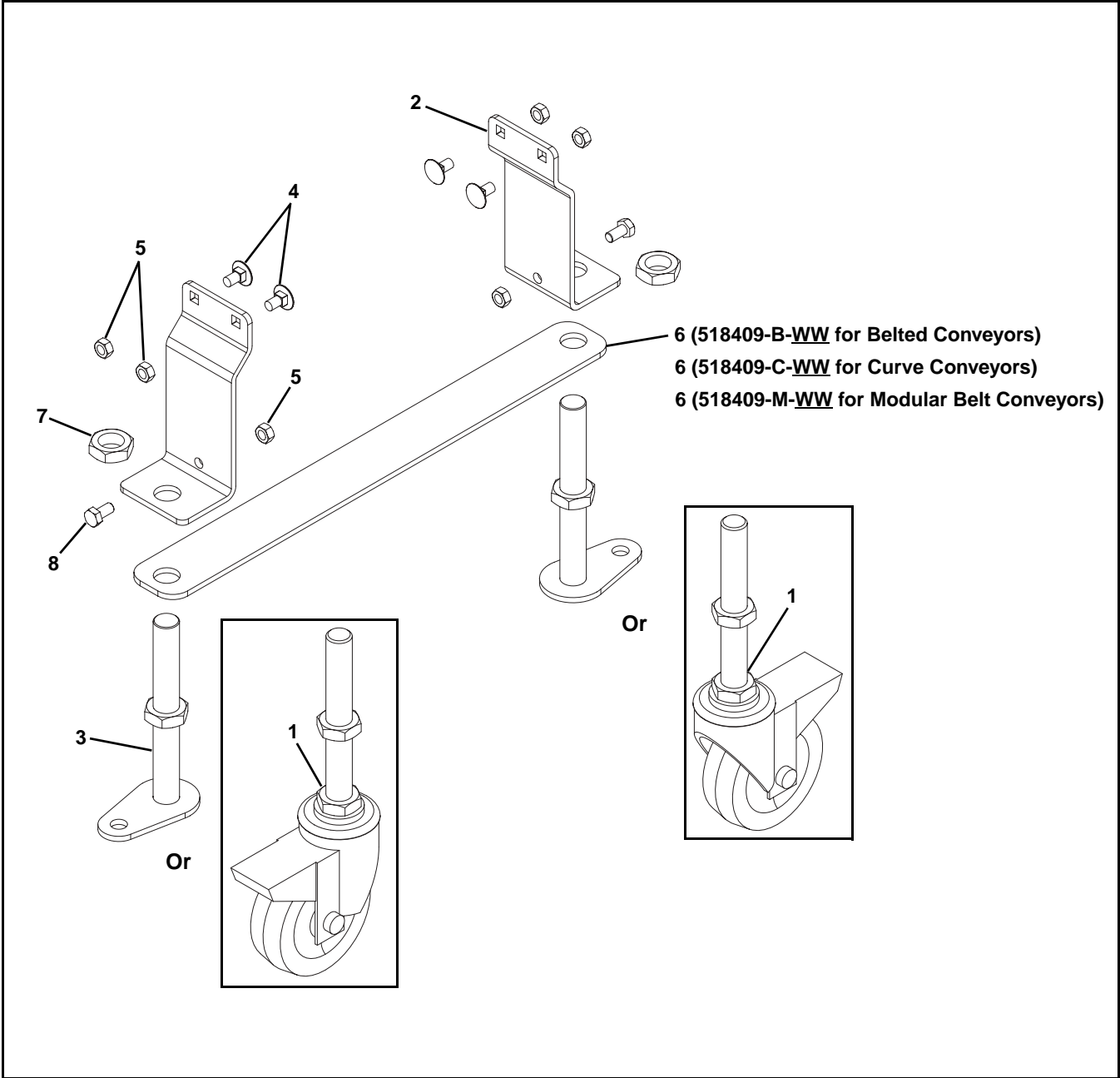
# Service Parts

## Low Height Bracket Style Stands



Item	Part Number
1	458309
2	518404
3	532036
4	807-3543
5	990801MSS
6	992010MSS

## Low Height Stands

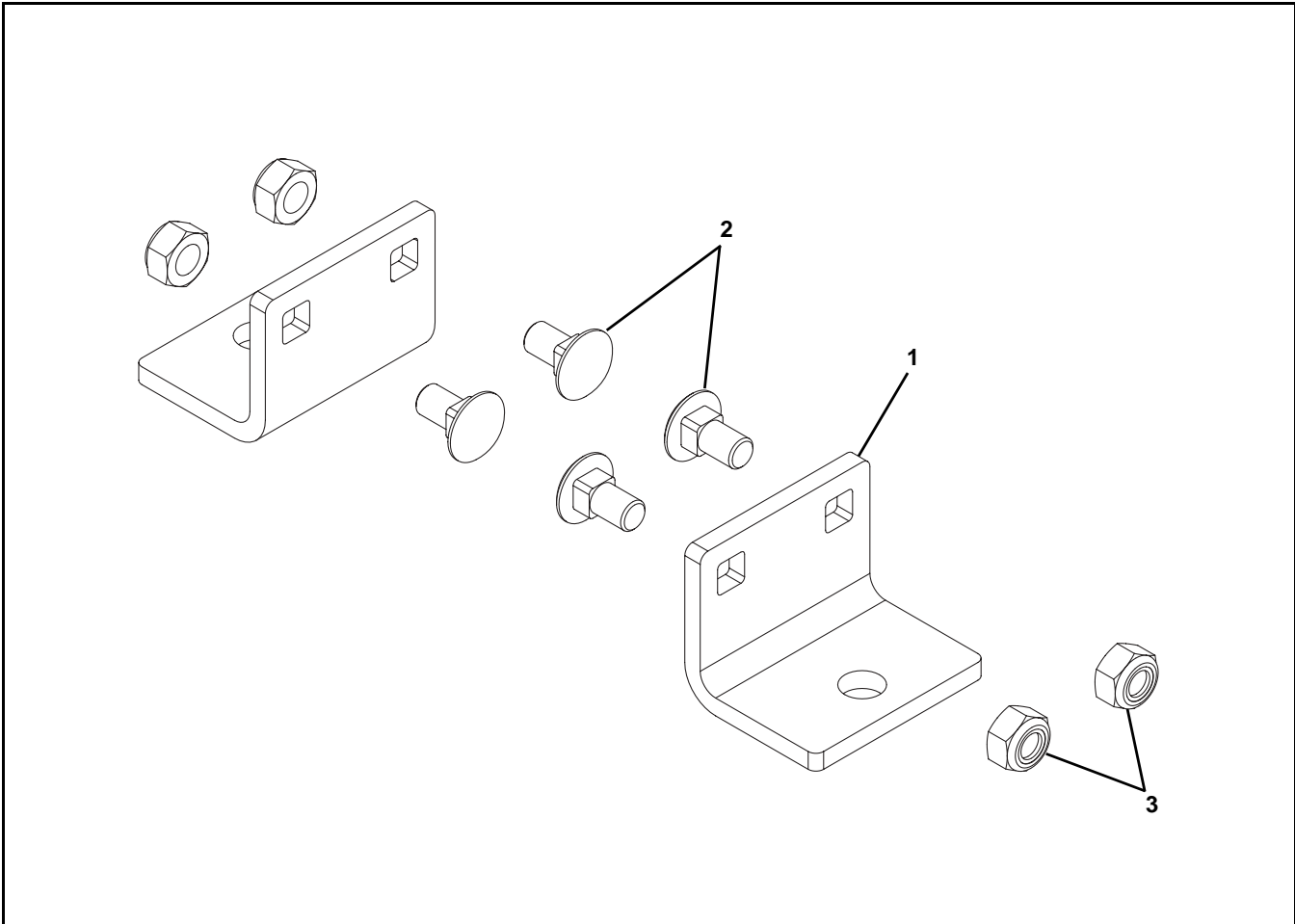


Item	Part Number
1	458309
2	518405
3	532036
4	807-3543
5	990801MSS
6	518409-B- <u>WW</u>
	518409-C- <u>WW</u>
	518409-M- <u>WW</u>
7	992010MSS
8	960816MSS

WW = Conveyor width reference in inches 06 - 36 in 02 increments

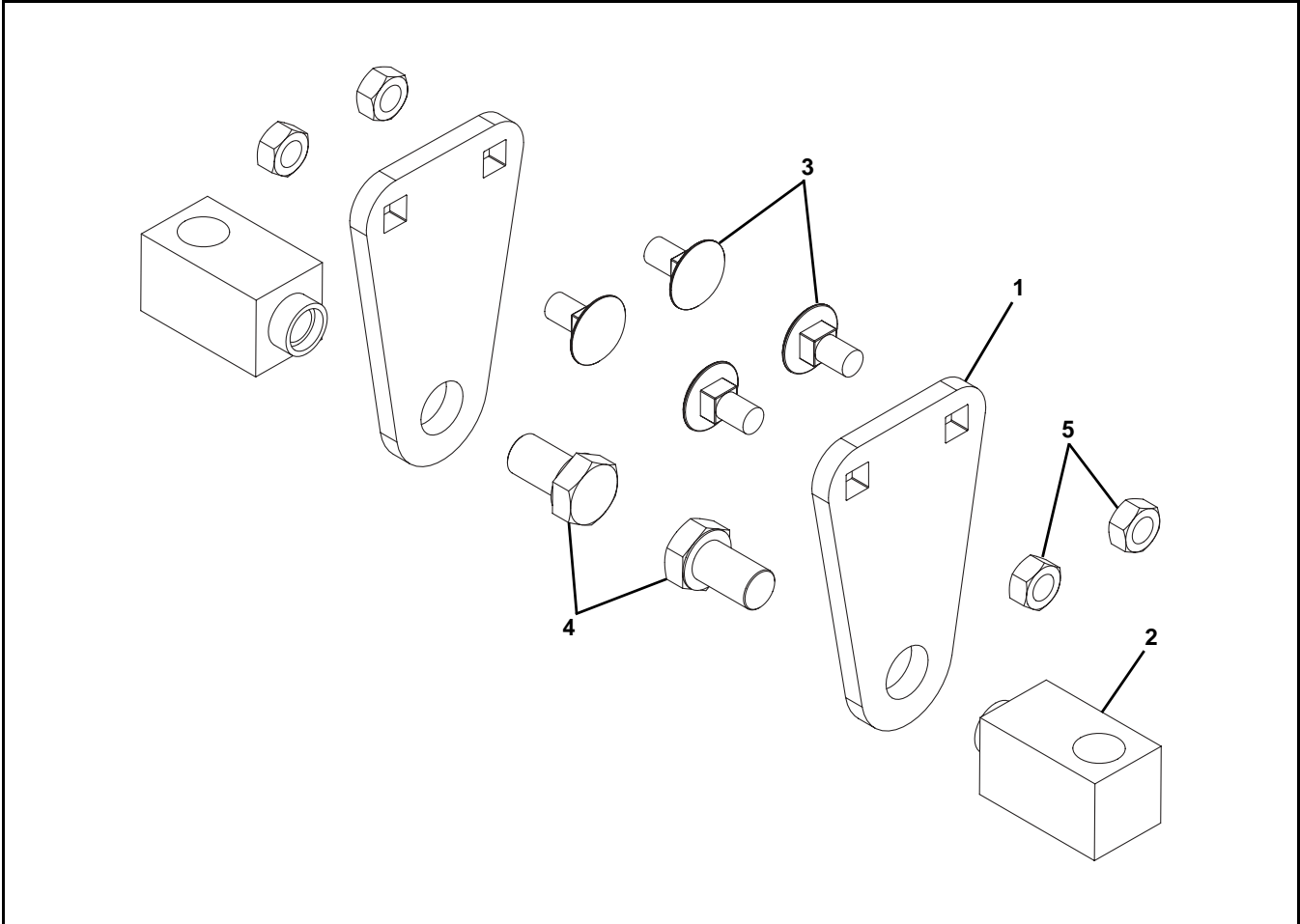
# Service Parts

## Ceiling Supports - Horizontal Mount



Item	Part Number
1	518372
2	807-3540
3	990802MSS

Ceiling Supports - Angle Mount



Item	Part Number
1	520321
2	532324
3	807-3543
4	961220MSS
5	990801MSS

# Return Policy

Returns must have prior written factory authorization or they will not be accepted. Items that are returned to Dorner without authorization will not be credited nor returned to the original sender. When calling for authorization, please have the following information ready for the Dorner factory representative or your local distributor:

1. Name and address of customer.
2. Dorner part number(s) of item(s) being returned.
3. Reason for return.
4. Customer's original order number used when ordering the item(s).
5. Dorner or distributor invoice number. Include part serial number if available.

A representative will discuss action to be taken on the returned items and provide a Returned Materials Authorization (RMA) number for reference. RMA will automatically close 30 days after being issued. To get credit, items must be new and undamaged. There will be a return charge on all items returned for credit, where Dorner was not at fault. It is the customer's responsibility to prevent damage during return shipping. Damaged or modified items will not be accepted. The customer is responsible for return freight.

Product Line	Product Type								Engineered to order parts
	Standard Products								
	Conveyors	Gearmotors & Mounting Packages	Support Stands	Accessories	Spare Parts (non-belt)	Spare Belts - Standard Flat Fabric	Spare Belts - Cleated & Spec. Fabric	Spare Belts - Plastic Chain	All equipment and parts
1100 Series	30% return fee for all products except: 50% return fee for conveyors with modular belt, cleated belt or speciality belts  All Electrical items are assigned original manufacturers return policy.						non-returnable		case-by-case
2200 Series									
3200 Series									
Pallet Systems									
FlexMove/SmartFlex									
GAL Series									
All Electrical									
7100 Series	50% return fee for all products						non-returnable		case-by-case
7200/7300 Series									
AquaGard 7350 Series Version 2									
GES Series									
AquaGard 7350/7360 Series	non-returnable								
AquaPruf Series	non-returnable								

Returns will not be accepted after 60 days from original invoice date. The return charge covers inspection, cleaning, disassembly, disposal and reissuing of components to inventory. If a replacement is needed prior to evaluation of returned item, a purchase order must be issued. Credit (if any) is issued only after return and evaluation is complete.

Dorner has representatives throughout the world. Contact Dorner for the name of your local representative. Our Customer Service Team will gladly help with your questions on Dorner products.

For a copy of Dorner's Warranty, contact Dorner, an authorized sales channel or visit our website: [www.dorner.com](http://www.dorner.com).

For replacement parts, contact an authorized Dorner Service Center or the factory.

[www.dorner.com](http://www.dorner.com)



© Dorner Mfg. Corp. 2018. All Rights Reserved.

## Dorner – North & South America

### Dorner – U.S.A.

**Headquarters**  
 975 Cottonwood Ave  
 Hartland, WI 53029, USA  
 (800) 397-8664  
 (262) 367-7600  
[info@dorner.com](mailto:info@dorner.com)

### Dorner – Canada

100-5515 North Service Road  
 Burlington, Ontario L7L 6G6  
 Canada  
 (289) 208-7306  
[info@dorner.com](mailto:info@dorner.com)

### Dorner – Latin America

Carretera a Nogales #5297, Nave 11.  
 Parque Industrial Nogales  
 Zapopan, Jalisco C.P. 45222 México  
 +52.33.30037400 | [info.latinamerica@dorner.com](mailto:info.latinamerica@dorner.com)

### Dorner – Europe

Karl-Heinz-Beckurts-Straße 7  
 52428 Jülich, Germany  
 +49 (0) 2461/93767-0 | [info.europe@dorner.com](mailto:info.europe@dorner.com)

### Dorner – Asia

128 Jalan Permatang Damar Laut, Bayan Lepas 11960  
 Penang, Malaysia  
 +604-626-2948 | [info.asia@dorner.com](mailto:info.asia@dorner.com)