

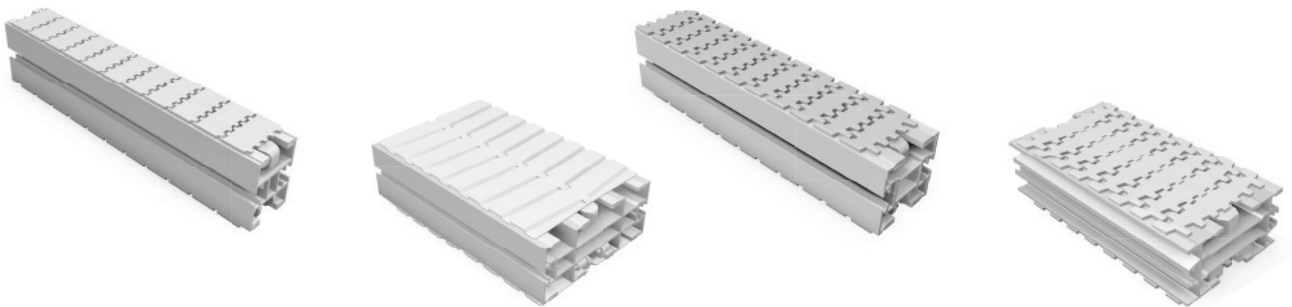
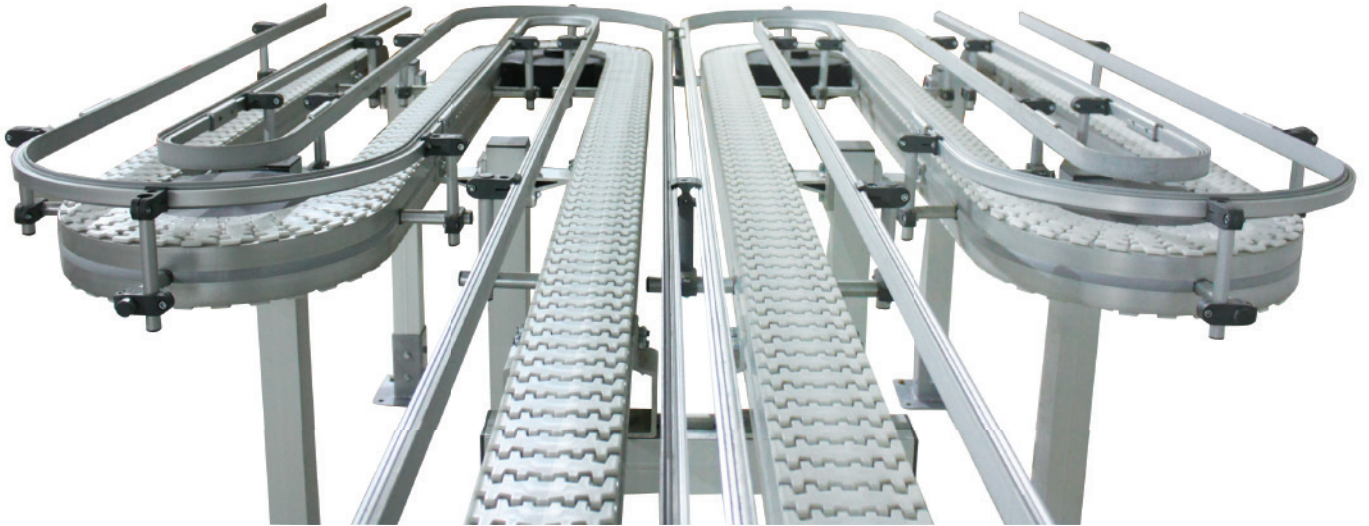
PRODUCT CATALOG

Complex Configurations
& Tight Spaces

High Speed Performance
- Up to 76 mpm

Reduces
Conveyor Footprint

Ideal for Curves,
Inclines & Declines



FlexMove®

High Performance, Aluminum, Flexible Chain Conveyors

DORNER® 

TRANSFERS

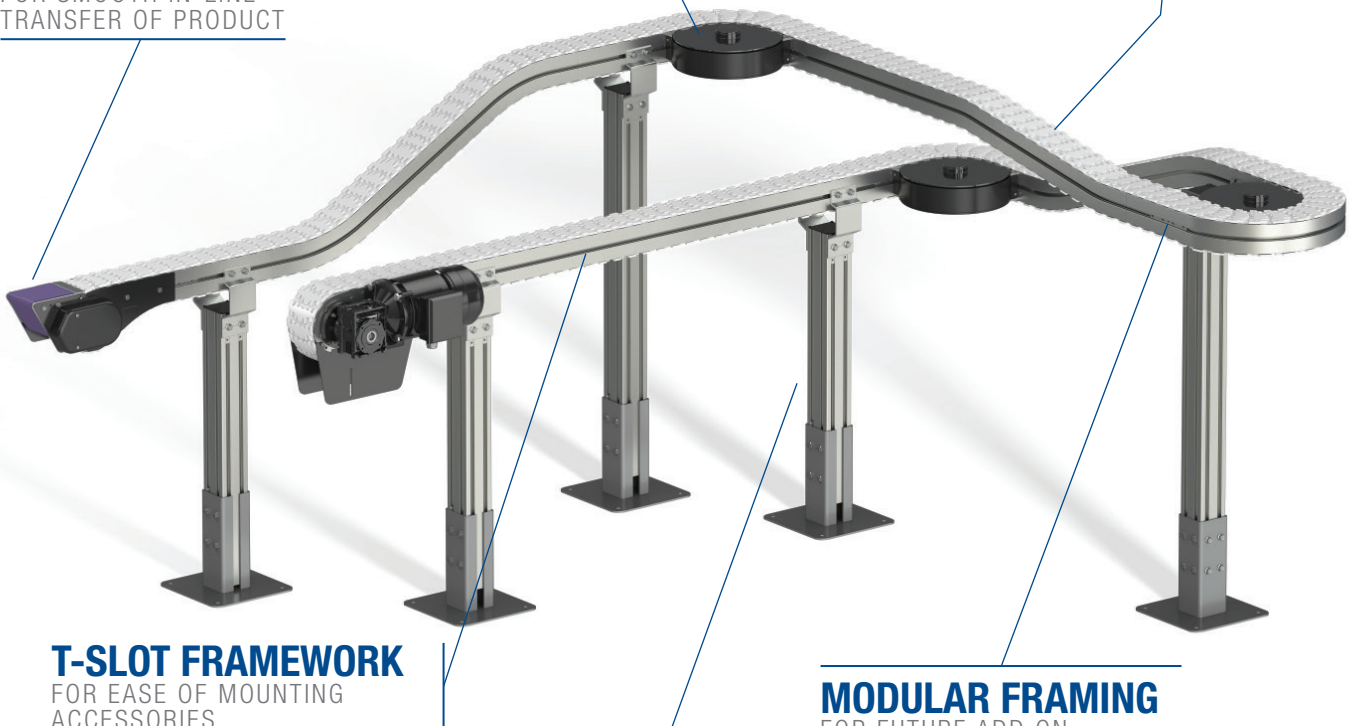
FOR SMOOTH IN-LINE
TRANSFER OF PRODUCT

WHEEL CORNERS

ELIMINATE CORNER
FRICTION ALLOWING
MULTIPLE CORNER
CONFIGURATIONS

VERTICAL BENDS

FOR SMOOTH ELEVATION
CHANGES AND EFFICIENT
USE OF VERTICAL SPACE



T-SLOT FRAMEWORK

FOR EASE OF MOUNTING
ACCESSORIES

SUPPORT POST

PROVIDE ADJUSTABLE
HEIGHT WHILE
OPTIMIZING THE USE
OF FLOOR SPACE

MODULAR FRAMING

FOR FUTURE ADD ON
CAPABILITY AND
PRODUCTION LINE CHANGES

The contents of this publication are the copyright of the publishers and may not be reproduced (even extracts) unless permission is granted. Every care has been taken to ensure the accuracy of the information but no liability can be accepted for any errors or omissions.

The right is reserved to make design modifications

Patents

Essential parts of the FlexMove product range are protected by patents and design regulations.

Drawings are made to European standards.

JULY 2019

FlexMove® Conveyors are best for:

- Part Handling
- Transfers
- Tight Spaces
- Elevation Changes
- Accumulation
- Buffering
- Complex Configurations
- Long Lengths
- Curves, Jogs, Incline, Decline

Sizes & Measurements

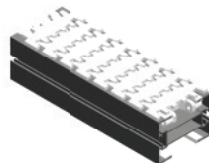
- 45 mm, 65 mm, 85 mm, 100 mm, 150 mm, 180 mm & 260 mm (1.7, 2.5, 3, 4, 6, 7 and 10 in) widths
- 0.6 m to 29.8 m (2 to 98 ft) lengths

Loads & Speeds

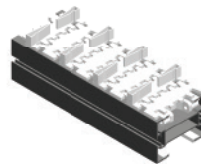
- Up to 272 kgs (600 lbs)
- Up to 76 meters (250 feet) per minute

Plastic Chain Types

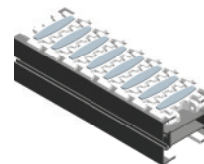
- Standard: Low Friction & Friction Insert
- Specialty
 - Conductive
 - Cleated
 - Roller Top
 - Magnet Top
 - And Many More



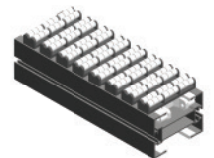
Flat



Cleated

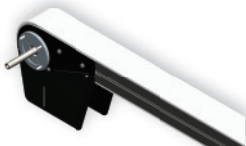


Friction Top



Roller Top

Modules



Drive



Idler



Curve
from 15° to 180°



Incline/Decline
from 5° to 90°

Guiding

- Fully Adjustable Single Rail
- Fully Adjustable Double Rail
- Other Options Available



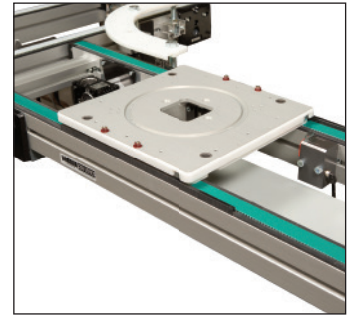
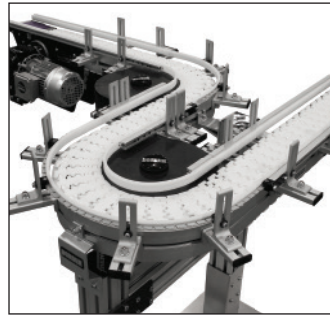
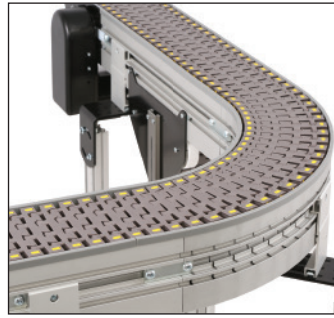
Support Stands

- Single, Double and Multi Lane Structures Available

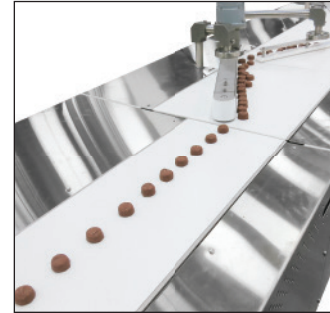
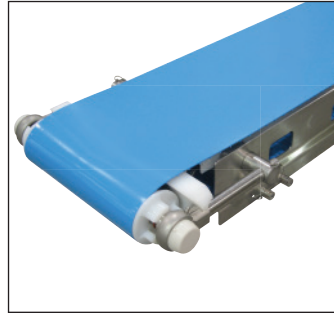
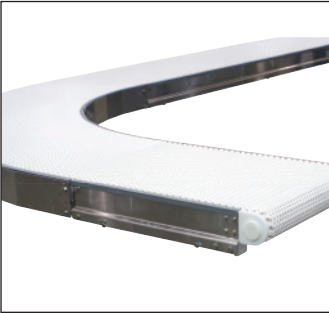


Transforming Conveyor Automation

Industrial & Automation Conveyors



Sanitary Conveyors



Engineered Solutions



Parts



Service



Online Configurator



Warranty

Dorner – Asia

128 Jalan Permatang Damar Laut, Bayan Lepas 11960
Penang, Malaysia
+604-626-2948 | info.asia@dorner.com

Dorner – Europe

Dorner – Germany
Karl-Heinz-Beckurts-Straße 7
52428 Jülich, Germany
+49 (0) 2461/93767-0
info.europe@dorner.com

Dorner – France
8-10 Rue de Nieuport
78140 Vélizy-Villacoublay,
France
+33 (0)1 84 73 24 27
info.france@dorner.com

Dorner – North & South America

Dorner – U.S.A.
Headquarters
975 Cottonwood Ave
Hartland, WI 53029, USA
(800) 397-8664
(262) 367-7600
info@dorner.com

Dorner – Canada
100-5515 North Service Road
Burlington, Ontario L7L 6G6
Canada
(289) 208-7306
info@dorner.com

Dorner – Latin America
Carretera a Nogales #5297, Nave 11.
Parque Industrial Nogales
Zapopan, Jalisco C.P. 45222 México
+52.33.30037400
info.latinamerica@dorner.com



www.dornerconveyors.com