



SmartFlex – FlexMove Consolidation

TRAINING WEBINAR

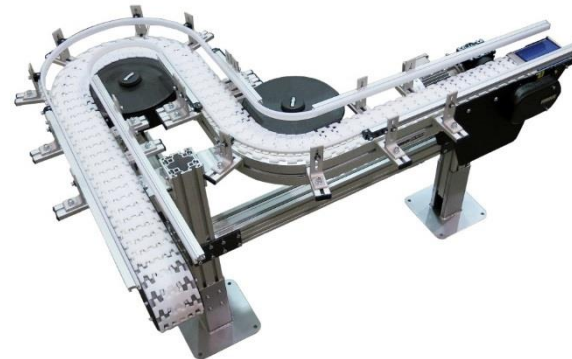
Short History Lesson...

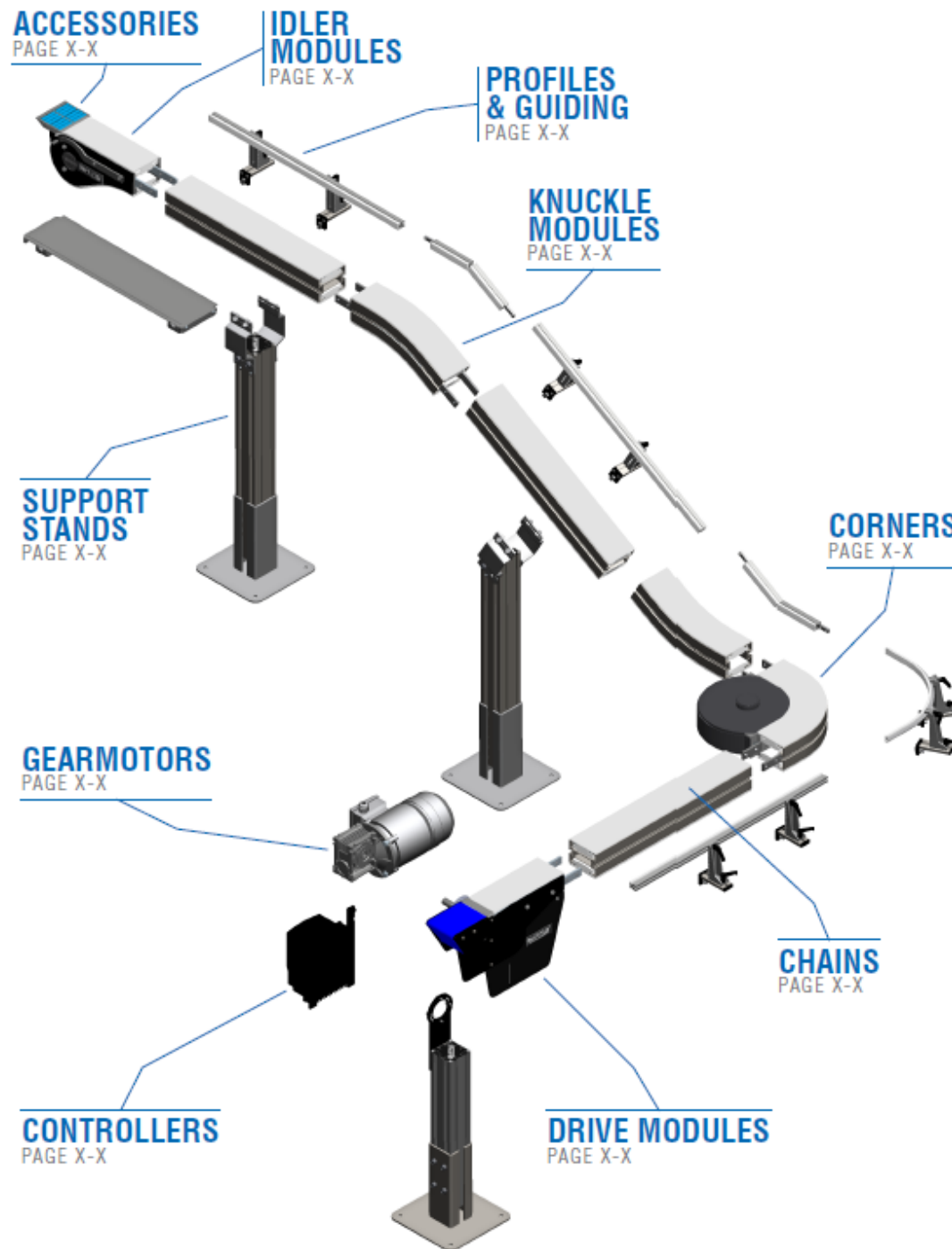
- ❑ SmartFlex product line was launched in US in 2015 with a Dorner / FlexMove Partnership
- ❑ SmartFlex was/is offered as an assembled product only
- ❑ Dorner purchased FlexMove company in 2017
- ❑ Dorner offered FlexMove component sales in US in 2018
- ❑ FlexMove and SmartFlex lines are +90% the same but not in all areas
- ❑ This has created confusion



FlexMove®

- ❑ Aluminum single piece frame conveyors
- ❑ Flexible designs sent as pre-assembled sub-sections
- ❑ Flexible chain conveyor
- ❑ Aluminum Single Piece frame
- ❑ Very tight corners
- ❑ Narrow widths
- ❑ Mainline conveyance
- ❑ Commonly know as “Flexlink style”





FlexMove[®]

SMARTFLEX[®]

Building Blocks

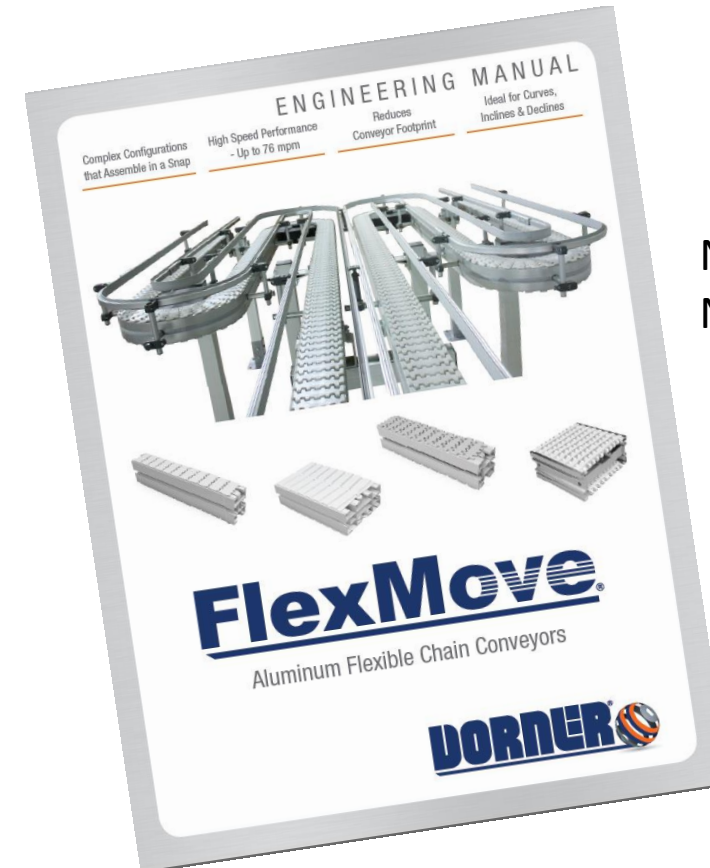
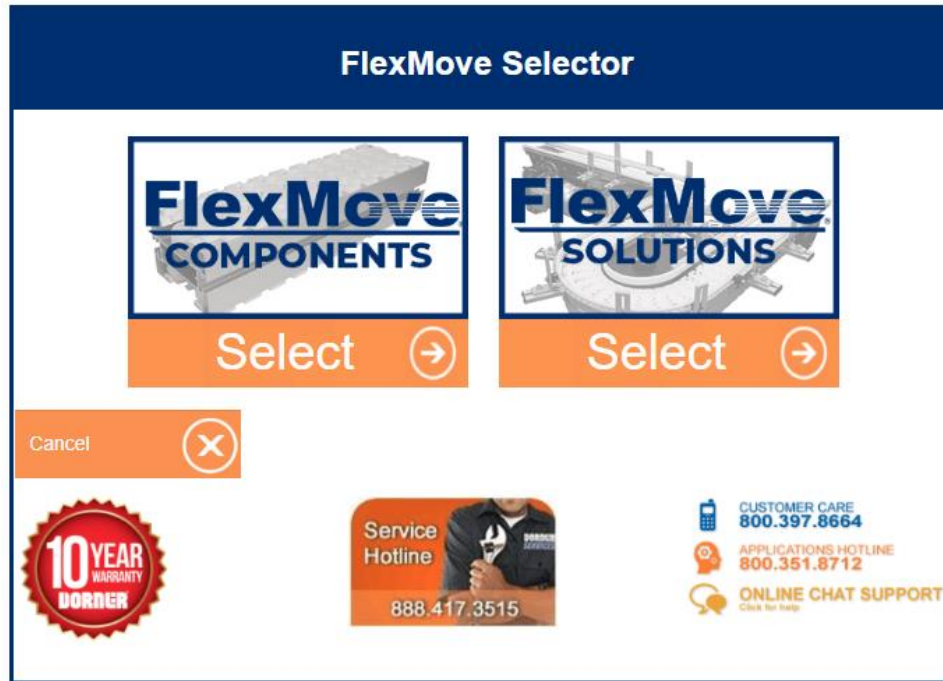
Why the Consolidation

- ❑ Eliminate confusion
- ❑ Create one single Brand - FlexMove
- ❑ Make all product offers available in all lines / order types
- ❑ Create one location and process for quoting
- ❑ Add some great new products!!

One Brand - FlexMove

- ❑ Components - FlexMove
- ❑ Assembled – FlexMove Solutions

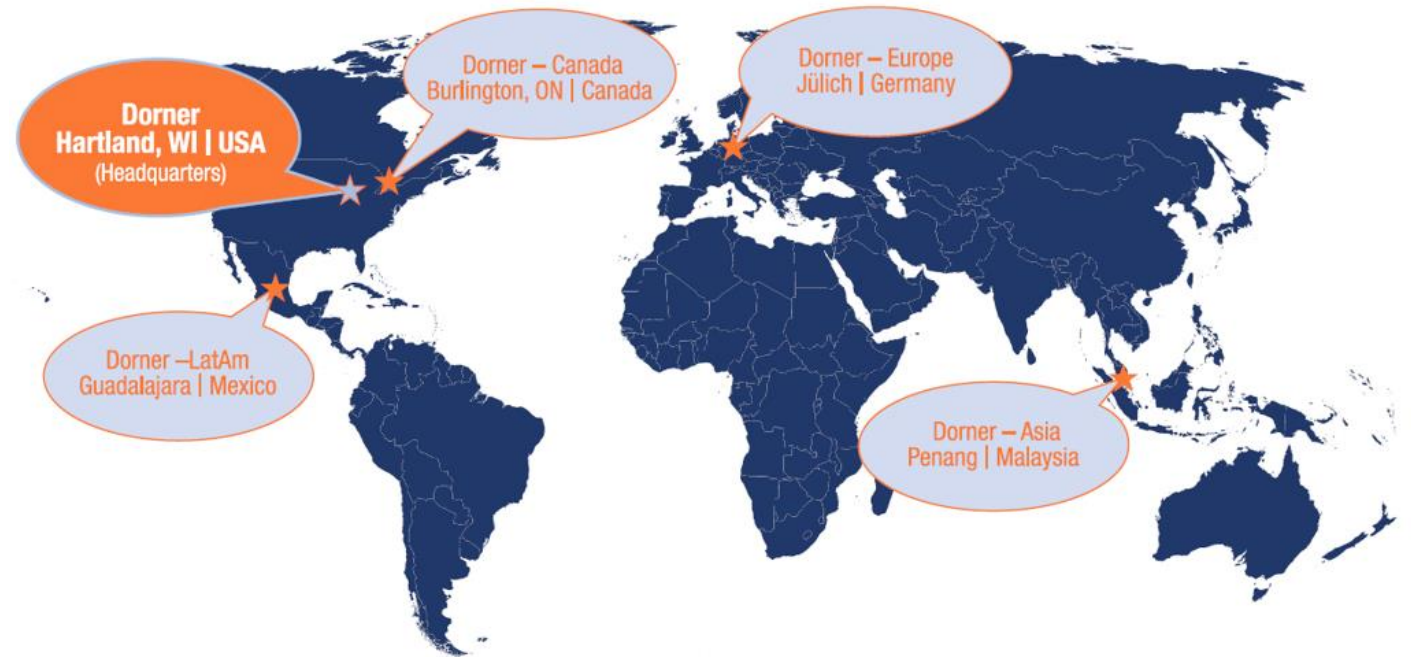
New
DTools
Start Page



New Catalog!!
New additions!!

One Brand - Worldwide

- ❑ (2) Master Stocking Locations – US, Malaysia
- ❑ (2) Regional Stocking Locations – Mexico, Germany
- ❑ Same product everywhere
- ❑ North America has some specific product
- ❑ US now stocking all sizes
 - ❑ 45, 65, 85, 105, 150, 180, 260
 - ❑ Not all product offering



Product Consolidation



❑ What was different in the SmartFlex line...

❑ ¾" shaft drive tails

❑ Power Transfers

❑ Weighted Take-up

❑ Guiding

❑ Top running drive

❑ Support Stands

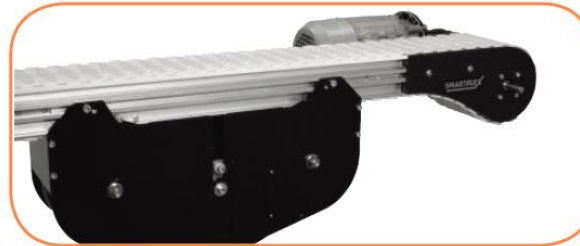
❑ Dorner Gearmotors

❑ All have been resolved



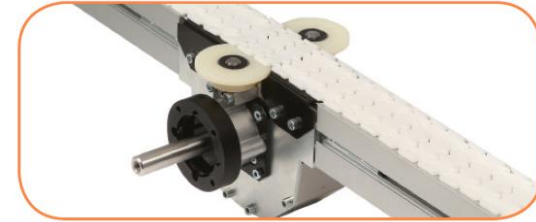
Industry Best Product Transfers

- Powered transfers allow for smooth end transfers for products as small as 3" in diameter. They are slave driven off of the conveyor and can be attached to the infeed and exit.



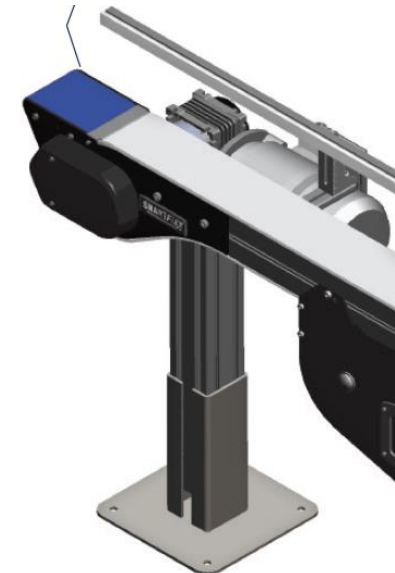
Weighted Take-up Module

- The unique, compact weighted take up is designed to free up discharge end and allow higher loads and longer conveyor lengths.



Top Running Loop Drive Design

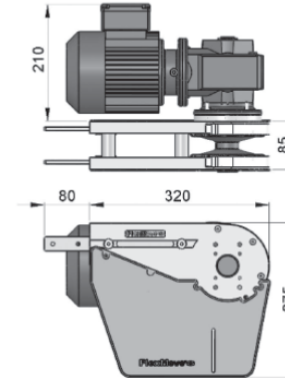
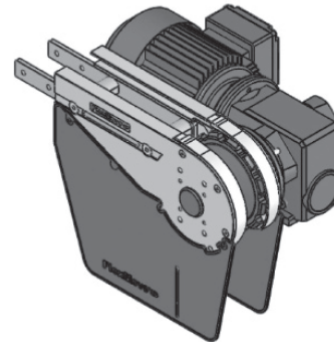
- The continuous loop features a patent pending top running drive design for added strength and flexibility.



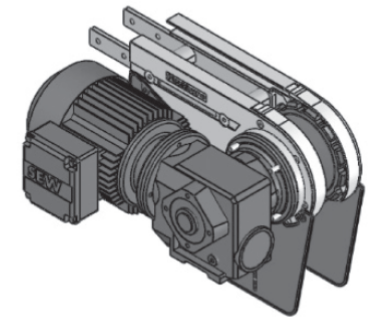
Direct Drive Tails

- ❑ All Direct Drive Tails are available in (2) shaft sizes
- ❑ All Direct Drive Tails have optional dual shafts
- ❑ All is now build to order in US
- ❑ 5 day lead time
- ❑ No outage of shafts or RH/LH
- ❑ 3/4" shaft – Dorner gearmotor
- ❑ 20mm shaft – SEW gearmotor

FM Direct End Drive without Motor (LEFT)
FMDD-A85-XDY (See Chart)



FM Direct End Drive without Motor (RIGHT)
FMDD-A85-XDY (See Chart)



| Part Number | | Shaft Selection | Direction | Aux Shaft Selection |
|-------------|---|--------------------|-----------|----------------------|
| FMDD-A85 | - | X | D | Y |
| | | 0 = 20 mm | L = Left | Blank = No Aux Shaft |
| | | E = 3/4 in* | | |
| | | A = 20 mm Aux Only | R = Right | A = 20 mm Aux Shaft |

*3/4 inch shaft option available in North America only.

Max Traction Force: 1250N
The Direct End Drive Unit is without torque limiter.

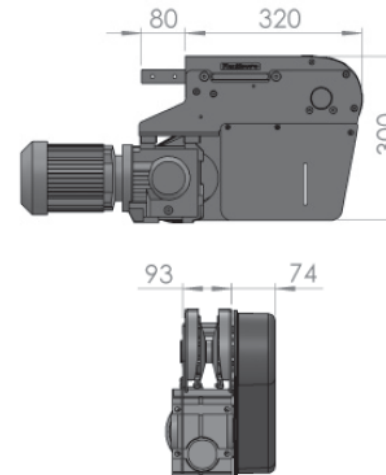
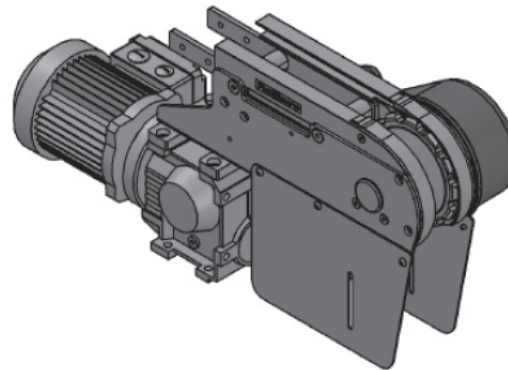
UOM: pc
Chain required 2-way: 0.8 meter
Slide rail required 2-way: 0.5 meter

Suspended Drive Tails

- ❑ All Suspended Drive Tails are available with and without torque limiter
- ❑ All is now build to order in US
- ❑ 5 day lead time
- ❑ No outage of RH/LH
- ❑ 20mm shaft only
- ❑ Limiter has 67% cap.

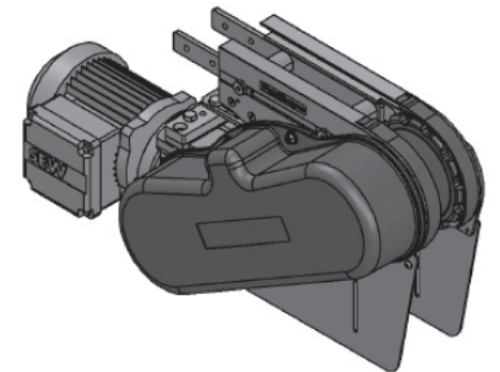
FM Suspended End Drive without Motor (LEFT)

FMSD-A85-0L (with Torque Limiter)
FMSD-A85SPT-0L (without Torque Limiter)



FM Suspended End Drive without Motor (RIGHT)

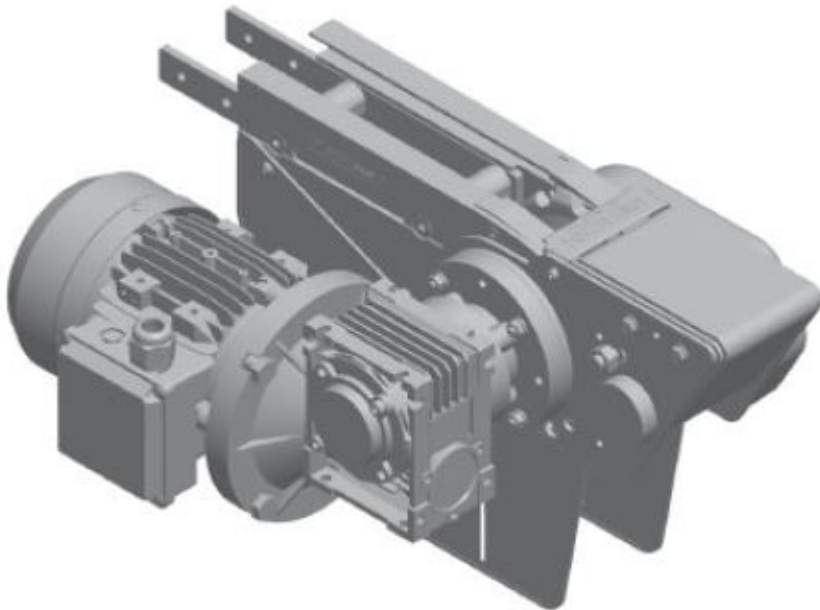
FMSD-A85-OR (with Torque Limiter)
FMSD-A85SPT-OR (without Torque Limiter)



Max Traction Force:
1250N (without limiter)
840N (with limiter)

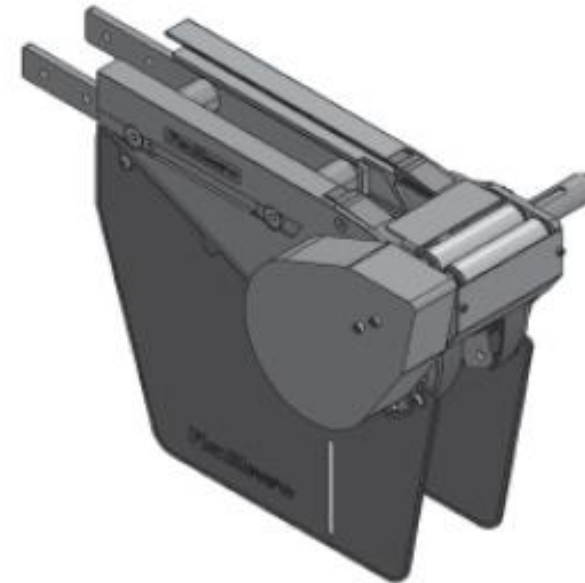
Product Transfers

- ❑ Both Power Transfer and Transfer Bridge are offered in all widths
- ❑ FlexMove and FlexMove Solutions
- ❑ Power Transfer is stock in US



Power Transfer

- Modular Belt
- Min part length = 100mm
- Good for interface with large roller
- 180 FPM max
- 20mm and $\frac{3}{4}$ " output shaft

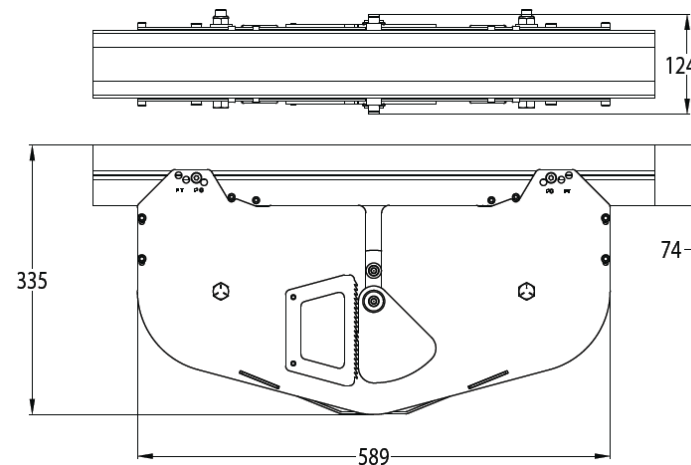


Transfer Bridge

- Driven rollers
- Min part length = 100mm
- Shorter
- Over 180 FPM
- 20mm output shaft only

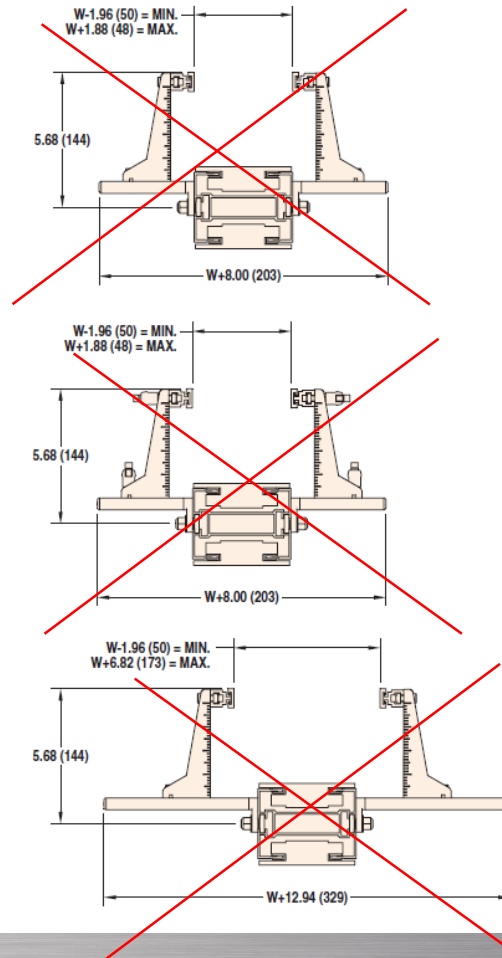
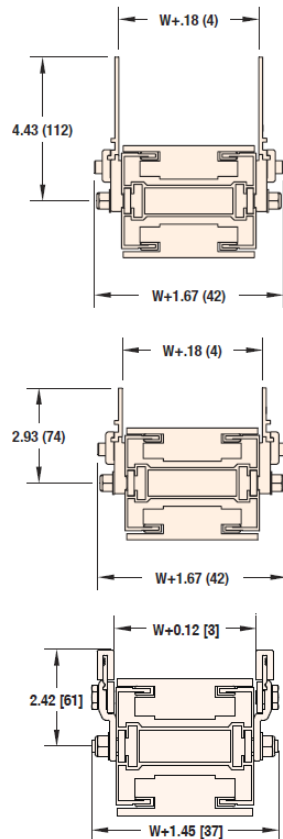
Weighted Take-up

- ❑ Weighted Take-up is offered in all widths (except 45mm)
- ❑ FlexMove and FlexMove Solutions
- ❑ Now standard with 700mm frame
- ❑ Use for conveyors over 12M (40 feet) long
- ❑ Used with GP drive tail
- ❑ Weighted Take-up is stock in US



New Guiding

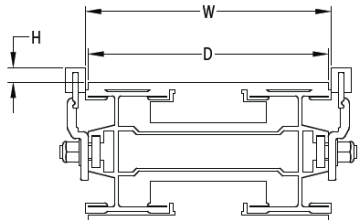
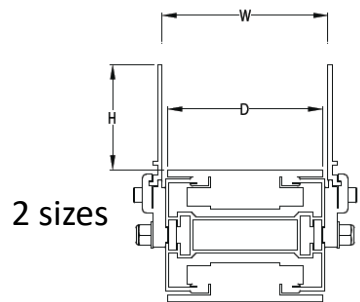
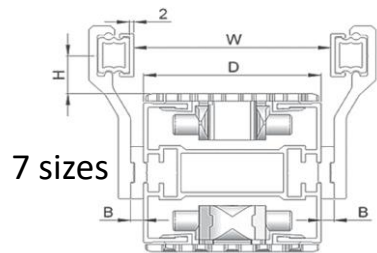
SmartFlex guiding



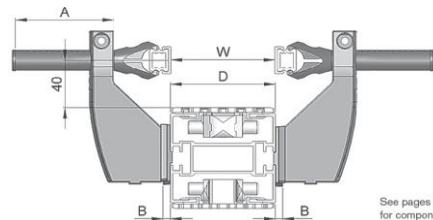
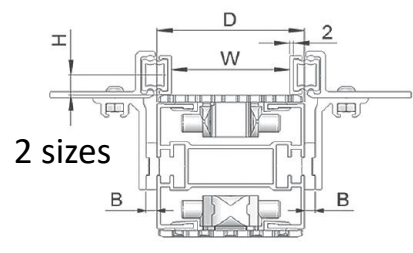
Eliminated adjustable guiding and replaced with FlexMove design

(20) New DTools Standard Guiding Packages

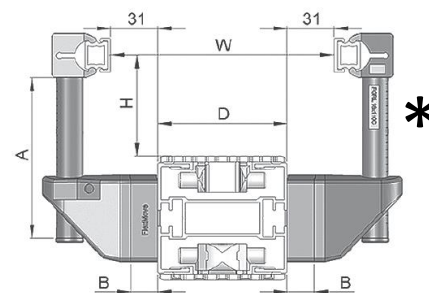
Fixed



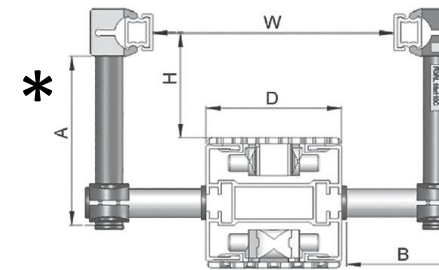
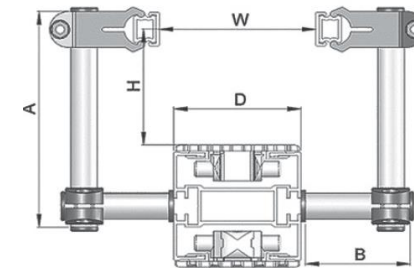
Adjustable Width



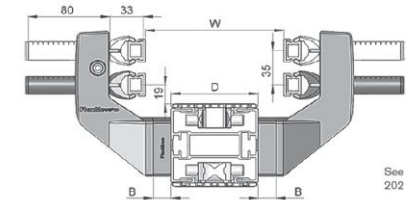
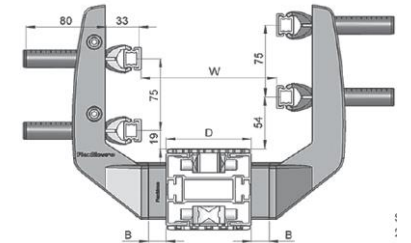
Adjustable Height



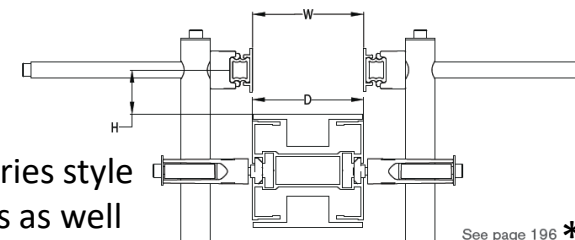
Fully Adjustable



Twin Rail



2200 Series style
Tool-less as well



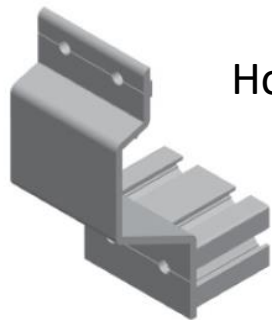
See page 196 *Light duty product only

Support Stands

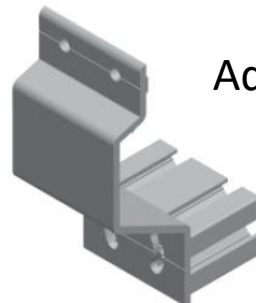
- ❑ SmartFlex stands – only available in steel foot and 80mm beam
- ❑ FlexMove stands now available in all foot styles and multiple beam sizes

| | 45mm | 65mm | 85mm | 105mm | 150mm | 180mm | 260mm |
|-----------|------|------|------|-------|-------|-------|-------|
| 64mm Beam | X | X | X | X | | | |
| 80mm Beam | | X | X | X | X | X | X |

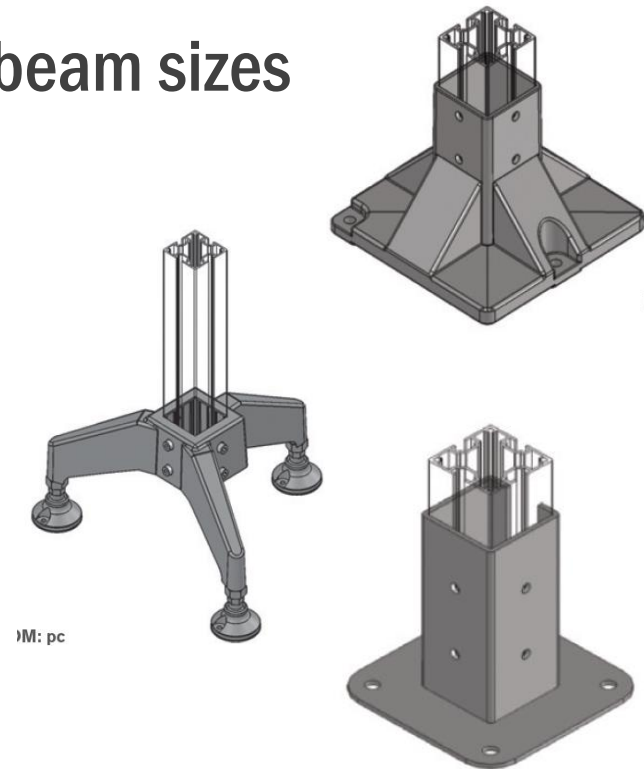
- ❑ New 180mm and 260mm standard Support Bracket Kits



Horizontal



Adjustable Angle

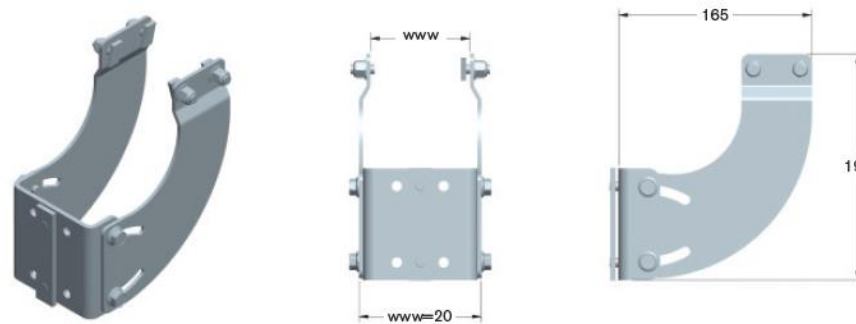


Support Stands – Direct Drive End

- ❑ SmartFlex had a direct drive end stand mount – but only for Dorner Gearmotors
- ❑ FlexMove / Solutions now offers new support structure for drive end independent of gearmotor type.

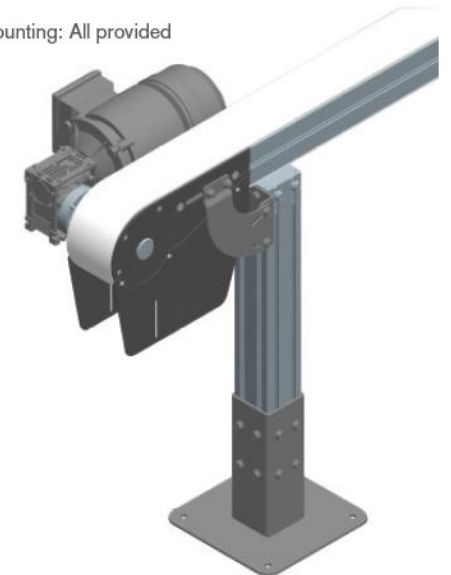
❑ Drive End Support Bracket

- ❑ Uses T-slot in new cast tails
- ❑ Not compatible with old style tails
- ❑ Puts supports in-line on center



UOM: pc
For support of direct drive end
to vertical beam support

Mounting: All provided



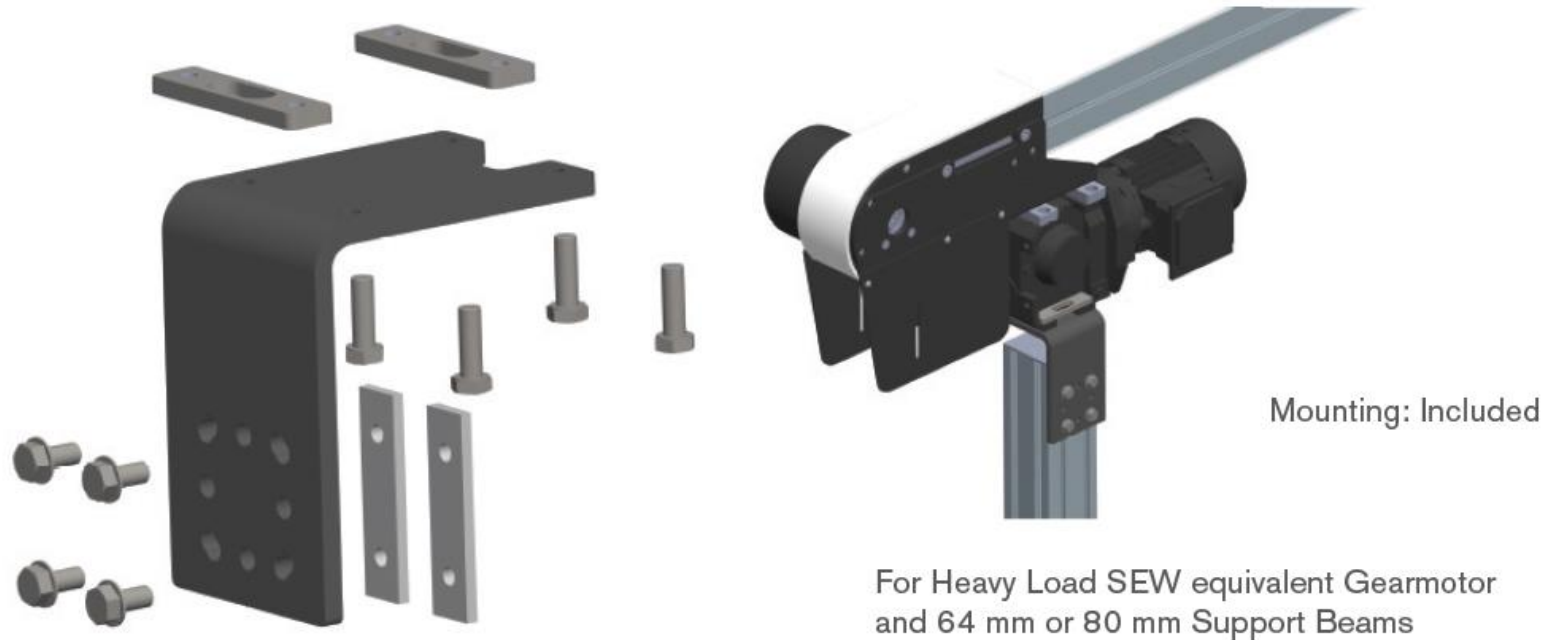
| Part Number | | Beam | Conveyor | Adjustable |
|-------------|---|--------------|------------|------------|
| FADBS | – | WW | X | V |
| | | 60 = 64 x 64 | K = 45 mm | |
| | | | S = 65 mm | |
| | | | M = 85 mm | |
| | | | C = 105 mm | |
| | | 80 = 80 x 80 | L = 150 mm | |
| | | | U = 180 mm | |
| | | | V = 260 mm | |

Support Stands – Suspended Drive

- ❑ New Product
- ❑ FlexMove / Solutions now offers new support structure for suspended drive.

- ❑ Drive End Support Bracket

- ❑ Mounts directly to gearmotor
 - ❑ Works on Suspended end and Intermediate drives



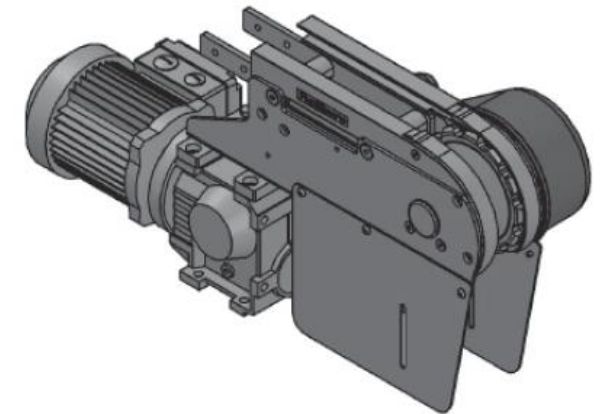
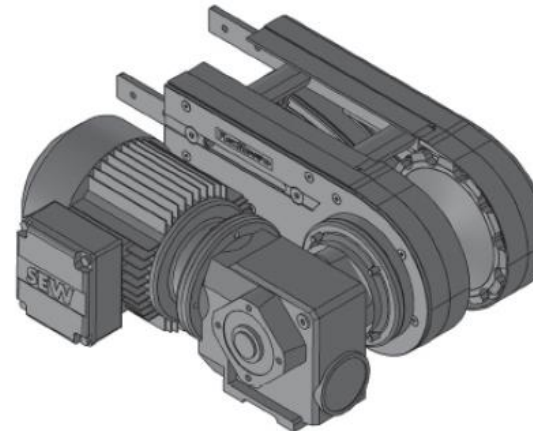
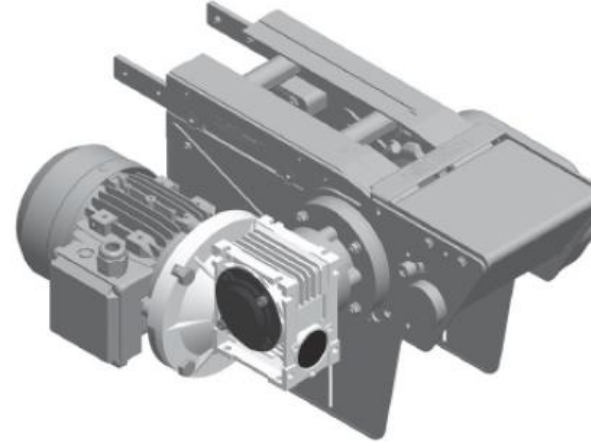
Gearmotors

❑ SmartFlex Gearmotors

- ❑ Standard Load, Heavy Load, SEW

❑ New Gearmotor Offering

- ❑ Standard Load – ¾” shaft
 - ❑ Available North America Only
 - ❑ Same as Dorner Standard 3200 Series Gearmotor
- ❑ Heavy Load SEW Equivalent – 20mm shaft
 - ❑ Nord Gearmotor
 - ❑ Drop-in for SEW
 - ❑ Direct and Suspended Mount Versions
- ❑ All Now listed in FlexMove catalog



One Brand – (3) Ways to Buy



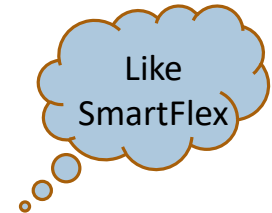
DTools build by complete conveyor or assemblies

Component Sale

- Customer assembles product
- Provide parts list
- Provide 2D and 3D CAD

Assembled Sale

- Dorner will assemble any Flexmove configuration
- Build components in DTools
- Send to Dorner for assembly quote



Standard Part Number, fully assembled conveyor

Standard Assembled Sale

- Fixed offering
- Standard DTools pricing and lead time

Like Always – We will do ETO

FlexMove Solutions – Expanded Offering



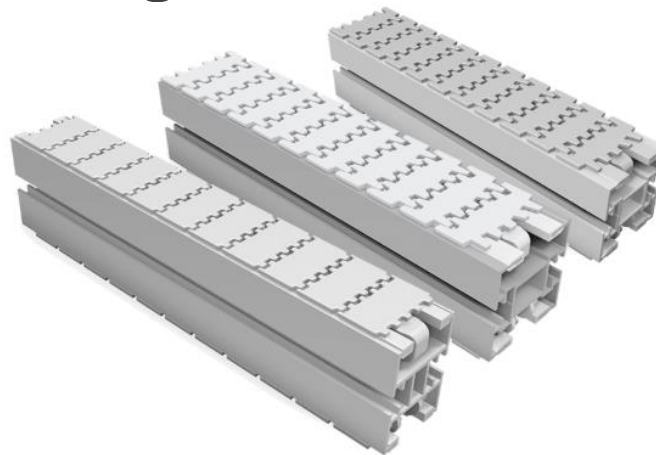
- ❑ 65, 85, 105, 150mm wide
- ❑ Direct drive only
- ❑ Weighted Take-up option
- ❑ Power Transfer, roller transfer
- ❑ Wheel and plain bends
- ❑ Vertical bends
- ❑ Plain, friction and conductive chain
- ❑ 80mm support posts, steel feet
- ❑ 7 guide styles
- ❑ Standard Load, Heavy Load, SEW Gearmotors



- ❑ 45, 65, 85, 105, 150, 180, 260mm wide
- ❑ Direct and Suspended end drive only
- ❑ Weighted take-up option
- ❑ Power Transfer, roller transfer
- ❑ Wheel and plain bends
- ❑ Vertical bends
- ❑ Plain, friction and conductive chain
- ❑ 64 and 80mm support posts, steel feet
- ❑ 63 guide styles
- ❑ Standard Load, SEW Equivalent Gearmotors

FlexMove Components

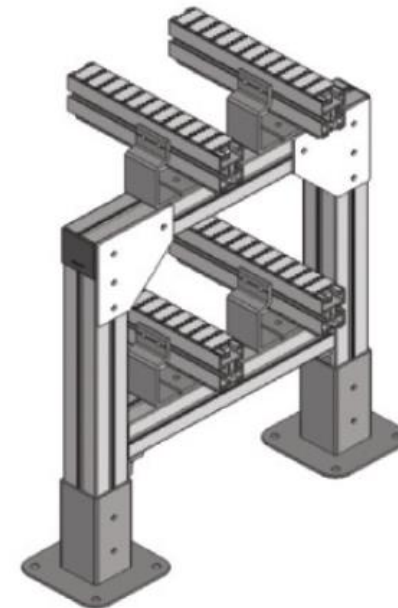
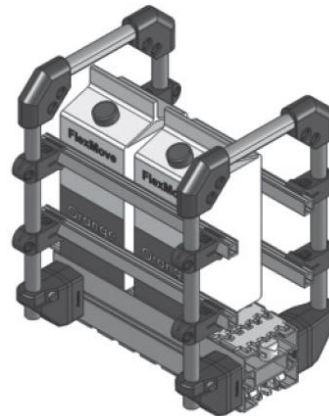
- ❑ If it is not in Solutions – it is most likely in components
- ❑ You are building the entire conveyor in DTools – “piece by piece”
- ❑ Selecting such items as wearstrip, guide rail, slide rails fasteners and stand feet
- ❑ If you are unsure – go with the default DTools item
- ❑ This method is done as experienced Integrators often have their preferred style of specifying the product
- ❑ If unsure – Consult Dorner



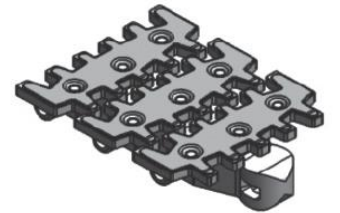
FlexMove Product – Unlimited Possibilities

- ❑ FlexMove is substantially more than what is in DTools Conveyor Build
- ❑ Review the Engineering Manual to understand the possibilities
- ❑ All parts are available to be priced in Quote by Part Number
- ❑ Different drive types
- ❑ Chain types
- ❑ Alternative slide rails
- ❑ Guiding
- ❑ Support structure
- ❑ Mechanical Traffic Modules

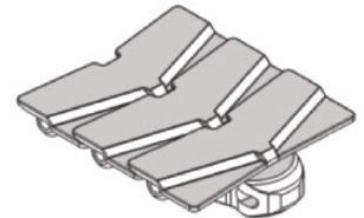
FM Direct Wheel Drive without Motor
FMWD-DD-0M



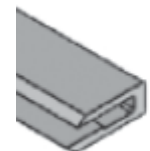
Stainless Steel Top Chain FMST-5S



Safety Chain FCPC-5V



FASR-25T



New DTools

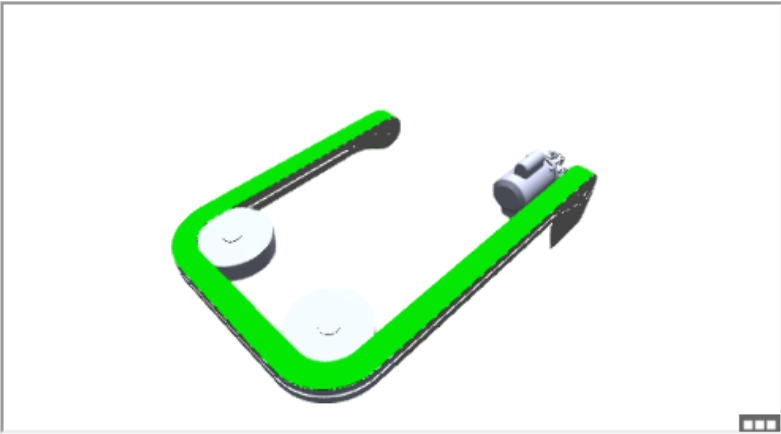
- ❑ Product has new DTools program
- ❑ Same interface – Solutions vs Components
- ❑ Asks some new loading questions
- ❑ Provides 3D Preview of conveyor
- ❑ Full 2D and 3D Cad
- ❑ Includes Copy Edit capability of a completed quote!!!

Tools Home New Quote Add Products Quote By Part Number Quote In Process Quotes

DPricer Tool Hello, mike.hosch@dorner.com Edit Profile Log off

FlexMove Solutions Complete Conveyor

| Questions | More Information | Previous Answers |
|--|--|--|
| Configuration Is Completed | Configuration Successful, choose how | Select 21.97 in For The Infeed Top of Chain Height |
| Add This Configuration To Quote in Process | Configuration Successful, choose how many products you need with the same configuration. | Select Section: 1, Type: Standard Infeed Tail |
| Discard This Configuration | Number of Conveyor Package required 1 | Select Section: 2, Type: Intermediate Length: 44in |
| | | Select Section: 3, Type: Wheel Bend Direction: LeftHand, Angle: 90 |
| | | Select Section: 4, Type: Intermediate Length: 33in |
| | | Select Section: 5, Type: Wheel Bend Direction: LeftHand, Angle: 90 |
| | | Select Section: 6, Type: Intermediate Length: 55in |
| | | Select Section: 7, Type: End Drive |
| | | Select Direct Drive |
| | | Select A |



Cancel

Launch & Timing

- ☐ Formal Product DTools Launch
- ☐ Go Live – week of July 15th
- ☐ New Catalogs – at print
- ☐ Website change over
- ☐ Orders for old version SmartFlex will be honored for 3 months
- ☐ All New products shown in presentation are in stock and available today!!

Questions...

*Thank you for taking the time today to learn more about
Dorner FlexMove product*