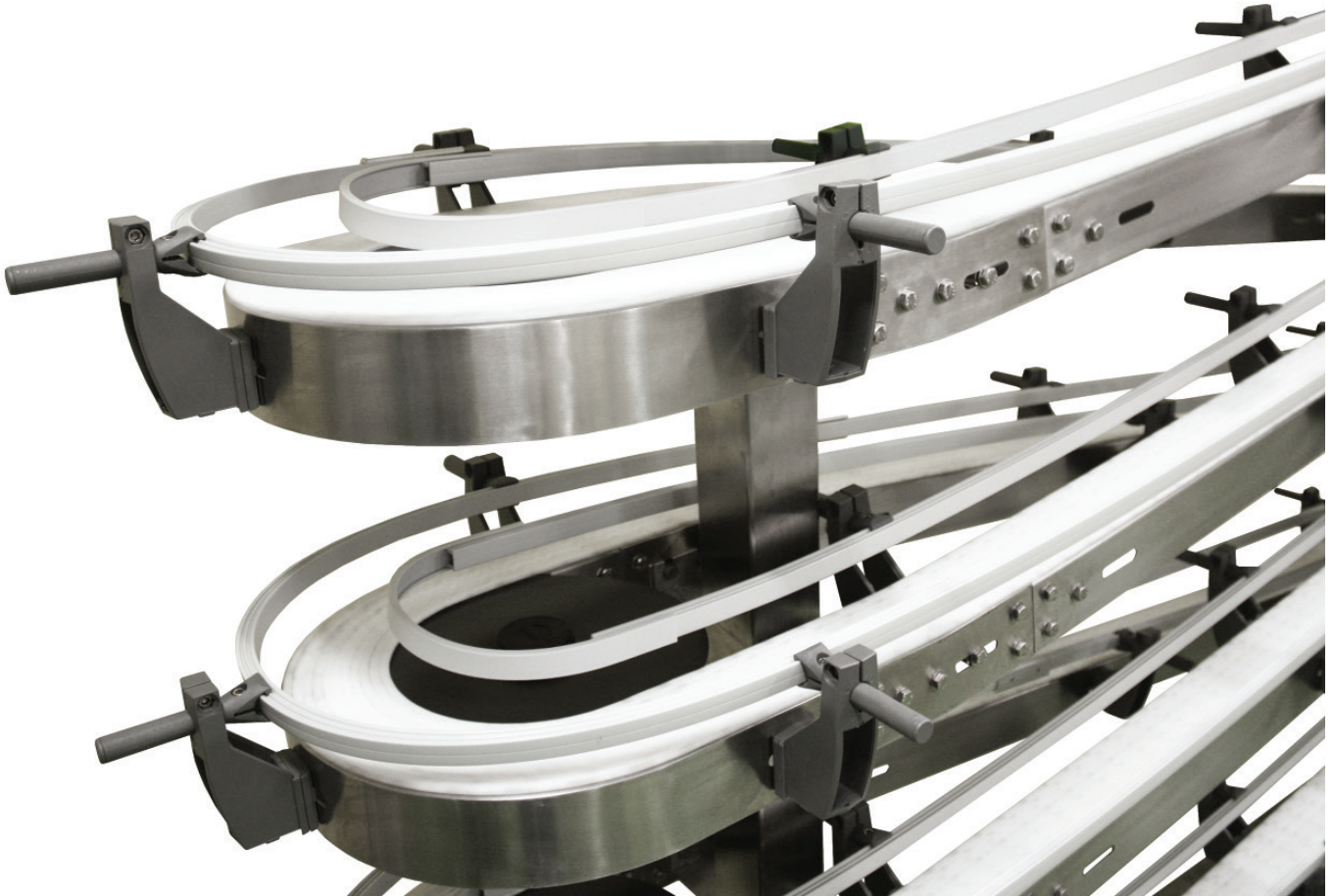


Complex Configurations  
& Tight Spaces

Ideal for Corrosion  
Resistant Applications

Reduces  
Conveyor Footprint

Capable of Curves,  
Inclines & Declines



# **FlexMove** ® **STAINLESS SERIES**

High Performance, Stainless Steel,  
Flexible Chain Conveyors



## FlexMove<sup>®</sup> Stainless Steel Conveyors are best for:

- Part Handling
- Tight Spaces
- Buffering
- Elevation Changes
- Accumulation
- Long Lengths
- Complex Configurations
- Caustic & Corrosive Environments
- Curves, Jogs, Inclines, Declines

## Sizes & Measurements

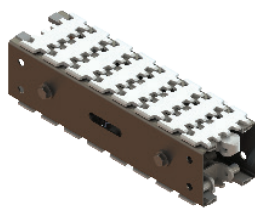
- Widths: 65 mm, 85 mm, 105 mm, 180 mm and 260 mm
- Lengths: up to 30 m (98 ft)

## Loads & Speeds

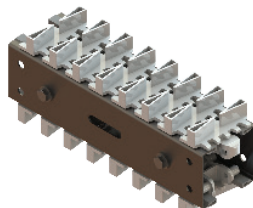
- Loads up to 65 kg/m (44 lbs/ft)
- Speeds: up to 58 mpm (190 fpm)

## Plastic Chain Types

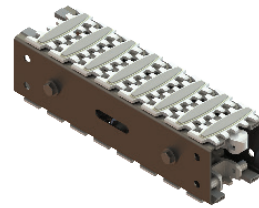
- Standard: Low Friction & Friction Top Inserts
- Specialty
  - Conductive
  - Cleated
  - Hardened Steel Top
  - Roller Top
  - Magnet Top
  - And Many More



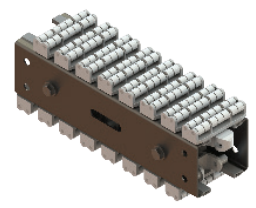
Flat



Cleated

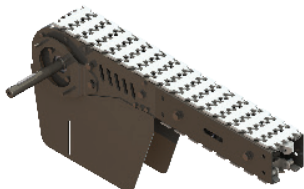


Friction Top

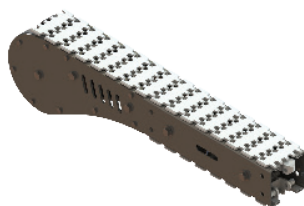


Roller Top

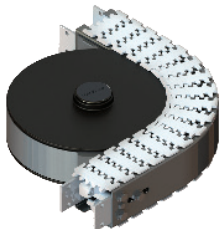
## Modules



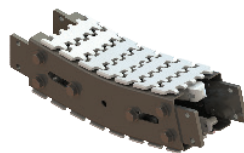
Drive Tail



Idler Tail



Curves from 15° to 180°



Inclines/Declines from 5° to 90°

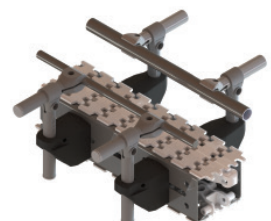
## Support Stands

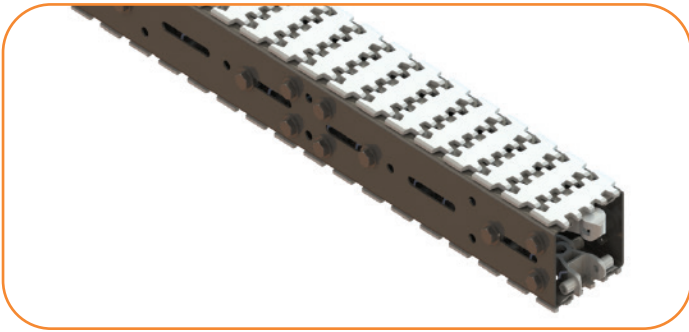
- Tripod Supports
- Horizontal & Adjustable Angle Supports also available



## Guiding

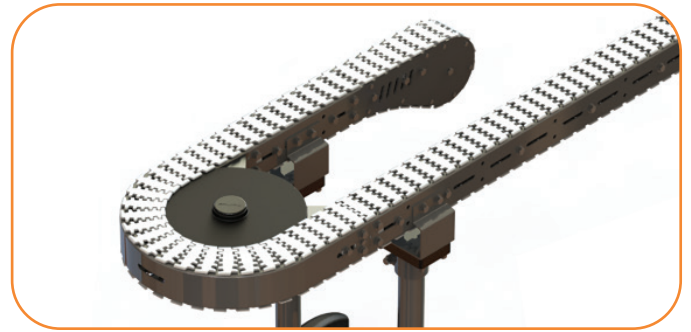
- Fully Adjustable
- Adjustable Width/Height
- Twin Rail
- Overhead Guide





## Complete Stainless Steel Construction

- Stainless Steel Construction is ideal for corrosion resistant applications or packaging lines



## Wheel Corners

- Standard wheel corners eliminate friction allowing for complicated multi-curved configurations



## Wedge Elevator

- Wedge Elevators save footprint space by vertically lifting or lowering a product using a specialty gripper chain



## Alpines

- Alpine configurations available for product buffering, elevation changes or coding/curing applications

## The Benefits of a Dorner FlexMove Stainless Steel Series Conveyor

### Reduces Costs

- Available pre-assembled to your exact specifications; saving labor costs
- FlexMove Solutions eliminates unnecessary cutting, inventory and waste

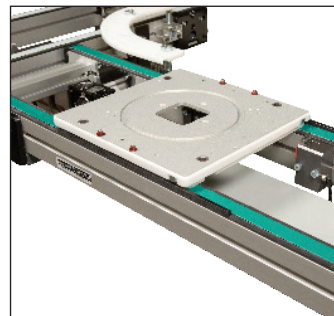
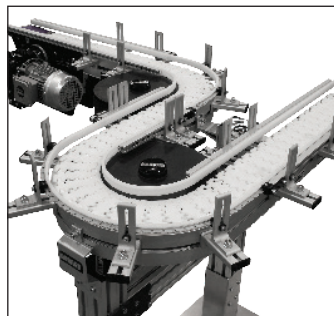
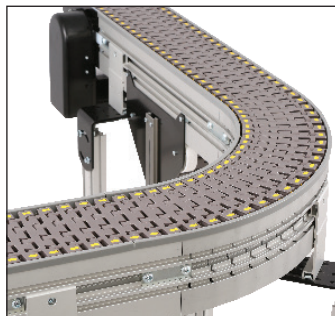
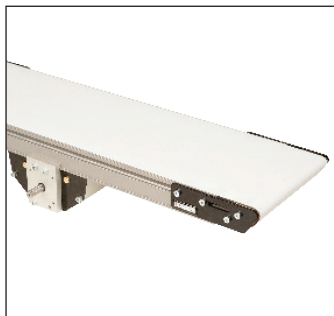
### Delivers Fast

- Dorner sets the industry standard for delivery
- FlexMove is shattering the norm with conveyors available to ship in as little as 15 working days

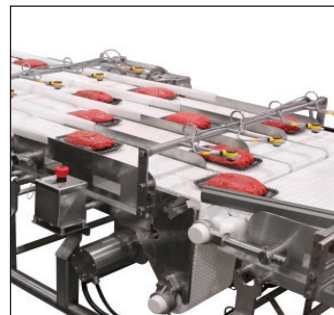
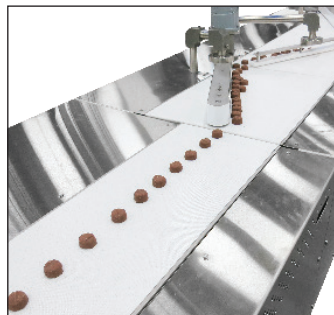
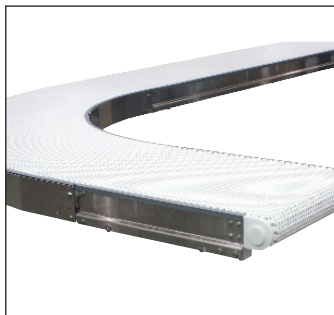
### Flexible

- Provides capability for vertical incline with minimal floor space
- Features modular framing for future add-on capability and production line changes

## Industrial & Automation Conveyors



## Sanitary Conveyors



## Engineered Solutions



Parts



Service



Online Configurator



Warranty

## Transforming Conveyor Automation

### Dorner – North & South America

#### Dorner – U.S.A. Headquarters

975 Cottonwood Ave  
Hartland, WI 53029, USA  
(800) 397-8664  
(262) 367-7600  
info@dorner.com

#### Dorner – Canada

100-5515 North Service Road  
Burlington, Ontario L7L 6G6  
Canada  
(289) 208-7306  
info@dorner.com

#### Dorner – Latin America

Carretera a Nogales #5297,  
Nave 11. Parque Industrial Nogales  
Zapopan, Jalisco C.P. 45222  
Mexico  
+52.33.30037400  
info.latinamerica@dorner.com



### Dorner – Europe

#### Dorner – Germany

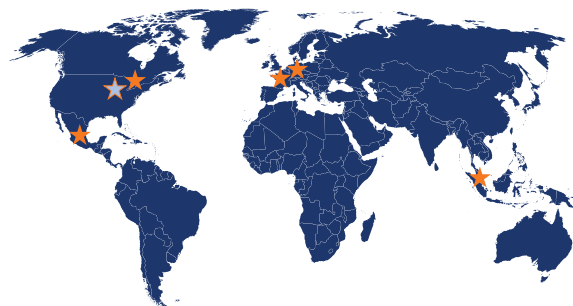
Karl-Heinz-Beckurts-Straße 7  
52428 Jülich,  
Germany  
+49 (0) 2461/93767-0  
info.europe@dorner.com

#### Dorner – France

8 rue des Frères Caudron  
78140 Velizy-Villacoublay  
France  
+33 (0)1 84 73 24 27  
info.france@dorner.com

### Dorner – Asia

128 Jalan Permatang Damar Laut, Bayan Lepas 11960  
Penang, Malaysia  
+604-626-2948 | info.asia@dorner.com



[www.dornerconveyors.com](http://www.dornerconveyors.com)