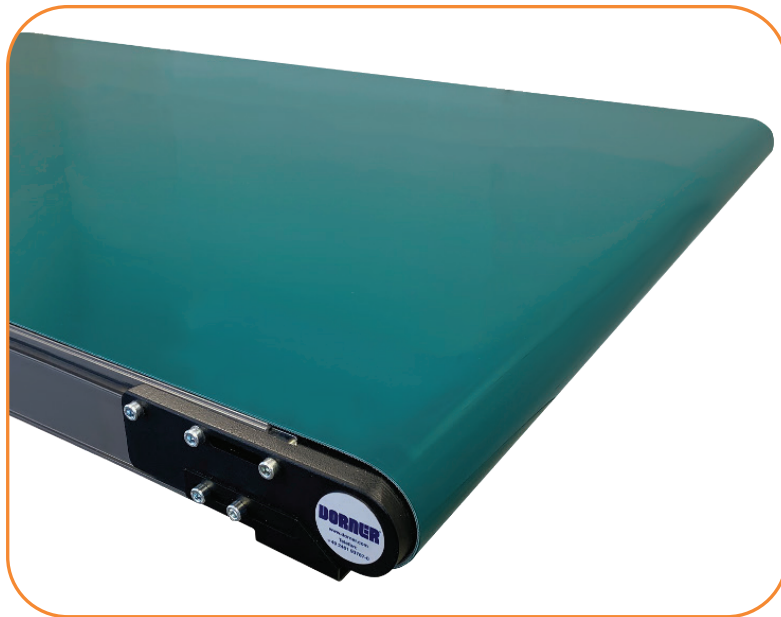




2200 XL SERIES CONVEYORS



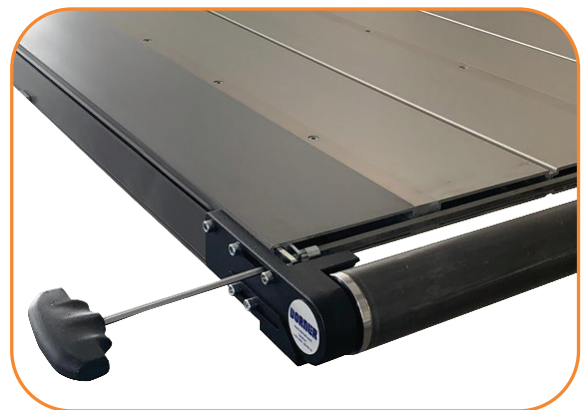
- Compact, wide-width, belted conveyors fit into tight spaces and easily integrate with machinery and equipment
- Featuring the 2200 Series design with sizes up to 914 mm wide and 3500 mm long
- Sleek, 70 mm aluminum conveyor frame with universal T-Slot allows for fast and simple attachment of accessories and guiding with a variety of industry available hardware
- Precise V-guided belting for positive belt tracking along the entire length of the conveyor
- Patented rack and pinion belt tensioning system for quick and accurate belt maintenance

Features & Specifications

- Widths: 660, 711, 762, 813, 864 and 914 mm
- Lengths: 650 mm to 3500 mm
- Loads: Up to 50 kg depending on belt speed
- Speeds: Up to 37 m/min
- Frame height: 70 mm
- Drive and idler roller size: 60 mm diameter
- Belting Options: All 2200 Series standard and specialty belting options available
- Standard and heavy load gearmotor options available

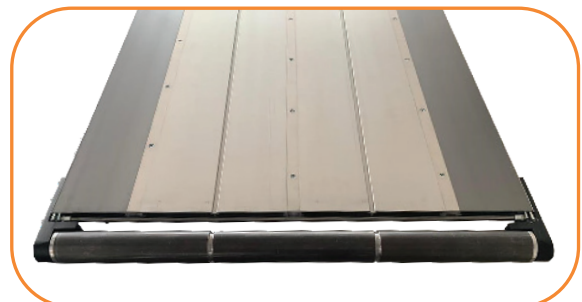
Options & Accessories

- Fixed and adjustable height and single post support stands available
- Top of belt heights ranging from 310 mm to 2250 mm with fixed foot and caster type stands available
- Product guiding options include: Low Side, Aluminum Side, Adjustable Guiding and Tool-less Adjustable
- Reference the 2200 Series Engineering Manual or www.dornerconveyors.com for additional details and specifications



Rack and Pinion

Allows the tail section to be easily slid back for quick belt adjustments and removal

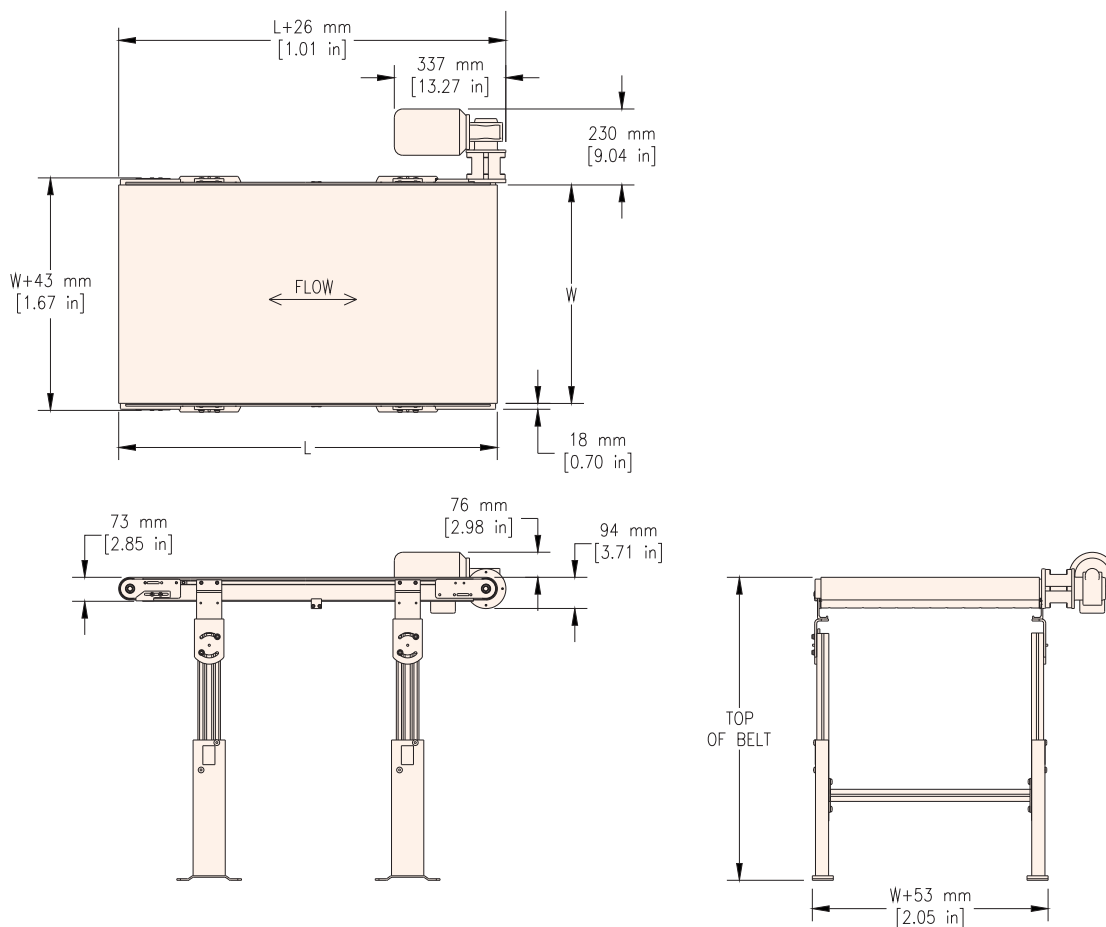


Durable Wide-Width Frames

Interlocking multi-section frame extrusions create robust and accurate frames

Dimensions

- Side Mount Package Standard
 - Contact factory for bottom and top mount options
- Reference the 2200 Series Engineering Manual or www.dornerconveyors.com for belt speed options and compatible gearmotors



Transforming Conveyor Automation

Dorner GmbH – Europe

Dorner – Germany

Karl-Heinz-Beckurts-Straße 7
52428 Jülich,
Germany
+49 (0) 2461/93767-0
info.europe@dorner.com

Dorner – France

8 rue des Frères Caudron
78140 Velizy-Villacoublay
France
+33 (0)1 84 73 24 27
info.france@dorner.com



Dorner – North & South America

Dorner – U.S.A. Headquarters

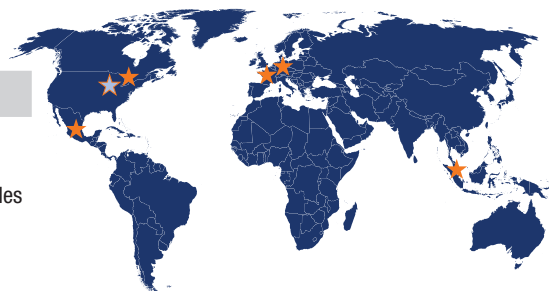
975 Cottonwood Ave
Hartland, WI 53029, USA
(800) 397-8664
(262) 367-7600
info@dorner.com

Dorner – Canada

100-5515 North Service Road
Burlington, Ontario L7L 6G6
Canada
(289) 208-7306
info@dorner.com

Dorner – Latin America

Carretera a Nogales #5297,
Nave 11. Parque Industrial Nogales
Zapopan, Jalisco C.P. 45222
Mexico
+52.33.30037400
info.latinamerica@dorner.com



Dorner – Asia

128 Jalan Permatang Damar Laut, Bayan Lepas 11960
Penang, Malaysia
+604-626-2948 | info.asia@dorner.com

www.dornerconveyors.com