



AquaPruf[®] Support Stands

Installation, Maintenance & Parts Manual



For other service manuals visit our website at:
www.dornerconveyors.com/manuals-literature

Record Conveyor Serial Number Here

Warnings - General Safety

⚠ WARNING

The safety alert symbol, black triangle with white exclamation, is used to alert you to potential personal injury hazards.

⚠ DANGER



Climbing, sitting, walking or riding on conveyor will cause severe injury.
KEEP OFF CONVEYORS.

⚠ DANGER



DO NOT OPERATE CONVEYORS IN AN EXPLOSIVE ENVIRONMENT.

⚠ DANGER



Supports marked with this symbol must be anchored to the floor. Supports not anchored to floor will tip, causing severe injury or death.
SUPPORT MUST BE ANCHORED TO FLOOR.

⚠ WARNING



LOCK OUT POWER before removing guards or performing maintenance. Exposed moving parts can cause serious injury.

⚠ WARNING



Loosening stand height or angle adjustment screws may cause conveyor sections to drop down, causing severe injury.
SUPPORT CONVEYOR SECTIONS PRIOR TO LOOSENING STAND HEIGHT OR ANGLE ADJUSTMENT SCREWS.

⚠ WARNING



Dorner cannot control the physical installation and application of conveyors. Taking protective measures is the responsibility of the user.
When conveyors are used in conjunction with other equipment or as part of a multiple conveyor system, **CHECK FOR POTENTIAL PINCH POINTS** and other mechanical hazards before system start-up.

Product Description

Refer to **Figure 1** for typical stand components.

1	Screws
2	Support Stand
3	Foot Pad

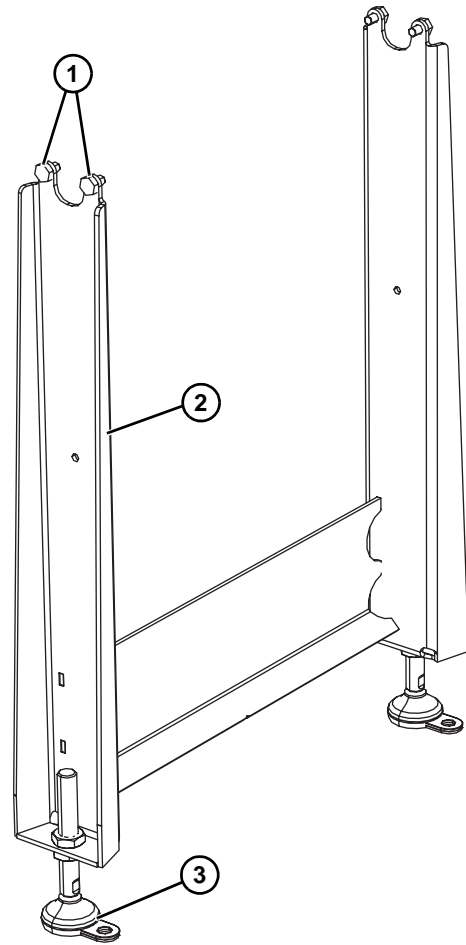
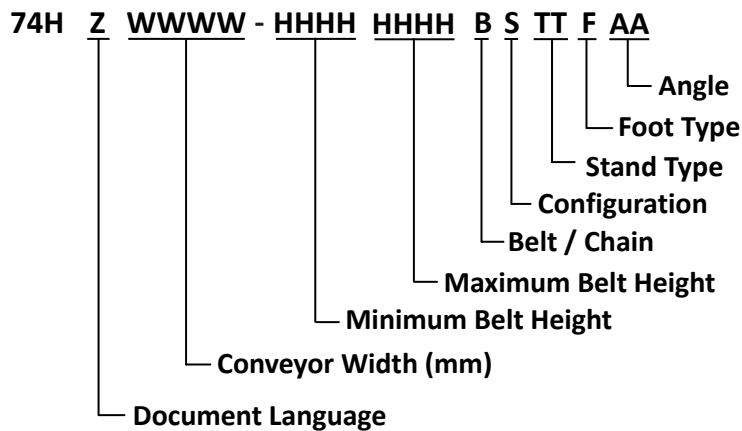


Figure 1

Specifications

Support Stands



Specifications

Torque Specifications

	Flat Head		Socket Head		Button/Low Head		Set Screw	
	Size	Torque	Size	Torque	Size	Torque	Size	Torque
M4 x 0.7	2.5 mm	3.4 Nm (30 in lbs)	3 mm	5.9 Nm (52 in lbs)	2.5 mm	2.9 Nm (26 in lbs)	2 mm	2.1 Nm (19 in lbs)
M5 x 0.8	3 mm	6.9 Nm (61 in lbs)	4 mm	12.0 Nm (106 in lbs)	3 mm	5.9 Nm (52 in lbs)	2.5 mm	4.7 Nm (42 in lbs)
M6 x 1.0	4 mm	12.0 Nm (106 in lbs)	5 mm	20.3 Nm (180 in lbs)	4 mm	10.0 Nm (89 in lbs)	3 mm	7.7 Nm (68 in lbs)
M8 x 1.25	5 mm	28.0 Nm (248 in lbs)	6 mm	48.8 Nm (432 in lbs)	5 mm	24.0 Nm (212 in lbs)	4 mm	17.8 Nm (158 in lbs)
M10 x 1.5	6 mm	56.0 Nm (496 in lbs)	8 mm	97.5 Nm (863 in lbs)	6 mm	48.0 Nm (425 in lbs)	5 mm	35.0 Nm (310 in lbs)

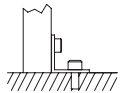
Required Tools

- Level
- 13 mm wrench
- 17 mm wrench
- 24 mm wrench
- 30 mm wrench or large adjustable wrench

Recommended Installation Sequence

- Attach the stand(s) to the conveyor.
- Attach the diagonal bracing, if applicable.
- Adjust the stand height and level. Refer to “Stand Height Adjustment” on page 8.

Attach Stands to Conveyor

⚠ DANGER

Supports marked with this symbol must be anchored to the floor. Supports not anchored to floor will tip, causing severe injury or death.
SUPPORT MUST BE ANCHORED TO FLOOR.

Support Stands

1. Properly support the conveyor or place the conveyor upside down on a flat surface.

⚠ WARNING

Failure to secure nuts may cause conveyor sections to drop down causing severe injury. TIGHTEN NUTS AFTER ADJUSTMENT.

2. Attach the stand to the conveyor.

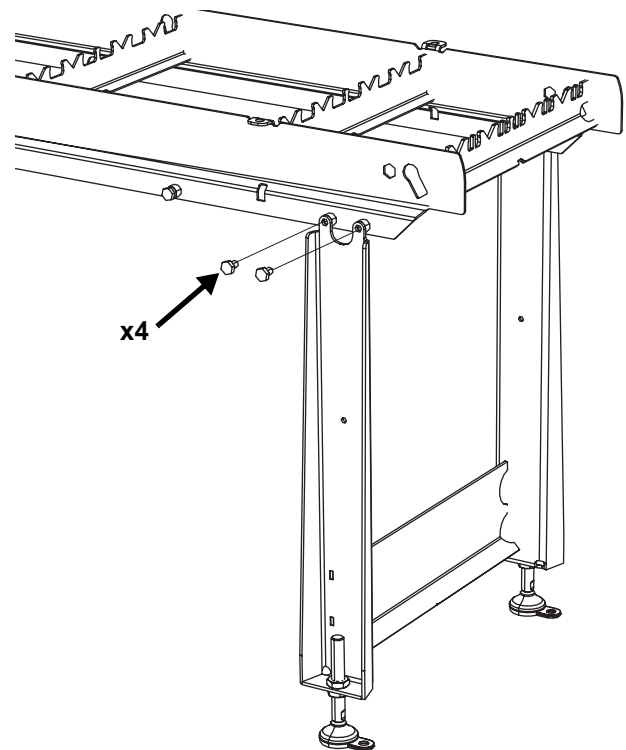


Figure 2

3. Tighten the bolts.

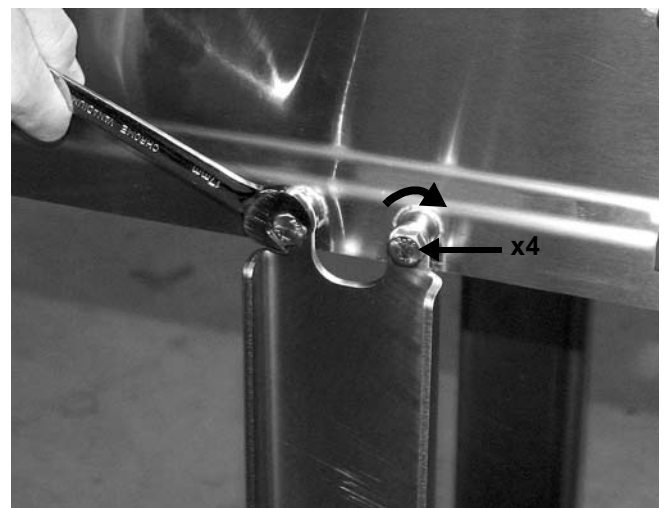



Figure 3

4. Repeat for the other stands.

Installation

Low Height Support Stands

1. Properly support the conveyor or place the conveyor upside down on a flat surface.

⚠ WARNING

Failure to secure nuts may cause conveyor sections to drop down causing severe injury. TIGHTEN NUTS AFTER ADJUSTMENT.

2. Attach the stand to the conveyor.



Figure 4

3. Adjust height, as needed, and tighten top nut to secure position.

4. Install and tighten cap (if equipped).

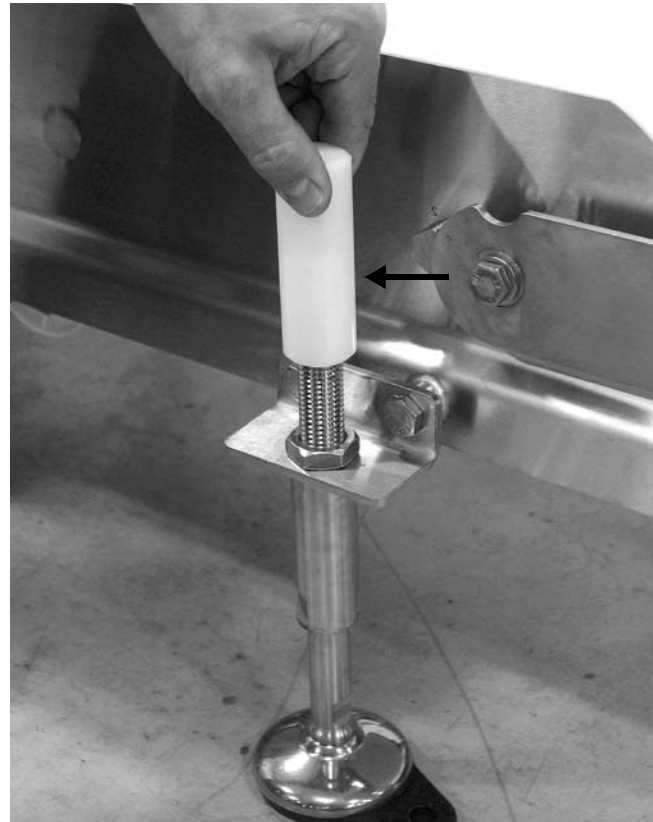


Figure 5




Figure 6

5. Repeat for the other stands.

Ceiling Supports

1. Properly support the conveyor or place the conveyor upside down on a flat surface.

⚠ WARNING

Failure to secure nuts may cause conveyor sections to drop down causing severe injury. TIGHTEN NUTS AFTER ADJUSTMENT.

2. Attach the ceiling support to the conveyor.

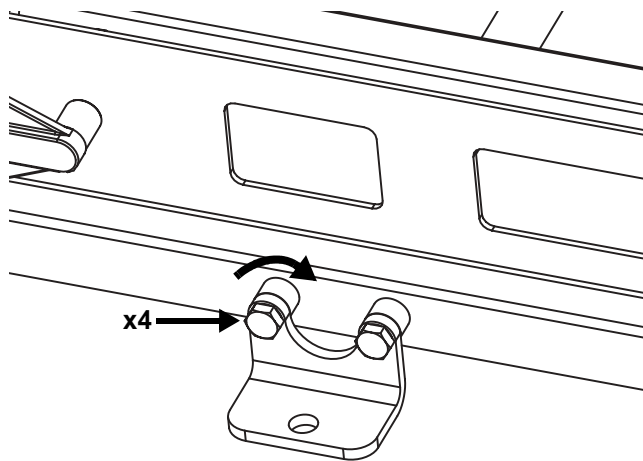


Figure 7

3. Tighten the nuts.
4. Repeat for the other ceiling supports.

Diagonal Brace Attachment

NOTE

Tall stands come equipped with a threaded bushing for attaching the brace to the stand.

1. Attach the brace to the stand.



Figure 8

2. Attach the brace to the conveyor.



Figure 9

3. Repeat for the opposite leg.
4. Tighten all hardware.

Preventive Maintenance and Adjustment

Required Tools


- Level
- 13 mm wrench
- 17 mm wrench
- 24 mm wrench
- 30 mm wrench or large adjustable wrench

Stand Height Adjustment

Stands

⚠ WARNING

<p style="text-align: center;">SEVERE HAZARD!</p> <p>DO NOT EXCEED THE MAXIMUM HEIGHT OF 6" (152 mm) from the floor to the bottom of the stand.</p> <p>Exceeding the maximum height will allow parts to separate and may cause serious injury.</p>

⚠ WARNING

<p>Loosening stand height or angle adjustment nuts may cause conveyor sections to drop down, causing severe injury.</p> <p>SUPPORT CONVEYOR SECTIONS PRIOR TO LOOSENING STAND HEIGHT OR ANGLE ADJUSTMENT NUTS.</p>

1. Support conveyor.
2. Remove cap (if equipped).

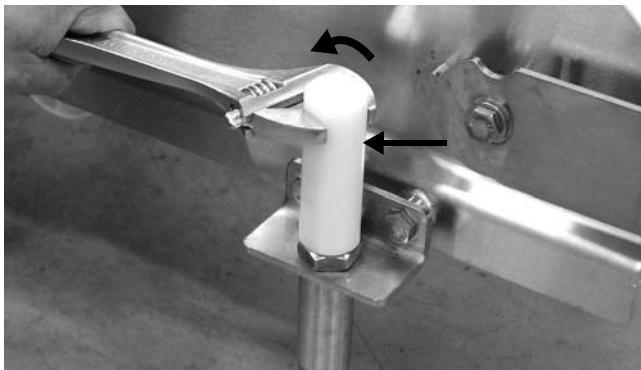


Figure 10

3. Loosen the upper nut on the foot stem.



Figure 11

4. Rotate the foot stem to raise or lower the stand.

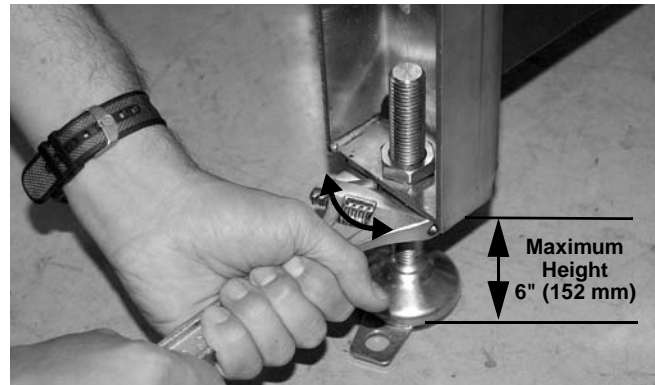


Figure 12

5. Repeat steps on the opposite stand leg.
6. Level the stand.

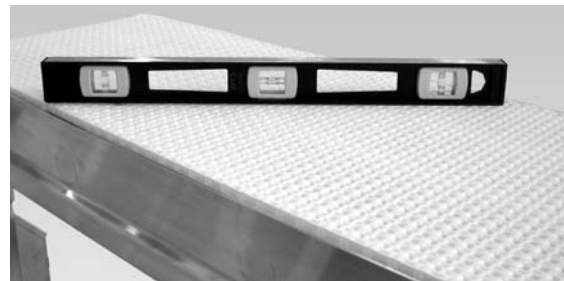


Figure 13

⚠ WARNING

<p>Failure to secure nuts may cause conveyor sections to drop down causing severe injury.</p> <p>TIGHTEN NUTS AFTER ADJUSTMENT.</p>

Preventive Maintenance and Adjustment

7. Tighten the upper nut to secure each foot assembly.



Figure 14

8. Install and tighten cap (if equipped).

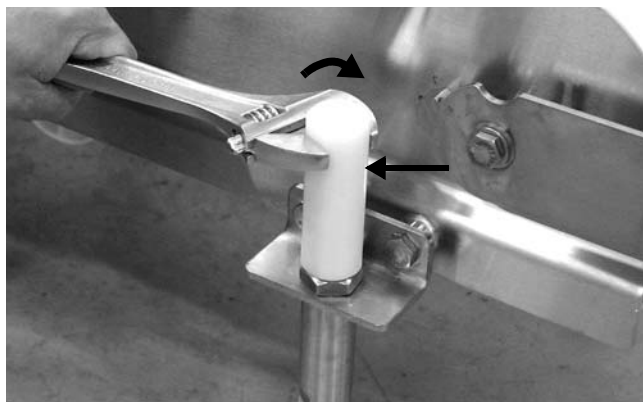


Figure 15

Conveyor Angle Adjustment

⚠ WARNING
<p>Loosening stand height or angle adjustment nuts may cause conveyor sections to drop down, causing severe injury.</p> <p>SUPPORT CONVEYOR SECTIONS PRIOR TO LOOSENING STAND HEIGHT OR ANGLE ADJUSTMENT SCREWS.</p>

1. For slotted brackets, loosen the screws and adjust the bracket to the same angle as the conveyor.

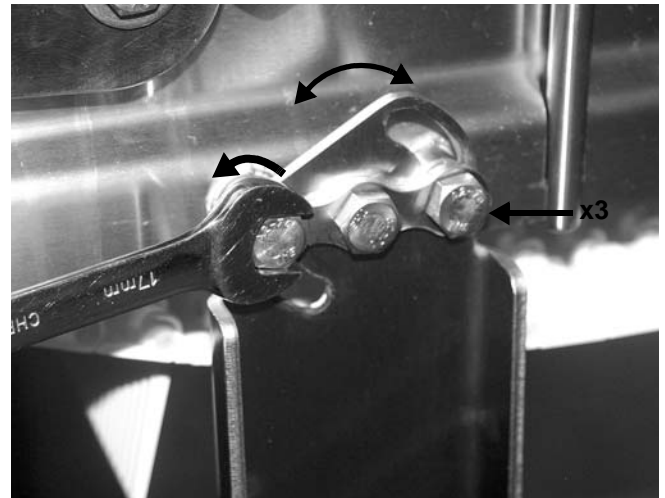


Figure 16

⚠ WARNING
<p>Failure to secure nuts may cause conveyor sections to drop down causing severe injury.</p> <p>TIGHTEN SCREWS AFTER ADJUSTMENT.</p>

2. Tighten the screws.

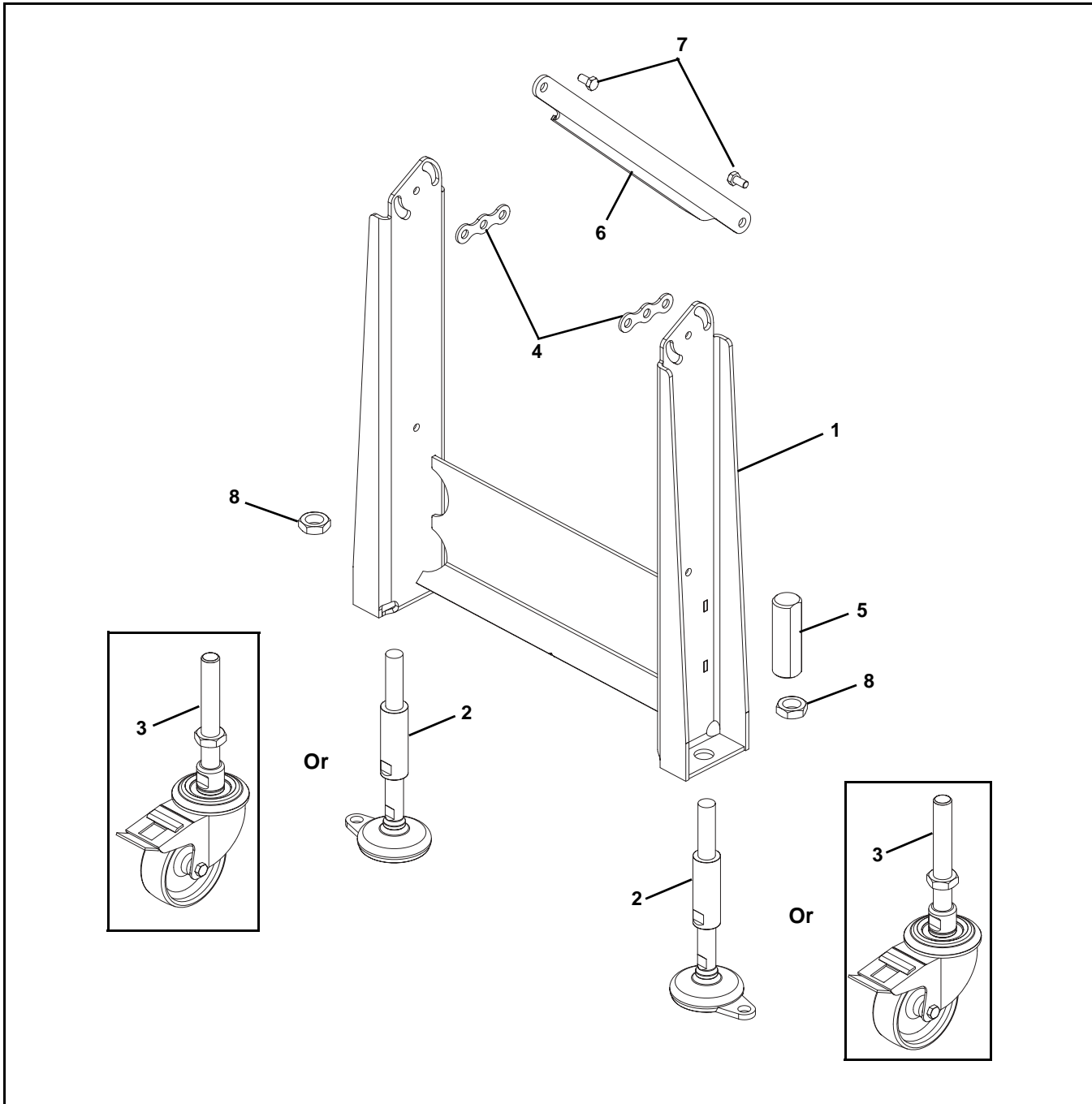


Figure 17

3. Adjust the stand height. Refer to “Stand Height Adjustment” on page 8.

Service Parts

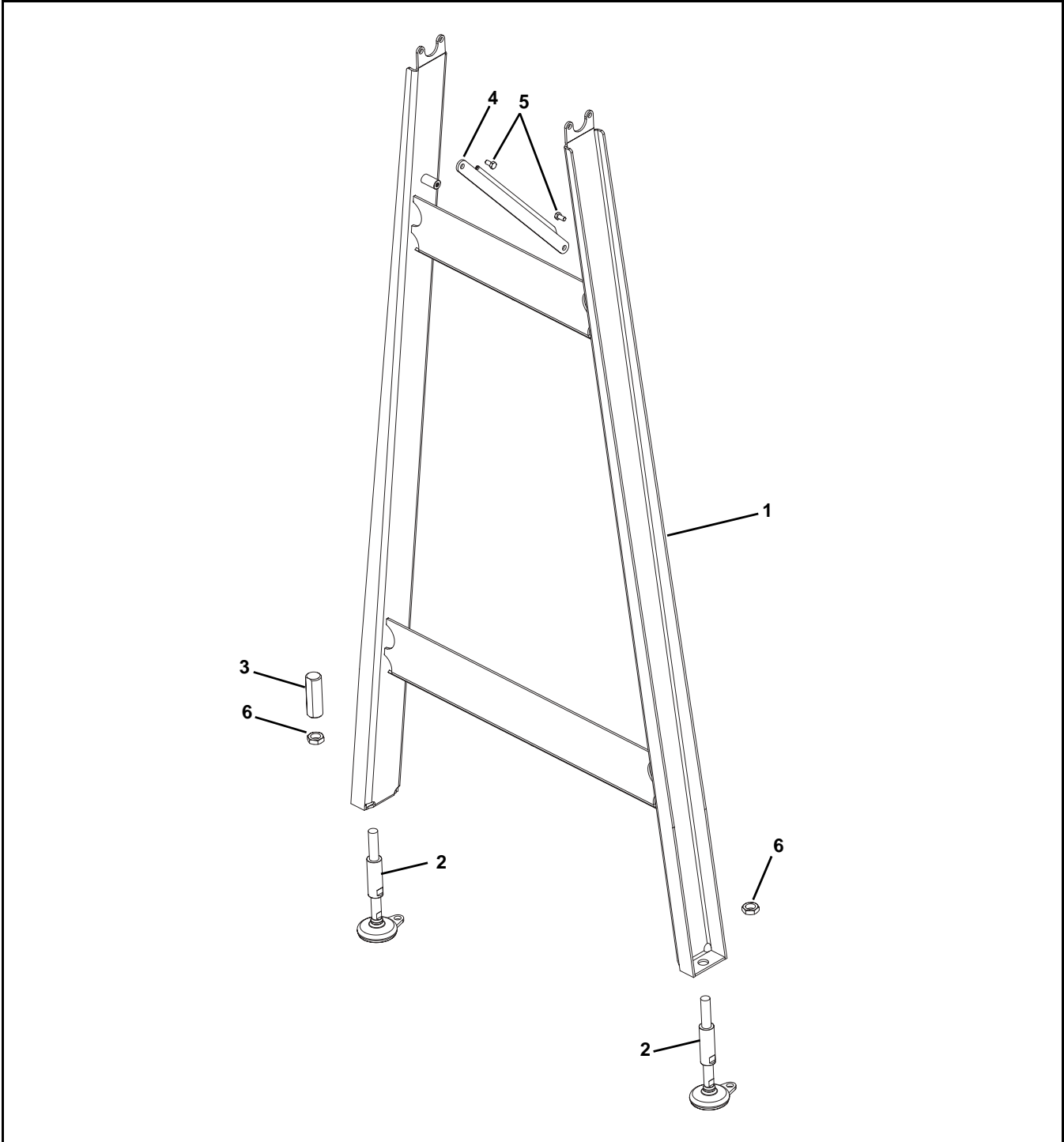
Fixed Height Stands



Item	Part Number	Description
1	-----	Consult Factory for Stand Frame Part Number
2	532036	Standard Feet
	807-1608	Threadless Feet
3	458309	Casters
4	530385	Adjustable Angle Bracket
5	500394	Threadless Cap
6	530290-LLLLL-M	Diagonal Brace
7	960816MSS	Hex Head Cap Screw, M8-1.25 x 16 mm

Item	Part Number	Description
8	992010MSS	Jam Nut
LLLLL = Part length in mm.		
Example: Part length = 1000 mm LLLLL = 01000		
Service parts can be obtained through your distributor or directly from Dorner Mfg. Corp. (800) 397-8664 or customerservice@dorner.com		

Tall Support Stands

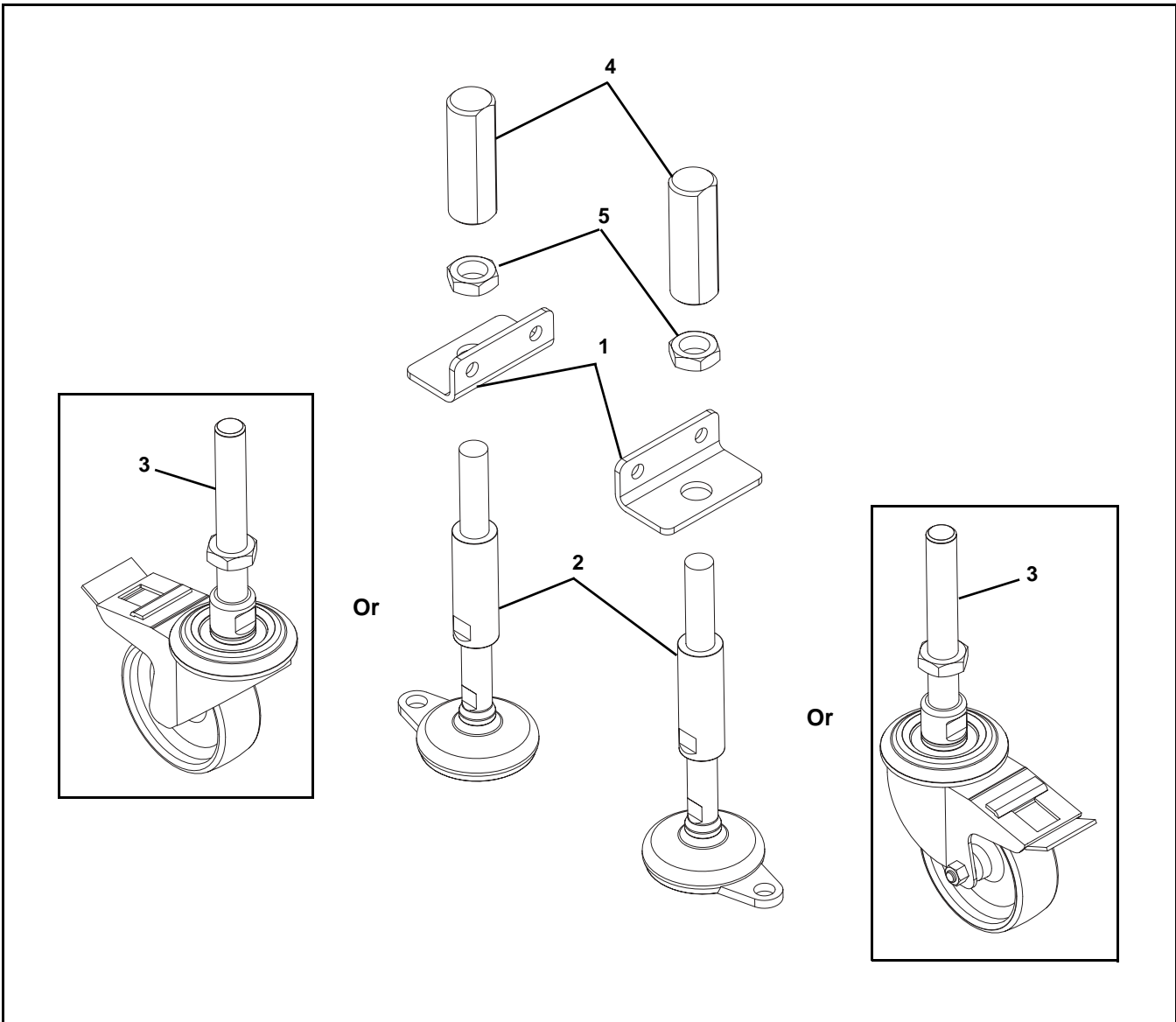


Item	Part Number	Description
1	-----	Consult Factory for Stand Frame Part Number
2	532036	Standard Feet
	807-1608	Threadless Feet
3	500394	Threadless Cap
4	530290-LLLLL-M	Diagonal Brace

Item	Part Number	Description
5	960816MSS	Hex Head Cap Screw, M8-1.25 x 16 mm
6	992010MSS	Jam Nut
LLLLL = Part length in mm.		
Example: Part length = 1000 mm LLLLL = 01000		
Service parts can be obtained through your distributor or directly from Dorner Mfg. Corp. (800) 397-8664 or customerservice@dorner.com		

Service Parts

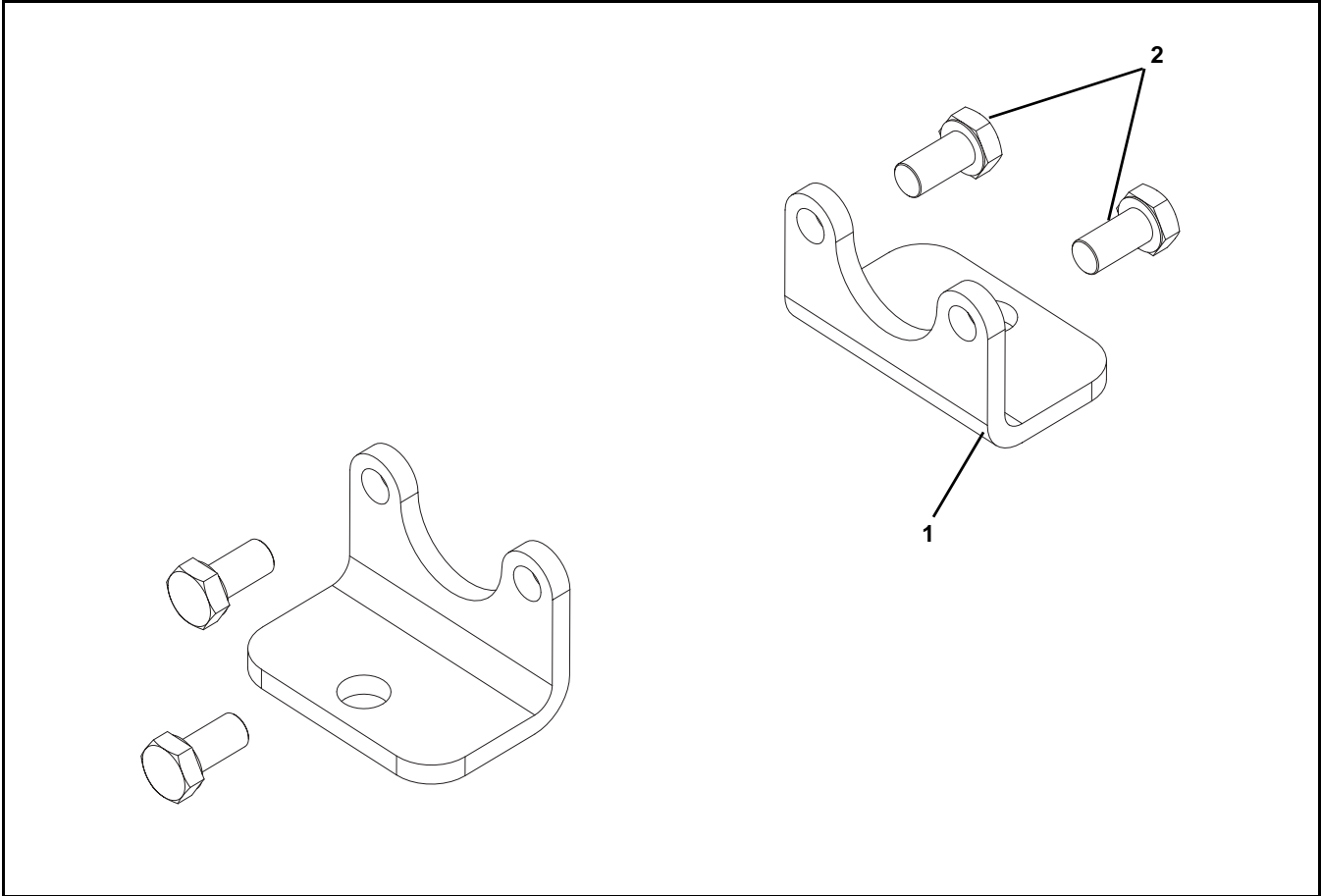
Low Height Stands



Item	Part Number	Description
1	530163	Bracket
2	532036	Standard Feet
	807-1608	Threadless Feet
3	458309	Casters
4	500394	Threadless Cap
5	992010MSS	Jam Nut

Service parts can be obtained through your distributor or directly from Dorner Mfg. Corp. (800) 397-8664 or customerservice@dorner.com

Horizontal Ceiling Supports

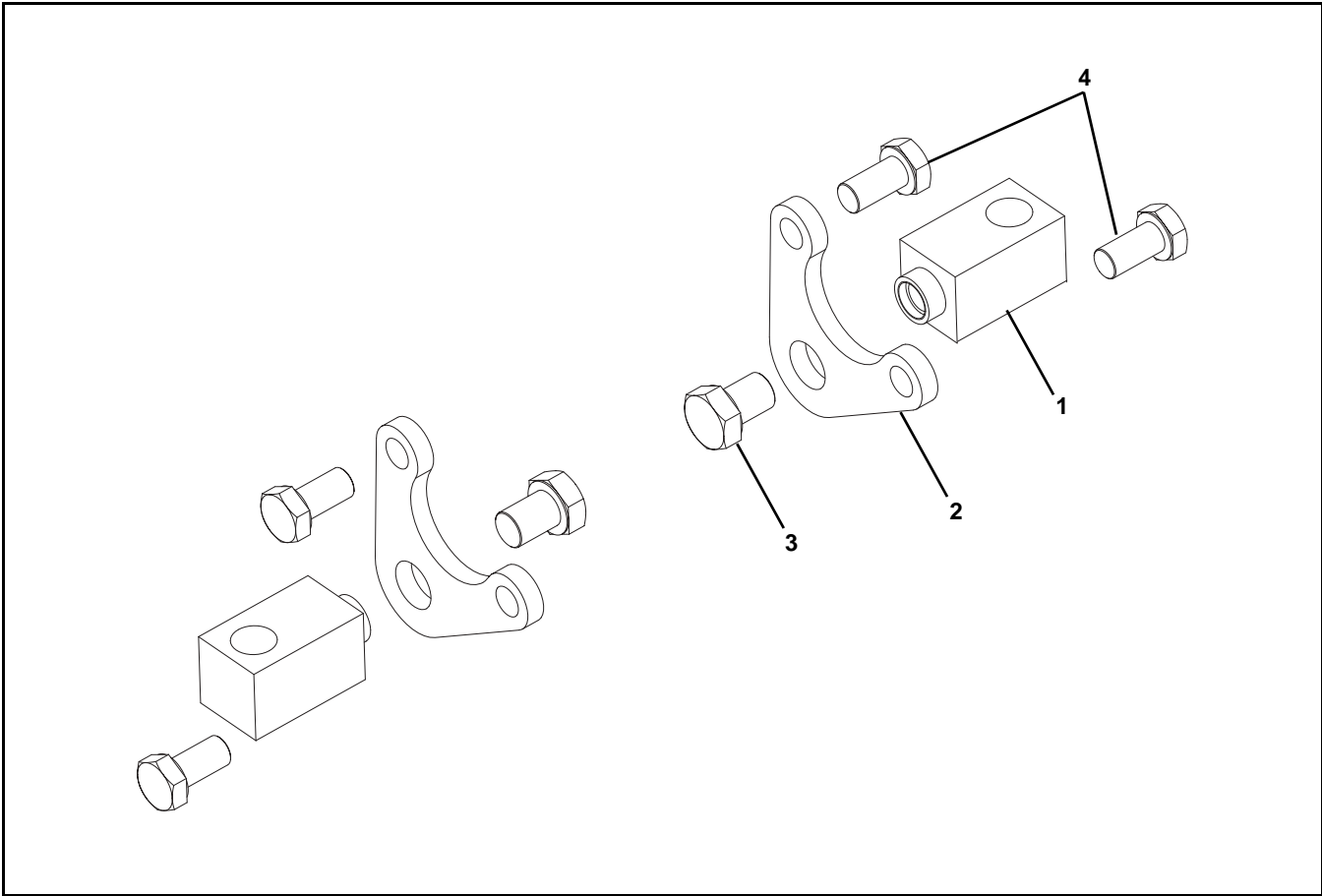


Item	Part Number	Description
1	532328	Horizontal Bracket
2	961020MSS	Hex Head Cap Screw, M10-1.50 x 20 mm

Service parts can be obtained through your distributor or directly from Dorner Mfg. Corp. (800) 397-8664 or customerservice@dorner.com

Service Parts

Adjustable Angle Ceiling Supports



Item	Part Number	Description
1	532324	Ceiling Block
2	532326	Mount Plate
3	961020MSS	Hex Head Cap Screw, M10-1.50 x 20 mm
4	961220MSS	Hex Head Cap Screw, M12-1.75 x 20 mm

Service parts can be obtained through your distributor or directly from Dorner Mfg. Corp. (800) 397-8664 or customerservice@dorner.com

Return Policy

Returns must have prior written factory authorization or they will not be accepted. Items that are returned to Dorner without authorization will not be credited nor returned to the original sender. When calling for authorization, please have the following information ready for the Dorner factory representative or your local distributor:

1. Name and address of customer.
2. Dorner part number(s) of item(s) being returned.
3. Reason for return.
4. Customer's original order number used when ordering the item(s).
5. Dorner or distributor invoice number. Include part serial number if available.

A representative will discuss action to be taken on the returned items and provide a Returned Materials Authorization (RMA) number for reference. RMA will automatically close 30 days after being issued. To get credit, items must be new and undamaged. There will be a return charge on all items returned for credit, where Dorner was not at fault. It is the customer's responsibility to prevent damage during return shipping. Damaged or modified items will not be accepted. The customer is responsible for return freight.

Product Line	Product Type								Engineered to order parts
	Standard Products								
	Conveyors	Gearmotors & Mounting Packages	Support Stands	Accessories	Spare Parts (non-belt)	Spare Belts - Standard Flat Fabric	Spare Belts - Cleated & Spec. Fabric	Spare Belts - Plastic Chain	All equipment and parts
1100 Series	30% return fee for all products except: 50% return fee for conveyors with modular belt, cleated belt or speciality belts All Electrical items are assigned original manufacturers return policy.						non-returnable		case-by-case
2200 Series									
3200 Series									
Pallet Systems									
FlexMove/SmartFlex									
GAL Series									
All Electrical									
7100 Series	50% return fee for all products						non-returnable		case-by-case
7200/7300 Series									
AquaGard 7350 Series Version 2									
GES Series									
AquaGard 7350/7360 Series	non-returnable								
AquaPruf Series	non-returnable								

Returns will not be accepted after 60 days from original invoice date. The return charge covers inspection, cleaning, disassembly, disposal and reissuing of components to inventory. If a replacement is needed prior to evaluation of returned item, a purchase order must be issued. Credit (if any) is issued only after return and evaluation is complete.

Dorner has representatives throughout the world. Contact Dorner for the name of your local representative. Our Customer Service Team will gladly help with your questions on Dorner products.

For a copy of Dorner's Warranty, contact Dorner, an authorized sales channel or visit our website: www.dorner.com.

For replacement parts, contact an authorized Dorner Service Center or the factory.

www.dorner.com



Dorner – North & South America

Dorner – U.S.A. Headquarters

975 Cottonwood Ave
Hartland, WI 53029, USA
(800) 397-8664
(262) 367-7600
info@dorner.com

Dorner – Canada

100-5515 North Service Road
Burlington, Ontario L7L 6G6
Canada
(289) 208-7306
info@dorner.com

Dorner – Latin America

Carretera a Nogales #5297, Nave 11.
Parque Industrial Nogales
Zapopan, Jalisco C.P. 45222 México
+52.33.30037400 | info.latinamerica@dorner.com

Dorner – Europe

Dorner – Germany

Karl-Heinz-Beckurts-Straße 7
52428 Jülich,
Germany
+49 (0) 2461/93767-0
info.europe@dorner.com

Dorner – France

8 rue des Frères Caudron
78140 Velizy-Villacoublay
France
+33 (0)1 84 73 24 27
info.france@dorner.com

Dorner – Asia

128 Jalan Permatang Damar Laut, Bayan Lepas 11960
Penang, Malaysia
+604-626-2948 | info.asia@dorner.com



© Dorner Mfg. Corp. 2021. All Rights Reserved.