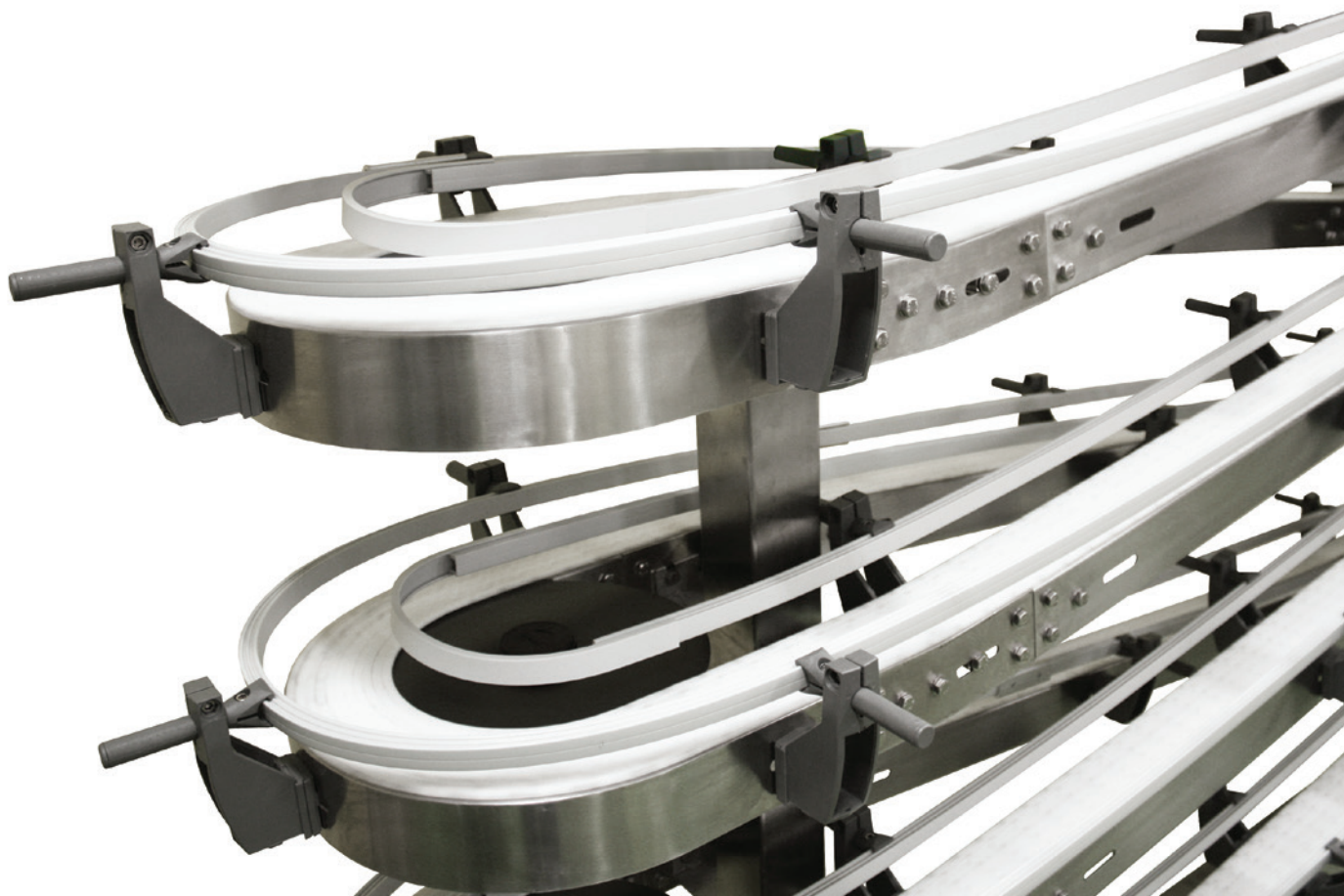


Complex Configurations  
& Tight Spaces

Ideal for Corrosion  
Resistant Applications

Reduces  
Conveyor Footprint

Capable of Curves,  
Inclines & Declines



# **FlexMove** <sup>®</sup> **STAINLESS SERIES**

High Performance, Stainless Steel,  
Flexible Chain Conveyors

**DORNER** <sup>®</sup>  
By Columbus McKinnon

## FlexMove® Stainless Steel Conveyors are best for:

- Part Handling
- Tight Spaces
- Buffering
- Elevation Changes
- Accumulation
- Long Lengths
- Complex Configurations
- Caustic & Corrosive Environments
- Curves, Jogs, Inclines, Declines

## Sizes & Measurements

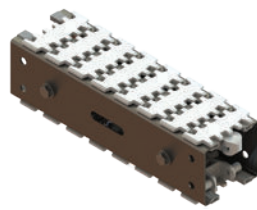
- Widths: 65 mm, 85 mm, 105 mm, 180 mm and 260 mm
- Lengths: up to 30 m (98 ft)

## Loads & Speeds

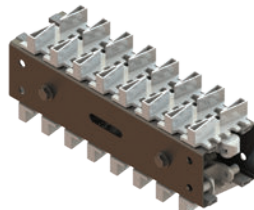
- Loads up to 65 kg/m (44 lbs/ft)
- Speeds: up to 58 mpm (190 fpm)

## Plastic Chain Types

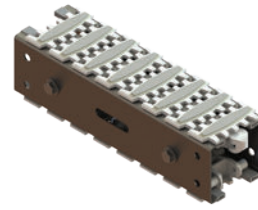
- Standard: Low Friction & Friction Top Inserts
- Specialty
  - Conductive
  - Cleated
  - Hardened Steel Top
  - Roller Top
  - Magnet Top
  - And Many More



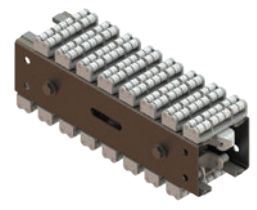
Flat



Cleated



Friction Top

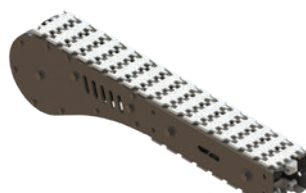


Roller Top

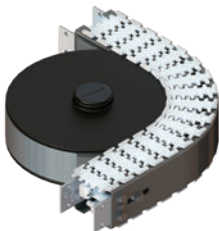
## Modules



Drive Tail



Idler Tail



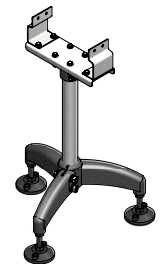
Curves from 15° to 180°



Inclines/Declines from 5° to 90°

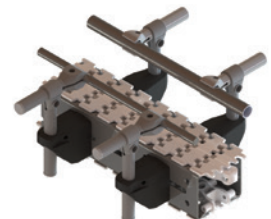
## Support Stands

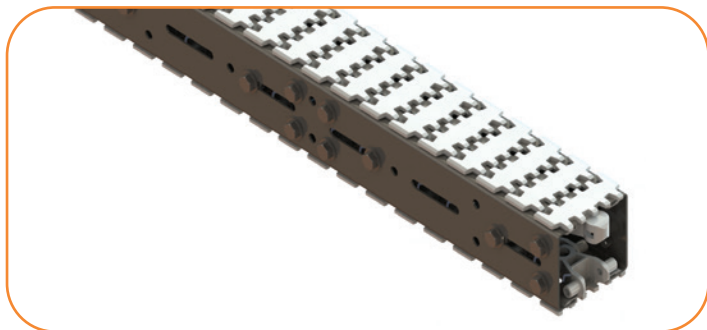
- Tripod Supports
- Horizontal & Adjustable Angle Supports also available



## Guiding

- Fully Adjustable
- Adjustable Width/Height
- Twin Rail
- Overhead Guide





## Complete Stainless Steel Construction

- Stainless Steel Construction is ideal for corrosion resistant applications or packaging lines



## Wheel Corners

- Standard wheel corners eliminate friction allowing for complicated multi-curved configurations



## Wedge Elevator

- Wedge Elevators save footprint space by vertically lifting or lowering a product using a specialty gripper chain



## Alpines

- Alpine configurations available for product buffering, elevation changes or coding/curing applications

## The Benefits of a Dorner FlexMove Stainless Steel Series Conveyor

### Reduces Costs

- Available pre-assembled to your exact specifications; saving labor costs
- FlexMove Solutions eliminates unnecessary cutting, inventory and waste

### Delivers Fast

- Dorner sets the industry standard for delivery
- FlexMove is shattering the norm with conveyors available to ship in as little as 15 working days

### Flexible

- Provides capability for vertical incline with minimal floor space
- Features modular framing for future add-on capability and production line changes





**Industrial**



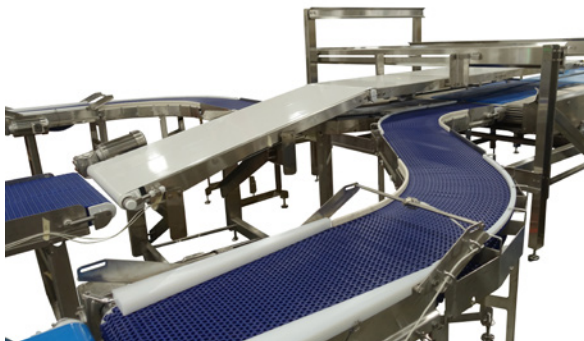
**Flexible Chain**



**Pallet Systems**



**Sanitary Stainless Steel**



**Engineered Solutions Group**

Custom engineered solutions for almost any application.



**CAD Configurator Tool**

Industry leading tool! Configure your own custom conveyor in minutes.

## TRANSFORMING CONVEYOR AUTOMATION

### Contact Dorner

**United States**  
+1-262-367-7600

**Canada**  
+1-289-208-7306

**Mexico**  
+52.33.30037400

**Germany**  
+49 (0) 2461/93767-0

**France**  
+33 (0)1 84 73 24 27

**Malaysia**  
+604-626-2948

# DORNER®

By Columbus McKinnon

**DORNERCONVEYORS.COM**

**CMP**  
INTELLIGENT MOTION

**DORNER**

**GARVEY**



**MAGNETEK**

**montratec**

CONVEYANCE SOLUTIONS

© Dorner Mfg. Corp. 2024. All Rights Reserved.

851-916 0724